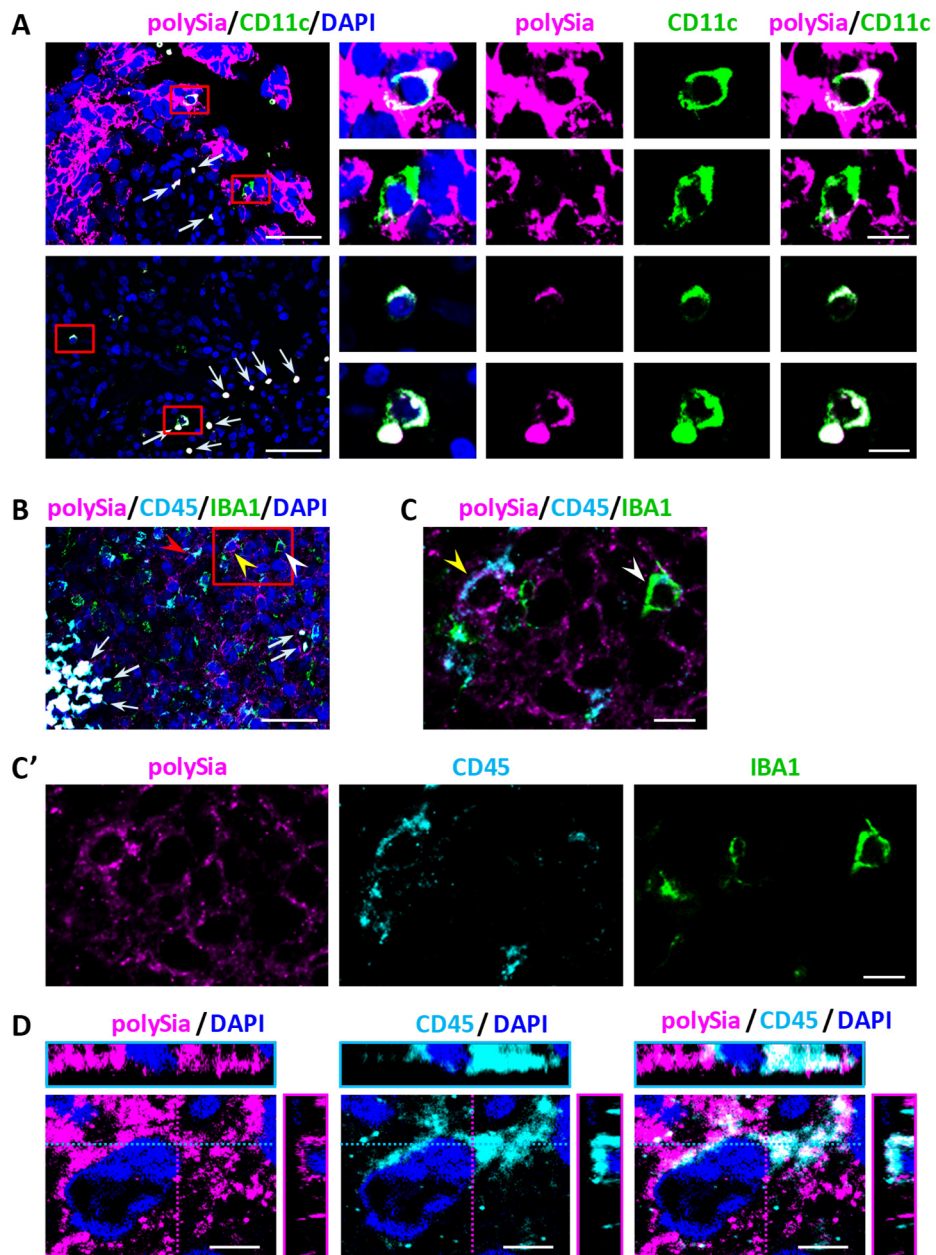


Thiesler et al. Supplementary Figure S2



Supplementary Figure S2. PolySia on CD11c-positive and on CD45-positive, IBA1-negative cells. Immunofluorescence staining of polySia (magenta), CD11c in **A** or IBA1 in **B** and **C** (green), and CD45 in **B-D** (cyan), as indicated. Nuclei were counterstained with DAPI (blue). White arrows indicate autofluorescent erythrocytes. **A**, Overviews and higher magnification views (corresponding to boxed areas in the overviews) of CD11c-positive cells with or without cell surface polySia in a GB specimen with (upper panels) or without strong polySia-signals on other cells (lower panels), respectively. **B**, Overview with two polySia- and CD45-positive, IBA1-negative cells (red and yellow arrowheads) in the vicinity of an intratumoral hemorrhage with compromised endothelial integrity. White arrowhead indicates an IBA1-positive cell with weak CD45 immune reactivity. **C**, **C'**, Higher magnification views of the boxed area in **B**. **D**, 3D reconstruction of polySia and CD45 staining of the cell marked with the red arrowhead in **B**. Scale bars, 50 μm (overviews in **A**, **B**), 10 μm (higher magnification views in **A**, **C**, **C'**), and 5 μm (**D**).