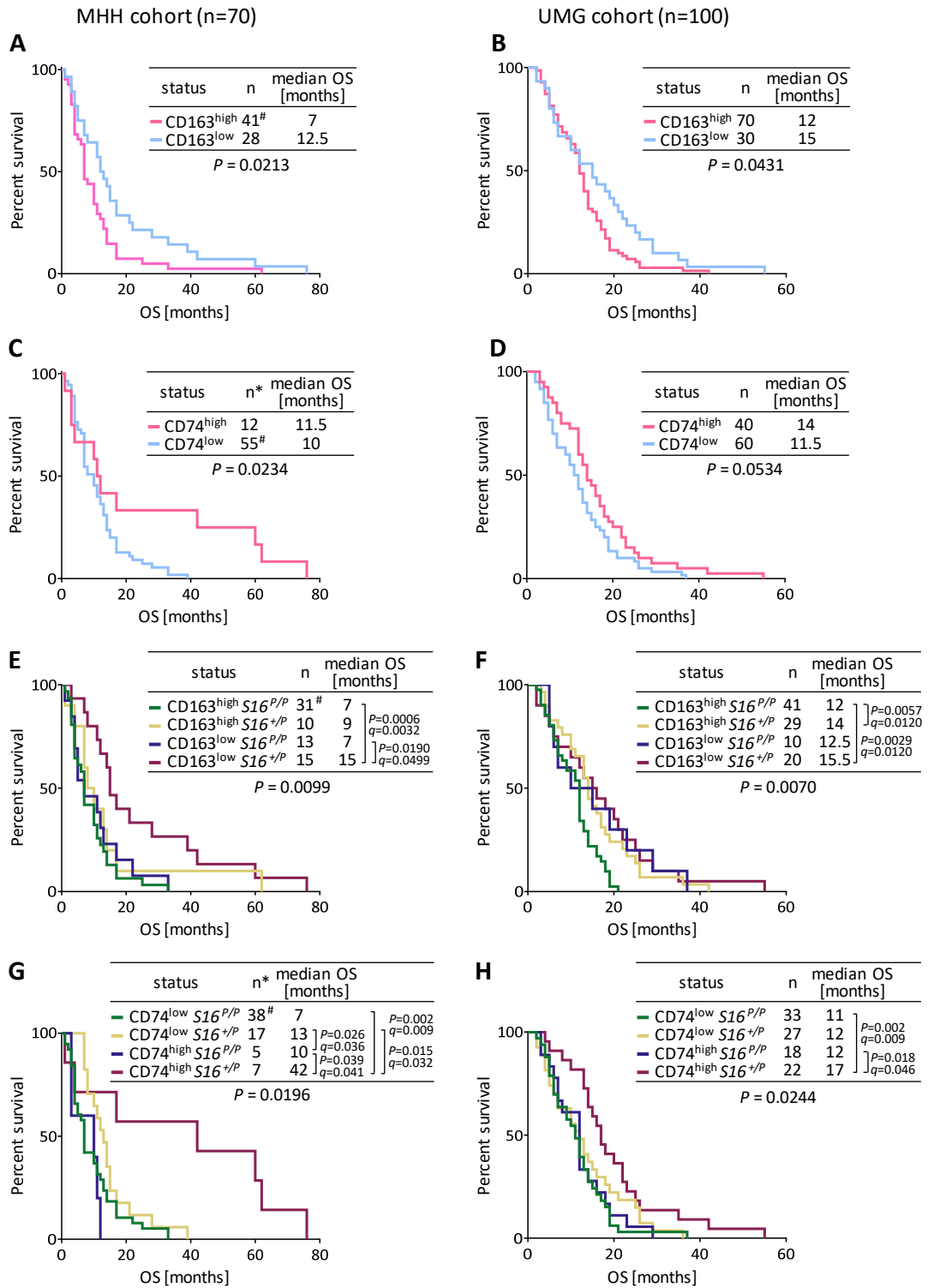
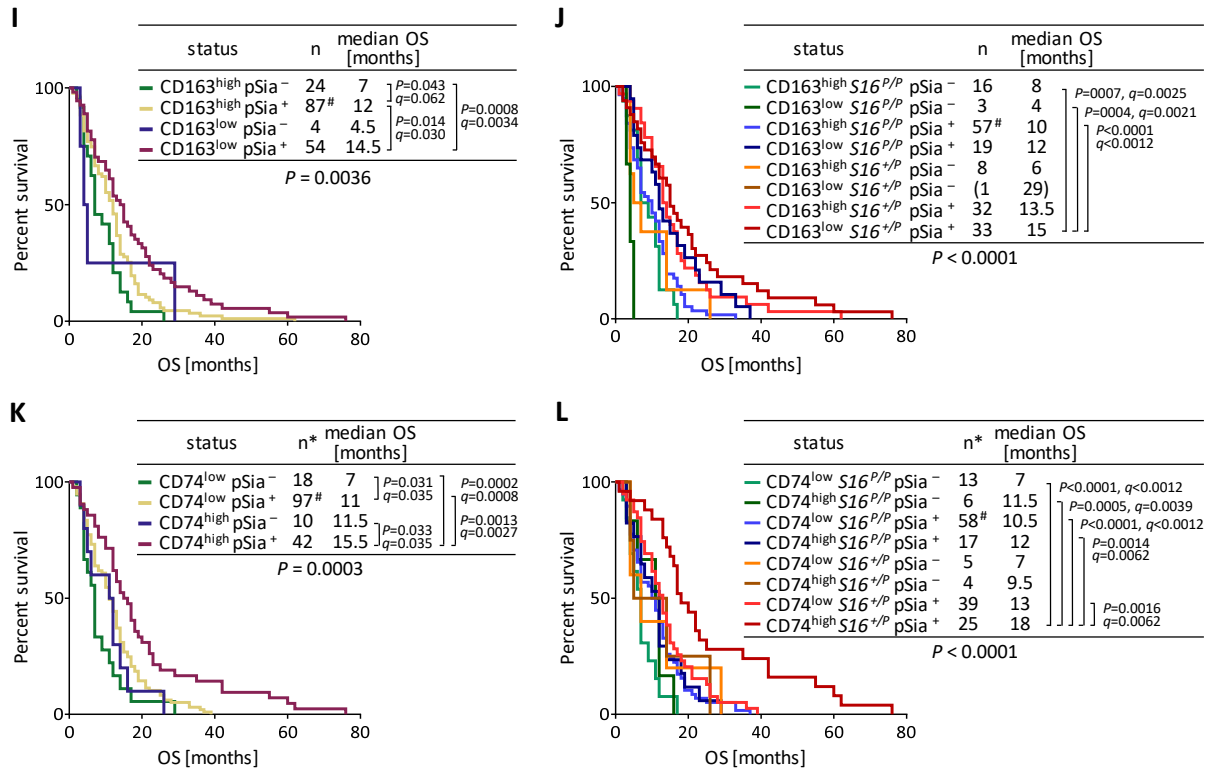


# Thiesler et al. Supplementary Figure S5



MHH+UMG cohort (n=170)



**Supplementary Figure S5.** OS analysis of GB cases stratified for CD163 to CD68 or CD74 to IBA1 ratios alone or in combination with the *SIGLEC16* genotype and polySia status. **A-H**, Kaplan-Meier survival plots with log-rank test results and median OS of the two GB cohorts individually, stratified for CD163<sup>high</sup> and CD163<sup>low</sup> (**A, B**), for CD74<sup>low</sup> and CD74<sup>high</sup> (**C, D**), or for different combinations of *SIGLEC16* status and CD163 (**E, F**), or CD74 (**G, H**), as indicated. Two of the three cases with identified IDH1/2 mutations in the UMG cohort were CD163<sup>high</sup>/CD74<sup>low</sup>/*SIGLEC16*<sup>P/P</sup> (OS = 3 and 5 months), one case was CD163<sup>high</sup>/CD74<sup>low</sup>/*SIGLEC16*<sup>+P</sup> (OS = 7 months). **I-L**, Kaplan-Meier survival plots with log-rank test results and median OS of the two GB cohorts combined, stratified for CD163<sup>high</sup> and CD163<sup>low</sup> (**I, J**), or CD74<sup>low</sup> and CD74<sup>high</sup> (**K, L**) in combination with polySia (**I, K**) or with polySia and *SIGLEC16* status (**J, L**), as indicated.  $P$  values  $< 0.05$  and respective FDR adjusted  $q$  values are reported for all group comparisons in **A-H, I** and **C**, and for comparisons with the *SIGLEC16*/polySia double-positive, CD163<sup>low</sup> or CD74<sup>high</sup> groups in **J** and **L**. \* denotes that two specimen of the MHH cohort were excluded, because the available FFPE tissue did not suffice for CD74/IBA1 immunostaining. # denotes that one case in the MHH cohort was censored because OS was zero.