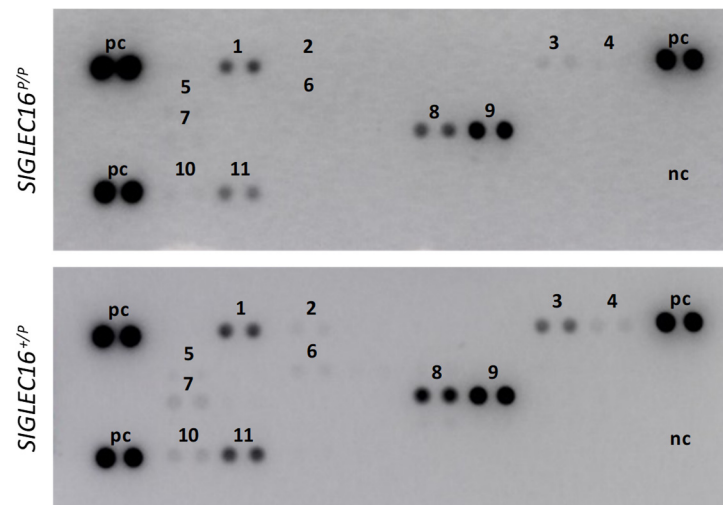


## Thiesler et al. Supplementary Figure S6



**Supplementary Figure S6.** Antibody array detection of cytokines and chemokines released by *SIGLEC16*-negative (*SIGLEC16<sup>P/P</sup>*) and *SIGLEC16*-positive (*SIGLEC16<sup>+/P</sup>*) PMd-macrophages exposed to GB cell-derived membrane fractions. Representative examples of one array per genotype. Per array, each of the following cytokines/chemokines were detected in duplicate: CCL2 (1), CCL3/4 (2), CXCL1 (3), CXCL10 (4), CCL1 (5), G-CSF (6), IL1-ra (7), IL-6 (8), IL-8 (9), MIF (10), PAI-1 (11). pc, positive controls, nc, negative controls.

Antibodies of the following cytokines, chemokines, and other factors were included in the array, but below detection level: CCL5, CD40 Ligand, Complement Component C5/C5a, CXCL11, CXCL12, GM-CSF, ICAM-1, IFN- $\gamma$ , IL-1 $\alpha$ , IL-1 $\beta$ , IL-2, IL-4, IL-5, IL-10, IL-12 p70, IL-13, IL-16, IL-17A, IL-17E, IL-18, IL-21, IL-27, IL-32 $\alpha$ , TNF- $\alpha$ , TREM-1.