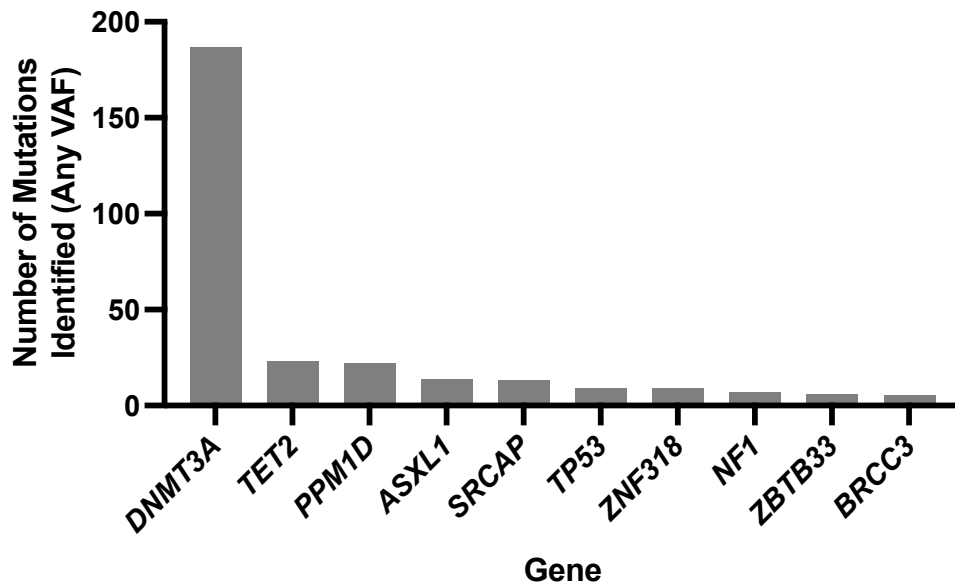
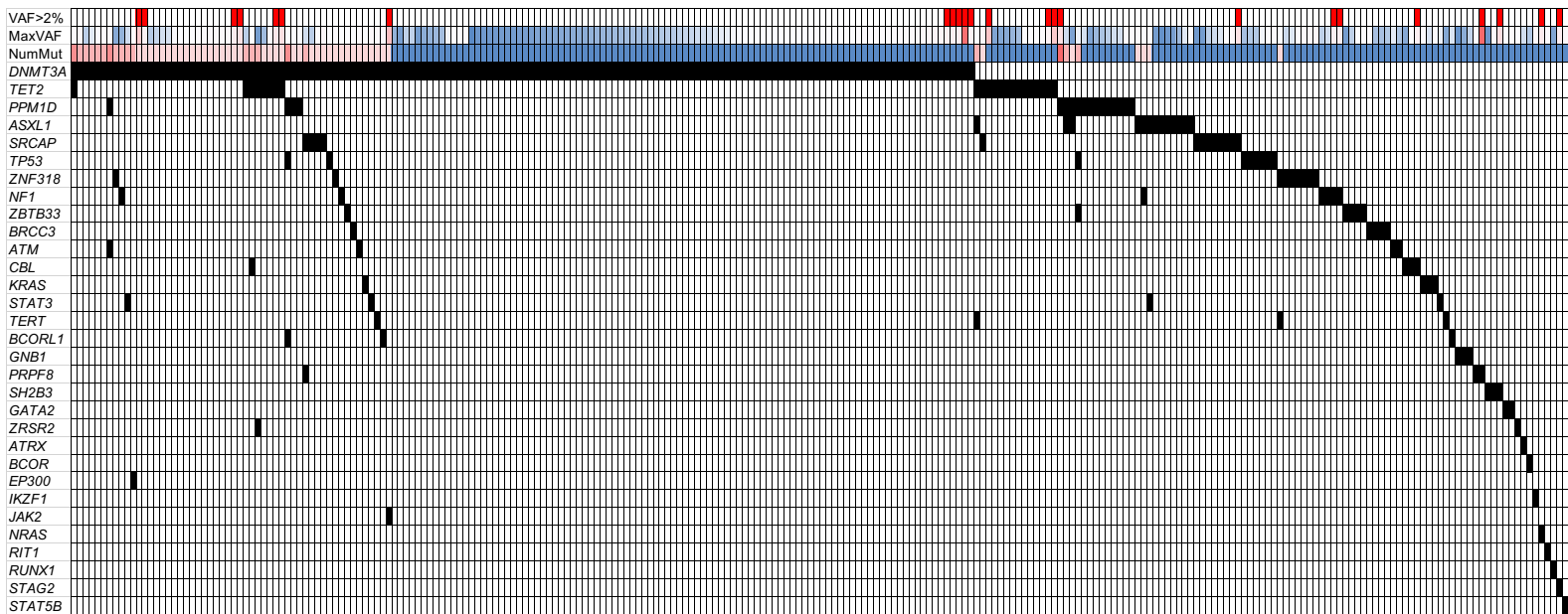


**A****B**

### Supplemental Figure S1: All Clonal Hematopoiesis in the YWS.

(A) Frequency of mutations in each gene identified in the cohort with a minimum variant allele fraction (VAF) of 0.2%. Note that the number of patients with these mutations total 252 (28.7%).

(B) Co-mutation plot of all mutations identified (minimum VAF 0.2%). Each column represents a different patient carrying a mutation. A black bar reflects the presence of a mutation. In rows 2 and 3 (maximum VAF [maxVAF] and number of mutations present [NumMut]) the color bar goes from blue (less) to red (more).