

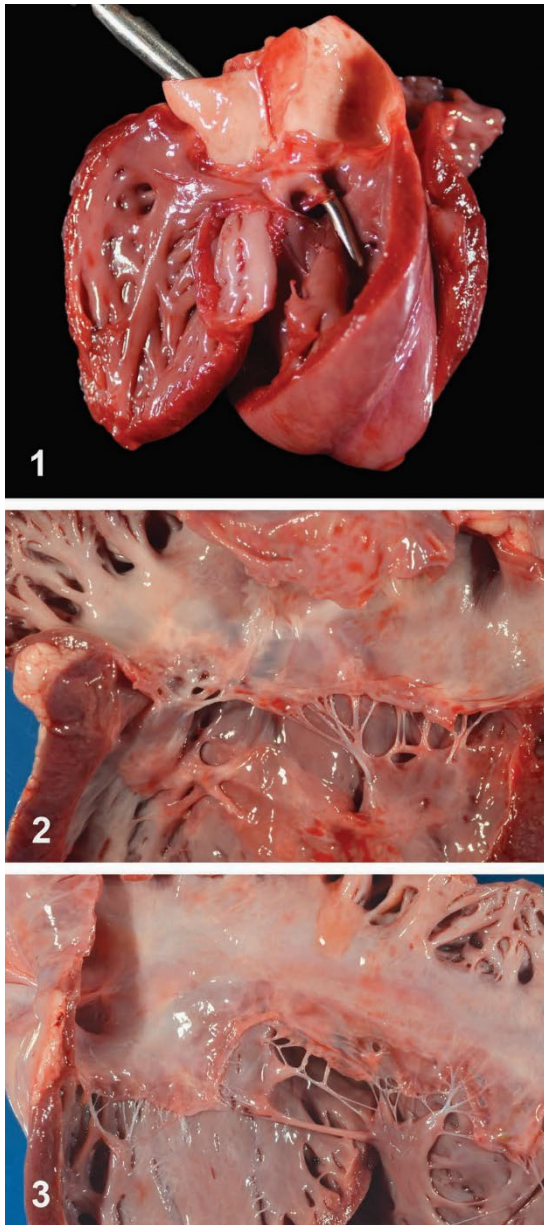
**Supplemental Table 1.** Details of cases presented to the University of California–Davis, Veterinary Medical Teaching Hospital.

Case	Diagnoses (size of defect, as reported)	Type of defect	Age, d	Sex	Breed	Cardiogenic lesions	Noncardiogenic processes	Cause of death
1	VSD (3 mm)	Data not available	4	M	Mix (Boer × Nubian)	None	Atresia ani	GI obstruction
2	VSD (5 mm)	Perimembranous	14	M	Toggenburg	Pulmonary congestion	None	Cardiac
3	VSD (5 mm)	Perimembranous	120	F	Boer	Pulmonary congestion	Vertebral malformation	Multiple malformations
4	VSD (6 mm)	Perimembranous	1	F	Boer	None	Right ectopic ureter	Cardiac
5	VSD (8 × 6 mm)	Perimembranous	90	F	Nigerian dwarf	Pulmonary edema	Bacterial bronchopneumonia	Cardiorespiratory, infectious
6	VSD (8 mm)	Perimembranous	Adult	F	Mix (unknown)	Ascites, hepatic acute passive congestion	Dystocia	Cardiac, dystocia
7	VSD (14 × 6 mm)	Perimembranous	35	M	Boer	None	Radiocarpal septic osteoarthritis	Cardiac
8	VSD (12 mm)	Perimembranous	1,460	F	Nubian	Tricavitary effusion, hepatic acute passive congestion, Anasarca	3 mo pregnant	Cardiac
9	VSD (12.5 mm)	Perimembranous	3,285	CM	Nubian	Cervical edema	Forestomach impaction	GI obstruction
10	VSD (20 mm)	Perimembranous	2,190	F	Nubian	Pulmonary edema, tricavitary effusion, hepatic chronic passive congestion, cervical edema	Traumatic wounds from dog bites	Trauma
11	VSD (13 × 10 mm)	Muscular or inlet	1,095	F	Nubian	Pulmonary edema, thoracic/abdominal effusion, hepatic chronic passive congestion	None	Cardiac
12	VSD (5 mm), PFO (5 mm)	Perimembranous	28	M	Nigerian dwarf	Tricavitary effusion, pulmonary edema, cyanosis	None	Cardiac
13	VSD (9 mm), PFO (7 mm)	Perimembranous	14	M	Toggenburg	None	None	Cardiac
14	VSD (4 mm), PDA, PFO	Perimembranous	2	F	Toggenburg	Pulmonary edema	Pulmonary edema	Cardiac

Congenital heart defects in goats

15	VSD (size not available), PDA (size not available)	Perimembranous	10	F	Saanen	Pleura/pericardial effusion, pulmonary edema	None	Cardiac
16	VSD (20 mm), pulmonary stenosis	Data not available	730	F	Nubian	Pulmonary edema	Post-kidding	Cardiac
17	DORV with VSD, PFO/ASD	Subaortic or noncommitted	7	F	Nubian	Pulmonary edema	None	Cardiac
18	DORV with VSD (10 mm), PFO (10 mm)	Subpulmonary	14	F	Alpine	Pulmonary edema	None	Cardiac
19	DORV with VSD (8 × 5 mm)	Data not available	30	F	Sonnet	Pulmonary edema	Right renal aplasia, right aural dysplasia and hypoplasia	Cardiac
20	ASD (4 mm)	Ostium secundum	90	CM	Boer	Ventral edema	Urolithiasis	Urolithiasis
21	ASD/PFO (10 mm)	NA	1	M	Boer	None	None	Cardiac
22	Tricuspid atresia with VSD (5 mm), PFO/ASD (15 mm), PS, and PDA (1 mm)	NA	4	M	Toggenburg	None	None	Cardiac
23	Tricuspid atresia without VSD, PFO/ASD (15 mm)	NA	Neonatal	F	Boer	Cyanotic, Atelectasis, bronchial artery hypertrophy	None	Cardiac
24	Tricuspid valve dysplasia, VSD (10 × 12 mm), PDA (2 mm), PFO (10 mm)	Infundibular	4	F	Toggenburg	Pulmonary edema	Bacterial ruminitis	Cardiac, infectious
25	Mitral valve dysplasia/tricuspid valve dysplasia	NA	300	M	Nubian	Pulmonary edema and hemorrhage, tricavitary effusion, hepatic chronic passive congestion	Diarrhea	Cardiac
26	Tetralogy of Fallot	NA	180	F	Toggenburg	Pulmonary edema, tricavitary effusion, hepatic acute passive congestion	None	Cardiac
27	Cor triatriatum sinister	NA	730	M	Boer	Pulmonary edema	Urolithiasis, uroperitoneum	Urolithiasis
28	Complete atrioventricular canal, common arterial trunk	NA	2	F	Toggenburg	None	Palatoschisis, sternal agenesis	Multiple malformations
29	Ventricular dilation (cause unknown)	NA	14	M	Angora	Pulmonary edema	None	Cardiac

ASD = atrial septal defect; CM = castrated male; DORV = double-outlet right ventricle; F = female; M = male; NA = not applicable; PDA = patent ductus arteriosus; PFO = persistent foramen ovale; PS = pulmonic stenosis; VSD = ventricular septal defect.



**Supplemental Figure 1.** Double-outlet right ventricle with subpulmonary ventricular septal defect (VSD) from case 18, a 14-d-old Alpine kid. The probe is passing through the VSD. **Supplemental Figures 2, 3.** Atrioventricular valvular dysplasia in case 25, a 10-mo-old Nubian goat. **Supplemental Figure 2.** Severe mitral valve dysplasia characterized by significant shortening and thickening of the chordae tendineae of the posterior papillary muscle (left) causing small and tethered leaflets. The false chorda tendinea that generally forms a thin cord between the papillary muscle and endocardium is also dysplastic, forming a thick fibrous plaque on the endocardium. The anterior papillary muscle has abnormally bridging chordae and thin, tethered leaflets. **Supplemental Figure 3.** Mild tricuspid valve dysplasia forming a thin fibrous fold at the margin between the septal and anterior leaflets.