

Supporting Information for

Echoes of ancient introgression punctuate stable genomic lineages in the evolution of figs

Elliot M. Gardner, Sam Bruun-Lund, Matti Niissalo, Bhanumas Chantarasuwan, Wendy L. Clement, Connie Geri, Rhett D. Harrison, Andrew L. Hipp, Maxime Holvoet, Gillian Khew, Finn Kjellberg, Shuai Liao, Leandro Cardoso Pederneiras, Yan-Qiong Peng, Joan T. Pereira, Quentin Phillipps, Aida Shafreena Ahmad Puad, Jean-Yves Rasplus, Julia Sang, Sverre Juul Schou, Elango Velautham, George D. Weiblen, Nyree J.C. Zerega, Qian Zhang, Zhen Zhang, Christopher Baraloto and Nina Rønsted

Corresponding author: Elliot Gardner

Email: egardner@fiu.edu

This PDF file includes:

Figures S1 to S7

Tables S1 to S3

References

Other supporting materials for this manuscript include the following:

Dataset S1

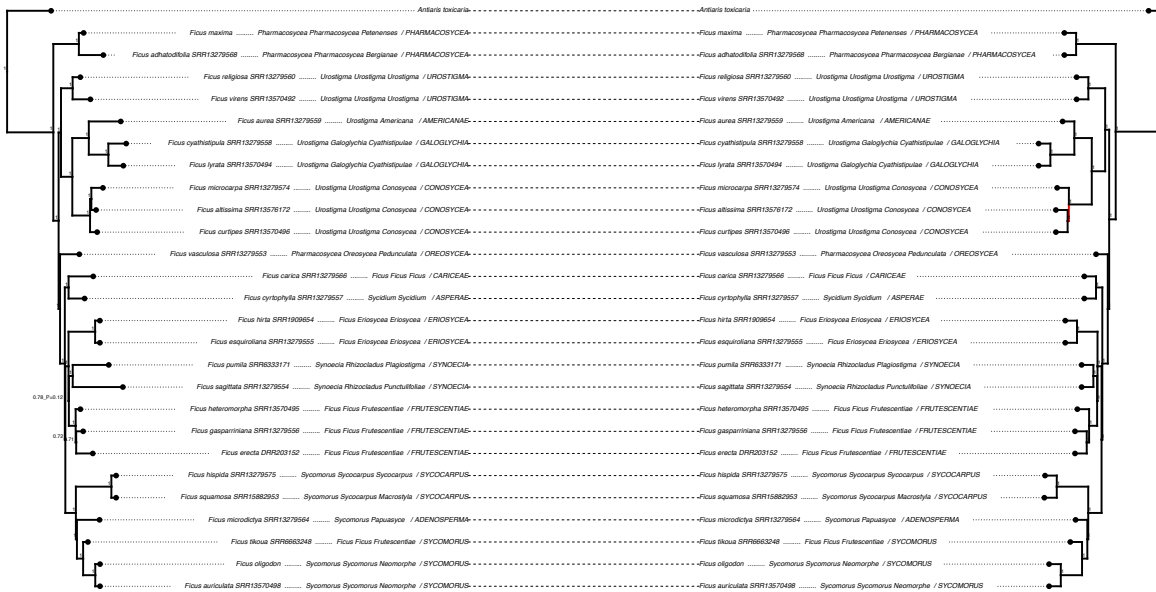


Figure S1. Targeted loci versus whole-genome trees. Left: pruned nuclear species tree based on 1,858 nuclear genes. Right: nuclear species tree based on 16,449 genes. Node support denotes Local Posterior Probability (LPP). Unlabeled nodes have LPP=1.0.

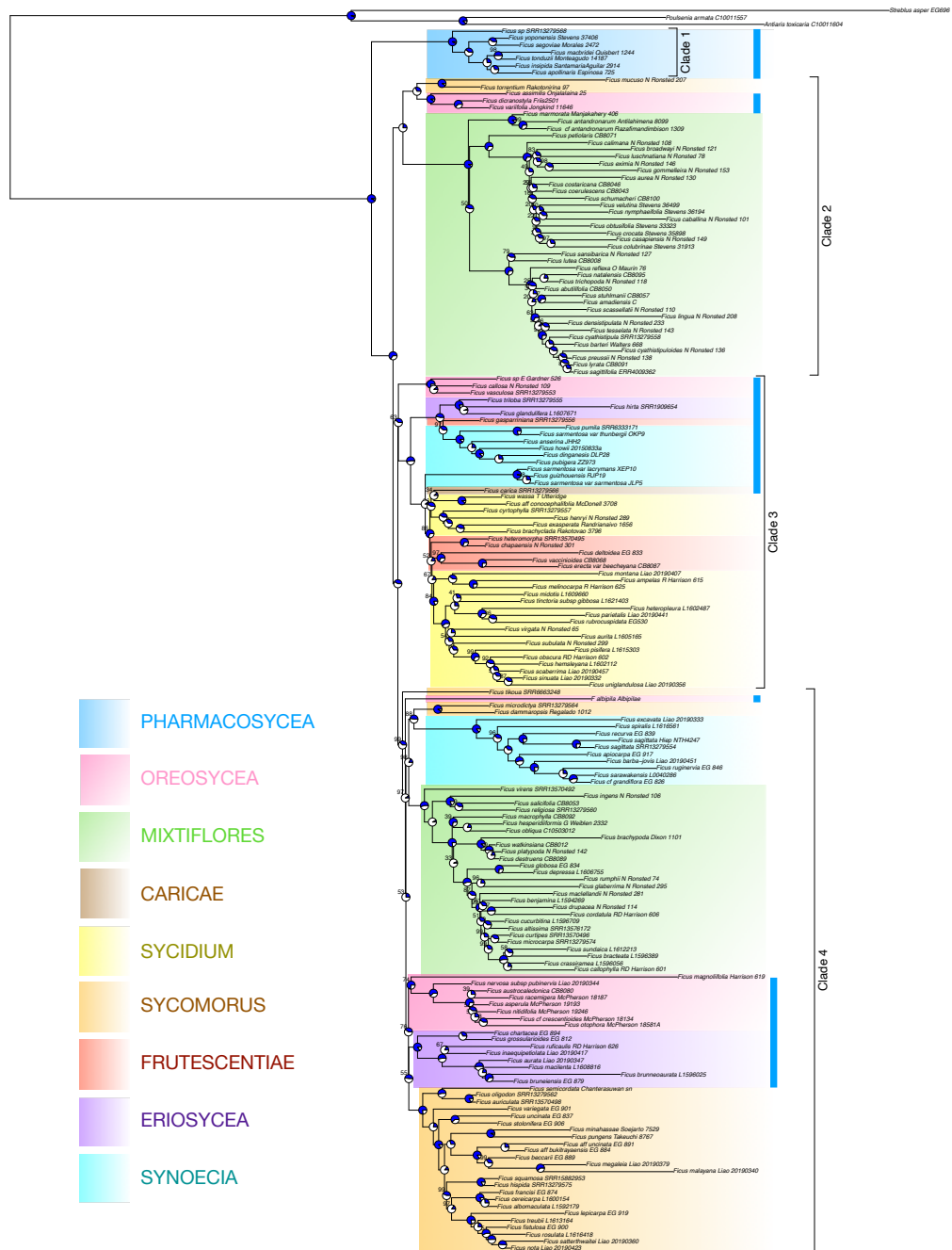


Figure S2. Maximum-likelihood tree based on whole chloroplast sequences. Node labels are bootstrap support (unlabeled nodes have 100% support). Pie charts indicate the proportion of nuclear quartets supporting each split (below). Clade labels at right refer to the four clades discussed in the main text. Blue bars at right denote taxa pollinated by members of subfamily Blastophaginae.

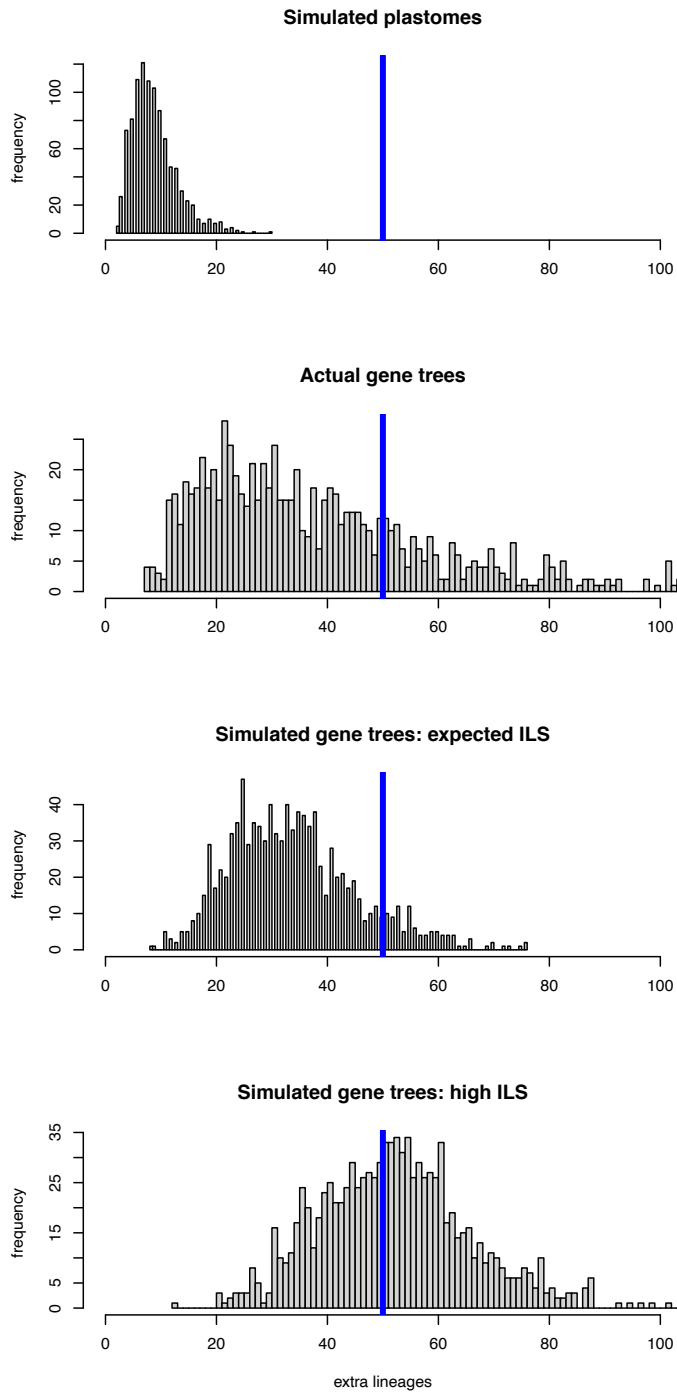


Figure S3. Histogram plots of simulation results, showing the number of extra lineages compared to the nuclear species tree, starting from the top, for (1) simulated chloroplast trees, (2) actual nuclear gene trees, (3) simulated nuclear gene trees under expected incomplete lineage sorting, and (4) simulated nuclear gene trees under high incomplete lineage sorting.

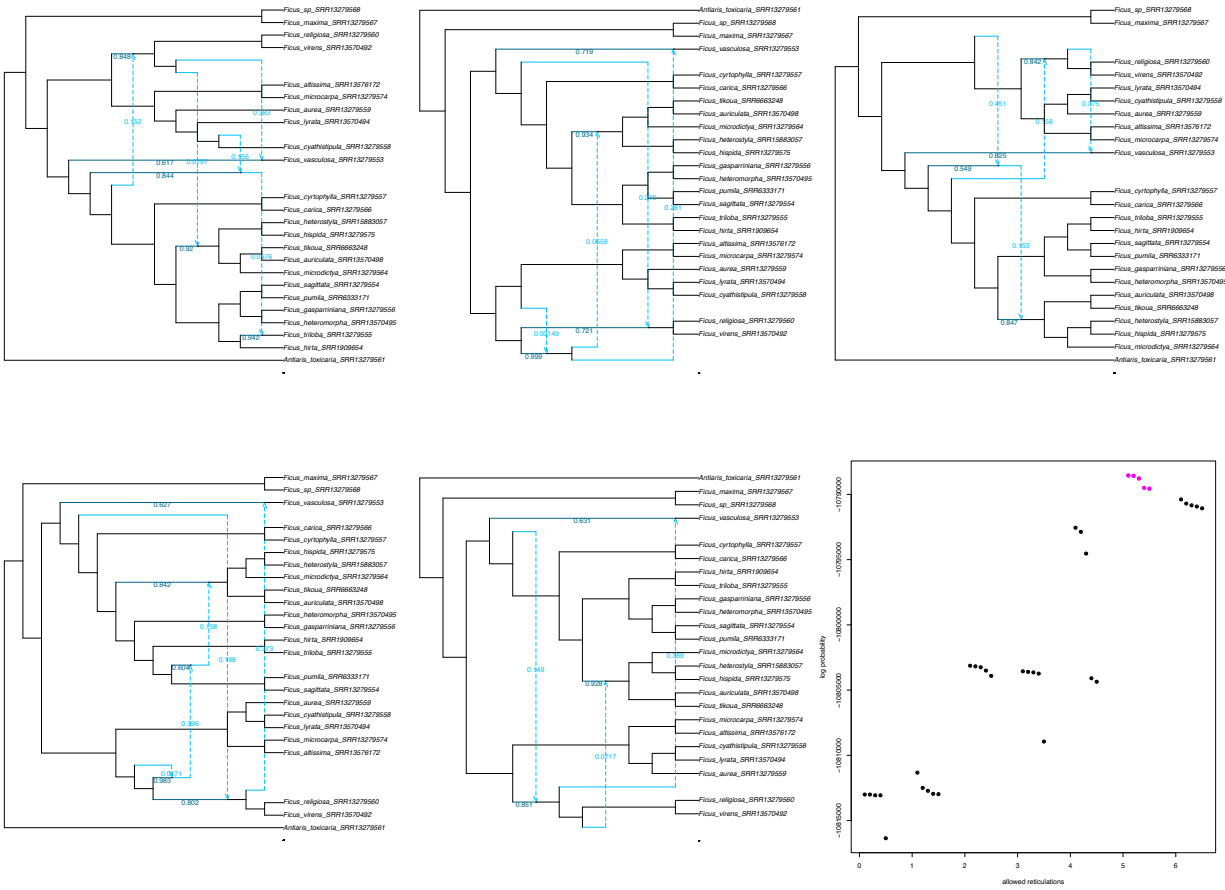


Figure S4. The best five maximum-pseudo-likelihood networks (in descending order from left to right, top to bottom) based on 13,586 nuclear gene trees, allowing 5 reticulations. Bottom right: plot of network scores for the best five networks each for 0 through 6 reticulations, with those allowing 5 reticulations highlighted. Inheritance probabilities appear in light blue for reticulated (minor) edges and in dark blue for the corresponding branches on the major (bifurcating) tree.

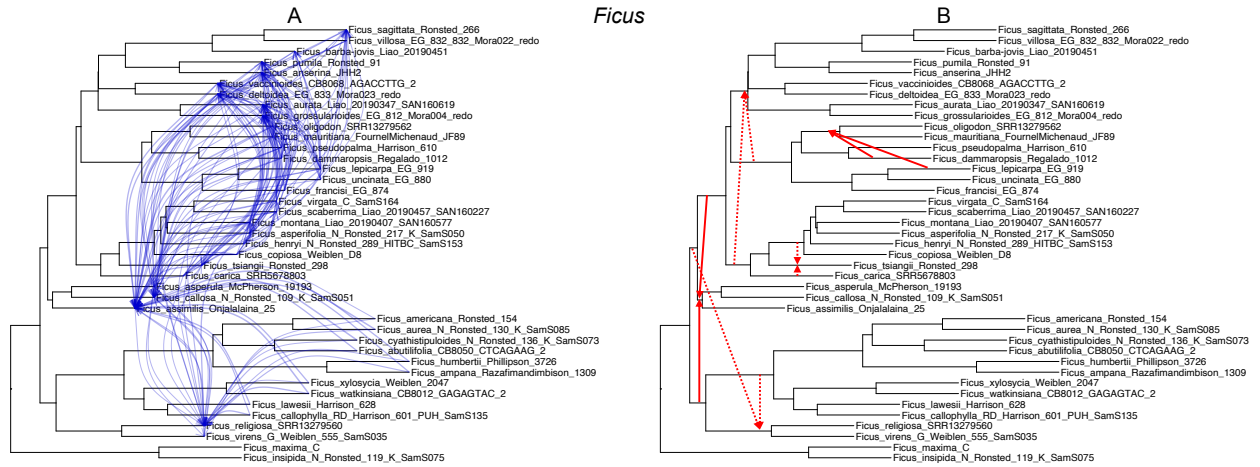


Figure S5. Analysis of gene tree conflict based on rooted triplet trees. A. All possible introgression events evident in the triplet trees. B. Interpretation of these events mapped onto the nuclear species tree.



Figure S6. Full DEC results for Moraceae. Left: most likely states. Right: pie charts showing proportional likelihoods for all states.

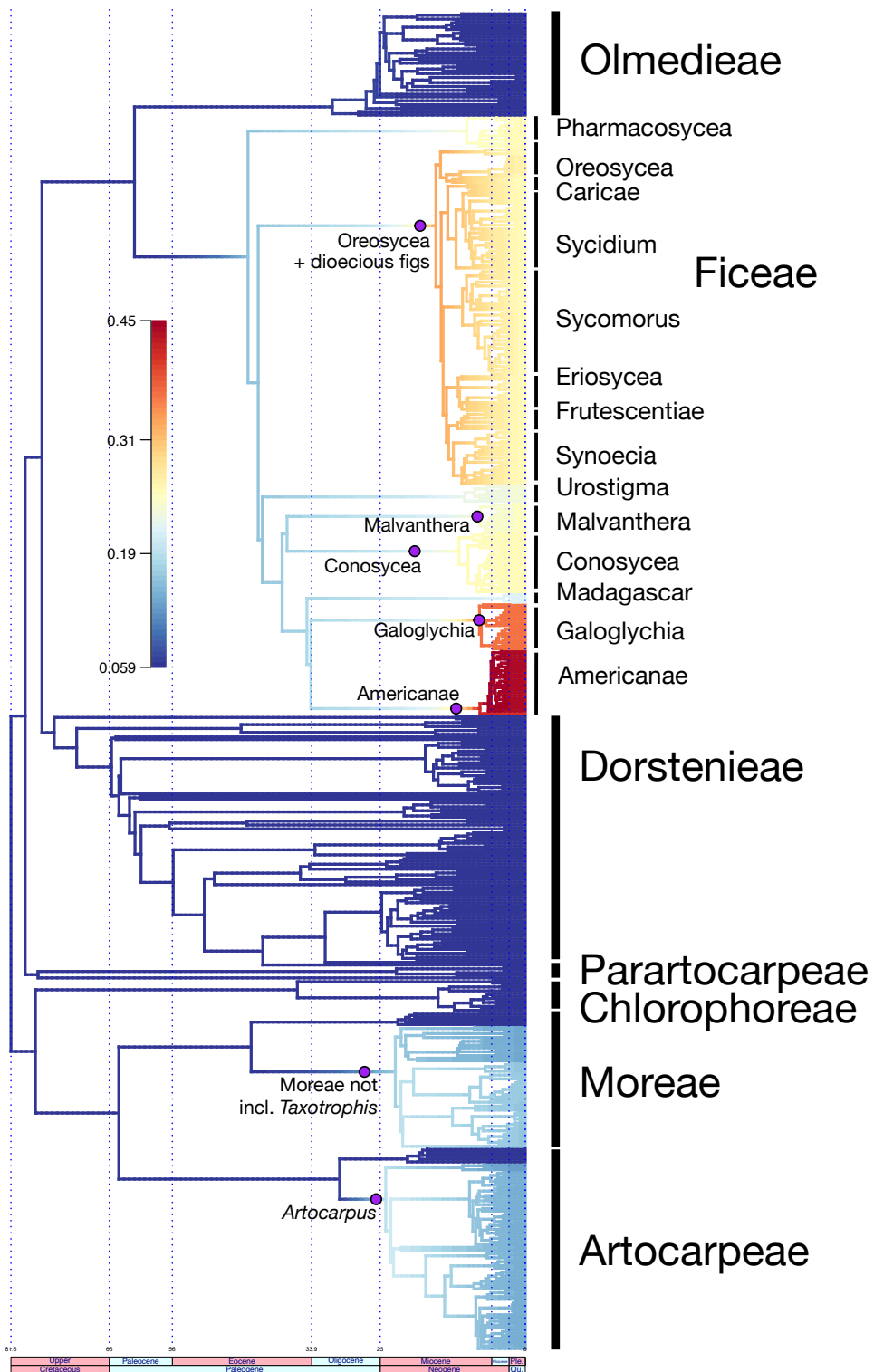


Figure S7. Time-calibrated phylogenetic tree with rate shifts inferred by BAMM (purple circles) and reticulations inferred by PhyloNet (dotted lines).

Tables

Table S1. Sample table. Samples used in this study, showing taxon, clade (following Clement et al. (1)), voucher information, locality, year collected, herbarium / barcode, label in phylogenetic trees, source of reads, Genbank SRA accession. References for read sources appear below the table.

Taxon	Tribe	voucher	locality	year	herbarium./ .barcode	label	Source	SRA
<i>Afromorus mesozygia</i> (Stapf) E.M.Gardner	Moreae	Daramola 330	Africa	F	Nigeria	Afromorus_mesozygia	2	SRR12282929
<i>Allaeanthus luzonicus</i> (Blanco) Fern.-Vill.	Dorstenieae	Kuo-fang Chung 2016	Philippines		HAST	Allaeanthus_luzonicus	3	SRR13092433
<i>Ampalis dimepate</i> Bureau	Moreae	Rakotonirina & al. 405	Madagascar	2014	MO	Ampalis_dimepate	2	SRR12282873
<i>Ampalis mauritiana</i> (Jacq.) Urb.	Moreae	Rakotonirina & Be 489	Madagascar		MO C,	Ampalis_mauritiana Antiaris_toxicaria_C1	2	SRR12283062
<i>Antiaris toxicaria</i> (J.F.Gmel.) Lesch.	Olmedieae	I. Friis 13236	Ethiopia	2009	C10011604	0011604	this study	SRR24706427
<i>Antiaropsis decipiens</i> K.Schum	Olmedieae	Zerega & al. 281 Breadfruit Institute grid no. K7	Papua New Guinea	2000	NY	Antiaropsis_decipiens	4	SRR3907583
<i>Artocarpus altilis</i> (Parkinson) Fosberg	Artocarpeae		USA (cult. from Samoa)	2000	PTBG	Artocarpus_altilis	5	SRR12282879
<i>Artocarpus altissimus</i> (Miq.) J.J. Smith	Artocarpeae	Gardner & al. 441	Java (cult.)	2016	F	Artocarpus_altissimus	5	SRR12283100
<i>Artocarpus anisophyllus</i> Miq.	Artocarpeae	Zerega & al. 606	Borneo	2013	CHIC	Artocarpus_anisophyllus	5	SRR3907106
<i>Artocarpus annulatus</i> F.M.Jarrett	Artocarpeae	Zerega & al. 985	Borneo	2016	F	Artocarpus_annulatus	5	SRR12283099
<i>Artocarpus bergii</i> E.M. Gardner, Arifiani & Zerega	Artocarpeae	Mahroji & al. 160	Moluccas	2013	BO, L, MO	Artocarpus_bergii	5	SRR12283019
<i>Artocarpus blancoi</i> (Elmer) Merr.	Artocarpeae	Ramos 42018	Philippines	1920	L	Artocarpus_blancoi	5	SRR12282902
<i>Artocarpus borneensis</i> Merr.	Artocarpeae	Zerega & al. 686	Borneo	2013	F, SAN	Artocarpus_borneensis	5	SRR12283067
<i>Artocarpus brevipedunculatus</i> (F.M.Jarrett) C.C.Berg	Artocarpeae	Zerega & al. 814	Borneo	2013	F, SAN	Artocarpus_brevipedu nculatus	5	SRR3907332
<i>Artocarpus calophyllus</i> Kurz	Artocarpeae	Zerega & al. 507	Thailand	2012	CHIC	Artocarpus_calophyllus	5	SRR12283043

<i>Artocarpus camansi</i> Blanco	Artocarpeae	Gardner 149	USA (cult.)	2015	PTBG	<i>Artocarpus_camansi</i>	6	SRR12283098
<i>Artocarpus chama</i> Buch.- Ham.	Artocarpeae	Zerega & al. 354	Bangladesh	2011	F	<i>Artocarpus_chama</i>	5	SRR12283079
<i>Artocarpus clementis</i> Merr.	Artocarpeae	Zerega & al. 739	Borneo	2012	F, SAN	<i>Artocarpus_clementis</i>	5	SRR3907263
<i>Artocarpus corneri</i> Kochummen	Artocarpeae	Fuchs 21347	Borneo	1963	K, SAR	<i>Artocarpus_corneri</i>	5	SRR12283015
<i>Artocarpus dadah</i> Miq.	Artocarpeae	Zerega & al. 694	Borneo	2013	F, SAN	<i>Artocarpus_dadah</i>	5	SRR3907210
<i>Artocarpus elasticus</i> Reinw. ex. Blume	Artocarpeae	Gardner & al. 87	Borneo	2014	F, SAN	<i>Artocarpus_elasticus</i>	5	SRR3907457
<i>Artocarpus excelsus</i> F.M.Jarrett	Artocarpeae	Gardner & al. 222	Borneo	2016	F, SAN, SNP	<i>Artocarpus_excelsus</i>	5	SRR3907331
<i>Artocarpus fretessii</i> Teijsm. & Binnend.	Artocarpeae	Zerega & al. 929	Borneo	2013	F, SAN	<i>Artocarpus_fretessii</i>	5	SRR3907410
<i>Artocarpus frutescens</i> (Becc.) Renner	Artocarpeae	Gardner & al. 411	Borneo	2016	F, SAN	<i>Artocarpus_frutescens</i>	5	SRR12283088
<i>Artocarpus fulvicortex</i> F.M.Jarrett	Artocarpeae	Lee YQ 35	Singapore	2012	CHIC, SING	<i>Artocarpus_fulvicortex</i>	5	SRR12283075
<i>Artocarpus glaucus</i> Blume	Artocarpeae	Zerega & al. 852	Borneo	2013	F, SAN	<i>Artocarpus_glaucus</i>	5	SRR12283074
<i>Artocarpus gomezianus</i> Wall. ex Tréc	Artocarpeae	Zerega & al. 533	Thailand	2012	CHIC, KKU	<i>Artocarpus_gomezianus</i>	5	SRR12283072
<i>Artocarpus gongshanensis</i> S.K. Wu ex. C.Y. Wu & S.S. Chang	Artocarpeae	Gaoligong Shan Biodiversity Survey 24987	China	2005	HAST, MO	<i>Artocarpus_gongshanensis</i>	5	SRR12283006
<i>Artocarpus griffithii</i> (King) Merr.	Artocarpeae	Zerega & al. 216	Malaysia (Peninsula)	2002	F	<i>Artocarpus_griffithii</i>	5	SRR12283066
<i>Artocarpus heterophyllus</i> Lam.	Artocarpeae	Gardner & al. 98	Borneo	2014	F, SAN ATREE (photo voucher CHIC)	<i>Artocarpus_heterophyllus</i>	5	SRR3907497
<i>Artocarpus hirsutus</i> Lam.	Artocarpeae	Zerega & al. 953	India	2013	F, SAN CHIC)	<i>Artocarpus_hirsutus</i>	5	SRR12283116
<i>Artocarpus hispidus</i> F.M.Jarrett	Artocarpeae	Zerega & al. 258	Malaysia (Peninsula)	2002	F	<i>Artocarpus_hispidus</i>	5	SRR12283071
<i>Artocarpus horridus</i> F.M.Jarrett	Artocarpeae	Gardner & al. 437	Java (cult.)	2016	F	<i>Artocarpus_horridus</i>	5	SRR12283095
<i>Artocarpus humilis</i> Becc.	Artocarpeae	Gardner & al. 258	Borneo	2016	F, SAN	<i>Artocarpus_humilis</i>	5	SRR12283050
<i>Artocarpus hypargyreus</i> Hance ex. Benth.	Artocarpeae	Gardner & al. 170	China (Hong Kong)	2016	F, HK	<i>Artocarpus_hypargyreus</i>	5	SRR12283054

<i>Artocarpus integer</i> (Thunb.) Merr. var. <i>integer</i>	Artocarpeae	Zerega & al. 918 Amin & Francis	Borneo	2013	F, SAN	<i>Artocarpus_integer</i>	5	SRR3907371
<i>Artocarpus jarrettiae</i> Kochummen	Artocarpeae	SAN120933	Borneo	1987	K, L, SAN	<i>Artocarpus_jarrettiae</i>	5	SRR12282898
<i>Artocarpus kemando</i> Miq. <i>Artocarpus lacucha</i> Roxb. ex Buch.-Ham.	Artocarpeae	Zerega & al. 612	Borneo	2013	F, SAN	<i>Artocarpus_kemando</i>	5	SRR3907163
<i>Artocarpus lamellosus</i> Blanco	Artocarpeae	Zerega & al. 420 Gaerlan & al. PPI10374	Thailand Philippines	2012 1992	CHIC, KKU L	<i>Artocarpus_lacucha</i> <i>Artocarpus_lamellosus</i>	5 5	SRR3907082 SRR12282893
<i>Artocarpus limpato</i> Miq. <i>Artocarpus longifolius</i> Becc. subsp. <i>adpressus</i> Berg	Artocarpeae	Zerega & al. 609 Gardner & al. 412 Wang M. & al.	Borneo	2013 2016	F, SAN F, SAR	<i>Artocarpus_limpato</i> <i>Artocarpus_longifolius</i> <i>_subsp_adpressus</i>	5 5	SRR3907129 SRR12283094
<i>Artocarpus lowii</i> King <i>Artocarpus maingayi</i> King	Artocarpeae	MWL2 Zerega & al. 257 Breadfruit	Malaysia (Peninsula)	2013 2002	CHIC F	<i>Artocarpus_lowii</i> <i>Artocarpus_maingayi</i>	5 5	SRR3907544 SRR12283069
<i>Artocarpus mariannensis</i> Trécul	Artocarpeae	institute grid no. DD4	USA (cult. from Micronesia)	2000	PTBG	<i>Artocarpus_mariannen</i> <i>sis</i>	5	SRR12283068
<i>Artocarpus melinoxylus</i> Gagnep.	Artocarpeae	D.D. Soejarto & al. 14222	Vietnam	2008	F	<i>Artocarpus_melinoxyl</i> <i>us</i>	5	SRR12282896
<i>Artocarpus montanus</i> E.M.Gardner & Zerega <i>Artocarpus nobilis</i> Thwaites	Artocarpeae	Averyanov & al. VH1819 Jayasuriya 3283	Vietnam Sri Lanka	1995 1985	LE, MO, P US	<i>Artocarpus_montanus</i> <i>Artocarpus_nobilis</i>	5 5	SRR12283017 SRR12282895
<i>Artocarpus obtusus</i> F.M.Jarrett <i>Artocarpus odoratissimus</i> Blanco	Artocarpeae	Zerega & al. 729 Zerega & al. 618	Borneo Borneo	2013 2013	F, SAN F, SAN	<i>Artocarpus_obtus</i> <i>Artocarpus_odoratissi</i> <i>mus</i>	5 5	SRR12282892 SRR12283064
<i>Artocarpus ovatus</i> Blanco <i>Artocarpus papuanus</i> (Becc.) Renner <i>Artocarpus parvus</i> Gagnep.	Artocarpeae	Zerega & al. 202 Zerega & al. 61 Zerega & al. 911	USA (Hawaii) Papua New Guinea Malaysia (cult.)	2000 2000 2013	F NY F, SAN	<i>Artocarpus_ovatus</i> <i>Artocarpus_papuanus</i> <i>Artocarpus_parvus</i>	5 5 5	SRR12283115 SRR12283063 SRR12283061
<i>Artocarpus petelotii</i> Gagnep. <i>Artocarpus pinnatisectus</i> Merr. <i>Artocarpus pithecoallus</i> C.Y. Wu	Artocarpeae	Soejarto & al. 14435 Stone & Fuentes PPI3911 Li Jianwu 3200	Vietnam Philippines China	2009 1992 2013	F K KUN	<i>Artocarpus_petelotii</i> <i>Artocarpus_pinnatisect</i> <i>us</i> <i>Artocarpus_pithecoall</i> <i>lus</i>	5 5 5	SRR3907350 SRR12282895 SRR12282890

<i>Artocarpus primackii</i> Kochummen	Artocarpeae	Zerega & al. 687	Malaysia (Borneo)	2013	F, SAN	Artocarpus_primackii	5	SRR12282992
<i>Artocarpus rigidus</i> Blume subsp. <i>rigidus</i>	Artocarpeae	Zerega & al. 728	Malaysia (Borneo)	2013	F, SAN	Artocarpus_rigidus	5	SRR3907189
<i>Artocarpus rubrosoccatu</i> E.M.Gardner, Chaveer. & Zerega	Artocarpeae	Zerega & al. 517	Thailand	2012	CHIC, KKU	Artocarpus_rubrosoc atus	5	SRR12283080
<i>Artocarpus rubrovenius</i> Warb.	Artocarpeae	Burley 84	Philippines	1987	F	Artocarpus_rubroveni us	5	SRR12283021
<i>Artocarpus sarawakensis</i> F.M.Jarrett	Artocarpeae	Jugah Kudi S.23876	Malaysia (Borneo)	1965	L	Artocarpus_sarawaken sis	5	SRR12282881
<i>Artocarpus scortechinii</i> King	Artocarpeae	Zerega & al. 209	Malaysia (Peninsula)	2002	F	Artocarpus_scortechin ii	5	SRR12283022
<i>Artocarpus sepicanus</i> Diels	Artocarpeae	Weiblen & al. 1701	Papua New Guinea	2000	MIN	Artocarpus_sepicanus	5	SRR3907521
<i>Artocarpus sericicarpus</i> F.M.Jarrett	Artocarpeae	Zerega & al. 771	Malaysia (Borneo)	2013	F, SAN	Artocarpus_sericicarp us	5	SRR3907288
<i>Artocarpus styracifolius</i> Pierre	Artocarpeae	Gardner & al. 176	China (Hong Kong)	2016	F, HK	Artocarpus_styracifoli us	5	SRR12283038
<i>Artocarpus subrotundifolius</i> Elmer	Artocarpeae	Wenzel 1576	Philippines	1915	F	Artocarpus_subrotundi folius	5	SRR12282887
<i>Artocarpus sumatranus</i> Jarrett	Artocarpeae	Ambriansyah AA2766	Sumatra	2004	L	Artocarpus_sumatranu s	5	SRR12282886
<i>Artocarpus tamaran</i> Becc.	Artocarpeae	Gardner & al. 92	Malaysia (Borneo)	2014	F, SAN	Artocarpus_tamaran	5	SRR3907480
<i>Artocarpus teijsmannii</i> Miq.	Artocarpeae	Zerega & al. 946	Malaysia (Borneo)	2013	F, SAN	Artocarpus_teijsmanni i	5	SRR3907434
<i>Artocarpus thailandicus</i> C.C.Berg	Artocarpeae	Zerega & al. 402	Thailand	2012	CHIC	Artocarpus_thailandic us	5	SRR3907065
<i>Artocarpus tomentosulus</i> F.M.Jarrett	Artocarpeae	Zerega & al. 617	Malaysia (Borneo)	2013	F, SAN	Artocarpus_tomentosu lus	5	SRR12283060
<i>Artocarpus tonkinensis</i> Chev. ex. Gagnep.	Artocarpeae	Gardner & al. 174	China (Hong Kong)	2016	F, HK	Artocarpus_tonkinensi s	5	SRR12283037
<i>Artocarpus treculianus</i> Elmer	Artocarpeae	Elmer 12468	Philippines	1910	US	Artocarpus_treculianu s	5	SRR12282985
<i>Artocarpus treculianus</i> Elmer (<i>A. nigrescens</i> Elmer)	Artocarpeae	Ramos BS-34736	Philippines	1919	US	Artocarpus_nigrescens	5	SRR12282995
<i>Artocarpus vrieseanus</i> Miq. var. <i>refractus</i> (Becc.) F.M.Jarrett	Artocarpeae	Hoogland 4822	Papua New Guinea	1954	L	Artocarpus_vrieseanus _var_refractus	5	SRR12282981
<i>Artocarpus vriesianus</i> Miq. var. <i>vrieseanus</i>	Artocarpeae	Weiblen & al. 1229	Papua New Guinea	2000	MIN	Artocarpus_vrieseanus _var_vrieseanus	5	SRR12283057
<i>Artocarpus xanthocarpus</i> Merr.	Artocarpeae	Yang 15648	Taiwan (cult.)	2003	MO	Artocarpus_xanthocar pus	5	SRR12283033

					ATREE			
					(photo			
					voucher			
					CHIC)			
<i>Artocarpus zeylanicus</i> (F.M.Jarrett) E.M.Gardner & Zerega	Artocarpeae	Zerega & al. 956 Weiblen & al.	India	2013		Artocarpus_zeylanicus	5	SRR12283117
<i>Bagassa guianensis</i> Aubl.	Moreae	1677	French Guiana	2000	MIN	Bagassa_guianensis	7	SRR12283114
<i>Batocarpus amazonicus</i> (Ducke) Fosberg	Artocarpeae	Salidas 1233	Bolivia	1990	F	Batocarpus_amazonicus	5	SRR12283113
<i>Batocarpus costaricensis</i> Standley & L. O. Williams	Artocarpeae	Weiblen & al. 1463	Costa Rica	2000	MIN	Batocarpus_costaricensis	5	SRR12283111
<i>Batocarpus orinocensis</i> H.Karst.	Artocarpeae	Vasquez 27440	Peru	2001	F	Batocarpus_orinocensis	5	SRR12283110
<i>Bleekrodea</i> <i>madagascariensis</i>	Dorstenieae	MYA 375(P)		2009		Bleekrodea_madagascariensis	8	
<i>Boehmeria nivea</i> (L.) Gaudich.	Outgroup: Urticaceae	Hu S.Y. 8113 J.R. Timberlake, T. Müller & F. Crawford	<i>Boehmeria nivea</i>	K		2	2	ERS4414210
<i>Bosqueiopsis gillettii</i> <i>Brosimum acutifolium</i> Huber subsp. <i>obovatum</i> (Ducke) C.C. Berg	Dorstenieae	5767(P)		2009		<i>Bosqueiopsis gillettii</i>	3	SRR13188663
<i>Brosimum alicastrum</i> subsp. <i>alicastrum</i>	Dorstenieae	Killeen 4457	Bolivia	1992	F	<i>Brosimum acutifolium</i>	3	SRR12282976
<i>Brosimum alicastrum</i> subsp. <i>bolivarense</i>	Dorstenieae	Gardner 23	USA, Florida (Cult.)	2013	CHIC	<i>Brosimum alicastrum</i>	3	SRR12283030
<i>Brosimum amazonicum</i>	Dorstenieae	G.P. Cooper 441	Panama	1905	F	<i>Brosimum alicastrum</i> subsp. <i>bolivarense</i>	3	SRR12282975
<i>Brosimum costaricanum</i>	Dorstenieae	G. Weiblen 1522	Brazil	2002	F	<i>Brosimum amazonicum</i>	3	SRR13089487
<i>Brosimum gaudichaudii</i>	Dorstenieae	C. Kernan 27	Costa Rica	1988	F	<i>Brosimum costaricanum</i>	3	SRR12282973
<i>Brosimum glaucum</i>	Dorstenieae	Mendes & al. 332	Brazil	2002	F	<i>Brosimum gaudichaudii</i>	3	SRR12283029
<i>Brosimum guianense</i>	Dorstenieae	Mori & al. 13882 Morales & Ureña	Brazil	1981	NY	<i>Brosimum glaucum</i>	3	SRR12282977
<i>Brosimum lactescens</i>	Dorstenieae	5258	Costa Rica	1996	F	<i>Brosimum guianense</i>	3	SRR12282972
<i>Brosimum longifolium</i>	Dorstenieae	Moya & al. 138 Vasquez et al.	Bolivia	2008	MO	<i>Brosimum lactescens</i>	3	SRR13089488
<i>Brosimum multinervium</i> C.C. Berg	Dorstenieae	4044 Vasquez & Chavez 25075	Peru	1987	F	<i>Brosimum longifolium</i>	3	SRR12282970
<i>Brosimum oligandrum</i>	Dorstenieae	W. Han 3649	French Guiana	1989	F	<i>Brosimum multinervium</i>	3	SRR12282969
						<i>Brosimum oligandrum</i>	3	SRR12282963

<i>Brosimum parinarioides</i> subsp. <i>ampticoma</i> (Ducke) C.C. Berg	Dorstenieae	Vasquez & Jaramillo 3817 Maciel & Rosario	Peru	1983	F	<i>Brosimum_parinarioides</i>	3	SRR12282967
<i>Brosimum potabile</i> Ducke	Dorstenieae	1552	Brazil	1989	F	<i>Brosimum_potabile</i>	3	SRR12282966
<i>Brosimum rubescens</i>	Dorstenieae	McPherson 20944 Prance & al. P	Panama	2009	F	<i>Brosimum_rubescens</i>	3	SRR12282965
<i>Brosimum sprucei</i>	Dorstenieae	25416	Brazil	1977	F	<i>Brosimum_sprucei</i>	3	SRR12282964
<i>Brosimum utile</i>	Dorstenieae	Galdames 4403	Panama	2000	F	<i>Brosimum_utile</i>	3	SRR12283028
<i>Broussonetia greveana</i>	Dorstenieae	O. Pascal and F. Hallé 677 (NY)				<i>Broussonetia_greveana</i>	8	
<i>Broussonetia kazinoki</i> Siebold	Dorstenieae	Chase 17827			K	<i>Broussonetia_kazinoki</i>	8	
<i>Broussonetia kurzii</i>	Dorstenieae	Al Gentry and Chawalit Niyomdham 66546 (MO)				<i>Broussonetia_kurzii</i>	8	
<i>Broussonetia papyrifera</i>	Dorstenieae	none	Zhejiang, China			<i>Broussonetia_papyrifera</i>	9	SRR11873442
<i>Castilla elastica</i> Cerv.	Olmedieae	Chase 19850 Rodríguez González, Alexánder			K	<i>Castilla_elastica_Chase19850</i>	2	ERS4414204
<i>Castilla tunu</i> Hemsl.	Olmedieae	Francisco 13002	Costa Rica	2010	MO	<i>Castilla_tunu_Rodriguez_13002</i>	this study	SRR24706426
<i>Castilla ulei</i>	Olmedieae	F_2312790			F 2312790	<i>Castilla_ulei_F_2312790</i>	this study	SRR24706343
<i>Cecropia ficifolia</i> Warb. ex Sneathl.	Outgroup: Urticaceae	Berg & al. 18418	Brazil	1973	K	<i>Cecropia_ficifolia</i>	2	ERS4414209
<i>Clarisia biflora</i> Ruiz & Pav.	Artocarpeae	Weiblen & al. 1460		2000		<i>Clarisia_biflora</i>	5	SRR12283032
<i>Clarisia ilicifolia</i> (Spereng.) Lanj. & Rossbach	Artocarpeae	Souza 2492	Brazil		F	<i>Clarisia_ilicifolia</i>	2	SRR12283012
<i>Clarisia racemosa</i> Ruiz & Pav.	Artocarpeae	Assunção 690	Brazil	1997	F	<i>Clarisia_racemosa</i>	5	SRR12283109
<i>Dorstenia africana</i>	Dorstenieae	Carvalho 5308(NY)		1993		<i>Dorstenia_africana</i>	8	
<i>Dorstenia alta</i>	Dorstenieae	A Ntemi Sallu 638(MO)		2001		<i>Dorstenia_alta</i>	8	
<i>Dorstenia angusticornis</i>	Dorstenieae	BO Daramola 665(MO)		1995		<i>Dorstenia_angusticornis</i>	8	
<i>Dorstenia appendiculata</i>	Dorstenieae	Andre MA Amorim et al. 1941(NY)		1996		<i>Dorstenia_appendiculata</i>	8	
<i>Dorstenia astyanactis</i>	Dorstenieae	Haba, P.K. 677(P)		2010		<i>Dorstenia_astyanactis</i>	8	
<i>Dorstenia bahiensis</i>	Dorstenieae	H174(P)		1993		<i>Dorstenia_bahiensis</i>	8	

<i>Dorstenia barnimiana</i>	Dorstenieae	J Lavranos & MB Bleck 19480(MO)	1981	<i>Dorstenia_barnimiana</i>	8	
<i>Dorstenia benguellensis</i>	Dorstenieae	AS Mkeya et al 1109(MO)	1998	<i>Dorstenia_benguellensis</i>	8	
<i>Dorstenia bonijesu</i>	Dorstenieae	V.F. Ferreirov 1729(P)	1981	<i>Dorstenia_bonijesu</i>	8	
<i>Dorstenia brasiliensis</i>	Dorstenieae	MJ Jansen-Jacobs et al 4436(NY)	1995	<i>Dorstenia_brasiliensis</i>	8	
<i>Dorstenia brownii</i>	Dorstenieae	MA Mwangoka et al 3606(MO)	2004	<i>Dorstenia_brownii</i>	8	
<i>Dorstenia buchananii</i>	Dorstenieae	NC Chase 5466(F)	1954	<i>Dorstenia_buchananii</i>	8	
<i>Dorstenia caimitensis</i>	Dorstenieae	WJ Eyerdam(F)	1927	<i>Dorstenia_caimitensis</i>	8	
<i>Dorstenia carautae</i>	Dorstenieae	JM Silva 782(MO)	1990	<i>Dorstenia_carautae</i>	8	
<i>Dorstenia cayapia</i> subsp				<i>Dorstenia_cayapia_ssp</i>		
<i>cayapia</i>	Dorstenieae	Andre Ma Carvalho et al 6710(NY)	1999	<i>_Cayapia</i>	8	
<i>Dorstenia cayapia</i> subsp				<i>Dorstenia_cayapia_ssp</i>		
<i>vitifolia</i>	Dorstenieae	Roberto Fontes Vieira et al 554(NY)	1990	<i>_vitifolia</i>	8	
<i>Dorstenia ciliata</i>	Dorstenieae	X.M. van der Burgt 576(P)	2000	<i>Dorstenia_ciliata</i>	8	
<i>Dorstenia contrajerva</i>	Dorstenieae	Ulises Chavarria 809(F)	193	<i>Dorstenia_contrajerva</i>	8	
<i>Dorstenia djettii</i>	Dorstenieae	J Amponsah et al 1413(MO)	1996	<i>Dorstenia_djettii</i>	8	
<i>Dorstenia drakeana</i>	Dorstenieae	SD Koch et al 87195(NY)	1987	<i>Dorstenia_drakeana</i>	8	
<i>Dorstenia elliptica</i>	Dorstenieae	J. Nning 20(MO)	1997	<i>Dorstenia_elliptica</i>	8	
<i>Dorstenia erythrandra</i>	Dorstenieae	WJ Eyerdam 298(F)	1927	<i>Dorstenia_erythrandra</i>	8	
<i>Dorstenia excentrica</i>	Dorstenieae	M Nee 22374(F)	1981	<i>Dorstenia_excentrica</i>	8	
<i>Dorstenia fawcetti</i>	Dorstenieae	CC Berg 990(NY)	1980	<i>Dorstenia_fawcetti</i>	8	
<i>Dorstenia flagellifera</i>	Dorstenieae	W.J. Eyerdam 196(F)	1927	<i>Dorstenia_flagellifera</i>	8	
<i>Dorstenia foetida</i>	Dorstenieae	William Burger 2844(F)	1963	<i>Dorstenia_foetida</i>	3	SRR13188662
<i>Dorstenia goetzei</i>	Dorstenieae	PB Phillipson 4801(MO)	1997	<i>Dorstenia_goetzei</i>	8	
<i>Dorstenia hildebrandtii</i>				<i>Dorstenia_hildebrandtii</i>		
var. <i>schlechteri</i>	Dorstenieae	L Festo 648(MO)	2000	<i>i_var_schlechteri</i>	8	
<i>Dorstenia hirta</i>	Dorstenieae	FO Souza et al 21(NY)	2000	<i>Dorstenia_hirta</i>	8	
<i>Dorstenia holstii</i>	Dorstenieae	A Ntemi Sallu 645(MO)	2000	<i>Dorstenia_holstii</i>	8	
<i>Dorstenia indica</i>	Dorstenieae	L Bernardi 16022(MO)	1975	<i>Dorstenia_indica</i>	8	
<i>Dorstenia kameruniana</i>	Dorstenieae	OA Kibure & H Bofu 1045(MO)	2003	<i>Dorstenia_kameruniana</i>	8	
<i>Dorstenia lagoensis</i>	Dorstenieae			<i>Dorstenia_lagoensis</i>	8	
<i>Dorstenia lindeniana</i>	Dorstenieae	Gayle C Jone et al 3130(F)	1966	<i>Dorstenia_lindeniana</i>	8	

<i>Dorstenia mannii</i>	Dorstenieae	Simons, E.L.A.N. & R. Westerduijn 300(P)	1999	<i>Dorstenia mannii</i>	8
<i>Dorstenia milaneziana</i>	Dorstenieae	WW Thomas, A Amorin, J Jardim 11078(NY)	1996	<i>Dorstenia milaneziana</i>	8
<i>Dorstenia morifolia</i>	Dorstenieae			<i>Dorstenia morifolia</i>	8
<i>Dorstenia oligogyna</i>	Dorstenieae	J.J. Wieringa 3005(P)	1994	<i>Dorstenia oligogyna</i>	8
<i>Dorstenia peruviana</i>	Dorstenieae	A Fuentes 4353(MO)	2002	<i>Dorstenia peruviana</i>	8
<i>Dorstenia petraea</i>	Dorstenieae	Grady L Webster 4073(NY)	1951	<i>Dorstenia petraea</i>	8
<i>Dorstenia picta</i>	Dorstenieae	RE Gereau et al. 5189(MO)	1993	<i>Dorstenia picta</i>	8
<i>Dorstenia poinsettiiifolia</i>	Dorstenieae	Simons, E.L.A.N. & R. Westerduijn 319(P)	1999	<i>Dorstenia poinsettiiifolia</i>	8
<i>Dorstenia psilurus</i>	Dorstenieae	G.A. Zenker s.n.	1911	<i>Dorstenia psilurus</i>	8
<i>Dorstenia ramosa</i> subsp.				<i>Dorstenia ramosa</i> subsp.	
<i>Dolichocaula</i>	Dorstenieae	M.D.M. Vianna Filho 2020(F)	s.d.	<i>Dolichocaula</i>	8
<i>Dorstenia roigii</i>	Dorstenieae	Ekman 17973(F)	1923	<i>Dorstenia roigii</i>	8
<i>Dorstenia soerensenii</i>	Dorstenieae	WJJO de Wilde 9392(MO)	1965	<i>Dorstenia soerensenii</i>	8
<i>Dorstenia strangii</i>	Dorstenieae			<i>Dorstenia strangii</i>	8
<i>Dorstenia tayloriana</i> var.				<i>Dorstenia tayloriana</i> var.	
<i>tayloriana</i>	Dorstenieae	MA Mwangoka & A Kalage 2673(MO)	2002	<i>tayloriana</i>	8
<i>Dorstenia tenera</i>	Dorstenieae	F.J. Breteler 9984(P)	1990	<i>Dorstenia tenera</i>	8
<i>Dorstenia tentaculata</i>	Dorstenieae			<i>Dorstenia tentaculata</i>	8
<i>Dorstenia tenuis</i>	Dorstenieae	S.G. Tressens, E. Cabral, S. Cáceres, M. Urbani & C. Zamudio 2911(F)	1984	<i>Dorstenia tenuis</i>	8
<i>Dorstenia tubicina</i>	Dorstenieae			<i>Dorstenia tubicina</i>	8
<i>Dorstenia turbinata</i>	Dorstenieae	M Cheek 11086(MO)	2002	<i>Dorstenia turbinata</i>	8
<i>Dorstenia turnerifolia</i>	Dorstenieae			<i>Dorstenia turnerifolia</i>	8
<i>Dorstenia umbricola</i>	Dorstenieae	M. Alexiades, V. Pasha(NY)	1989	<i>Dorstenia umbricola</i>	8
<i>Dorstenia urceolata</i>	Dorstenieae	P.J.M. Maas & P. Carauta 3233(F)	1977	<i>Dorstenia urceolata</i>	8
<i>Dorstenia variifolia</i>	Dorstenieae	J&J Lovett et al. 2135(MO)	1987	<i>Dorstenia variifolia</i>	8
<i>Dorstenia warneckeii</i>	Dorstenieae	D.W. Thomas 3660(P)	1984	<i>Dorstenia warneckeii</i>	8
<i>Dorstenia yambuyaensis</i>	Dorstenieae	Mikio Kaji 24(P)	1983	<i>Dorstenia yambuyaensis</i>	8
<i>Dorstenia zanzibarica</i>	Dorstenieae	J Lovett 895(MO)	1986	<i>Dorstenia zanzibarica</i>	8
<i>Elatostema retrohirtum</i>	Outgroup:			<i>Elatostema retrohirtum</i>	
<i>Dunn</i>	Urticaceae	Monro & al 7601	K	<i>Dunn</i>	2

ERS4414235

<i>Fatoua pilosa</i> Gaudich	Dorstenieae	Taylor 218	Indonesia	1981		K (K00061825 2)	Fatoua_pilosa	2	ERS4414197
<i>Fatoua villosa</i>	Dorstenieae	E. Gardner 27 (CHIC)		2013			Fatoua_villosa	3	SRR13188661
<i>Ficus abutilifolia</i> (Miq.) Miq.	GALOGLY CHIA	C. Baraloto 8050	CF 36261		ICTB		Ficus_abutilifolia_CB 8050	This study	SRR24706213
<i>Ficus adhatodifolia</i> Schott	PHARMAC OSYCEA	S. Liao & al. 20180228	Cult. (HITBC) s.n. Brazil	2018	HSNU		Ficus_adhatodifolia_H SNU20180228	This study	SRR24706120
<i>Ficus albert-smithii</i> Standl.	AMERICA NAE	N. Rønsted 105	Cult. (BG) 1989-519. No. prov.	2003	K		Ficus_albert-smithii_N_Ronsted_10 5	This study	SRR24706403
<i>Ficus albomaculata</i> C.C.Berg	SYCOCAR PUS	EG 855A	Borneo, Sarawak	2020	SAR, SING		Ficus_albomaculata_E G_855A	This study	SRR24706392
<i>Ficus albomaculata</i> C.C.Berg	SYCOCAR PUS	Othman et al. S.61745	Borneo, Sarawak	1988	L.1592179		Ficus_albomaculata_L 1592179	This study	SRR24706381
<i>Ficus altissima</i> Blume	CONOSYC EA	unknown	Cult. (Kunming Institute of Botany)	2020			Ficus_altissima_SRR1 3576172	NCBI BioProject PRJNA665 159	SRR13576172
<i>Ficus amadiensis</i> De Wild.	GALOGLY CHIA	Vollesen, & C. Whitehouse 3517	Tanzania	1997	C, C10503002		Ficus_amadiensis_C	This study	SRR24706370
<i>Ficus americana</i> Aubl.	AMERICA NAE	N. Rønsted 154	Cult. (BG) 1994- 0678. No. prov.	2003	BG		Ficus_americana_Ron sted_154	This study	SRR24706359
<i>Ficus ampana</i> C.C.Berg	MADAGA SCAR	Razafimandimbison, Sylvain Georges 1309	Madagascar	2016	MO		Ficus_ampana_Razafi mandimbison_1309	This study	SRR24706348
<i>Ficus ampelos</i> Burm.f.	ASPERAE	R.D. Harrison 615	Philippines, Palanan Forest Dynamics Plot, NE Luzon	2004	PUH/MIN		Ficus_ampelas_R_Har rison_615	This study	SRR24706234
<i>Ficus androchaete</i> Corner	ERIOSYCE A	Rantai Jawa and Lai Shak Teck S.74172	Borneo, Sarawak	1996	L.1593813		Ficus_androchaete_L1 593813	This study	SRR24706223
<i>Ficus anserina</i> (Corner) C.C.Berg	SYNOECI A	Zhen Zhang, Xiao-Mei Wang, Hai-Yan Gao, JHH2	China, Yunnan, Xishuangbanna, Jinghong	2015	HSNU		Ficus_anserina_JHH2	This study	SRR24706342
<i>Ficus antandronarum</i> (H.Perrier) C.C.Berg	MADAGA SCAR	Antilahimena, Patrice 8099	Madagascar	2012	MO		Ficus_antandronarum_ Antilahimena_8099	This study	SRR24706331
<i>Ficus apiocarpa</i> (Miq.) Miq.	SYNOECI A	B. Chanterasuwan s.n.	Thailand	2005	No voucher information		Ficus_apiocarpa_Chan terasuwan_sn	This study	SRR24706320

<i>Ficus apiocarpa</i> (Miq.) Miq.	SYNOECI A	EG 917	Borneo, Sarawak	2020	SAR, SING	Ficus_apiocarpa_EG_917	This study	SRR24706309
<i>Ficus apiocarpa</i> (Miq.) Miq.	SYNOECI A	SING2010_746	Singapore		SING	Ficus_apiocarpa_SING2010_746	This study	SRR24706298
<i>Ficus apollinaris</i> Dugand	OSYCEA	A Espinosa 725	Panama	1997	F	Ficus_apollinaris_Espinosa_725	This study	SRR24706287
<i>Ficus archboldiana</i> Summerh.	CONOSYC EA	G.D. Weiblen 1695	Papua New Guinea, Madang Province	2003	MIN	Ficus_cf_archboldiana_GD_Weiblen_1695	This study	SRR24706149
<i>Ficus asperifolia</i> Miq.	ASPERAE OREOSYC	N. Rønsted 217 McPherson,	Cameroon	2004	K	Ficus_asperifolia_N_Ronsted_217	This study	SRR24706276
<i>Ficus asperula</i> Bureau	EA	Gordon D. 19193	New Caledonia	2003	MO	Ficus_asperula_McPherson_19193	This study	SRR24706265
<i>Ficus assimilis</i> Baker	ALBIPILA E	Onjalalaina, Guy E. 25	Madagascar	2013	MO	Ficus_assimilis_Onjalalaina_25	This study	SRR24706179
<i>Ficus aurata</i> (Miq.) Miq.	ERIOSYCE A	EG 845	Borneo, Sarawak	2020	SAR, SING	Ficus_aurata_EG_845	This study	SRR24706168
<i>Ficus aurata</i> (Miq.) Miq.	ERIOSYCE A	EG 895	Borneo, Sarawak	2020	SAR, SING	Ficus_aurata_EG_895	This study	SRR24706211
<i>Ficus aurata</i> (Miq.) Miq.	ERIOSYCE A	Liao S. & al. 20190347	Borneo, Sabah	2019	SAN	Ficus_aurata_Liao_20190347	This study	SRR24706200
<i>Ficus aurea</i> Nutt.	AMERICA NAE	N. Rønsted 130	Cult. (BG) 89-538. No prov.	2003	K	Ficus_aurea_N_Ronsted_130	This study	SRR24706189
<i>Ficus aurea</i> Nutt.	AMERICA NAE	V0000018	Cult. (XTBG)		HITBC	Ficus_aurea_SRR13279559	10 NCBI BioProject PRJNA694366	SRR13279559
<i>Ficus auriculata</i> Lour.	SYCOMOR US	unknown	Kunming, China			Ficus_auriculata_SRR13570498		SRR13570498
<i>Ficus aurita</i> Blume	PALEOMO RPHE	Runi et al. S.62048	Borneo, Sarawak	1992	L.1605165	Ficus_aurita_L1605165	This study	SRR24706127
<i>Ficus austrina</i> Corner	ADENOSP ERMA	M. Køie & Sanderman Olsen 1765	New Guinea Cult. (Montgomery Botanical Center, MBC.4), Florida,	1962	C, 10503005	Ficus_austrina_Koie1765	This study	SRR24706126
<i>Ficus austrocaledonica</i> Bureau	OREOSYC EA	C. Baraloto 8080	USA		ICTB	Ficus_austrocaledonica_CB8080	This study	SRR24706125
<i>Ficus balete</i> Merr.	CONOSYC EA	Elmer 18266	Philippines, Luzon, Bataan	1917	F_735639	Ficus_balete_Elmer18266	This study	SRR24706124
<i>Ficus barba-jovis</i> Corner	SYNOECI A	Liao S. & al. 20190451	Borneo, Sabah	2019	SAN	Ficus_barba-jovis_Liao_20190451	This study	SRR24706123
<i>Ficus barteri</i> Sprague	GALOGLY CHIA	Walters, Gretchen Marie 668	Gabon	2001	MO	Ficus_barteri_Walters_668	This study	SRR24706122
<i>Ficus beccarii</i> King	SYCOCAR PUS	EG 871A	Borneo, Sarawak	2020	SAR, SING	Ficus_beccarii_EG_871A	This study	SRR24706121

<i>Ficus beccarii</i> King	SYCOCAR PUS	EG 889	Borneo, Sarawak	2020	SAR, SING	Ficus_beccarii_EG_889	This study	SRR24706119
<i>Ficus beccarii</i> King	SYCOCAR PUS	Liao S. & al. 20190385	Borneo, Sabah	2019	SAN	Ficus_beccarii_Liao_20190385	This study	SRR24706118
<i>Ficus benjamina</i> L.	CONOSYC EA	Othman et al. S.41467	Borneo, Sarawak	1979	L.1594269	Ficus_benjamina_L1594269	This study	SRR24706117
<i>Ficus benjamina</i> L.	CONOSYC EA	Niissalo SING2019_1181	Singapore	2019	SING	Ficus_benjamina_SING2019_1181	This study	SRR24706116
<i>Ficus boliviana</i> C.C.Berg	AMERICA NAE	Fuentes Claros, Alfredo Fernando 4335	Bolivia	2002	MO	Ficus_boliviana_Fuentes_4335	This study	SRR24706115
<i>Ficus botryocarpa</i> Miq.	SYCOCAR PUS	R.D. Harrison 616	Philippines, Palanan Forest Dynamics Plot, NE Luzon	2004	PUH/MIN	Ficus_botryocarpa_Harrison_616	This study	SRR24706114
<i>Ficus brachyclada</i> Baker	ASPERAE	Charles 3796	Madagascar	2007	MO	Ficus_brachyclada_Rakotovoao_3796	This study	SRR24706113
<i>Ficus brachypoda</i> (Miq.) Miq.	MALVANT HERA	D. Dixon and Kerrigan 1101	Australia, Northern Territory	2004	DNA	Ficus_brachypoda_Dixon_1101	This study	SRR24706112
<i>Ficus bracteata</i> (Miq.) Wall. ex Miq.	CONOSYC EA	Julaihi S.81273	Borneo, Sarawak Cult. (BG) 1989-522.	1999	L.1596389	Ficus_bracteata_L1596389	This study	SRR24706111
<i>Ficus broadwayi</i> Urb.	AMERICA NAE	N. Rønsted 121	Orig. acc. Utrecht Bot. Gard.	2003	K	Ficus_broadwayi_N_Rønsted_121	This study	SRR24706110
<i>Ficus bruneiensis</i> Corner	ERIOSYCE A	EG 879	Borneo, Sarawak	2020	SAR, SING	Ficus_bruneiensis_EG_879	This study	SRR24706108
<i>Ficus bruneiensis</i> Corner	ERIOSYCE A	EG 822	Borneo, Sarawak	2020	SAR, SING	Ficus_bruneiensis_EG_822	This study	SRR24706107
<i>Ficus brunneaurata</i> Corner	ERIOSYCE A	Ali et al. S.66721	Borneo, Sarawak	1993	L.1596025	Ficus_brunneaurata_L1596025	This study	SRR24706106
<i>Ficus brunneaurata</i> Corner	ERIOSYCE A	Liao S. & al. 20190373	Borneo, Sabah	2019	SAN	Ficus_brunneaurata_Liao_20190373	This study	SRR24706105
<i>Ficus aff. bukitrayaensis</i>	SYCOCAR PUS	EG 884	Borneo, Sarawak	2020	SAR, SING	Ficus_aff_bukitrayaensis_EG884	This study	SRR24706109
<i>Ficus aff. bukitrayaensis</i>	SYCOCAR PUS	Liao S. & al. 20190443	Borneo, Sabah	2019	SAN	Ficus_aff_bukitrayaensis_Liao_20190443	This study	SRR24706154
<i>Ficus caballina</i> Standl.	AMERICA NAE	N. Rønsted 101	Cult. (BG) 1992- 0922. Ecuador	2003	K	Ficus_caballina_N_Rønsted_101	This study	SRR24706104
<i>Ficus calimana</i> Dugand	AMERICA NAE	N. Rønsted 108	Cult. (BG) 1989-540 . No. prov. Philippines, Palanan	2003	K	Ficus_calimana_N_Rønsted_108	This study	SRR24706103
<i>Ficus callophylla</i> Blume	CONOSYC EA	R.D. Harrison 601	Forest Dynamics Plot, NE Luzon	2004	PUH/MIN	Ficus_callophylla_RD_Harrison_601	This study	SRR24706102
<i>Ficus callosa</i> Willd.	OREOSYC EA	N. Rønsted 109	Cult. (BG) 1999-561. Indonesia.		K	Ficus_callosa_N_Rønsted_109	This study	SRR24706157

													NCBI BioProject PRJNA389 699	
<i>Ficus carica</i> L.	CARICEAE	unknown	Cult. (Pisa, Italy)									Ficus_carica_SRR5678803		SRR5678803
<i>Ficus carica</i> L.	CARICEAE	V000017	Cult. (Kunming Institute of Botany)		HITBC							Ficus_carica_SRR13279566	10	SRR13279566
<i>Ficus carrii</i> Corner	SYNOECI A	20190370 SAN160640	Borneo, Sabah	2019	SAN							Ficus_carrii_Liao_20190370	This study	SRR24706156
<i>Ficus casapiensis</i> (Miq.) Miq.	AMERICA NAE	N. Rønsted 149 Liao S. & al. 20190477 or Liao S. & al. 20190418	Cult. (BG) 1998-0266. Orig. Peru, San Martin, Tarapoto-Yurimaguas.	2003	K							Ficus_casapiensis_N_Ronsted_149	This study	SRR24706155
<i>Ficus caulocarpa</i> (Miq.) Miq.	UROSTIG MA	R.D. Harrison 596	Borneo, Sabah Philippines, Palanan Forest Dynamics Plot, NE Luzon	2019	HSNU, SAN							Ficus_caulocarpa_Liao_20190477	This study	SRR24706153
<i>Ficus caulocarpa</i> (Miq.) Miq.	UROSTIG MA	R.D. Harrison 596	Borneo, Sarawak	2004	PUH/MIN							Ficus_caulocarpa_R_Harrison_596	This study	SRR24706152
<i>Ficus cereicarpa</i> Corner	SYCOCAR PUS	Ilias Paie S.41676	Borneo, Sarawak	1981	L.1600154							Ficus_cereicarpa_L1600154	This study	SRR24706151
<i>Ficus cereicarpa</i> Corner	SYCOCAR PUS	Othman et al. S.56433	Borneo, Sarawak	1988	L.1608918							Ficus_cereicarpa_L1608918	This study	SRR24706150
<i>Ficus chapaensis</i> Gagnep.	FRUTESCE NTIAE	N. Rønsted 301	Cult. (HITBC) s.n.	2006	HITBC							Ficus_chapaensis_N_Ronsted_301	This study	SRR24706139
<i>Ficus chartacea</i> (Wall. ex Kurz) Wall. ex King	ERIOSYCE A	B. Chanterasawan	Thailand	2005	No voucher information							Ficus_chartacea_Chanterasawan	This study	SRR24706138
<i>Ficus chartacea</i> (Wall. ex Kurz) Wall. ex King	ERIOSYCE A	Niissalo CTFS_G1_26058	Singapore		SING							Ficus_chartacea_CTF_S_G1_26058	This study	SRR24706137
<i>Ficus chartacea</i> (Wall. ex Kurz) Wall. ex King	ERIOSYCE A	EG 894	Borneo, Sarawak	2020	SAR, SING							Ficus_chartacea_EG_894	This study	SRR24706136
<i>Ficus citrifolia</i> Mill.	AMERICA NAE	N. Rønsted 104	Cult. (BG) 1993-1674. No prov.	2003	K							Ficus_subandina_N_Ronsted_104	This study	SRR24706284
<i>Ficus coerulescens</i> (Rusby) Rossberg	AMERICA NAE	C. Baraloto 8043	CF 36240		ICTB							Ficus_coerulescens_C8043	This study	SRR24706135
<i>Ficus colubrinae</i> Standl.	AMERICA NAE	Stevens, Warren Douglas 31913	Nicaragua	2011	MO							Ficus_colubrinae_Stevens_31913	This study	SRR24706134
<i>Ficus conocephalifolia</i> aff.	PHAEOPIL OSAE	McDonell & Ismail 3708	Indonesia, Papua, Sarini	1993	MO							Ficus_aff_conocephalifolia_McDonell_3708	This study	SRR24706143
<i>Ficus consociata</i> Blume	CONOSYC EA	Niissalo SING2019_1180	Singapore	2019	SING							Ficus_consociata_SING2019_1180	This study	SRR24706133
<i>Ficus copiosa</i> Steud.	PHAEOPIL OSAE	G.D. Weiblen D8	Papua New Guinea, Madang Province	1996	A							Ficus_copiosa_Weiblen_D8	This study	SRR24706131

<i>Ficus cordatula</i> Merr.	CONOSYC EA	Garcia et al. PPI 18439	Philippines	1995	L.1596217	Ficus_cordatula_L159 6217	This study	SRR24706130
<i>Ficus cordatula</i> Merr.	CONOSYC EA	RD Harrison 606	Philippines		PUH	Ficus_cordatula_RD_ Harrison_606	This study	SRR24706260
<i>Ficus costaricana</i> (Liebm.) Miq.	AMERICA NAE	C. Baraloto 8046	CF 36244		ICTB	Ficus_costaricana_CB 8046	This study	SRR24706258
<i>Ficus crassiramea</i> (Miq.) Miq.	CONOSYC EA	Lee Meng Hock S.40224	Borneo, Sarawak	1979	L.1596056	Ficus_crassiramea_L1 596056	This study	SRR24706257
<i>Ficus crassiuscula</i> Warb. ex Standl.	PHARMAC OSYCEA	M. Grayum 9097	Costa Rica	1988	MO	Ficus_crassiuscula_Gr ayum_9097	This study	SRR24706256
<i>Ficus</i> cf. <i>crecentioides</i> Bureau	OREOSYC EA	McPherson, Gordon D. 18134	New Caledonia	2001	MO	Ficus_cf_crecentioides _McPherson_18134	This study	SRR24706148
<i>Ficus crocata</i> (Miq.) Mart. ex Miq.	AMERICA NAE	Stevens, Warren Douglas 35898	Nicaragua	2015	MO	Ficus_crocata_Stevens _35898	This study	SRR24706255
<i>Ficus crocata</i> aff. (Miq.) Mart. ex Miq.	AMERICA NAE	H.Q. Li 2011437	Cult. (NTU) C1-347. No prov.	2011	HSNU	Ficus_aff_crocata_HS NU2011437	This study	SRR24706132
<i>Ficus cucurbitina</i> King	CONOSYC EA	Ilias Paie S.25730	Borneo, Sarawak	1967	L.1596709	Ficus_cucurbitina_L15 96709	This study	SRR24706254
<i>Ficus curtipes</i> Corner	CONOSYC EA	unknown	Kunming, China (Cult.?) Cult. (C) E1859-			Ficus_curtipes_SRR13 570496	NCBI BioProject PRJNA694 366	SRR13570496
<i>Ficus cyathistipula</i> Warb.	GALOGLY CHIA	N. Rønsted 80	0023. No prov.	2002	C	Ficus_cyathistipula_R onsted_80	This study	SRR24706253
<i>Ficus cyathistipula</i> Warb.	GALOGLY CHIA	Wang EEPAI 71	Cult. (XTBG)		HITBC	Ficus_cyathistipula_S RR13279558	10	SRR13279558
<i>Ficus cyathistipuloides</i> De Wild.	GALOGLY CHIA	N. Rønsted 136	Cult. (BG) 1988-239. Orig. acc. Utrecht Bot. Gard.	2003	K	Ficus_cyathistipuloide s_N_Ronsted_136	This study	SRR24706252
<i>Ficus cyrtophylla</i> (Miq.) Miq.	ASPERAE ADENOSP	V000006	Cult. (XTBG)		HITBC	Ficus_cyrtophylla_SR R13279557	10	SRR13279557
<i>Ficus dammaropsis</i> Diels	ERMA FRUTESCE	Regalado & Katik 1012	Papua New Guinea, Morobe	1994	F	Ficus_dammaropsis_R egalado_1012	This study	SRR24706250
<i>Ficus deltoidea</i> Jack	NTIAE FRUTESCE	E. Gardner 539a	Borneo, Sarawak	2017	SAR	Ficus_deltoidea_E_Ga rdner_539a	This study	SRR24706249
<i>Ficus deltoidea</i> Jack	NTIAE	EG 833	Borneo, Sarawak	2020	SAR, SING	Ficus_deltoidea_EG_8 33	This study	SRR24706248
<i>Ficus deltoidea</i> subsp. <i>motleyana</i> (Miq.) C.C.Berg	FRUTESCE NTIAE	S.P. Runi & P.C. Yii S.63044	Borneo, Sarawak	1991	L.1606437	Ficus_deltoidea_subsp _motleyana_L1606437	This study	SRR24706247
<i>Ficus densifolia</i> Miq.	MA GALOGLY	J. Fournel 117	Mauritius	2006	REU	Ficus_densifolia_Four nel_117	This study	SRR24706246
<i>Ficus densistipulata</i> De Wild.	CHIA	N. Rønsted 233	Cameroon	2004	K	Ficus_densistipulata_ N_Ronsted_233	This study	SRR24706245

<i>Ficus depressa</i> Blume	CONOSYC EA	Chai S.33249	Borneo, Sarawak	1973	L.1606755	<i>Ficus depressa</i> _L1606755	This study	SRR24706244
<i>Ficus destruens</i> F.Muell. ex C.T.White	MALVANT HERA	C. Baraloto 8089 I. Friis, Z. Wolde	Cult. (Montgomery Botanical Center, MBC.13), Florida, USA		ICTB	<i>Ficus destruens</i> _CB8089	This study	SRR24706243
<i>Ficus dicranostyla</i> Mildbr.	ALBIPILA E	& K. Vollesen 2501	Ethiopia	1982	C - C10011624	<i>Ficus dicranostyla</i> _Friis2501	This study	SRR24706242
<i>Ficus dinganensis</i> S.S.Chang	SYNOECI A	Zhen Zhang, DLP28	China, Hainan, Linshui, Mt. Diaoluo	2015	HSNU	<i>Ficus dinganensis</i> _DLP28	This study	SRR24706241
<i>Ficus drupacea</i> Thunb.	CONOSYC EA	N. Rønsted 114	Orig. acc Paradenya Bot. Gard.	2003	K	<i>Ficus drupacea</i> _N_Rønsted_114	This study	SRR24706424
<i>Ficus erecta</i> Thunb.	FRUTESCE NTIAE	unknown	Japan(?) Cult. (Montgomery Botanical Center MBC.11), Miami,		ICTB	<i>Ficus erecta</i> _DRR203152	11	DRR203152
<i>Ficus erecta</i> var. <i>beecheyana</i>	FRUTESCE NTIAE	C. Baraloto 8087 Randrianaivo,	Florida, USA. São Tomé and		ICTB	<i>Ficus erecta</i> _var_beecheyana_CB8087	This study	SRR24706423
<i>Ficus exasperata</i> Vahl	ASPERAE	Richard 1656 Liao S. & al.	Príncipe	2008	MO	<i>Ficus exasperata</i> _Randrianaivo_1656	This study	SRR24706422
<i>Ficus excavata</i> King	SYNOECI A	20190333 SAN160605	Borneo, Sabah Cult. (BG) 2000-1295. Orig.	2019	SAN	<i>Ficus excavata</i> _Liao_20190333	This study	SRR24706421
<i>Ficus eximia</i> Schott	AMERICA NAE	N. Rønsted 146	Campinas, Sao Paulo, Brazil. Philippines, Palanan	2003	K	<i>Ficus eximia</i> _N_Rønsted_146	This study	SRR24706420
<i>Ficus fiskei</i> Elmer	ASPERAE	R.D. Harrison 613	Forest Dynamics Plot, NE Luzon	2004	PUH/MIN	<i>Ficus fiskei</i> _RD_Harrison_613	This study	SRR24706419
<i>Ficus fistulosa</i> Reinw. ex Blume	SYCOCAR PUS	Niissalo CTFS_A2_20261	Singapore		SING	<i>Ficus fistulosa</i> _CTFS_A2_20261	This study	SRR24706418
<i>Ficus fistulosa</i> Reinw. ex Blume	SYCOCAR PUS	EG 900	Borneo, Sarawak Philippines, Palanan	2020	SAR, SING	<i>Ficus fistulosa</i> _EG_900	This study	SRR24706417
<i>Ficus fistulosa</i> Reinw. ex Blume	SYCOCAR PUS	R.D. Harrison 598	Forest Dynamics Plot, NE Luzon	2004	PUH/MIN	<i>Ficus fistulosa</i> _Harrison_598	This study	SRR24706416
<i>Ficus formosana</i> Maxim.	FRUTESCE NTIAE	unknown	Guangzhou, China			<i>Ficus formosana</i> _SRR13972883	12	SRR13972883
<i>Ficus forstenii</i> Miq.	CONOSYC EA	R.D. Harrison 632	Philippines	2004	PUH	<i>Ficus forstenii</i> _RD_Harrison_632	This study	SRR24706415
<i>Ficus francisci</i> H.J.P.Winkl.	SYCOCAR PUS	EG 874	Borneo, Sarawak			<i>Ficus francisci</i> _EG_874	This study	SRR24706413

<i>Ficus fulva</i> cf	ERIOSYCE A	Liao S. et al. 20190354 SAN160627	Borneo, Sabah Cult., Montgomery Botanical Center MBC.6	2019	SAN	<i>Ficus_cf_fulva_Liao_</i> 20190354	This study	SRR24706146
<i>Ficus fulva</i> cf.	ERIOSYCE A	C. Baraloto 8082			ICTB	<i>Ficus_cf_fulva_CB80</i> 82	This study	SRR24706147
<i>Ficus fulva</i> cf.	ERIOSYCE A	EG 859 C.F. van Beusekom et al.	Borneo, Sarawak	2020	SAR, SING	<i>Ficus_fulva_EG_859</i>	This study	SRR24706410
<i>Ficus fulva</i> Reinw. ex Blume	ERIOSYCE A	8789	Phrae, Thailand	1972	C, C10011625	<i>Ficus_fulva_C100116</i> 25	This study	SRR24706412
<i>Ficus fulva</i> Reinw. ex Blume	ERIOSYCE A	EG 810	Borneo, Sarawak	2020	SAR, SING	<i>Ficus_fulva_EG_810</i>	This study	SRR24706411
<i>Ficus fulva</i> Reinw. ex Blume	ERIOSYCE A	EG 885	Borneo, Sarawak	2020	SAR, SING	<i>Ficus_fulva_EG_885</i>	This study	SRR24706409
<i>Ficus gasparriniana</i> Miq.	FRUTESCE NTIAE CONOSYC	Xiao C240016	Cult. (XTBG)	2006	HITBC0021 807	<i>Ficus_gasparriniana_S</i> RR13279556	10	SRR13279556
<i>Ficus glaberrima</i> Blume	EA	N. Rønsted 295	Cult. (HITBC) s.n.	2006	HITBC	<i>Ficus_glaberrima_N_</i> Ronsted_295	This study	SRR24706408
<i>Ficus glandifera</i> Summerh.	MALVANT HERA	JRAS01480	Vanuatu	2000	HSNU	<i>Ficus_glandifera_JYR</i> _JRAS01480	This study	SRR24706407
<i>Ficus glandifera</i> Summerh.	MALVANT HERA	Corner NGF 12478	Papua New Guinea		L.1589601	<i>Ficus_glandifera_L15</i> 89601	This study	SRR24706406
<i>Ficus glandulifera</i> (Wall. ex Miq.) King	ERIOSYCE A	P. Chai S.33188	Borneo, Sarawak	1973	L.1607671	<i>Ficus_glandulifera_L1</i> 607671	This study	SRR24706405
<i>Ficus glandulifera</i> (Wall. ex Miq.) King	ERIOSYCE A	Niissalo SING2010_054	Singapore	2010	SING	<i>Ficus_glandulifera_SI</i> NG2010_054	This study	SRR24706404
<i>Ficus globosa</i> Blume	CONOSYC EA	EG 834	Borneo, Sarawak		SAR, SING	<i>Ficus_globosa_EG_83</i> 4	This study	SRR24706402
<i>Ficus gommelleira</i> Kunth & C.D.Bouché	AMERICA NAE	N. Rønsted 153	Cult. (BG) 2000- 0832. Brazil	2003	K	<i>Ficus_gommelleira_N</i> _Ronsted_153	This study	SRR24706401
<i>Ficus grandiflora</i> Corner	SYNOECI A	EG 826	Borneo, Sarawak	2020	SAR, SING	<i>Ficus_cf_grandiflora_</i> EG_826	This study	SRR24706145
<i>Ficus grossularioides</i> Burm.f.	ERIOSYCE A	EG 812	Borneo, Sarawak	2020	SAR, SING	<i>Ficus_grossularioides_</i> EG_812	This study	SRR24706400
<i>Ficus grossularioides</i> Burm.f.	ERIOSYCE A	EG 847	Borneo, Sarawak	2020	SAR, SING	<i>Ficus_grossularioides_</i> EG_847	This study	SRR24706399
<i>Ficus grossularioides</i> Burm.f.	ERIOSYCE A	Niissalo SING2019_406	Singapore	2019	SING	<i>Ficus_grossularioides_</i> SING2019_406	This study	SRR24706398
<i>Ficus guianensis</i> Desv.	AMERICA NAE	G. Weiblen GW1669	French Guiana	2002	MIN	<i>Ficus_guianensis_GW</i> 1669	This study	SRR24706397
<i>Ficus guizhouensis</i> X.S.Zhang	SYNOECI A	Zhen Zhang, Li- Fang Zhang, RJP19	China, Guizhou, Qiandongnan, Rongjiang	2015	HSNU	<i>Ficus_guizhouensis_R</i> JP19	This study	SRR24706396
<i>Ficus hemsleyana</i> King	PALEOMO RPHE	P. Chai et al. S.33215	Borneo, Sarawak	1973	L.1602112	<i>Ficus_hemsleyana_L1</i> 602112	This study	SRR24706395

<i>Ficus henryi</i> Warb. ex Diels	SINOSYCI DIUM	N. Rønsted 289	Cult. (HITBC) s.n.	2006	HITBC	Ficus_henryi_N_Ronsted_289	This study	SRR24706394
<i>Ficus hesperidiiformis</i> King	MALVANT HERA	G. Weiblen 2332	Papua New Guinea, Madang Province	2005	MIN	Ficus_hesperidiiformis_G_Weiblen_2332	This study NCBI BioProject PRJNA694366	SRR24706393
<i>Ficus heteromorpha</i> Hemsl.	FRUTESCE NTIAE	unknown	Kunming, China			Ficus_heteromorpha_SRR13570495		SRR13570495
<i>Ficus heterophylla</i> L.f.	ASPERAE PALEOMO	N. Rønsted 302 Mohtar & Yii S.66227	Cult. (HITBC) s.n.	2006	HITBC	Ficus_heterophylla_N_Ronsted_302	This study	SRR24706391
<i>Ficus heteropleura</i> Blume	RPHE PALEOMO	Niissalo	Borneo, Sarawak	1992	L.1602487	Ficus_heteropleura_L1602487	This study	SRR24706390
<i>Ficus heteropleura</i> Blume	RPHE	SING2020_799	Singapore	2020	SING	Ficus_heteropleura_SING2020_799	This study NCBI BioProject PRJNA277898	SRR24706389
<i>Ficus hirta</i> Vahl	ERIOSYCE A	unknown	China			Ficus_hirta_SRR1909654		SRR1909654
<i>Ficus hispida</i> L.f.	SYCOCAR PUS	Wang EEPAI 14 Zhen Zhang, Xiao-Mei Wang, Hai-Yan Gao, 20150833a	Cult. (XTBG)	2020	HITBC V000005	Ficus_hispida_SRR13279575	10	SRR13279575
<i>Ficus howii</i> Merr. & Chun	SYNOECI A	20150833a	China, Yunnan, Wenshan, Malipo	2015	HSNU PE	Ficus_howii_20150833a	This study	SRR24706388
<i>Ficus humbertii</i> C.C.Berg	MADAGA SCAR	A.B.Ware & al. 9 P. Phillipson & al. 3726	Madagascar	1992	01724670	Ficus_humbertii_Liu20180291	This study	SRR24706387
<i>Ficus humbertii</i> C.C.Berg	MADAGA SCAR	Liao S. et al. 20190413	Madagascar, Toliara	1990	MO	Ficus_humbertii_Phillipson_3726	This study	SRR24706386
<i>Ficus inaequipetiolata</i> Merr.	ERIOSYCE A	SAN160583 Liao S. et al.	Borneo, Sabah	2019	SAN	Ficus_inaequipetiolata_Liao_20190413	This study	SRR24706385
<i>Ficus inaequipetiolata</i> Merr.	ERIOSYCE A	SAN160587	Borneo, Sabah Cult. (USDA Subtropical Horticulture Research Station, CF 36265), Florida, USA	2019	SAN	Ficus_inaequipetiolata_Liao_20190417	This study	SRR24706384
<i>Ficus ingens</i> (Miq.) Miq.	UROSTIG MA	C. Baraloto 8051	Cult. (BG) 91-839.		ICTB	Ficus_ingens_CB8051	This study	SRR24706383
<i>Ficus ingens</i> (Miq.) Miq.	UROSTIG MA	N. Rønsted 106 Santamaria- Aguilar, Daniel Alberto 2914	No prov.	2003	K	Ficus_ingens_N_Ronsted_106	This study	SRR24706382
<i>Ficus insipida</i> Willd.	PHARMAC OSYCEA	Charoenphoi et al. 4149	Costa Rica	2005	MO C,	Ficus_insipida_SantamariaAguilar_2914	This study	SRR24706380
<i>Ficus ischnopoda</i> Miq.	FRUTESCE NTIAE		Yala, Thailand	1970	C10011626	Ficus_ischnopoda_C10011626	This study	SRR24706379

<i>Ficus kerkhovenii</i> Koord. & Valetton	CONOSYCEA	Niissalo SING2019_1357	Singapore	2019	SING	<i>Ficus_kerkhovenii</i> _SING2019_1357	This study	SRR24706378
<i>Ficus laevis</i> Blume	ERIOSYCEA	Niissalo SING2019_489	Singapore		SING	<i>Ficus_laevis</i> _SING2019_489	This study	SRR24706377
<i>Ficus lamponga</i> Miq.	ERIOSYCEA	Niissalo CTFS_I5_28831	Singapore		SING	<i>Ficus_lamponga</i> _CTFS_I5_28831	This study	SRR24706376
<i>Ficus lapathifolia</i> (Liebm.) Miq.	PHARMACOSYCEA	Gómez Chagala, Braulio 683	Mexico	2008	MO	<i>Ficus_lapathifolia</i> _Gomez_Chagala_683	This study	SRR24706375
<i>Ficus lapathifolia</i> (Liebm.) Miq.	PHARMACOSYCEA	Manriquez 3219 J. Fournel & C.	Mexico	1988	F	<i>Ficus_lapathifolia</i> _Manriquez_3219	This study	SRR24706374
<i>Ficus lateriflora</i> Vahl	ASPERAE	Michenaud JF130	Réunion Island Philippines, Palanan	2005	REU	<i>Ficus_lateriflora</i> _Michenaud_JF130	This study	SRR24706373
<i>Ficus lawesii</i> King	CONOSYCEA	R.D. Harrison 628	Forest Dynamics Plot, NE Luzon	2004	PUH/MIN	<i>Ficus_lawesii</i> _Harrison_628	This study	SRR24706372
<i>Ficus lepicarpa</i> Blume	SYCOCARPUS	EG 919	Borneo, Sarawak	2020	SAR, SING	<i>Ficus_lepicarpa</i> _EG_919	This study	SRR24706371
<i>Ficus lingua</i> Warb. ex De Wild. & T.Durand	GALOGLYCHIA	N. Rønsted 208	Cameroon	2004	K	<i>Ficus_lingua</i> _N_Ronsted_208	This study	SRR24706369
<i>Ficus lowii</i> King	CONOSYCEA	Lai Shak Teck S.69654	Borneo, Sarawak	1994	L.3927087	<i>Ficus_lowii</i> _L3927087	This study	SRR24706368
<i>Ficus luschnathiana</i> (Miq.) Miq.	AMERICANA	N. Rønsted 78	Cult. (C) S1947-0243. No prov.	2002	C	<i>Ficus_luschnathiana</i> _N_Ronsted_78	This study	SRR24706367
<i>Ficus lutea</i> Vahl	GALOGLYCHIA	C. Baraloto 8008	CF 5120		ICTB	<i>Ficus_lutea</i> _CB8008	This study NCBI BioProject PRJNA694366	SRR24706366
<i>Ficus lyrata</i> Warb.	GALOGLYCHIA	unknown	Kunming, China Cult. (Montgomery Botanical Center, MBC.16), Florida,		ICTB	<i>Ficus_lyrata</i> _SRR13570494		SRR13570494
<i>Ficus lyrata</i> Warb.	GALOGLYCHIA	C. Baraloto 8091	USA		ICTB	<i>Ficus_lyrata</i> _CB8091	This study	SRR24706365
<i>Ficus lyrata</i> Warb.	GALOGLYCHIA	S.Z. Xiong & al. 2011130	Cult. (China) No prov.	2011	HSNU	<i>Ficus_lyrata</i> _HSNU2011130	This study	SRR24706364
<i>Ficus macbridei</i> Standl.	PHARMACOSYCEA	Quisbert Quispe, Javier Martín 1244	Bolivia	2008	MO	<i>Ficus_macbridei</i> _Quisbert_1244	This study	SRR24706363
<i>Ficus macbridei</i> Standl.	PHARMACOSYCEA	Valenzuela Gamarra, Luis 8426	Peru	2007	MO	<i>Ficus_macbridei</i> _Valenzuela_8426	This study	SRR24706362
<i>Ficus macilenta</i> King	ERIOSYCEA	J.A.R. Anderson S.28620	Borneo, Sarawak	1969	L.1608816	<i>Ficus_macilenta</i> _L1608816	This study	SRR24706361

<i>Ficus maclellandii</i> King	CONOSYC EA	N. Rønsted 281	Cult. (HITBC) s.n.	2006	HITBC	Ficus_maclellandii_N _Ronsted_281	This study	SRR24706360
<i>Ficus macrophylla</i> Pers.	MALVANT HERA	C. Baraloto 8092	Cult. (Montgomery Botanical Center, MBC.17), Florida, USA		ICTB	Ficus_macrophylla_C B8092	This study	SRR24706358
<i>Ficus macrostyla</i> Corner	SYCOCAR PUS	A. Zainudin et al. 4528	Borneo, Sarawak	1993	L.1608811	Ficus_macrostyla_L16 08811	This study	SRR24706357
<i>Ficus macrostyla</i> Corner	SYCOCAR PUS	Liao 20190392 SAN160562	Borneo, Sabah Philippines, Palanan	2019	SAN	Ficus_macrostyla_Lia o20190392	This study	SRR24706356
<i>Ficus magnoliifolia</i> Blume	OREOSYC EA	R.D. Harrison 619 Liao S. et al. 20190340	Forest Dynamics Plot, NE Luzon	2004	PUH/MIN	Ficus_magnoliifolia_H arrison_619	This study	SRR24706355
<i>Ficus malayana</i> C.C.Berg & Chantaras.	SYCOCAR PUS	MANJAKAHERY, SAN160612	Borneo, Sabah	2019	SAN	Ficus_malayana_Liao _20190340	This study	SRR24706354
<i>Ficus marmorata</i> Bojer ex Baker	MADAGA SCAR	Manjakahery, Herisoa N. 406	Madagascar	2012	MO	Ficus_marmorata_Ma njakahery_406	This study	SRR24706353
<i>Ficus mauritiana</i> Lam.	SYCOMOR US	J. Fournel & C. Michenaud JF89	Réunion Island	2005	REU	Ficus_mauritiana_Fou rnelMichenaud_JF89	This study	SRR24706352
<i>Ficus maxima</i> Mill.	PHARMAC OSYCEA	Rønsted 156	Cult. (BG). Acc. unknown	2003	BG	Ficus_maxima_N_Ron sted_156	This study	SRR24706351
<i>Ficus maxima</i> Mill.	PHARMAC OSYCEA	Wang Gang EPAI 6	Cult in XTBG	2020	HITBC, V000009	Ficus_maxima_SRR13 279567	10	SRR13279567
<i>Ficus aff. megaleia</i>	SYCOCAR PUS	EG 881	Borneo, Sarawak	2020	SAR, SING	Ficus_aff_megaleia_E G881	This study	SRR24706251
<i>Ficus megaleia</i> Corner	SYCOCAR PUS	Liao S. & al. 20190379	Borneo, Sabah Philippines, Palanan	2019	SAN	Ficus_megaleia_Liao_ 20190379	This study	SRR24706350
<i>Ficus melinocarpa</i> Blume	ASPERAE	R.D. Harrison 625	Forest Dynamics Plot, NE Luzon	2004	PUH/MIN/K /LAE	Ficus_melinocarpa_R_ Harrison_625	This study	SRR24706349
<i>Ficus menabeensis</i> H.Perrier	CONOSYC EA	Manjakahery, Herisoa N. 405	Madagascar	2012	MO	Ficus_menabeensis_M anjakahery_405	This study	SRR24706347
<i>Ficus microcarpa</i> L.f.	CONOSYC EA	N. Rønsted 77	Cult. (C). P1979- 5041. No. prov.	2002	C	Ficus_microcarpa_Ro nsted_77	This study	SRR24706346
<i>Ficus microcarpa</i> L.f.	CONOSYC EA	Xiao and He C240081	Cult. (HITBC)	2009	HITBC	Ficus_microcarpa_SR R13279574	10	SRR13279574
<i>Ficus microdictya</i> Diels	ADENOSP ERMA	WG157	Papua New Guinea		HITBC	Ficus_microdictya_SR R13279564	10	SRR13279564
<i>Ficus midotis</i> Corner	PALEOMO RPHE	P. Chai S.36006	Borneo, Sarawak	1999	L.1609660	Ficus_midotis_L16096 60	This study	SRR24706345
<i>Ficus minahassae</i> (Teijsm. & Vriese) Miq.	SYCOCAR PUS	R.D. Harrison 614	Philippines, Palanan Forest Dynamics Plot, NE Luzon		C	Ficus_minahassae_C	This study	SRR24706344

<i>Ficus minahassae</i> (Teijsm. & Vriese) Miq.	SYCOCAR PUS	DD Soejarto & al 7529 K.M. Matthew, Carnatic Flora	Philippines, Luzon, Bataan	1991		Ficus_minahassae_Soe jarto_7529	This study	SRR24706240
<i>Ficus mollis</i> Vahl	CONOSYC EA	Project RHT 20451 Liao S. et al. 20190407	India, Dharmapuri	1978	L.1598511	Ficus_mollis_L159851 1	This study	SRR24706239
<i>Ficus montana</i> Burm.f.	ASPERAE	SAN160577	Borneo, Sabah	2019	SAN	Ficus_montana_Liao_ 20190407	This study	SRR24706238
<i>Ficus mucoso</i> Welw. ex Ficalho	SYCOMOR US	N. Rønsted 207	Cameroon	2004	K	Ficus_mucoso_N_Ron sted_207	This study	SRR24706237
<i>Ficus mutisii</i> Dugand	PHARMAC OSYCEA	Hoyos-Gómez, Saúl Ernesto 2396	Colombia	2013	MO	Ficus_mutisii_HoyosG omez_2396	This study	SRR24706236
<i>Ficus natalensis</i> Hochst.	GALOGLY CHIA	C. Baraloto 8095	TK24			Ficus_natalensis_CB8 095	This study	SRR24706235
<i>Ficus natalensis leprieurii</i> (Miq.) C.C. Berg	GALOGLY CHIA	H.Q. Li 2009392 D.D. Soejarto & N.M. Cuong 11525	Cult. (HITBC) s.n.	2009	HSNU	Ficus_natalensis_subs p_leprieurii_HSNU20 09392	This study	SRR24706233
<i>Ficus nervosa</i>	OREOSYC EA	Liao S. et al. 20190344	Vietnam	2000	L.1596143	Ficus_nervosa_L1596 143	This study	SRR24706232
<i>Ficus nervosa</i> subsp. <i>pubinervis</i> (Blume) C.C. Berg/ <i>Ficus</i>	OREOSYC EA	SAN160616 McPherson, Gordon D. 19246	Borneo, Sabah	2019	SAN	Ficus_nervosa_subsp_ pubinervis_Liao_2019 0344	This study	SRR24706231
<i>Ficus nitidifolia</i> Bureau	OREOSYC EA	Liao S. et al. 20190423	New Caledonia	2003	MO	Ficus_nitidifolia_McP herson_19246	This study	SRR24706230
<i>Ficus nota</i> (Blanco) Merr.	SYCOCAR PUS	SAN160593 Stevens, Warren Douglas 36194	Borneo, Sabah			Ficus_nota_Liao_2019 0423	This study	SRR24706229
<i>Ficus nymphaeifolia</i> Mill.	AMERICA NAE		Nicaragua	2015	MO C, C10503012	Ficus_nymphaeifolia_ Stevens_36194	This study	SRR24706228
<i>Ficus obliqua</i> G.Forst.	MALVANT HERA	L. Bernadi 12889	Vanuatu	1968		Ficus_obliqua_C1050 3012	This study	SRR24706227
<i>Ficus obscura</i> Blume	PALEOMO RPHE	R.D. Harrison 602	Philippines		PUH	Ficus_obscura_RD_H arrison_602	This study	SRR24706226
<i>Ficus obtusifolia</i> Kunth	AMERICA NAE	Stevens, Warren Douglas 33323	Nicaragua	2012	MO	Ficus_obtusifolia_Stev ens_33323	This study	SRR24706225
<i>Ficus oligodon</i> Miq.	SYCOMOR US	unknown	Yunnan, China			Ficus_oligodon_SRR1 5882886	NCBI BioProject PRJNA763 016	SRR15882886
<i>Ficus oligodon</i> Miq.	SYCOMOR US	Wang EEP AI 17	Cult. (XTBG)	2020	HITBC V000011	Ficus_oligodon_SRR1 3279562	10	SRR13279562

<i>Ficus orthoneura</i> H.Lév. & Vaniot	UROSTIG MA	X.M. Wang & J.H. Zhang 20190123 McPherson,	China	2019	HSNU	Ficus_orthoneura_HS NU20190123	This study	SRR24706224
<i>Ficus otophora</i> Corner & Guillaumin	OREOSYC EA	Gordon D. 18581A Antilahimena,	New Caledonia	2002	MO	Ficus_otophora_McPh erson_18581A Ficus_pachyclada_Ant ilahimena_6031	This study	SRR24706222
<i>Ficus pachyclada</i> Baker	ASPERAE	Patrice 6031	Madagascar	2008	MO C,	Ficus_palmata_Friis16 3	This study	SRR24706221
<i>Ficus palmata</i> Forssk. <i>Ficus paraensis</i> (Miq.) Miq.	CARICEAE AMERICA NAE	I. Friis 163 N. Rønsted 107 Liao S. et al. 20190441	Ethiopia Cult. (BG) 1989-527. No prov.	1970 2003	C10011606 K	Ficus_parietalis_Liao_ 20190441 Ficus_pertusa_N_Ron sted_135 Ficus_petiolaris_CB80 71 Ficus_petiolaris_CB80 72 Ficus_platypoda_N_R onsted_142 Ficus_politoria_O_Ma urin_74 Ficus_popenoei_Steve ns_28999	This study This study	SRR24706220 SRR24706219
<i>Ficus parietalis</i> Blume	PALEOMO RPHE AMERICA NAE	20190441 SAN160211 N. Rønsted 135	Borneo, Sabah Cult. (BG). 89.529	2019 2003	SAN K	Ficus_parietalis_Liao_ 20190441 Ficus_pertusa_N_Ron sted_135 Ficus_petiolaris_CB80 71 Ficus_petiolaris_CB80 72	This study This study	SRR24706218 SRR24706217
<i>Ficus pertusa</i> L.f.	AMERICA NAE	C. Baraloto 8071	FTBG 20070647A		ICTB	Ficus_petiolaris_CB80 71 Ficus_petiolaris_CB80 72	This study	SRR24706216
<i>Ficus petiolaris</i> Kunth <i>Ficus platypoda</i> (Miq.) A.Cunn. ex Miq.	AMERICA NAE MALVANT HERA	C. Baraloto 8072 N. Rønsted 142	FTBG 20070648A Cult. (BG), 93.220	2003	ICTB K	Ficus_platypoda_N_R onsted_142 Ficus_politoria_O_Ma urin_74 Ficus_popenoei_Steve ns_28999	This study This study	SRR24706215 SRR24706212
<i>Ficus politoria</i> Lam.	ASPERAE AMERICA NAE	O. Maurin 74 Stevens, Warren Douglas 28999	Madagascar Nicaragua Cult. (BG) 1992- 1123. Orig. acc.		K MO	Ficus_politoria_O_Ma urin_74 Ficus_popenoei_Steve ns_28999	This study This study	SRR24706341 SRR24706340
<i>Ficus preussii</i> Warb.	GALOGLY CHIA	N. Rønsted 138	Turku Bot. Gard. Philippines, Palanan	2003	K	Ficus_preussii_N_Ron sted_138	This study	SRR24706339
<i>Ficus pseudopalma</i> Blanco	ADENOSP ERMA	R.D. Harrison 610 Zhen Zhang, Jian- Hang Zhang, Jian- ZZ973	Forest Dynamics Plot, NE Luzon China, Xizang, Linzhi, Motuo	2004 2021	PUH/MIN HSNU	Ficus_pseudopalma_H arrison_610 Ficus_pubigera_ZZ97 3	This study This study This study	SRR24706338 SRR24706337 SRR24706337
<i>Ficus pumila</i> L.	SYNOECI A	unknown	China, Tiantong National Station of Forest Ecosystem Cult. (C) P1973- 5350. No prov.			Ficus_pumila_SRR63 33171 Ficus_pumila_Ronsted _91		NCBI BioProject PRJNA420 118 SRR6333171
<i>Ficus pumila</i> L.	SYNOECI A	N. Rønsted 91 M. C. Anstett and F. Kjellberg 1997-23		2002	C		This study	SRR24706336
<i>Ficus punctata</i> Thunb.	SYNOECI A		Brunei	1997	MPU	Ficus_punctata_Kjellb erg_199723	This study	SRR24706335

<i>Ficus pungens</i> Reinw. ex Blume	SYCOCAR PUS OREOSYC EA	W. Takeuchi 8767 McPherson, Gordon D. 18187	Papua New Guinea, Morobe	1993		<i>Ficus_pungens_Takeuchi_8767</i>	This study	SRR24706334
<i>Ficus racemigera</i> Bureau			New Caledonia	2001	MO	<i>Ficus_racemigera_McPherson_18187</i>	This study NCBI BioProject PRJNA252599	SRR24706333
<i>Ficus racemosa</i> L.	SYCOMOR US	unknown	Cult. (XTBG)			<i>Ficus_racemosa_SRR1405700</i>		SRR1405700
<i>Ficus recurva</i> Blume	SYNOECI A	Niissalo et al. SING2020-675	Singapore, Seletar	2020	SING	<i>Ficus_cf_recurva_Niissalo_SING2020-675</i>	This study	SRR24706144
<i>Ficus recurva</i> Blume	SYNOECI A	EG 839	Borneo, Sarawak	2020	SAR, SING	<i>Ficus_recurva_EG_839</i>	This study	SRR24706332
<i>Ficus recurva cf. recurva</i> var. <i>elegantior</i> Corner	SYNOECI A	EG 840	Borneo, Sarawak	2020	SAR, SING	<i>Ficus_recurva_EG_840</i>	This study	SRR24706330
	SYNOECI A	P. Chai et al. S.33194	Borneo, Sarawak	1973	L.1610326	<i>Ficus_recurva_var_elegantior_L1610326</i>	This study	SRR24706329
<i>Ficus reflexa</i> Thunb.	GALOGLY CHIA	O. Maurin 76	Madagascar	2004	K HITBC	<i>Ficus_reflexa_O_Maurin_76</i>	This study	SRR24706328
<i>Ficus religiosa</i> L.	UROSTIG MA	Wang EEPAI 62	Cult. (XTBG)	2020	V0000012	<i>Ficus religiosa_SRR13279560</i>	10	SRR13279560
<i>Ficus retusa</i> L.	CONOSYC EA	Koorders 9131	Indonesia, Java	s.d.	L.1620294	<i>Ficus_retusa_L1620294</i>	This study	SRR24706327
<i>Ficus rosulata</i> C.C.Berg	SYCOCAR PUS	J.A.R. Anderson S.28310	Borneo, Sarawak	1969	L.1616418	<i>Ficus_rosulata_L1616418</i>	This study	SRR24706326
<i>Ficus rosulata</i> C.C.Berg	SYCOCAR PUS	A. Zainudin et al. 4548	Borneo, Sarawak	1993	L.1620666	<i>Ficus_rosulata_L1620666</i>	This study	SRR24706325
<i>Ficus rosulata</i> C.C.Berg	SYCOCAR PUS	Niissalo et al. SING2019_300	Singapore	2019	SING	<i>Ficus_rosulata_SING2019_300</i>	This study	SRR24706324
<i>Ficus rubiginosa aff. rubiginosa</i> Desf. ex Vent.	MALVANT HERA	J.W. Adams JWA_601	Cult. (Hawaii) 1549. No prov.	2020	HSNU	<i>Ficus_aff_rubiginosa_HSNU_JWA_601</i>	This study	SRR24706425
<i>Ficus rubiginosa</i> Desf. ex Vent.	MALVANT HERA	N. Rønsted 89	Cult. (C). E1859-0014. No prov.	2002	C	<i>Ficus_rubiginosa_Rønsted_89</i>	This study	SRR24706323
<i>Ficus rubroscapitata</i> Corner	PALEOMO RPHE	EG530	Borneo, Sarawak Philippines, Palanan	2017	SAR, F	<i>Ficus_rubroscapitata_EG530</i>	This study	SRR24706322
<i>Ficus ruficaulis</i> Merr.	ERIOSYCE A	R.D. Harrison 626	Forest Dynamics Plot, NE Luzon	2004	PUH/MIN/K	<i>Ficus_ruficaulis_RD_Harrison_626</i>	This study	SRR24706321
<i>Ficus ruginervia</i> Corner	SYNOECI A	EG 846	Borneo, Sarawak	2020	SAR, SING	<i>Ficus_ruginervia_EG_846</i>	This study	SRR24706319
<i>Ficus rumphii</i> Blume	CONOSYC EA	N. Rønsted 74	Cult. (C). P1953-5105. No prov.	2002	C	<i>Ficus_rumphii_N_Rønsted_74</i>	This study	SRR24706318
<i>Ficus sagittata</i> Vahl	SYNOECI A	EG 850	Borneo, Sarawak	2020	SAR, SING	<i>Ficus_sagittata_EG_850</i>	This study	SRR24706317
<i>Ficus sagittata</i> Vahl	SYNOECI A	NT Hiep NTH 4247	Vietnam, Ninh Binh Prov.	2000	F	<i>Ficus_sagittata_Hiep_NTH4247</i>	This study	SRR24706316

<i>Ficus sagittata</i> Vahl	SYNOECI A	N. Rønsted 266	Cult. (HITBC) s.n.	2006	HITBC	<i>Ficus sagittata</i> _Ronsted_266	This study	SRR24706315
<i>Ficus sagittata</i> Vahl	SYNOECI A	Niissalo et al. SING2019_492	Singapore	2019		<i>Ficus sagittata</i> _SING2019_492	This study	SRR24706314
<i>Ficus sagittata</i> Vahl	SYNOECI A	Wang EEPAI 15	Cult. (XTBG)	2020	HITBC V000004	<i>Ficus sagittata</i> _SRR13279554	10	SRR13279554
<i>Ficus sagittifolia</i> Warb. ex Mildbr. & Burret	GALOGLY CHIA	M.W. Chase 19852			K	<i>Ficus sagittifolia</i> _ERR4009362	2	ERS4414205
<i>Ficus salicifolia</i> Vahl	UROSTIG MA	C. Baraloto 8053	Cult. (USDA Subtropical Horticulture Research Station, CF 36270), Florida, USA		ICTB	<i>Ficus salicifolia</i> _CB8053	This study	SRR24706313
<i>Ficus sansibarica</i> Warb.	GALOGLY CHIA	N. Rønsted 127 J.A.R. Anderson	Orig. acc. Utrecht Bot. Gard.	2003	K	<i>Ficus sansibarica</i> _N_Ronsted_127	This study	SRR24706312
<i>Ficus sarawakensis</i> Corner	SYNOECI A	& Ilias Paie S.28606	Borneo, Sarawak	1969	L 0040286	<i>Ficus sarawakensis</i> _L0040286	This study	SRR24706311
<i>Ficus sarmentosa</i> Buch.-Ham. ex Sm. var. <i>lachrymans</i>	SYNOECI A	Zhen Zhang, XEP10	China, Hubei, Xuanen, Enshi	2015	HSNU	<i>Ficus sarmentosa</i> _var_lachrymans_XEP10	This study	SRR24706310
<i>Ficus sarmentosa</i> Buch.-Ham. ex Sm. var. <i>sarmentosa</i>	SYNOECI A	Zhen Zhang, JLP5	China, Tibet, Rikaze, Nilamu	2017	HSNU	<i>Ficus sarmentosa</i> _var_sarmentosa_JLP5	This study	SRR24706308
<i>Ficus sarmentosa</i> Buch.-Ham. ex Sm. var. <i>thunbergii</i>	SYNOECI A	Zhi-Hui Su, Sasaki Ayako, OKP9	Japan, Ryukyu	2017	HSNU	<i>Ficus sarmentosa</i> _var_thunbergii_OKP9	This study	SRR24706307
<i>Ficus satterthwaitei</i>	SYCOCAR PUS	Liao S. et al. 20190360 SAN160632	Borneo, Sabah Philippines, Palanan			<i>Ficus satterthwaitei</i> _Liao_20190360	This study	SRR24706305
<i>Ficus satterthwaitei</i> Elmer	SYCOCAR PUS	R.D. Harrison 617	Forest Dynamics Plot, NE Luzon	2004	PUH	<i>Ficus satterthwaitei</i> _Harrison_617	This study	SRR24706306
<i>Ficus scaberrima</i> Blume	PALEOMO RPHE	Ilias Paie S.41706 Liao S. et al. 20190457 SAN160227	Borneo, Sarawak	1980	L.1615303	<i>Ficus pisifera</i> _L1615303	This study	SRR24706214
<i>Ficus scaberrima</i> Blume	PALEOMO RPHE		Borneo, Sabah Cult. (BG) 1988-293.	2019	SAN	<i>Ficus scaberrima</i> _Liao_20190457	This study	SRR24706304
<i>Ficus scassellatii</i> Pamp.	GALOGLY CHIA	N. Rønsted 110	Orig. acc. Utrecht Bot. Gard.	2003	K	<i>Ficus scassellatii</i> _N_Ronsted_110	This study	SRR24706303
<i>Ficus schumacheri</i> (Liebm.) Griseb.	AMERICA NAE	C. Baraloto 8100	CF 36278		ICTB	<i>Ficus schumacheri</i> _CB8100	This study	SRR24706302
<i>Ficus scortechinii</i> King	SYCOCAR PUS	Niissalo SING2019_807	Singapore	2019	SING	<i>Ficus scortechinii</i> _SING2019_807	This study	SRR24706301

<i>Ficus scratchleyana</i> King	SYNOECI A	R. Johns PP10456	Indonesia, Papua Cult. (BG) 1989-523.		K	Ficus_scratchleyana_J ohns_PP10456	This study	SRR24706300
<i>Ficus cf. segoviae</i>	PHARMAC OSYCEA	N. Rønsted 119	No prov.	2003	K	Ficus_cf_segoviae_N_ Ronsted_119	This study	SRR24706142
<i>Ficus segoviae</i> Miq.	PHARMAC OSYCEA	Morales Quirós, Juan Francisco 2472	Costa Rica	1994	MO	Ficus_segoviae_Moral es_2472	This study	SRR24706299
<i>Ficus semicordata</i> Buch.- Ham. ex Sm.	HEMICAR DIA	B. Chanterasuwan s.n.	Thailand	2005	No voucher information	Ficus_semicordata_Ch anterasuwana_sn	This study NCBI BioProject PRJDB181 1	SRR24706297 DRR031427
<i>Ficus septica</i> Burm.f.	SYCOCAR PUS	unknown	Okinawa, Japan Philippines, Palanan			Ficus_septica_DRR03 1427		DRR031427
<i>Ficus septica</i> Burm.f.	SYCOCAR PUS	R.D. Harrison 618 Liao S. et al. 20190332	Forest Dynamics Plot, NE Luzon	2004	PUH/MIN	Ficus_septica_C	This study	SRR24706296
<i>Ficus sinuata</i> Thunb.	PALEOMO RPHE	SAN160604	Borneo, Sabah	2019	SAN	Ficus_sinuata_Liao_2 0190332	This study	SRR24706295
<i>Ficus sp.</i>	OREOSYC EA	E. Gardner 526	Borneo, Sarawak	2017	SAR, F	Ficus_sp_E_Gardner_ 526	This study	SRR24706294
<i>Ficus sp.</i>	PHARMAC OSYCEA	Weiblen 1674	French Guiana	2002	MIN	Ficus_sp>Weiblen167 4	This study	SRR24706293
<i>Ficus sp.</i>	PHARMAC OSYCEA	Wang Gang EPAI 7	Brazil		HITBC, V000013	Ficus_sp_SRR132795 68	10	SRR13279568
<i>Ficus spiralis</i> Corner	SYNOECI A	Othman S.41470	Borneo, Sarawak	1979	L.1616561	Ficus_spiralis_L16165 61	This study	SRR24706292
<i>Ficus squamosa</i> Roxb.	SYCOCAR PUS	unknown	Yunnan, China			Ficus_squamosa_SRR 15882953	13	SRR15882953
<i>Ficus sterrocarpa</i> Diels	MALVANT HERA	G.D. Weiblen 1126	Papua New Guinea, Sepik Province	2000	MIN	Ficus_sterocarpa_G_ Weiblen_1126	This study	SRR24706291
<i>Ficus stolonifera</i> King	SYCOCAR PUS	EG 823	Borneo, Sarawak	2020	SAR, SING	Ficus_stolonifera_EG_ 823	This study	SRR24706290
<i>Ficus stolonifera</i> King	SYCOCAR PUS	EG 842	Borneo, Sarawak	2020	SAR, SING	Ficus_stolonifera_EG_ 842	This study	SRR24706289
<i>Ficus stolonifera</i> King	SYCOCAR PUS	EG 906 Liao S. et al. 20190384	Borneo, Sarawak	2020	SAR, SING	Ficus_stolonifera_EG_ 906	This study	SRR24706288
<i>Ficus stolonifera</i> King	SYCOCAR PUS	SAN160553	Borneo, Sabah	2019	SAN	Ficus_stolonifera_Liao _20190384	This study	SRR24706286
<i>Ficus stuhlmannii</i> Warb.	GALOGLY CHIA	C. Baraloto 8057	Cult. (USDA Subtropical Horticulture Research Station, CF 36281), Florida, USA		ICTB	Ficus_stuhlmannii_CB8 057	This study	SRR24706285
<i>Ficus subcordata</i> Blume	CONOSYC EA	C. Baraloto 8098	Cult. (The Kampong), Miami, Florida, USA (TK27)		ICTB	Ficus_subcordata_CB 8098	This study	SRR24706283

<i>Ficus subcordata</i> Blume	CONOSYC EA	D.D. Soejarto et al. 6417	Philippines, Palawan	1989	F, F2031894	Ficus_subcordata_F2031894	This study	SRR24706282
<i>Ficus subcordata</i> Blume	CONOSYC EA	Anderson S.28380	Borneo, Sarawak	1969	L.1616807	Ficus_subcordata_L1616807	This study	SRR24706281
<i>Ficus subulata</i> Blume	PALEOMO RPHE	EG 876	Borneo, Sarawak	2020	SAR, SING	Ficus_subulata_EG_876	This study	SRR24706280
<i>Ficus subulata</i> Blume	PALEOMO RPHE	N. Rønsted 299	Cult. (HITBC) s.n.	2006	HITBC	Ficus_subulata_N_Rønsted_299	This study	SRR24706279
<i>Ficus subulata</i> Blume	PALEOMO RPHE	Niissalo et al. 259	Singapore	2020	SING	Ficus_subulata_SING_259	This study	SRR24706278
<i>Ficus sundaica</i> Blume	CONOSYC EA	Lee Meng Hock S.40604	Borneo, Sarawak	1979	L.1612213	Ficus_sundaica_L1612213	This study	SRR24706277
<i>Ficus sur</i> Forssk.	SYCOMOR US	N. Rønsted 76 Liao S. et al. 20190342	No prov.	2002	C	Ficus_sur_Rønsted_76	This study	SRR24706275
<i>Ficus tarennifolia</i> Corner	SYCOCAR PUS	SAN160614	Borneo, Sabah Cult. (BG) 1988-281.	2019	SAN	Ficus_tarennifolia_Liao_20190342	This study	SRR24706274
<i>Ficus tessellata</i> Warb.	GALOGLY CHIA	N. Rønsted 143	Orig. acc. Utrecht Bot. Gard.	2003	K	Ficus_tesselata_N_Rønsted_143	This study	SRR24706273
<i>Ficus thonningii</i> Blume	GALOGLY CHIA	N. Rønsted 231	Cameroon	2004	K	Ficus_thonningii_N_Rønsted_231	This study NCBI BioProject PRJNA432314	SRR24706272 SRR6663248
<i>Ficus tikoua</i> Bureau	SYCOMOR US	unknown	Guiyang, China			Ficus_tikoua_SRR6663248		
<i>Ficus tiliifolia</i> Baker	SYCOMOR US	O. Maurin 87	Madagascar	2004	K	Ficus_tiliifolia_Maurin_87	This study	SRR24706271
<i>Ficus tinctoria</i> G.Forst.	PALEOMO RPHE	N. Rønsted 99	Cult. (BG) 1989.551. No prov.	2003	K	Ficus_tinctoria_Rønsted_99	This study	SRR24706270
<i>Ficus tinctoria</i> subsp. <i>gibbosa</i> (Bl.) Corner	PALEOMO RPHE	J.A.R. Anderson S.28305	Borneo, Sarawak	1969	L.1621403	Ficus_tinctoria_subsp_gibbosa_L1621403	This study	SRR24706269
<i>Ficus tonduzii</i> Standl.	PHARMAC OSYCEA	Monteagudo 14187	Peru	2007	F	Ficus_tonduzii_Monteagudo_14187	This study	SRR24706268
<i>Ficus torrentium</i> H.Perrier	SYCOMOR US	Rakotonirina, Casmir Zoly 97	Madagascar	2013	MO	Ficus_torrentium_Rakotonirina_97	This study	SRR24706267
<i>Ficus torresiana</i> Standl.	PHARMAC OSYCEA	Estonda 2258	Costa Rica	1995	F	Ficus_torresiana_Estonda_2258	This study	SRR24706266
<i>Ficus treubii</i> King	SYCOCAR PUS	EG 856	Borneo, Sarawak	2020	SAR, SING	Ficus_cf_treubii_EG856	This study	SRR24706141
<i>Ficus treubii</i> King	SYCOCAR PUS	J.A.R. Anderson S.28750	Borneo, Sarawak	1969	L.1613164	Ficus_treubii_L1613164	This study	SRR24706264
<i>Ficus trichocarpa</i> Blume	SYNOECI A	R.D. Harrison 624	Philippines, Palanan Forest Dynamics Plot, NE Luzon	2004	PUH/MIN/K/LAE	Ficus_trichocarpa_Harrison_624	This study	SRR24706263

<i>Ficus trichocarpa</i> cf.	SYNOECI A	R.D. Harrison 600	Philippines, Palanan Forest Dynamics Plot, NE Luzon	2004	PUH/MIN/K /LAE	Ficus_cf_trichocarpa_ Harrison_600	This study	SRR24706140
<i>Ficus trichopoda</i> Baker	GALOGLY CHIA	N. Rønsted 118	Cult. (BG) 1988-267. No prov.	2003	K	Ficus_trichopoda_N_ Ronsted_118	This study	SRR24706262
<i>Ficus triloba</i> Buch.-Ham. ex Voigt	ERIOSYCE A	Wang EEPAI 16	Cult. (XTBG)	2020	HITBC V000003	Ficus_triloba_SRR132 79555	10	SRR13279555
<i>Ficus tsiangii</i> Corner	SINOSYCI DIUM	N. Rønsted 298	Cult. (HITBC) s.n.	2006	HITBC	Ficus_tsiangii_Ronste d_298	This study	SRR24706261
<i>Ficus uncinata</i> (King) Becc.	SYCOCAR PUS	EG 837	Borneo, Sarawak	2020	SAR, SING	Ficus_uncinata_EG_8 37	This study	SRR24706259
<i>Ficus uncinata</i> (King) Becc.	SYCOCAR PUS	EG 880	Borneo, Sarawak	2020	SAR, SING	Ficus_uncinata_EG_8 80	This study	SRR24706184
<i>Ficus uncinata</i> aff	SYCOCAR PUS	EG 891 Liao S. et al. 20190356	Borneo, Sarawak	2020	SAR, SING	Ficus_aff_uncinata_E G_891	This study	SRR24706414
<i>Ficus uniglandulosa</i> Wall.	PALEOMO RPHE	SAN160628	Borneo, Sabah	2019	SAN	Ficus_uniglandulosa_ Liao_20190356	This study	SRR24706183
<i>Ficus urnigera</i> Miq.	SYNOECI A	Lei et al. S.64082	Borneo, Sarawak	1991	L.1617759	Ficus_urnigera_L1617 759	This study	SRR24706182
<i>Ficus vaccinioides</i> Hemsl. & King	FRUTESCE NTIAE	C. Baraloto 8068	F03		ICTB	Ficus_vaccinioides_C B8068	This study	SRR24706181
<i>Ficus variegata</i> Blume	SYCOMOR US	EG 870	Borneo, Sarawak	2020	SAR, SING	Ficus_variegata_EG_8 70	This study	SRR24706180
<i>Ficus variegata</i> Blume	SYCOMOR US	EG 873	Borneo, Sarawak	2020	SAR, SING	Ficus_variegata_EG_8 73	This study	SRR24706178
<i>Ficus variegata</i> Blume	SYCOMOR US	EG 901 Jongkind, Carel Christiaan Hugo 11646	Borneo, Sarawak	2020	SAR, SING	Ficus_variegata_EG_9 01	This study	SRR24706177
<i>Ficus variifolia</i> Warb.	ALBIPILA E	Niissalo CTFS_L5_04509	Guinea Singapore, Bukit Timah Nature Reserve	2012	MO	Ficus_variifolia_Jongk ind_11646	This study	SRR24706176
<i>Ficus vasculosa</i> Wall. ex Miq.	OREOSYC EA	Wen C500013	Cult. (XTBG)	2011	SING HITBC0021 849	Ficus_vasculosa_CTF S_L5_04509	This study	SRR24706175
<i>Ficus vasculosa</i> Wall. ex Miq.	OREOSYC EA	Stevens, Warren Douglas 36499	Nicaragua	2015	MO	Ficus_vasculosa_SRR 13279553	10	SRR13279553
<i>Ficus velutina</i> Humb. & Bonpl. ex Willd.	AMERICA NAE	N. Rønsted 115	Cult. (BG) 1990- 1239. South Africa.	2003	MO	Ficus_velutina_Steven s_36499	This study	SRR24706174
<i>Ficus verruculosa</i> Warb.	UROSTIG MA	N. Rønsted 115	Cult. (BG) 1990- 1239. South Africa.	2003	K	Ficus_verruculosa_NR onsted_115	This study	SRR24706173
<i>Ficus villosa</i> Blume	SYNOECI A	EG 832 Niissalo et al. SING2019_267	Borneo, Sarawak	2020	SAR, SING	Ficus_villosa_EG_832 832	This study	SRR24706172
<i>Ficus villosa</i> Blume	SYNOECI A	SING2019_267	Singapore	2019	SING	Ficus_villosa_SING20 19_267	This study	SRR24706171

								NCBI BioProject PRJNA694 366	
<i>Ficus virens</i> Aiton	UROSTIG MA	unknown	Kunming, China					Ficus_virens_SRR135 70492	SRR13570492
<i>Ficus virens</i> Aiton	UROSTIG MA	G.D. Weiblen 555	Papua New Guinea, Pandang Province	1995	A/LAE/CRI			Ficus_virens_G_Weibl en_555	This study SRR24706170
<i>Ficus virgata</i> Reinw. ex Blume	PALEOMO RPHE	N. Rønsted 65	Cult. (BG) P1986- 5148.	2002	C			Ficus_virgata_N_Rons ted_65	This study SRR24706169
<i>Ficus vogeliana</i> (Miq.) Miq.	SYCOMOR US	N. Rønsted 214	Cameroon	2004	K			Ficus_vogeliana_N_R onsted_214	This study SRR24706167
<i>Ficus wassa</i> Roxb.	PHAEOPIL OSAE	T. Utteridge	Indonesia, Papua					Ficus_wassa_T_Utter idge	This study SRR24706166
<i>Ficus watkinsiana</i> F.M.Bailey	MALVANT HERA	C. Baraloto 8012	CF 3534					Ficus_watkinsiana_CB 8012	This study SRR24706165
<i>Ficus watkinsiana</i> F.M.Bailey	MALVANT HERA	B. Rodriguez PI 78600	Cult. (USDA-ARS) MIA 3534. Australia	2021	HSNU			Ficus_watkinsiana_HS NU_PI78600	This study SRR24706164
<i>Ficus webbia</i> (Miq.) Miq.	OREOSYC EA	McPherson, Gordon D. 18179	New Caledonia	2001	MO			Ficus_webbiana_McP herson_18179	This study SRR24706163
<i>Ficus xylophylla</i> (Miq.) Wall. ex Miq.	CONOSYC EA	Niissalo et al. SING2019_828	Singapore Papua New Guinea, Utai, Sandaun Province	2019	SING			Ficus_xylophylla_SIN G2019_828	This study SRR24706162
<i>Ficus xylosyca</i> Diels	MALVANT HERA	G.D. Weiblen 2047	Utai, Sandaun Province	2003	MIN			Ficus_xylosyca_Weib len_2047	This study SRR24706161
<i>Ficus yoponensis</i> Desv.	PHARMAC OSYCEA	Stevens, Warren Douglas 37406 J. Korning and K. Thomsen 47824	Nicaragua Napo, Ecuador	2016	MO C, C10011604			Ficus_yoponensis_Ste vens_37406 Helicostylis_tomentos a_C10011604	This study SRR24706160 this study SRR24706159
<i>Helicostylis tomentosa</i> <i>Helicostylis towarensis</i> (Klotzsch & H.Karst.) C.C. Berg	Olmedieae Olmedieae	Chapi Siñani, Neftali 63	Bolivia	2006	MO			Helicostylis_tovarensi s_Chapi_63 Helicostylis_turbinata _F_1247063	this study SRR24706158 this study SRR24706210
<i>Helicostylis turbinata</i>	Olmedieae	Fróes 21444	Brazil	1945	F 1247063				
<i>Hullettia dumosa</i> King	Parartocarp eae	N. Zerega & al. 242	Malaysia (Peninsula)	2002	CHIC			Hullettia_dumosa	7 SRR12283106
<i>Hullettia griffithiana</i> (Kurz) Hook.f.	Parartocarp eae	Kerr 16866	Thailand	1929	US			Hullettia_griffithiana	7 SRR12282908
<i>Leucosyke capitellata</i> (Poir.) Wedd.	Outgroup: Urticaceae	Lugas 41		1995	K			Leucosyke_capitellata	2 ERS4414208
<i>Maclura africana</i> (Bureau) Corner	Chlorophor eae	Greenway & Kanuri 15269	Tanzania					Maclura_africana	2 SRR12282990
<i>Maclura amboinensis</i> Blume	Chlorophor eae	Takeuchi 16378	Papua New Guinea	2002	US			Maclura_amboinensis	2 SRR12282979
<i>Maclura andamanica</i> (Hook.f.) Corner	Chlorophor eae	Maxwell 89-436	Thailand	1989	L			Maclura_andamanica	2 SRR12282968

<i>Maclura cochinchinensis</i> (Lour.) Corner	Chlorophorae	Sino-American Guizhou Botanical Expedition 887	China Guizhou		NY	<i>Maclura_cochinchinensis</i>	2	SRR12282958
<i>Maclura fruticosa</i> (Roxb.) Corner	Chlorophorae	Cuong & al. 1193	Vietnam		F	<i>Maclura_fruticosa</i>	2	SRR12282957
<i>Maclura pomifera</i> (Raf.) C.K.Schneid.	Chlorophorae	Gardner 139	USA (Illinois)	2014	CHIC	<i>Maclura_pomifera</i>	4	SRR3907028
<i>Maclura sp.</i>	Chlorophorae	Averyanov & al CBL1198	Vietnam	1998	MO	<i>Maclura_pubescens</i>	2	SRR12283001
<i>Maclura spinosa</i> (Willd.) C.C.Berg	Chlorophorae	Perumal RHT 22554	India		L	<i>Maclura_spinosa</i>	2	SRR12282955
<i>Maclura tinctoria</i> (L.) D.Don ex Steud subsp. <i>tinctoria</i>	Chlorophorae	Campos & Diaz 2679	<i>Maclura_tinctoria_subsp_tinctoria</i>		F Peru		2	SRR12282951
<i>Maclura tinctoria</i> subsp. <i>mora</i> (Griseb.) Vázq.Avila	Chlorophorae	Nee 40044	Bolivia		NY	<i>Maclura_tinctoria_subsp_mora</i>	2	SRR12282952
<i>Maclura tricuspidata</i> Carrière	Chlorophorae	Gardner MOR 68-7917	USA (Illinois)	2018	MOR K (K000618265)	<i>Maclura_tricuspidata</i>	2	SRR12282950
<i>Maillardia borbonica</i> Duch.	Moreae	Cadet 4518	Réunion	1973	5)	<i>Maillardia_borbonica</i>	2	ERS4414217
<i>Maillardia montana</i> Leandri	Moreae	Andrianantoanina 1023	Madagascar	1996	F	<i>Maillardia_montana</i>	2	SRR12283024
<i>Malaisia scandens</i> (Lour.) Planch.	Dorstenieae	Gardner & al. 122	Borneo	2013	F, SAN	<i>Malaisia_scandens</i>	2	SRR12283025
<i>Malcura brasiliensis</i> Endl.	Chlorophorae	Nee & Vargas 45025	Bolivia		NY	<i>Maclura_brasiliensis</i>	2	SRR12282959
<i>Malcura thorellii</i> (Gagnep.) Corner	Chlorophorae	Pierre 4709	Cambodia	1870	NY	<i>Maclura_thorellii</i>	2	SRR12282954
<i>Maquira coriacea</i> (H.Karst.) C.C. Berg	Olmedieae	Altamirano Azurduy, Saúl 3387	Bolivia	2006	MO	<i>Maquira_coriacea_Altamirano_3387</i>	this study	SRR24706209
<i>Maquira guianensis</i>	Olmedieae	Perez et al. 4216	Ecuador	2009	F 2302650	<i>Maquira_guianensis_F_2302650</i>	this study	SRR24706208
<i>Maquira guianensis</i> subsp. <i>costaricana</i>	Olmedieae	F 2251117			F 2251117	<i>Maquira_guianensis_subsp_costaricana_F_2251117</i>	this study	SRR24706207
<i>Maquira sclerophylla</i> (Ducke) C.C. Berg	Olmedieae	Sabatier, Daniel R. L. 5326	French Guiana	2007	MO	<i>Maquira_sclerophylla_Sabatier_5326</i>	this study	SRR24706206
<i>Mesogyne insignis</i>	Olmedieae	M.A. Mwangoka 161			MO	<i>Mesogyne_insignis</i>	1	
<i>Milicia excelsa</i> (Welw.) C.C.Berg	Moreae	McPherson 16087	Gabon	1993	US	<i>Milicia_excelsa</i>	7	SRR12283108

<i>Milicia regia</i> (A.Chev.) C.C.Berg	Moreae	Cooper 332 Gardner MOR	Liberia USA Illinois		F	<i>Milicia_regia</i>	2	SRR12282949
<i>Morus alba</i> L.	Moreae	920-26*1 Gardner MOR	cultivated USA Illinois	2018	MOR	<i>Morus_alba</i>	2	SRR12282946
<i>Morus australis</i> Poir.	Moreae	241-71*6	cultivated	2018	MOR China	<i>Morus_australis</i>	2	SRR12282942
<i>Morus sp.</i>	Moreae	Nie Min-xiang 92144		MOR	Jiangxi	<i>Morus_cathayana</i>	2	SRR12282939
<i>Morus celtidifolia</i> Kunth	Moreae	Sandoval & Gutierrez 637		MO	Mexico	<i>Morus_celtidifolia</i>	2	SRR12282937
<i>Morus sp.</i>	Moreae	AA20187-A	USA cult from Algeria		F	<i>Morus_kagayamai</i>	2	SRR12282931
<i>Morus macroua</i> Miq.	Moreae	Gardner 28	USA Florida	2013	CHIC	<i>Morus_macroua</i>	2	SRR12282930
<i>Morus microphylla</i> Buckley	Moreae	Stone & al. 4225 Gardner MOR	USA Texas USA Illinois	2004	MO	<i>Morus_microphylla</i>	2	SRR12282926
<i>Morus sp.</i>	Moreae	55-95*1	cultivated USA Florida	2018	MOR	<i>Morus_mongolica</i>	2	SRR12282925
<i>Morus sp.</i>	Moreae	Gardner 29	cultivated	2013	CHIC	<i>Morus_nigra</i>	2 NCBI BioProject PRJNA503	SRR12282924
<i>Morus notabilis</i> C.K.Schneid.	Moreae	unknown	China			<i>Morus_notabilis</i>	114	SRR8138828
<i>Morus rubra</i> L.	Moreae	Gardner 141	USA Florida	2015	CHIC	<i>Morus_rubra</i>	2	SRR12282922
<i>Morus serrata</i> Roxb.	Moreae	Koelz 4788	India		F	<i>Morus_serrata</i>	2	SRR12282920
<i>Myriocarpa obovata</i>	Outgroup: Urticaceae	Monro, A.K. 6534 Prance & al.			K	<i>Myriocarpa_obovata</i>	14	ERR5033890
<i>Naucleopsis caloneura</i>	Olmedieae	P25386 Haber &	Brazil	1977	F 2143090	<i>Naucleopsis_caloneura</i> _F_2143090	this study	SRR24706205
<i>Naucleopsis capirensis</i>	Olmedieae	Zuchowski 11845 Quizhpe & al.	Costa Rica	1994	F 2312425	<i>Naucleopsis_capirensis</i> _F_2312425	this study	SRR24706204
<i>Naucleopsis francisci</i>	Olmedieae	740 Graham & Schunke Vigo	Ecuador	2005	F 2311189	<i>Naucleopsis_francisci</i> _F_2311189	this study	SRR24706203
<i>Naucleopsis glabra</i>	Olmedieae	780 Aguilar & Castro	Peru	2000	F 2312782	<i>Naucleopsis_glabra</i> _F_2312782	this study	SRR24706202
<i>Naucleopsis krukovii</i>	Olmedieae	703	Peru	2002	F 2285867 K	<i>Naucleopsis_krukovii</i> _F_2285867	this study	SRR24706201
<i>Naucleopsis macrophylla</i> Miq.	Olmedieae	Berg & al. 18534 Hammel &	Brazil	1973	(K00094683 2)	<i>Naucleopsis_macrophylla</i> _Berg18534	2	ERS4414215
<i>Naucleopsis naga</i>	Olmedieae	Trainer 12923	Costa Rica	1982	F 2047822	<i>Naucleopsis_naga</i> _F_2047822	this study	SRR24706199

<i>Naucleopsis pseudonaga</i>	Olmedieae	Graham & Schunke Vigo 1026	Peru	2000	F 2312795	Naucleopsis_pseudonaga_F_2312795	this study	SRR24706198
<i>Naucleopsis ternstroemiiflora</i>	Olmedieae	Berg & al. P18467	Brazil	1973	F 1826476	Naucleopsis_ternstroemiiflora_F_1826476	this study	SRR24706197
<i>Naucleopsis ulei subsp amara</i>	Olmedieae	Graham 2411	Peru	2003	F 2312797	Naucleopsis_ulei_subsp_amara_F_2312797	this study	SRR24706196
<i>Noyera mollis</i>	Olmedieae	Ledezma 963	Bolivia	2006	F	Noyera_mollis_Ledezma_963_F	this study	SRR24706191
<i>Noyera rubra</i>	Olmedieae	Silva 2935	Brazil	1970	F	Noyera_rubra_Silva_2935_F	this study	SRR24706190
<i>Olmedia aspera</i> Ruiz & Pav.	Olmedieae	Fuentes & al. 5323	Bolivia	2002	MO	Olmedia_aspera	2	SRR12282905
<i>Oreocnide trinervis</i>	Outgroup: Urticaceae	Andau, D. 2015			K	Oreocnide_trinervis	14	ERR5033423
<i>Parartocarpus bracteatus</i> (King) Becc.	Parartocarpeae	Zerega & al. 730	Malaysia (Borneo)	2013	F, SAN	Parartocarpus_bracteatus	7	SRR12282873
<i>Parartocarpus venenosus</i> (Zoll. ex Moritzi) Becc.	Parartocarpeae	Zerega & al. 874	Malaysia (Borneo)	2013	F, SAN	Parartocarpus_venenosus	4	SRR12283105
<i>Paratrophis anthropophagorum</i> (Seem.) Benth. & Hook.f. ex Drake	Moreae	Degener 4698	Fiji	1941	F	Paratrophis_anthropophagorum	2	SRR12282876
<i>Paratrophis australiana</i> C.T.White	Moreae	Hyland 10634	Australia	1980	BO	Paratrophis_australiana	2	SRR12282872
<i>Paratrophis glabra</i> (Merr.) Steenis	Moreae	Gardner & al. 78	Malaysia (Borneo)	2014	F, SAN	Paratrophis_glabra	2	SRR3907307
<i>Paratrophis insignis</i> (Bureau) E.M.Gardner	Moreae	Monteagudo & al. 3734	Peru	2002	F	Paratrophis_insignis	2	SRR12282935
<i>Paratrophis microphylla</i> (Raoul) Cockayne	Moreae	Beecher sn	New Zealand	1942	F	Paratrophis_microphylla	2	SRR12282870
<i>Paratrophis pendulina</i> (Endl.) E.M.Gardner	Moreae	Fosberg 12877	USA Hawaii	1936	F	Paratrophis_pendulina	2	SRR12282862
<i>Paratrophis philippinensis</i> (Bureau) Fern.-Vill.	Moreae	Brambach 465	Sulawesi	2011	BO	Paratrophis_philippinensis	2	SRR12283087
<i>Parietaria judaica</i>	Outgroup: Urticaceae	Fay, M.F. 185			K	Parietaria_judaica	14	ERR5033411
<i>Pellionia repens</i>	Outgroup: Urticaceae	Chantaranonthai, P.; Parnell, J.; Simpson, D.; Sridit, K. 90/74 (K)			K	Pellionia_repens	14	
<i>Perebea angustifolia</i>	Olmedieae	Araya 479	Costa Rica	1994	F	Perebea_angustifolia_Araya_479_F	this study	SRR24706195
<i>Perebea guianensis</i> Aubl. subsp. <i>guianensis</i>	Olmedieae	Moya Huanca, Araceli Laura 142	Bolivia	2008	MO	Perebea_guianensis_subsp_guianensis_Moya_142	this study	SRR24706194

<i>Perebea guianensis</i> subsp <i>hirsuta</i>	Olmedieae	Graham 2336		2003	F	Perebea_guianensis_su bsp_hirsuta_Graham_ 2336_F	this study	SRR24706193
<i>Perebea humili</i>	Olmedieae	R Foster 11037	Peru	1985	F	Perebea_humilis_R_F oster_11037_F	this study	SRR24706192
<i>Perebea xanthochyma</i>	Olmedieae	Aguilar 10866		2008	F	Perebea_xanthochyma _Aguilar_10866_F	this study	SRR24706188
<i>Pilea longicaulis</i>	Urticaceae	Monro, A. 7590			K	Pilea_longicaulis	14	ERR5033667
<i>Poikilospermum nobile</i>	Urticaceae	Utteridge, T. 386			K	Poikilospermum_nobil e	14	ERR4009282
<i>Poulsenia armata</i>	Olmedieae	K. Thomsen 573	Costa Rica	1993	C10011557	Poulsenia_armata_C10 011557	this study	SRR24706187
<i>Pouzolzia zeylanica</i>	Urticaceae	J. Sibill 83			K	Pouzolzia_zeylanica	14	ERR5033419
<i>Pseudolmedia laevigata</i> Trécul	Olmedieae	Neill, David Alan 15741	Ecuador	2007	MO	Pseudolmedia_laevigat a_Neill_15741	this study	SRR24706186
<i>Pseudolmedia laevis</i> (Ruiz & Pav.) J.F. Macbr.	Olmedieae	Moya Huanca, Araceli Laura 144	Bolivia	2008	MO	Pseudolmedia_laevis_ Moya_144	this study	SRR24706185
<i>Pseudolmedia rigida</i> (Klotzsch & H.Karst.) Cuatrec.	Olmedieae	Moya Huanca, Araceli Laura 207	Bolivia	2008	MO K (K00125776	Pseudolmedia_rigida_ Moya_207	this study	SRR24706129
<i>Pseudolmedia spuria</i>	Olmedieae	Lobo & al. 263		2001	0)	Pseudolmedia_spuria_ Lobo263	2	ERS4414224
<i>Pseudostreblus indicus</i> Bureau	Parartocarp eae	Newman & al LA0518	Laos	2005	SING	Pseudostreblus_indicu s	2	SRR12282866
<i>Scyphosyce manniana</i>	Dorstenieae	H.F. 1220(P)		1987		Scyphosyce_manniana	8	
<i>Scyphosyce pandurata</i>	Dorstenieae	D.W. Thomas 6869(P)		1987		Scyphosyce_pandurata	3	SRR13188660
<i>Sloetia elongata</i>	Dorstenieae	P. Thomas & L.E. Teo no number(P)		1992		Sloetia_elongata	3	SRR13188659
<i>Sloetiopsis usambarensis</i> Engl.	Dorstenieae	Faden & al 77/417	Kenya	1977	F	Sloetiopsis_usambaren sis	2	SRR12282916
<i>Sorocea affinis</i> Hemsl	Moreae	Espinosa 706	Costa Rica	1992	F	Sorocea_affinis	2	SRR12282915
<i>Sorocea bonplandii</i> (Baill.) W.C.Burger	Moreae	Stevens & al. 30948	Paraguay	2011	MO	Sorocea_bonplandii	2	SRR12282914
<i>Sorocea briquetii</i> J.F.Macbr	Moreae	Valenzula & Huamantupa 954	Peru	2002	F	Sorocea_briquetii	2	SRR12283085
<i>Sorocea duckei</i> W.C.Burger	Moreae	Stein & Kallunki 3931	Peru	1987	F	Sorocea_duckei	2	SRR12282911
<i>Sorocea guillemianiana</i> Gaudich.	Moreae	Moya & al. 112	Bolivia	2008	MO	Sorocea_guillemianiana	2	SRR12283035
<i>Sorocea hilarii</i> Gaudich.	Moreae	Carauta 795	Brazil	1969	F	Sorocea_hilarii	2	SRR12282956

<i>Sorocea jaramilloi</i> C.C.Berg	Moreae	Madison 4772	Ecuador	1978	F	<i>Sorocea_jaramilloi</i>	2	SRR12282934
<i>Sorocea muriculata</i> Miq. subsp. <i>muriculata</i>	Moreae	Vigo & Graham 16489	Peru	2004	F	<i>Sorocea_muriculata_s</i> <i>ubsp_muriculata</i>	2	SRR12282923
<i>Sorocea muriculata</i> Miq. subsp. <i>uaupensis</i> (Baill.) C.C. Berg	Moreae	Plowman sn	Venezuela	1982	F	<i>Sorocea_muriculata_s</i> <i>ubsp_uaupensis</i>	2	SRR12282912
<i>Sorocea pubivena</i> Hemsl. subsp. <i>hirtella</i> (Mildbr.) C.C. Berg	Moreae	Vasquez & al. 19236	Peru	1994	F	<i>Sorocea_pubivena_sub</i> <i>sp_hirtella</i>	2	SRR12282880
<i>Sorocea pubivena</i> Hemsl. subsp. <i>oligotricha</i> (Akkermans & C.C. Berg)	Moreae	Kennedy 2124	Panama	1973	F	<i>Sorocea_pubivena_sub</i> <i>sp_oligotricha</i>	2	SRR12282945
<i>Sorocea pubivena</i> Hemsl. subsp. <i>pubivena</i>	Moreae	Galdames 4477	Panama	2000	F	<i>Sorocea_pubivena_sub</i> <i>sp_pubivena</i>	2	SRR12282871
<i>Sorocea sprucei</i> (Baill.) <i>J.F.Macbr.</i> subsp. <i>saxicola</i> (Hassl.) C.C.Berg	Moreae	Nee 35729	Bolivia	1987	F	<i>Sorocea_sprucei_subs</i> <i>p_saxicola</i>	2	SRR12282860
<i>Sorocea steinbachii</i> C.C.Berg	Moreae	Weiblen & al. 1501	Brazil	2000	MIN	<i>Sorocea_steinbachii</i>	2	SRR12283107
<i>Sorocea subumbellata</i> (C.C. Berg) Cornejo	Moreae	Dodson 9601	Ecuador	1980	F	<i>Sorocea_subumbellata</i>	2	SRR12283084
<i>Sorocea trophoides</i> <i>W.C.Burger</i>	Moreae	Fuentes 304	Costa Rica	1993	F K	<i>Sorocea_trophoides</i>	2	SRR12282877
<i>Sparattosyce dioica</i> Bureau	Olmedieae	Weiblen 1223	New Caledonia	2001	(K00061825 3)	<i>Sparratosyce_dioica_</i> <i>Weiblen1223</i>	2	ERS4414234
<i>Streblus asper</i> (Retz.) <i>Lour.</i>	Olmedieae	Gardner 696 Hoang & Averyanov CBL 1644	Indonesia Java cultivated	2018	F	<i>Streblus_asper_EG696</i>	2	SRR12282875
<i>Streblus tonkinensis</i>	Olmedieae		Vietnam, Cao Bang, Ha Lang Distr.	1999	MO	<i>Streblus_tonkinensis_</i> <i>Hoang_CBL1644</i>	this study	SRR24706128
<i>Taxotrophis ilicifolia</i> (Kurz) <i>S. Vidal</i>	Moreae	Gardner & al. 720	Singapore cultivated from Johor	2018	SING	<i>Taxotrophis_ilicifolia</i>	2	SRR12282874
<i>Taxotrophis macrophylla</i> (Blume) <i>Boerl.</i>	Moreae	Scornickova & al. JLS 2916	Vietnam	2014	SING	<i>Taxotrophis_macrophylla</i>	2	SRR12282857
<i>Taxotrophis spinosa</i> (Blume) <i>Steenis</i>	Moreae	Gardner & al. 702	Indonesia, Java, cult.	2018	F	<i>Taxotrophis_spinosa</i>	2	SRR12282856
<i>Taxotrophis taxoides</i> (<i>B.</i> <i>Heyne ex Roth</i>) <i>W.L.</i> <i>Chew ex E.M. Gardner</i>	Moreae	Gardner & al. 701	Indonesia, Java, cult.	2018	F	<i>Taxotrophis_taxoides</i>	2	SRR12282855
<i>Taxotrophis zeylanica</i> (Thwaites) <i>Thwaites</i>	Moreae	Meijer 701	Sri Lanka	1971	SING	<i>Taxotrophis_zeylanica</i>	2	SRR12282853

<i>Treculia acuminata</i>	Dorstenieae	J.J. Floret, A.M. Louis 1351(P)		1983		<i>Treculia_acuminata</i>	8	
<i>Treculia africana</i>	Dorstenieae	N. Zerega 909 (SAN)		2013		<i>Treculia_africana</i>	3	SRR13188658
<i>Treculia obovoidea</i>	Dorstenieae	Cheek, M. 15081(P)		2009		<i>Treculia_obovoidea</i>	8	
<i>Trema orientale</i> (L.) Blume	Outgroup: Cannabaceae	unknown	Netherlands			<i>Trema_orientale</i>	15	SRR5674478
<i>Trilepisium madagascariense</i>	Dorstenieae	Z. Ranktonirina & Georges Be 197(P)		2013		<i>Trilepisium_madagascariense</i>	3	SRR13188657
<i>Trophis cuspidata</i> Lundell	Moreae	Dominuez 774	Mexico	2004	MO	<i>Trophis_cuspidata</i>	2	SRR12282852
<i>Trophis involucrata</i> W.C.Burger	Moreae	Aguilar 4679	Costa Rica	1996	F	<i>Trophis_involucrata</i>	2	SRR12283089
<i>Trophis mexicana</i> (Liebm.) Bureau	Moreae	Stevens & Montiel 27939	Nicaragua		MO	<i>Trophis_mexicana</i>	2	SRR12282883
<i>Trophis racemosa</i> (L.) Urb.	Moreae	Stevens 37196	Nicaragua	2016	MO	<i>Trophis_racemosa</i>	2	SRR12283112
<i>Urtica urens</i> L.	Outgroup: Urticaceae	Fay 173		2000	K	<i>Urtica_urens</i>	2	ERS4414127
<i>Utsetela gabonensis</i> Pellegr.	Dorstenieae	Breteler 14086	Gabon	1997	MO	<i>Utsetela_gabonensis</i>	2	SRR12283083
<i>Utsetela neglecta</i> Jongkind	Dorstenieae	Bissiengou 923	Gabon	2009	MO	<i>Utsetela_neglecta</i>	2	SRR12283082

Table S2. Networks scores for all returned maximum pseudo-likelihood networks for (A) sample set 1 representing major nuclear lineages, (B) sample set 2 representing discordance between the nuclear and chloroplast topologies, and (C) the analysis based on 13,586 nuclear genes, showing number of allowed reticulations (r), network score as log probability, number of parameters (k), improvement in the network score compared to the best-scoring network with zero reticulations, AICc and BIC.

A. Sampling scheme 1 (42 samples)

r	log probability	k	improvement	AICc	BIC
0	-10277704	42	0	20555492.3	20555807.8
0	-10277708	42	-3.89E-05	20555500.3	20555815.8
0	-10277736	42	-0.000315	20555557.1	20555872.5
0	-10277770	42	-0.0006436	20555624.6	20555940.1
0	-10277778	42	-0.0007192	20555640.2	20555955.6
1	-10273034	46	0.04544223	20546159.6	20546505
1	-10273076	46	0.04502928	20546244.5	20546589.9
1	-10273382	46	0.04205609	20546855.6	20547201.1
1	-10273927	46	0.03675175	20547945.9	20548291.4
1	-10274445	46	0.03170955	20548982.4	20549327.8
2	-10268154	50	0.09291838	20536408.7	20536784.2
2	-10269056	50	0.08414636	20538211.8	20538587.3
2	-10269410	50	0.08069852	20538920.6	20539296
2	-10269439	50	0.0804208	20538977.6	20539353.1
2	-10269486	50	0.07996413	20539071.5	20539447
3	-10267544	54	0.09885089	20535197.3	20535602.8
3	-10267707	54	0.09726574	20535523.2	20535928.6
3	-10267897	54	0.09542238	20535902.1	20536307.5
3	-10268278	54	0.09171535	20536664.1	20537069.5
3	-10268294	54	0.09155679	20536696.6	20537102.1
4	-10265505	58	0.11869326	20531126.7	20531562.2
4	-10266196	58	0.11197072	20532508.5	20532944
4	-10266250	58	0.111448	20532616	20533051.5
4	-10266580	58	0.10823217	20533277	20533712.5
4	-10267036	58	0.10379894	20534188.3	20534623.8
5	-10265187	62	0.12178715	20530498.8	20530964.3
5	-10265514	62	0.11860848	20531152.2	20531617.7
5	-10265613	62	0.11763989	20531351.3	20531816.8
5	-10265667	62	0.11711477	20531459.2	20531924.7
5	-10265735	62	0.11645945	20531593.9	20532059.4
6	-10266359	66	0.1103872	20532850.2	20533345.7

6	-10266422	66	0.10976777	20532977.5	20533473
6	-10266560	66	0.10842788	20533252.9	20533748.4
6	-10266625	66	0.10779777	20533382.5	20533877.9
6	-10266951	66	0.10462557	20534034.5	20534530

B. Sampling scheme 2 (27 samples)

r	log probability	k	improvement	AICc	BIC
0	-3196554	42	0	6393192.23	6393507.67
0	-3196643.6	42	-0.0028045	6393371.53	6393686.96
0	-3196662.5	42	-0.0033941	6393409.22	6393724.66
0	-3196686.4	42	-0.0041425	6393457.06	6393772.5
0	-3196801.1	42	-0.0077321	6393686.55	6394001.99
1	-3193097.5	46	0.10813244	6386287.26	6386632.71
1	-3193106.8	46	0.10783937	6386306	6386651.45
1	-3193117.7	46	0.10750017	6386327.68	6386673.13
1	-3193132.6	46	0.10703187	6386357.62	6386703.07
1	-3193507	46	0.09532171	6387106.26	6387451.72
2	-3191499.7	50	0.15811653	6383099.78	6383475.24
2	-3191674.7	50	0.15264263	6383449.73	6383825.19
2	-3191703.2	50	0.15175111	6383506.73	6383882.19
2	-3191704.2	50	0.15171933	6383508.76	6383884.22
2	-3191876.4	50	0.14633072	6383853.26	6384228.72
3	-3191185.2	54	0.167954	6382478.92	6382884.39
3	-3191399.3	54	0.16125739	6382907.04	6383312.51
3	-3191440.2	54	0.15997931	6382988.75	6383394.22
3	-3191473.1	54	0.1589502	6383054.54	6383460.01
3	-3191585.3	54	0.15543746	6383279.12	6383684.59
4	-3190478.8	58	0.19005534	6381074.03	6381509.49
4	-3190764	58	0.18113048	6381644.6	6382080.07
4	-3190860.7	58	0.178106	6381837.96	6382273.43
4	-3190891.8	58	0.17713543	6381900.01	6382335.48
4	-3190892.2	58	0.17712038	6381900.97	6382336.44
5	-3190395.7	62	0.19265411	6380915.96	6381381.42
5	-3190455.7	62	0.19077821	6381035.88	6381501.35
5	-3190500.7	62	0.18936872	6381125.99	6381591.46
5	-3190608.4	62	0.18599901	6381341.42	6381806.89
5	-3190657.7	62	0.1844585	6381439.91	6381905.37
6	-3190490.9	66	0.189677	6381114.36	6381609.82

6	-3190502.6	66	0.18930933	6381137.87	6381633.32
6	-3190508.3	66	0.1891312	6381149.26	6381644.71
6	-3190595.9	66	0.18639032	6381324.48	6381819.94
6	-3190656.5	66	0.18449597	6381445.59	6381941.04

C. WGS sampling

r	log probability	k	improvement	AICc	BIC
0	-10813002	42	0	21626088.6	21626404
0	-10813003	42	-1.01E-05	21626090.7	21626406.2
0	-10813058	42	-0.0005134	21626199.6	21626515
0	-10813060	42	-0.0005366	21626204.6	21626520
0	-10816352	42	-0.0309767	21632787.6	21633103
1	-10811327	46	0.01549526	21622745.6	21623091.1
1	-10812502	46	0.00462708	21625096	21625441.4
1	-10812723	46	0.00257846	21625539	21625884.5
1	-10812952	46	0.00046667	21625995.7	21626341.2
1	-10812969	46	0.00030962	21626029.7	21626375.1
2	-10803130	50	0.09129447	21606361.3	21606736.8
2	-10803175	50	0.09088664	21606449.5	21606825
2	-10803245	50	0.09023857	21606589.7	21606965.1
2	-10803501	50	0.08786509	21607103	21607478.4
2	-10803912	50	0.08406238	21607925.3	21608300.8
3	-10803557	54	0.08734828	21607222.8	21607628.3
3	-10803607	54	0.08688896	21607322.1	21607727.6
3	-10803640	54	0.08658394	21607388.1	21607793.6
3	-10803734	54	0.08571043	21607577	21607982.5
3	-10808942	54	0.03754863	21617992.5	21618397.9
4	-10792556	58	0.18908934	21585228.3	21585663.8
4	-10792875	58	0.18613748	21585866.7	21586302.2
4	-10794534	58	0.17079173	21589185.4	21589620.9
4	-10804090	58	0.08241893	21608296.9	21608732.4
4	-10804359	58	0.07993181	21608834.8	21609270.2
5	-10788551	62	0.22612906	21577226.2	21577691.7
5	-10788576	62	0.22589648	21577276.5	21577742
5	-10788783	62	0.22398138	21577690.7	21578156.1
5	-10789497	62	0.21737481	21579119.4	21579584.9

5	-10789556	62	0.21683406	21579236.3	21579701.8
6	-10790385	66	0.20916905	21580902.1	21581397.5
6	-10790703	66	0.20622764	21581538.2	21582033.6
6	-10790836	66	0.204996	21581804.5	21582300
6	-10790927	66	0.20415176	21581987.1	21582482.5
6	-10791063	66	0.20289394	21582259.1	21582754.6

Table S3. Fossil calibrations used in this study.

Clade	Calibration (Min–Max)	Fossil taxon	Citation
Crown Moraceae+Urticaceae	81.7–93.3	secondary calibration	16
Crown Moraceae	73.2–84.7	secondary calibration	16
Crown Artocarpeae	64–	† <i>Artocarpoxyton deccanensis</i>	17
Crown Dorstenieae	33.9–	† <i>Broussonetia rugosa</i>	18
Stem Ficeae	56–	† <i>Ficus lucidus</i>	18
Stem Pharmacosycea	16–	† <i>Tetrapus delclosi</i>	19
Stem Americanae	17–	† <i>Pegoscapus peritus</i>	19
Stem Galoglychia	34–	† <i>Archaegaon</i>	20, 21
Crown Boehmerieae	41.2–	† <i>Forskohleanthium nudum</i>	18
Stem Boehmeria	23.03–	† <i>Boehmeria sibirica</i>	18
Stem Pilea	23.03–	† <i>Pilea lithuanica</i>	18
Crown Urticaceae	48.7–	†unnamed Leaf Type 1	22

References

1. W. L. Clement, *et al.*, Evolution and classification of figs (Ficus, Moraceae) and their close relatives (Castilleae) united by involucre bracts. *Bot. J. Linn. Soc.* **193**, 316–339 (2020).
2. E. M. Gardner, *et al.*, Repeated parallel losses of inflexed stamens in Moraceae: phylogenomics and generic revision of the tribe Moreae and the reinstatement of the tribe Olmedieae (Moraceae). *Taxon* **70**, 946–988 (2021).
3. E. M. Gardner, *et al.*, Phylogenomics of *Brosimum* (Moraceae) and allied genera, including a revised subgeneric system. *TAXON* **70**, 778–792 (2021).
4. M. G. Johnson, *et al.*, HybPiper: Extracting Coding Sequence and Introns for Phylogenetics from High-Throughput Sequencing Reads Using Target Enrichment. *Appl. Plant Sci.* **4**, 1600016 (2016).
5. E. M. Gardner, *et al.*, Paralogs and Off-Target Sequences Improve Phylogenetic Resolution in a Densely Sampled Study of the Breadfruit Genus (*Artocarpus*, Moraceae). *Syst. Biol.* **70**, 558–575 (2021a).
6. E. M. Gardner, M. G. Johnson, D. Ragone, N. J. Wickett, N. J. C. Zerega, Low-Coverage, Whole-Genome Sequencing of *Artocarpus camansi* (Moraceae) for Phylogenetic Marker Development and Gene Discovery. *Appl. Plant Sci.* **4**, 1600017 (2016).
7. N. J. C. Zerega, E. M. Gardner, Delimitation of the new tribe Parartocarpeae (Moraceae) is supported by a 333-gene phylogeny and resolves tribal level Moraceae taxonomy. *Phytotaxa* **388**, 253–265 (2019).
8. Q. Zhang, E. Gardner, N. Zerega, H. Sauquet, Long-distance dispersal shaped the diversity of tribe Dorstenieae (Moraceae). *bioRxiv*, 531855 (2019).
9. Hu, Y., Peng, X., Wang, F. *et al.* Natural population re-sequencing detects the genetic basis of local adaptation to low temperature in a woody plant. *Plant Mol Biol* **105**, 585–599 (2021).
10. G. Wang, *et al.*, Genomic evidence of prevalent hybridization throughout the evolutionary history of the fig-wasp pollination mutualism. *Nat. Commun.* **12**, 718 (2021).
11. K. Shirasawa, *et al.*, The *Ficus erecta* genome aids *Ceratocystis* canker resistance breeding in common fig (*F. carica*). *The Plant Journal*, **102**, 1313–1322 (2020).
12. S. Xu, S. Guo, D. Fan & J. Wang, The complete chloroplast genome sequence of *Ficus formosana* Maxim (Moraceae) from Guangzhou, China, *Mitochondrial DNA Part B*, **6**, 1895–1896 (2021).
13. J. Fungjanthuek, Z.-R. Zhang, Y.-Q. Peng & J. Gao The complete chloroplast genome of two related fig species *Ficus squamosa* and *Ficus heterostyla*, *Mitochondrial DNA Part B*, **7**, 236–238 (2022).
14. W. J. Baker *et al.*, A Comprehensive Phylogenomic Platform for Exploring the Angiosperm Tree of Life, *Systematic Biology* **71**, 301–319 (2022).
15. R. Van Velzen, *et al.*, Comparative genomics of the nonlegume *Parasponia* reveals insights into evolution of nitrogen-fixing rhizobium symbioses. *Proceedings of the National Academy of Sciences*, **115**, E4700–E4709 (2018).
16. Q. Zhang *et al.*, Estimating divergence times and ancestral breeding systems in *Ficus* and Moraceae. *Ann. Bot.* **123**, 191–204 (2019).
17. R. C. Mehrotra, U. Prakash, M. B. Bande, Fossil woods of *Lophopetalum* and *Artocarpus* from the Deccan Intertrappean Beds of Mandla district, Madhya Pradesh, India. *Palaeobotanist* **32**, 310–320 (1984).
18. M. Collinson, The fossil history of the Moraceae, Urticaceae (including Cecropiaceae), and Cannabaceae. In: P. R. Crane, S. Blackmore, eds. *Evolution, systematics, and fossil history of the Hamamelidae* **2**, 319–339 (1989).
19. L. C. Pederneiras, *et al.*, The role of biogeographical barriers and bridges in determining divergent lineages in *Ficus* (Moraceae). *Botanical Journal of the Linnean Society*, **187**, 594–613 (2018).

20. S. G. Compton *et al.*, Ancient fig wasps indicate at least 34 Myr of stasis in their mutualism with fig trees. *Biology Letters*, **6**, 838–842 (2010).
21. A. V. Antropov *et al.*, The wasps, bees and ants (Insecta: Vespida = Hymenoptera) from the Insect Limestone (Late Eocene) of the Isle of Wight, UK. *Earth and Environmental Science Transactions of the Royal Society of Edinburgh*, **104**, 335-446 (2014).
22. M. L. DeVore *et al.*, Urticaceae leaves with stinging trichomes were already present in latest early Eocene Okanogan Highlands, British Columbia, Canada. *American Journal of Botany* **107**, 1449–1456 (2020).

Dataset S1. Available at <https://doi.org/10.5061/dryad.x0k6djhqg>

ficus_data/ data for the main *Ficus* analyses
 alignments/
 gene_trees/
 species_tree/
 networks/
chloroplast_data/ data for the chloroplast analyses
wgs_data/ data for the analyses based on whole-genome reads
 alignments/
 gene_trees/
 species_tree/
 networks/
moraceae_data/ data for the Moraceae analyses
 alignments/
 gene_trees/
 species_tree/
 time_calibration/
 biogeography/
scripts/ scripts for conducting analyses and building figures
baits/ bait sequences used for target enrichment