

Figure S2

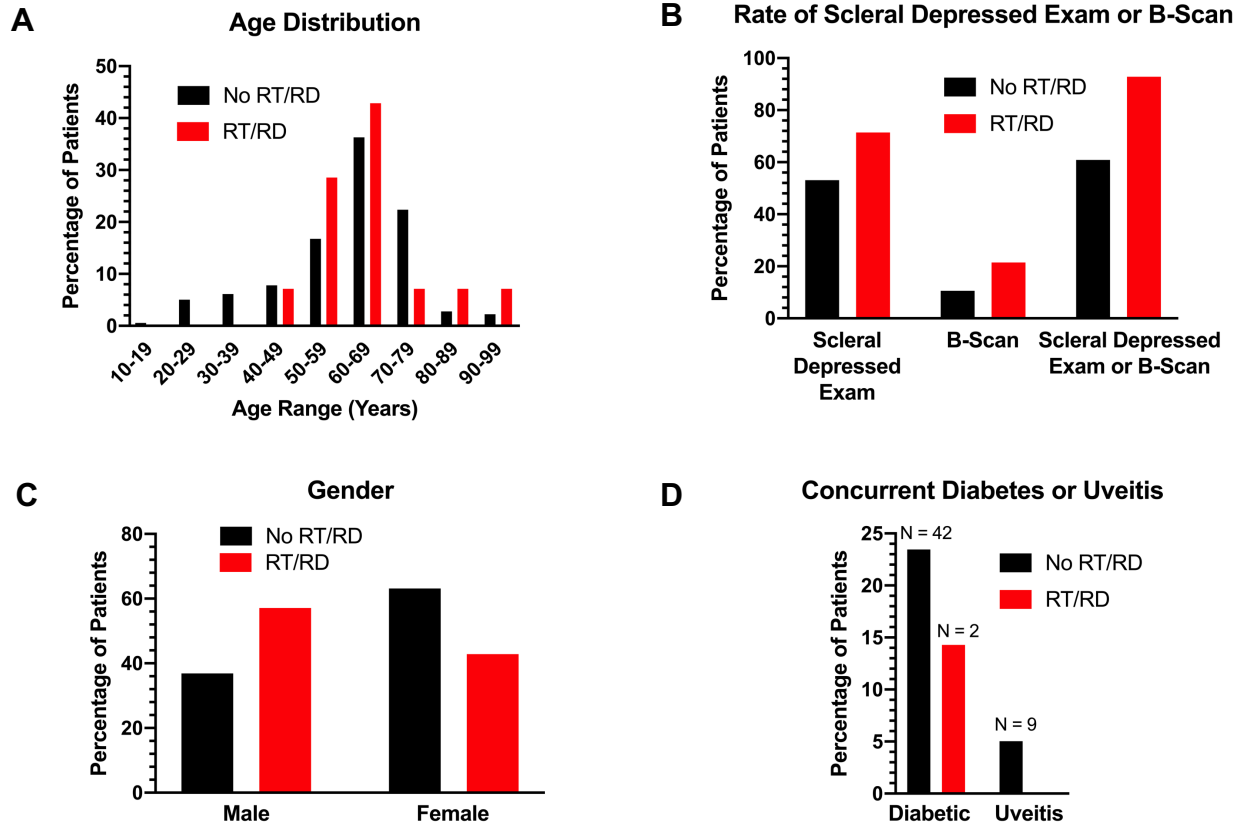


Figure S2. Additional Demographics and Physical Exam Characteristics for Screened Patients. (A) Age distribution of patients with and without RT/RDs, (B) Follow-up physical exam, (C) Gender in patients with and without RT/RDs, (D) Presence of diabetes or uveitis in patients with or without RT/RDs.

Figure S3

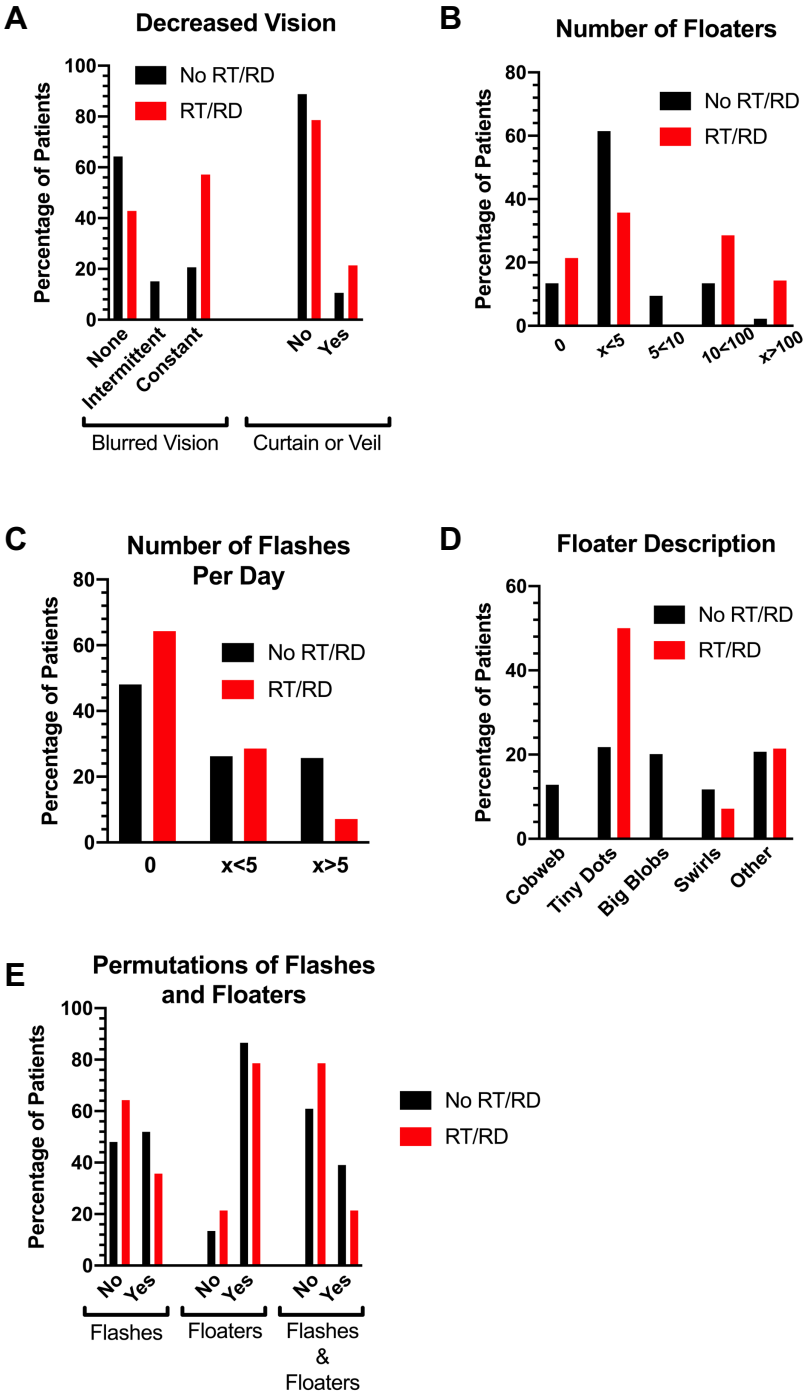


Figure S3. Symptoms in Patients With and Without RT/RDs. (A) Blurred vision or curtain/veil, (B) Number of floaters, (C) Number of flashes, (D) Description of floaters, (E) Patients with both flashes and floaters.

Figure S4

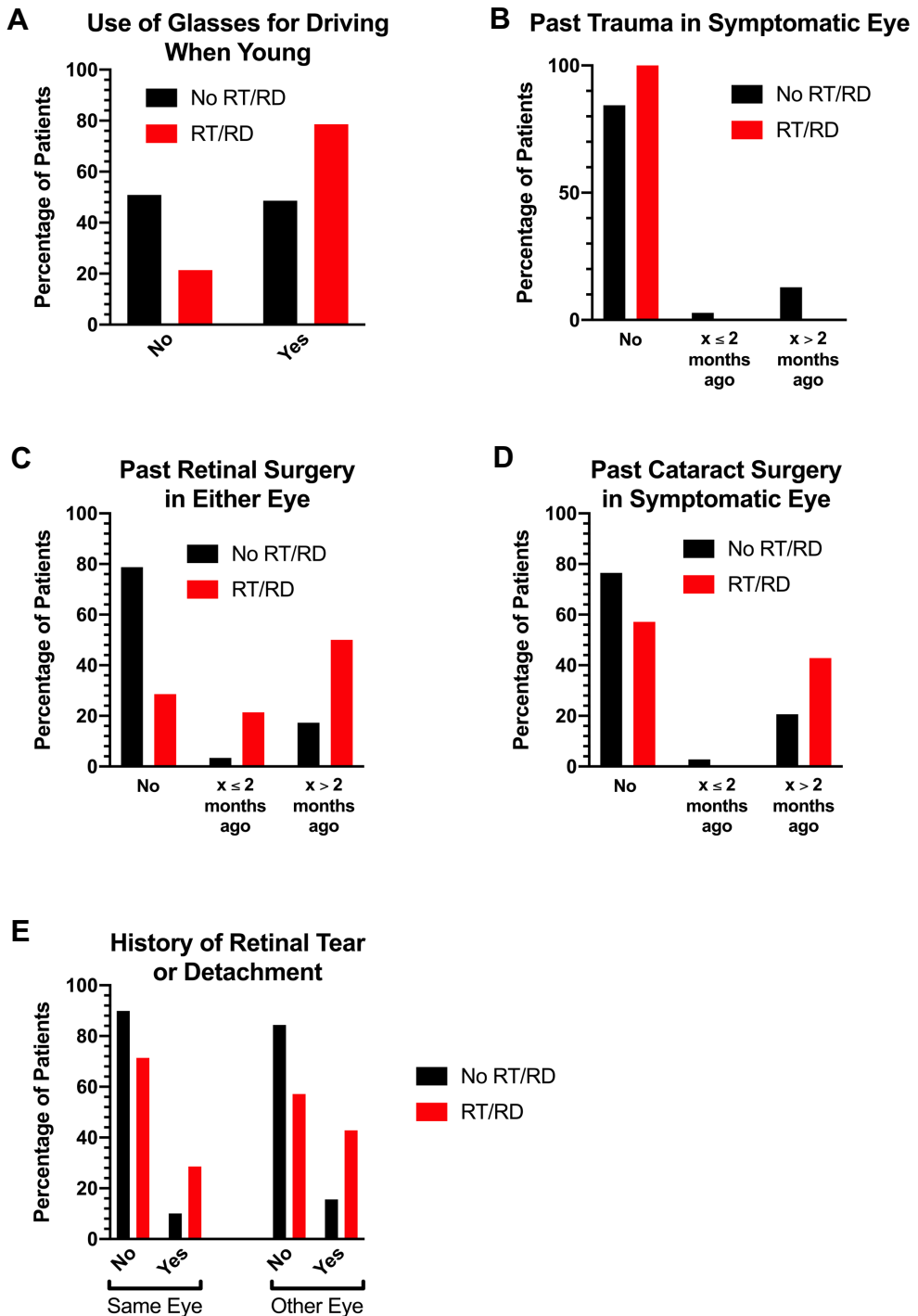


Figure S4. Ophthalmic History in Patients With and Without RT/RDs. (A) Use of glasses for driving when young (proxy for myopia), (B) Past eye trauma, (C) Past retinal surgery in either eye, (D) Past cataract surgery in symptomatic eye, (E) History of retinal tear or detachment in symptomatic or fellow eye.

Figure S6

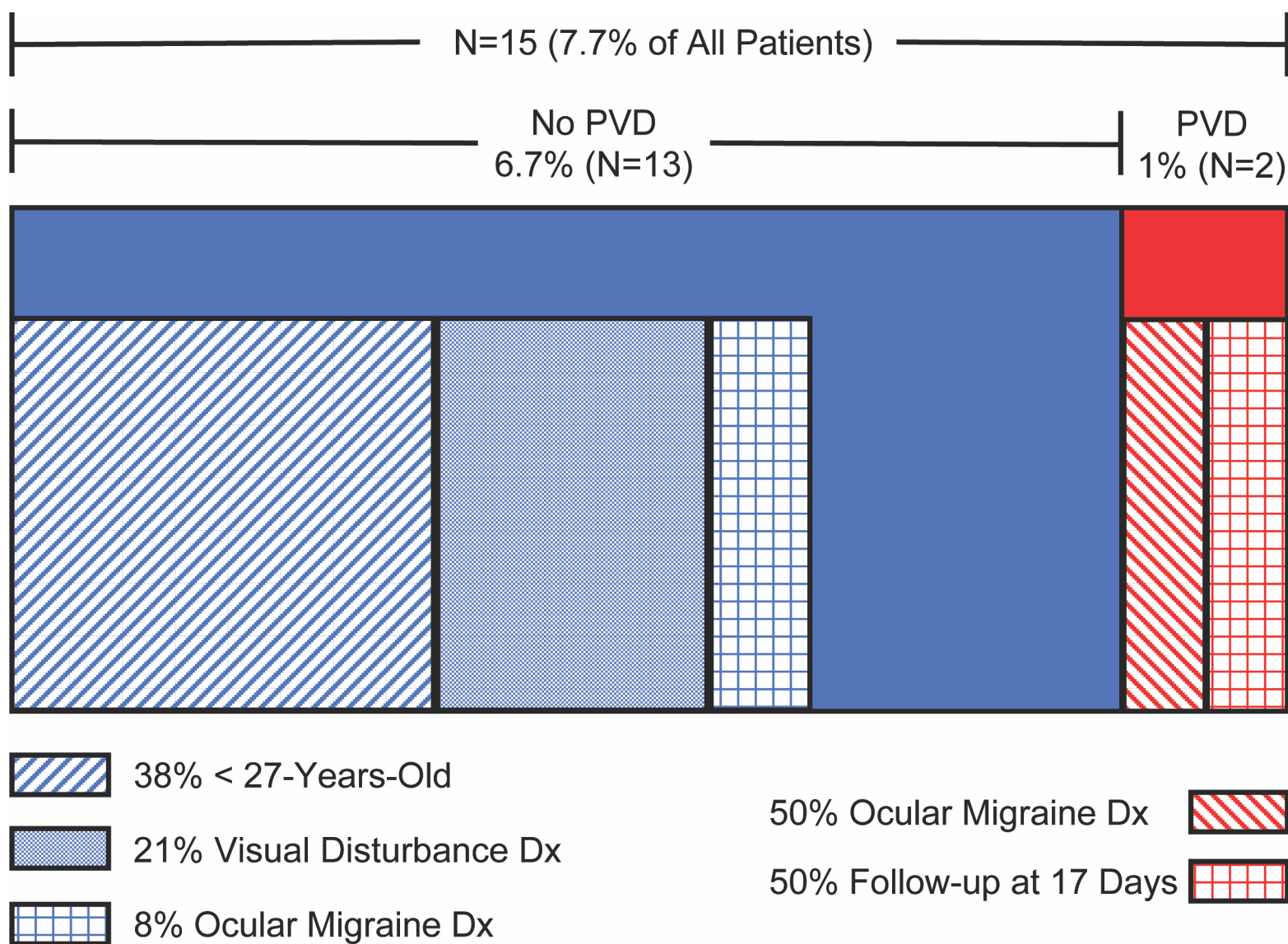


Figure S6. Demographic Features, Physical Exam Characteristics, and Diagnoses of Patients Without a Scleral Depressed Exam (SDE) or B-scan on First Follow-Up Visit and Who Did Not Have a Follow-Up Visit at Least Four Weeks After Phone Triage. 15 patients (7.7% of all patients included in the study) that did not have an SDE or B-scan at their first clinical examination did not have follow-up four weeks or more from their phone triage date. Of these 15 patients, 13 did not have a PVD (and no Shafer's sign or vitreous hemorrhage either), making them extremely low risk for a missed RT/RD. Two patients did have a PVD. However, one of these patients had a pre-existing PVD and their symptoms were attributed to ocular migraine. That leaves a single patient who failed to undergo SDE or B-scan and actually had a symptomatic PVD. This patient was seen 17 days after their phone triage, but not seen again, and again did not have Shafer's sign or vitreous hemorrhage.

Variable	Level	OR	95% OR CI Lower	95% OR CI Upper	P-value	Global P-Value
Age	N/A	1.02	0.98	1.06	0.3689	
Sex	Male vs. Female	2.28	0.76	6.87	0.1418	
Clinic Association	Comprehensive vs. Retina	0.31	0.04	2.52	0.2720	0.5460
	New vs. Retina	0.92	0.27	3.13	0.8904	
<i>Eye</i>	<i>OD/OS vs. OU</i>	<i>>999.99</i>	<i><0.001</i>	<i>>999.99</i>	<i>0.3687*</i>	
Start of Symptoms	1-2 Weeks Ago vs. Within 24 Hours	0.24	0.03	1.99	0.1842	0.6181
	3-7 Days Ago vs. Within 24 Hours	<0.001	<0.001	>999.999	0.9594	
	More than 2 Weeks Ago vs. Within 24 Hours	0.41	0.08	2.06	0.2802	
	Within 72 Hours vs. Within 24 Hours	0.58	0.14	2.34	0.4442	
Start of Symptoms (Trinary)	Within 24-72 Hours vs. More than 72 Hours	2.88	0.55	14.97	0.2087	0.0717
	Within 24 Hours vs. More than 72 Hours	4.97	1.26	19.55	0.0218	
Symptom Progression	Improving vs. Stable	1.61	0.38	6.83	0.5162	0.6432
	Worsening vs. Stable	1.74	0.51	5.97	0.3816	
Number of Floaters	More than 10 and Less than 100 vs. Less than 5	3.67	0.92	14.68	0.0663	0.1156
	More than 100 vs. Less than 5	11.00	1.61	74.99	0.0143	
	More than 5 and Less than 10 vs. Less than 5	<0.001	<0.001	>999.999	0.9751	
	None vs. Less than 5	2.75	0.62	12.30	0.1856	
Number of Floaters (Binary)	More Than 10 or None vs. 1-10	4.40	1.41	13.74	0.0109	
Floater Description	Big Blobs vs. Tiny Dots	<0.001	<0.001	>999.999	0.9610	0.7130
	Cobweb vs. Tiny Dots	<0.001	<0.001	>999.999	0.9688	
	Swirl vs. Tiny Dots	0.27	0.03	2.30	0.2289	
	Other vs. Tiny Dots	0.46	0.11	1.93	0.2917	
Floater Description (Binary)	Tiny Dots vs. All Others	5.21	1.45	18.74	0.0116	
<i>Flashes</i>	<i>5 or More Per Day vs. Less than 5 Per Day</i>	<i>0.26</i>	<i>0.03</i>	<i>2.37</i>	<i>0.2301</i>	<i>0.3393</i>
	<i>None vs. Less than 5 Per Day</i>	<i>1.23</i>	<i>0.36</i>	<i>4.21</i>	<i>0.7419</i>	
Flashes and Floaters	Yes vs. No	0.43	0.11	1.58	0.2006	

Blurred Vision	Constant vs. None	4.14	1.35	12.72	0.0130	0.0456
	Intermittent vs. None	<0.001	<0.001	>999.999	0.9683	
Blurred Vision (Binary)	Constant vs. Intermittent or None	5.12	1.67	15.66	0.0042	
Presence of Curtain or Veil	Yes vs. No	2.30	0.59	8.97	0.2315	
Constant Blurred Vision or Curtain or Veil	Yes vs. No	6.82	2.04	22.78	0.0018	
Pain	Dull or Achy vs. None	<0.001	<0.001	>999.999	0.9715	0.9620
	Pressure Sensation vs. None	2.30	0.45	11.72	0.3162	
	Scratchy, Sandy, or Foreign Body Sensation vs. None	<0.001	<0.001	>999.999	0.9832	
	Sharp vs. None	<0.001	<0.001	>999.999	0.9890	
	Throbbing vs. None	<0.001	<0.001	>999.999	0.9936	
Pain (Binary)	Yes vs. No	0.56	0.12	2.61	0.4610	
Use of Glasses to Drive While Young	Yes vs. No	3.83	1.04	14.21	0.0443	
History of RT/RD in the Same Eye	Yes vs. No	3.58	1.02	12.58	0.0470	
History of RT/RD in the Other Eye	Yes vs. No	4.05	1.30	12.56	0.0156	
History of RT/RD in Either Eye	Yes vs. No	6.68	2.11	21.10	0.0012	
Current Symptoms Similar to Past RT/RD	Yes vs. No	0.35	0.06	1.98	0.2354	
<i>Diabetic</i>	<i>Yes vs. No</i>	<i>0.54</i>	<i>0.12</i>	<i>2.53</i>	<i>0.4369</i>	
Uveitis	Yes vs. No	<0.001	<0.001	>999.999	1.000*	
Trauma	More than 2 Months Ago vs. No	<0.001	<0.001	>999.999	0.9693	0.9991
	Within the Past 2 Months vs. No	<0.001	<0.001	>999.999	0.9857	
Trauma (Binary)	Any Trauma vs. No	<0.001	<0.001	>999.999	0.2283*	
Prior Retinal Surgery in Either Eye	More than 2 Months Ago vs. No	8.02	2.21	29.08	0.0015	0.0007
	Within the Past 2 Months vs. No	17.75	3.23	97.68	0.0009	

Prior Retinal Surgery in Either Eye (Binary)	Yes vs. No	9.60	2.85	32.33	0.0003	
Prior Cataract Surgery in Either Eye	More than 2 Months Ago vs. No	2.78	0.91	8.50	0.0736	0.2019
	Within the Past 2 Months vs. No	<0.001	<0.001	>999.999	0.9862	
Prior Cataract Surgery in Either Eye (Binary)	Yes vs. No	2.45	0.80	7.45	0.1153	
Last PCP visit	More than 2 Years Ago vs. Within Past Year	2.20	0.20	23.74	0.5159	0.8680
	Within Past 2 Years vs. Within Past Year	<0.001	<0.001	>999.999	0.9757	
	Within Past 3 Months vs. Within Past Year	0.49	0.11	2.16	0.3451	
	Within Past 6 Months vs. Within Past Year	0.80	0.14	4.46	0.7990	
	Within Past 1 Month vs. Within Past Year	0.64	0.15	2.87	0.5634	
Last PCP Visit (Binary)	More than 6 months Ago vs. Within 6 months	1.42	0.47	4.26	0.5367	

* = Fisher's Exact Test

Table S2. Univariate Analysis of Phone Triage Data. **Bolded variables** and associated levels (all with p-value of 0.2 or less) were used in subsequent multivariable logistic regression analysis. *Italicized variables* and associated levels were also used in subsequent multivariable logistic regression analysis despite a p-value of >0.2 in univariate analysis for reasons detailed in the text.

Variable	Level	OR	95% OR CI Lower	95% OR CI Upper	P-value	Global P-Value
Sex	Male vs. Female	1.39	0.38	5.16	0.6204	
Eye	OD/OS vs. OU	0.06	0.00	3.17	0.1627	
Start of Symptoms	More than 72 Hours vs. Within 72 Hours	0.38	0.10	1.47	0.1600	
Floater	More Than 10 or None vs. 1-10	1.62	0.36	7.31	0.5323	
Floater Description	Not Applicable vs. All Others	1.14	0.14	9.41	0.9029	0.7112
	Tiny Dots vs. All Others	1.81	0.43	7.60	0.4170	
Flashes	Equal to or Greater than 5 or None vs. 1-5	1.60	0.34	7.43	0.5501	
Constant Blurred Vision or Curtain or Veil	Yes vs. No	7.33	1.73	31.04	0.0068	
Use of Glasses to Drive While Young	Yes vs. No	2.08	0.52	8.28	0.2998	
<i>History of RT/RD in Either Eye</i>	<i>Yes vs. No</i>	<i>1.38</i>	<i>0.29</i>	<i>6.61</i>	<i>0.6850</i>	
Prior Retinal Surgery in Either Eye	Yes vs. No	9.90	1.55	63.41	0.0156	
Prior Cataract Surgery in Symptomatic Eye	Yes vs. No	1.04	0.22	4.92	0.9583	
Diabetic	Yes vs. No	0.19	0.03	1.34	0.0955	

Table S3. Full Multivariable Model Analysis Based on Phone Triage Data. Variables with $p < 0.3$ are in **bold** and were carried forward to more parsimonious multivariable models. Variables that are *italicized* had $p > 0.3$ but were carried forward to more parsimonious models for reasons described in the text.

Variable	Level	OR	95% OR CI Lower	95% OR CI Upper	P-value
Eye	OD/OS vs. OU	0.16	0.01	4.41	0.2765
Start of Symptoms	More than 72 Hours vs. Within 72 Hours	0.51	0.14	1.81	0.2951
Constant Blurred Vision or Curtain or Veil	Yes vs. No	8.37	2.40	29.22	0.0009
Use of Glasses to Drive While Young	Yes vs. No	1.85	0.50	6.93	0.3594
Diabetic	Yes vs. No	0.53	0.11	2.46	0.4171
History of RT/RD in Either Eye	Yes vs. No	6.03	1.75	20.81	0.0045

Table S5. Full Multivariable Model for Phone Triage Data Without “Past Retinal Surgery in Either Eye” Variable.