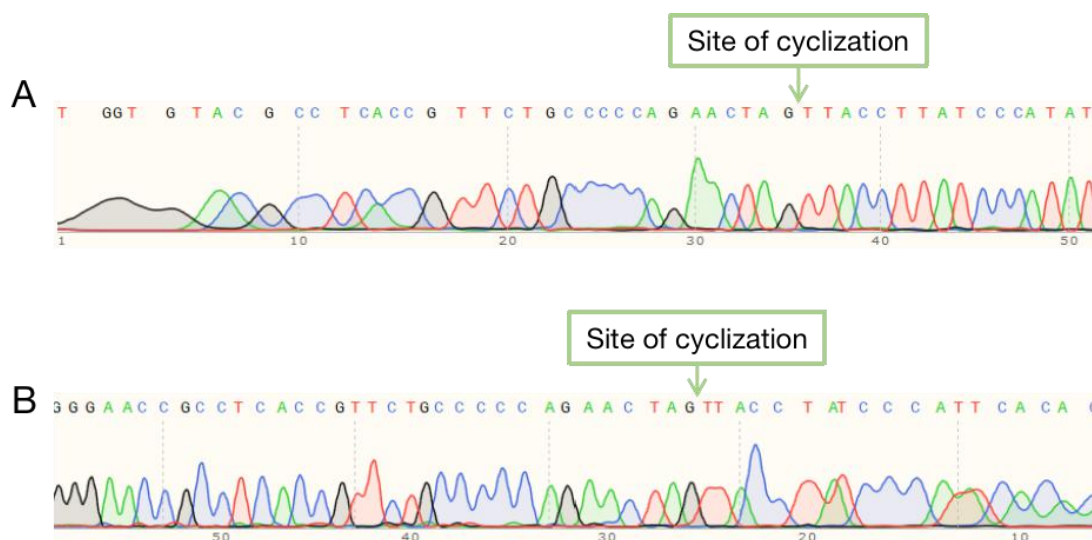


Supplementary Tables

Supplementary Table 1. Primers used for qRT-PCR

| Genes | Forward (5'-3') | Reverse (5'-3') |
|------------------------|------------------------|-------------------------|
| circRSU1 | TCGCTGCCTAAGGAAATCGG | ATGGCTGAGGACCAGTTGTG |
| miR-345-3p | TGGTTATTAGCCCTGAACGAG | AGTGCGTGTTCGTGGAGTCG |
| TAZ | TGCTACAGTGTCCCCACAAC | GAAACGGGTCTGTTGGGGAT |
| VEGF | GGCAGAATCATCACGAAGT | TGGTGATGTTGGACTCCTCA |
| β -actin | GAGAAAATCTGGCACCACACC | GGATAGCACAGCCTGGATAGCAA |
| U6 | CTCGCTTCGGCAGCACA | AACGCTTCACGAATTTGCGT |
| circRSU1 Convergent | GAGCTTACCCAGCTTAAAGAGC | GGCACCATTGTTAGCTTGTATG |
| circRSU1 Divergent | CATGAACAGGCTGAACACTTTG | TCAGGTAGAAGAAGTTTCCAGG |
| GAPDH Convergent | ATGGCCTCCAAGGAGTAAATG | AGGTCAATGAAGGGGTCATTG |
| GAPDH Divergent | AGAAGGCTGGGGCTCATTG | GCAGGAGGCATTGCTGATGAT |

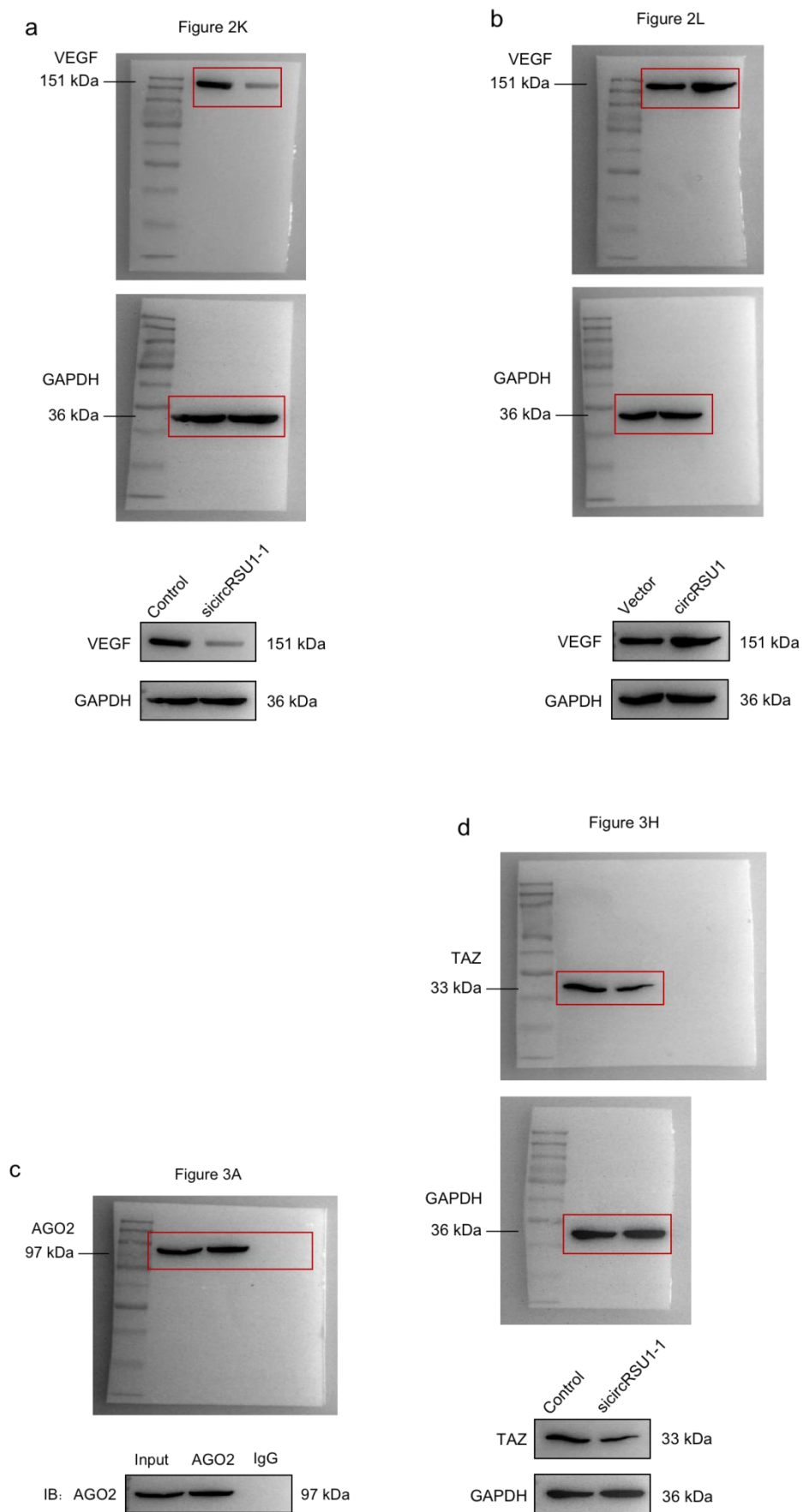
Supplementary Figures



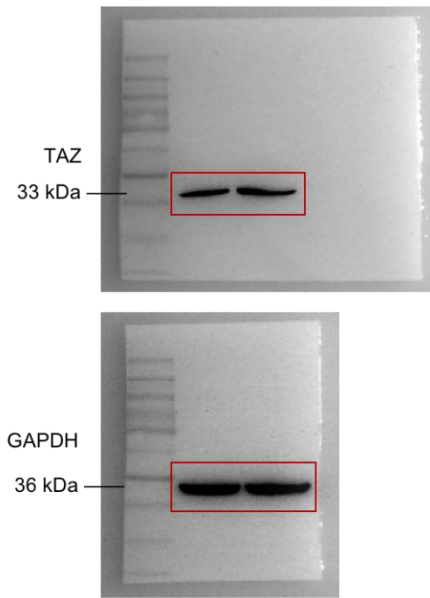
Supplementary Figure 1. DNA sequencing results of circRSU1.

The cyclization site sequence of circR in circBase is GCCCCAGAACTAGTTACCTTATCCCAT.

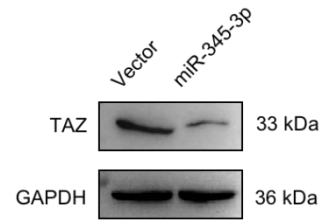
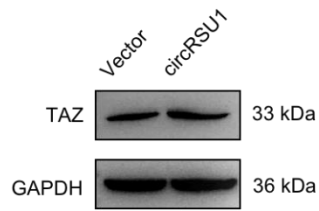
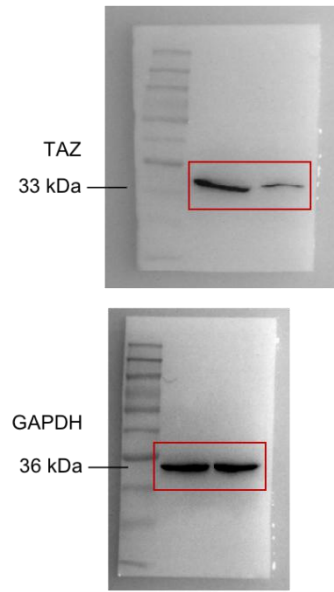
Supplementary Figure 2. Unedited/uncropped Western blot gels



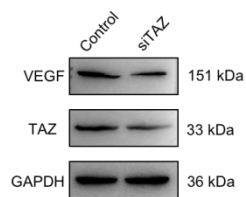
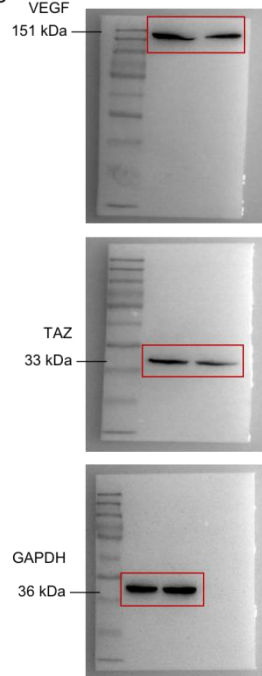
e Figure 3I



f Figure 3J



g Figure 4G



h Figure 5F

