

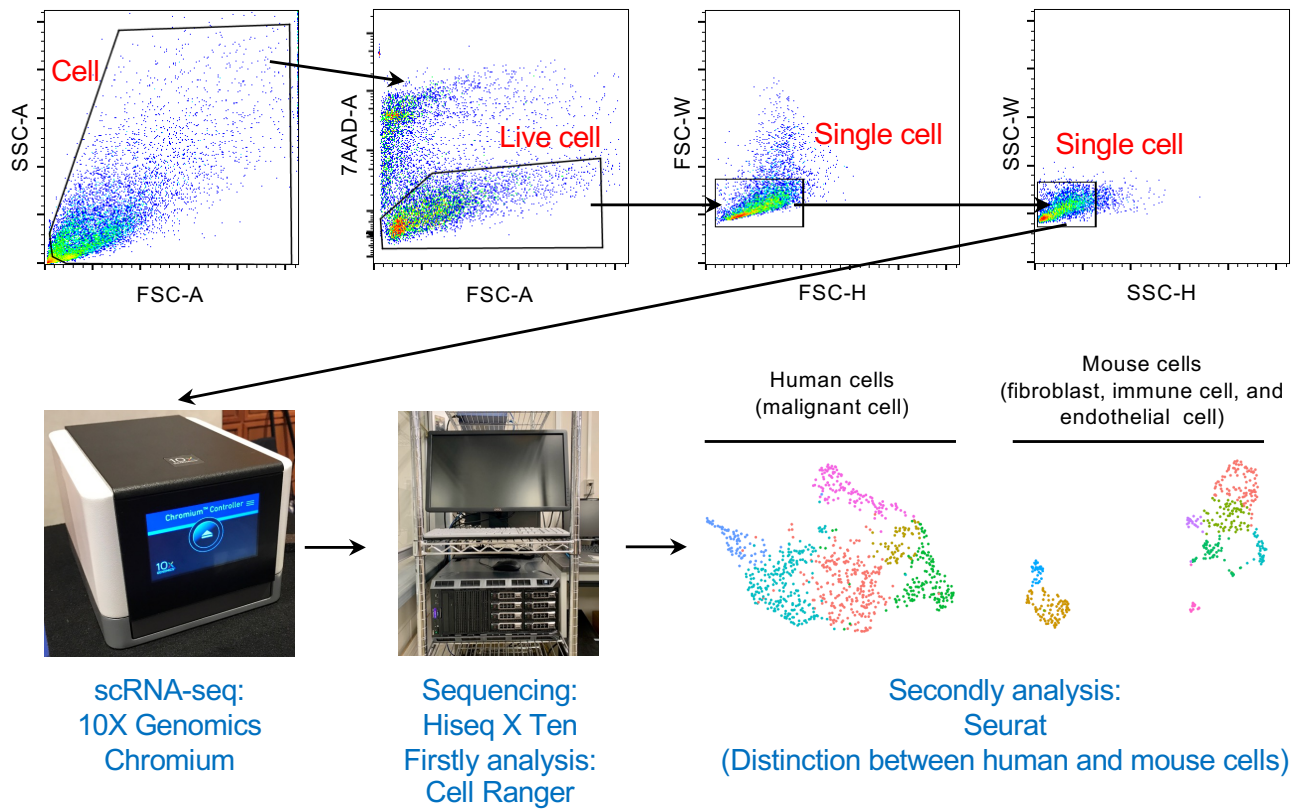
Appendix to:

YAP/BRD4-controlled ROR1 promotes tumor-initiating cells and hyperproliferation in pancreatic cancer

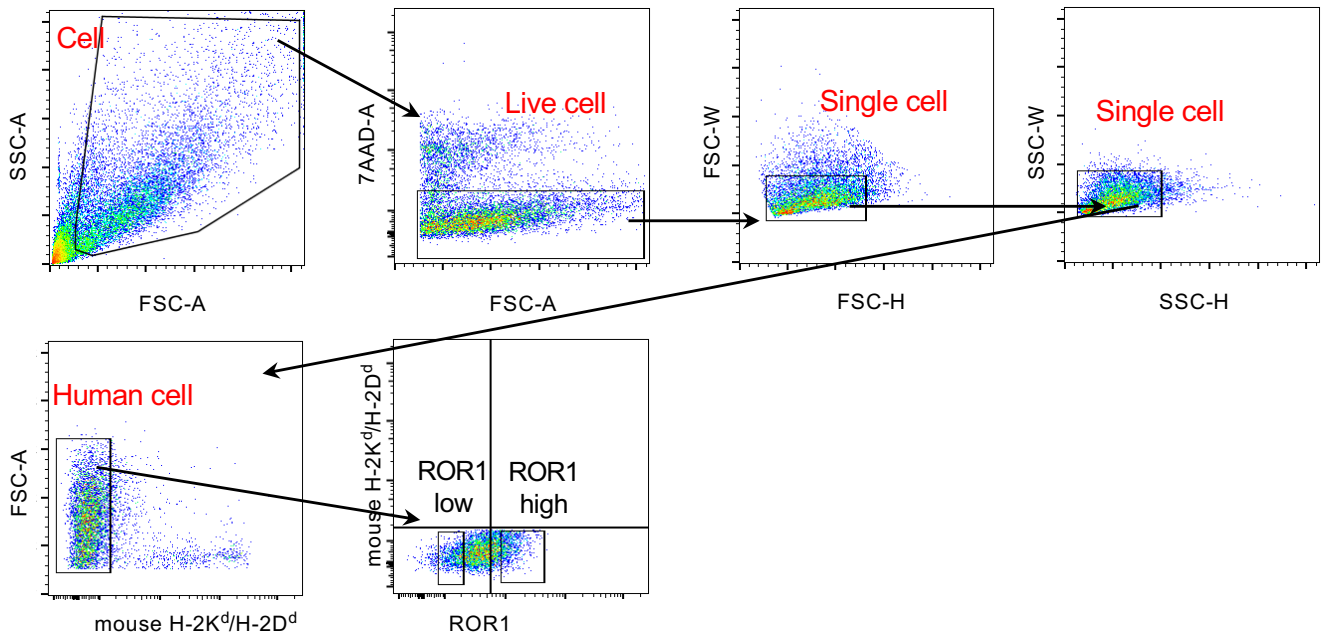
Masaya Yamazaki, Shinjiro Hino, Shingo Usuki, Yoshihiro Miyazaki, Tatsuya Oda, Mitsuyoshi Nakao, Takaaki Ito, and Kazuya Yamagata

Table of contents

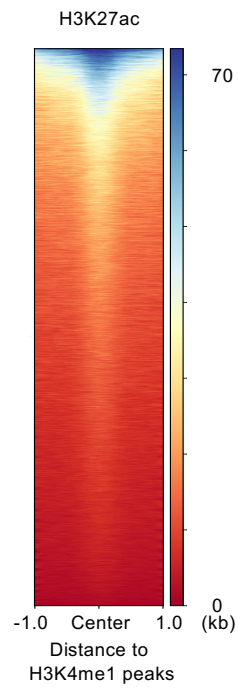
Appendix Figure S1	2
Appendix Figure S2	3
Appendix Figure S3	4
Appendix Figure S4	5



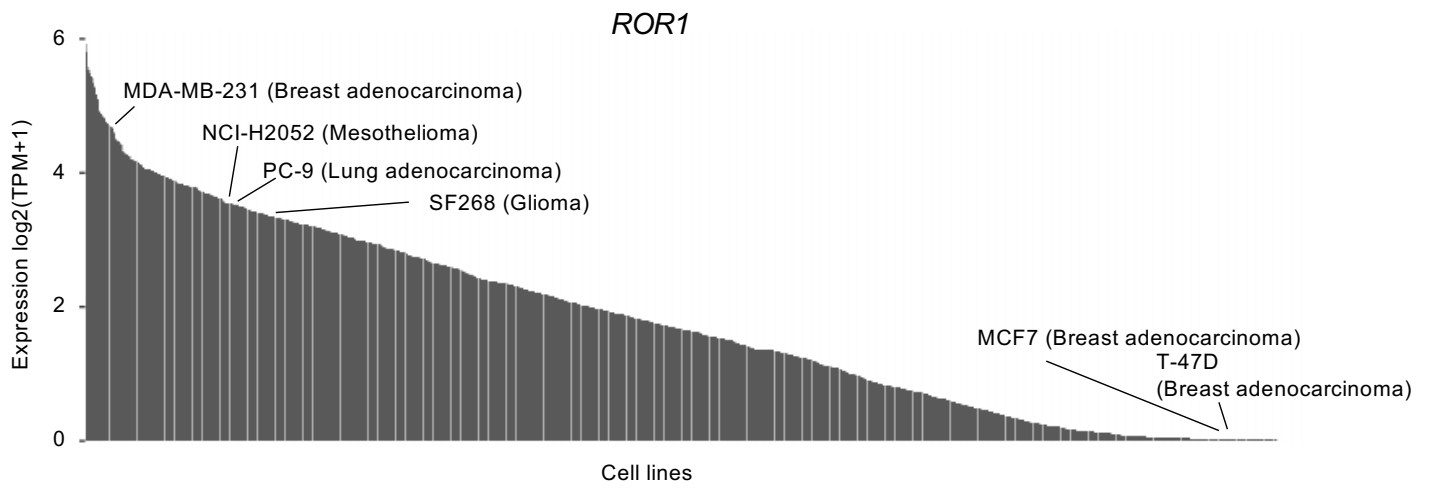
Appendix Figure S1. Schematic diagram for the generation of single-cell RNA sequencing data. Representative FACS plots of the S2-VP10 xenograft are shown. The sorted population did not include dead and duplicate cells. Human and mouse cells were distinguished by data analysis using Cell Ranger and Seurat.



Appendix Figure S2. Gating scheme for the isolation of ROR1^{high} and ROR1^{low} cells from xenografts. The sorted population contained only single and viable human cancer cells.



Appendix Figure S3. Heatmap of H3K27ac CUT&RUN data on the genomic locations of the H3K4me1 peaks in S2-VP10 cells.



Appendix Figure S4. Bar plot of ROR1 expression in cell lines from the CCLE database.
Bar plot showing ROR1 expression of 1389 cell lines.