

MODERATE AND SEVERE HZ PAIN HAD A SUBSTANTIAL IMPACT ON ALL ASPECTS OF HEALTH-RELATED QUALITY OF LIFE AND ACTIVITIES OF DAILY LIVING ACROSS AGE AND IMMUNOSUPPRESSION.

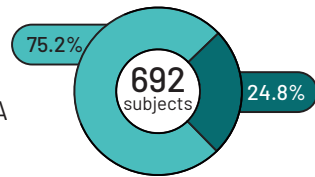
THE STUDY

- * Describes the impact of Herpes Zoster (HZ) pain on Health-related Quality of Life (HRQoL) and activities of daily living (ADL) in a non-vaccinated population (placebo groups) from three multinational phase III randomized trials.
- * HZ pain and impact on ADL's assessed by the Zoster Brief Pain Inventory (ZBPI) questionnaire, completed daily for a minimum of 28 days from onset.
- * HRQoL was assessed using two standard questionnaires, the Short Form Health Survey (SF-36) and the EuroQoL EQ-5D completed weekly from onset of HZ symptoms.

SURVEYED POPULATION

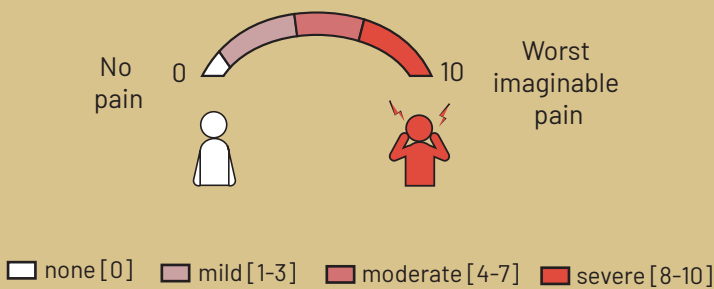
Subjects who experienced a HZ episode in the placebo groups:

- Immunocompetent subjects ≥ 50 years of age (YOA)
- Autologous Hematopoietic Stem Cell Transplantation (HSCT) recipients ≥ 18 YOA



RESULTS

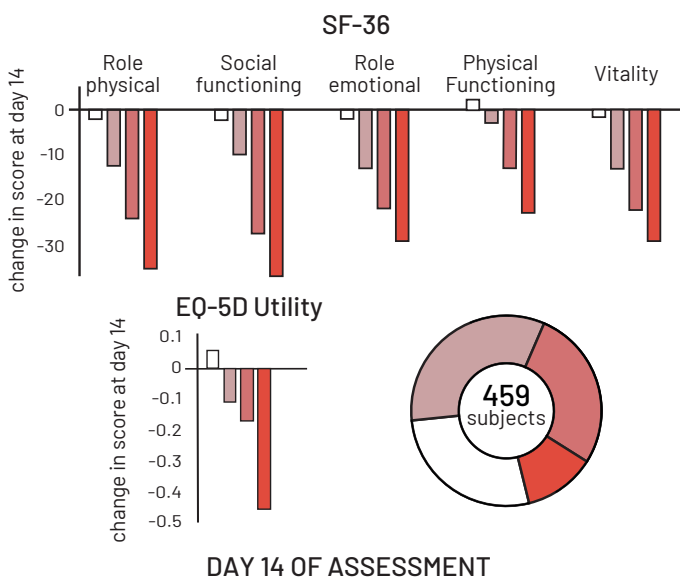
ZBPI score



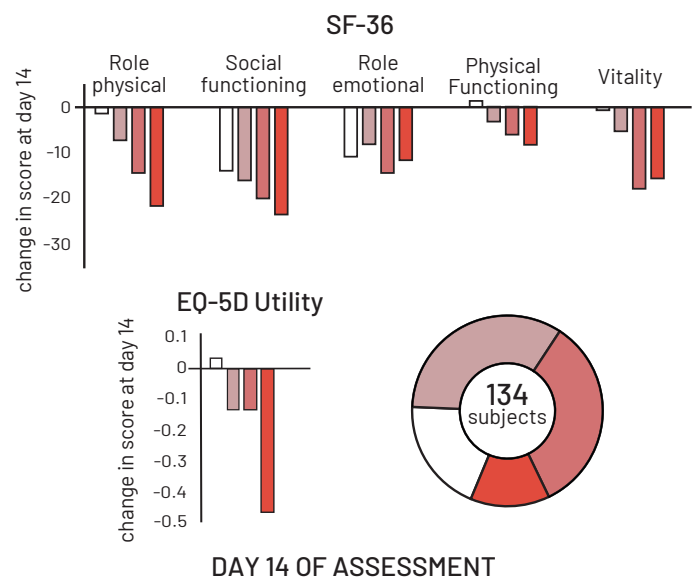
Selected assessed domains

- ROLE PHYSICAL:** Scale assessing the difficulty of performing work or other usual activities as a result of physical problems.
- SOCIAL FUNCTIONING:** Scale assessing the impact of either physical or emotional problems on social activities.
- ROLE EMOTIONAL:** Scale assessing the impact on the ability to carry out work or activities of daily living due to emotional problems.
- PHYSICAL FUNCTIONING:** Scale assessing both severe and minor physical limitations.
- VITALITY:** Scale measuring general energy levels, and feelings of tiredness.

Immunocompetent ≥ 50 YOA



HSCT ≥ 18 YOA



All SF-36 and EQ-5D domain scores show a significant relationship between increased HZ pain and worsening HRQoL. Our analysis also showed the impact of increasing HZ pain on ADL as measured by the ZBPI.



AN ANALYSIS OF HOW HZ PAIN AFFECTS HEALTH RELATED QUALITY OF LIFE OF PLACEBO SUBJECTS FROM THREE RANDOMIZED PHASE III STUDIES.