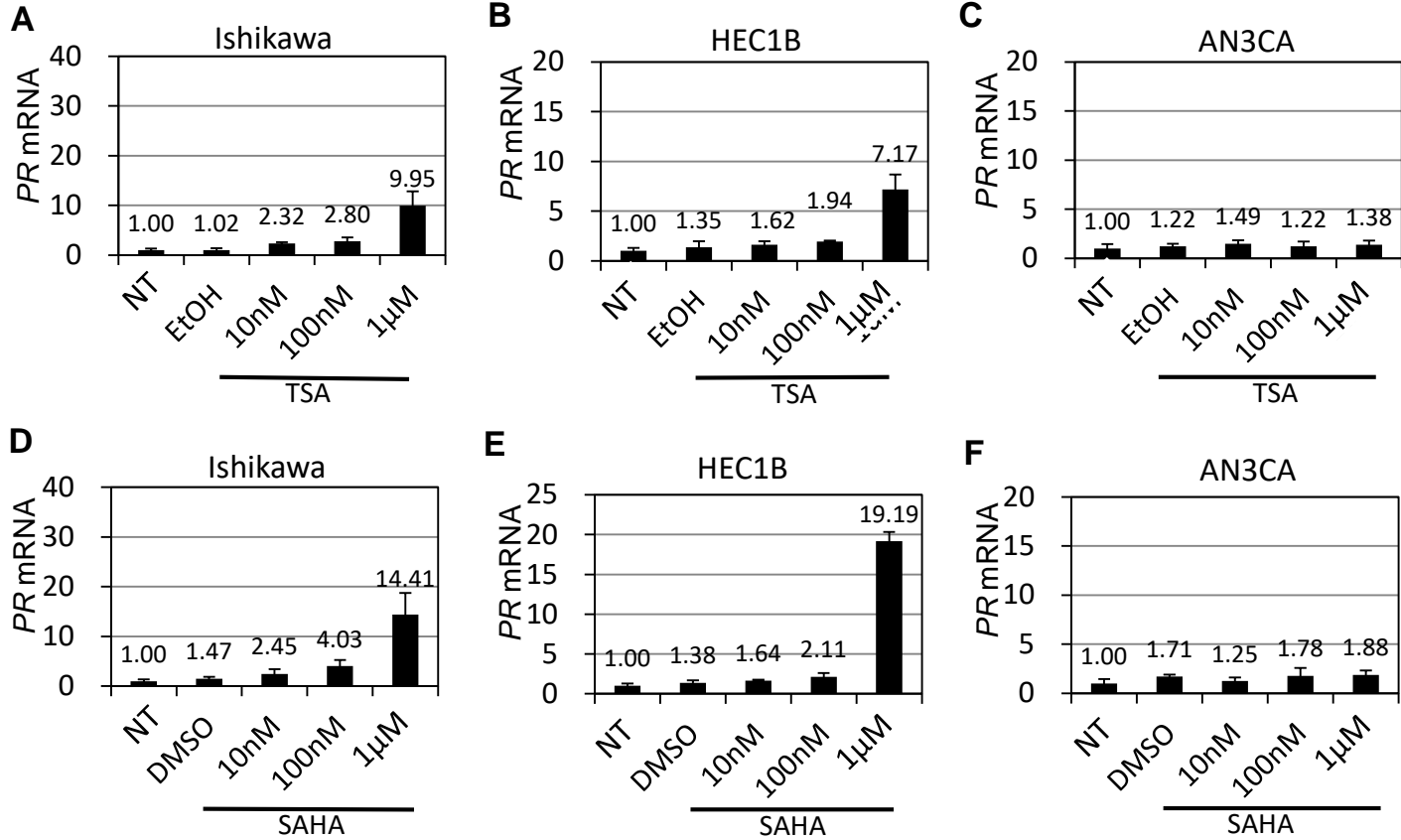


Supplementary figure 3



A-C: Effects of TSA on the expression of *PR* mRNA in Ishikawa (**A**), HEC1B (**B**), and AN3CA (**C**) cells examined by RT-PCR. **D-E:** Effects of SAHA on the expression of *PR* mRNA in Ishikawa (**D**), HEC1B (**E**), and AN3CA (**F**) cells. Cells were harvested at 24 hours after the treatment. NT: no treatment, EtOH: treated with ethanol (solvent of TSA), DMSO: treated with DMSO (solvent of SAHA).