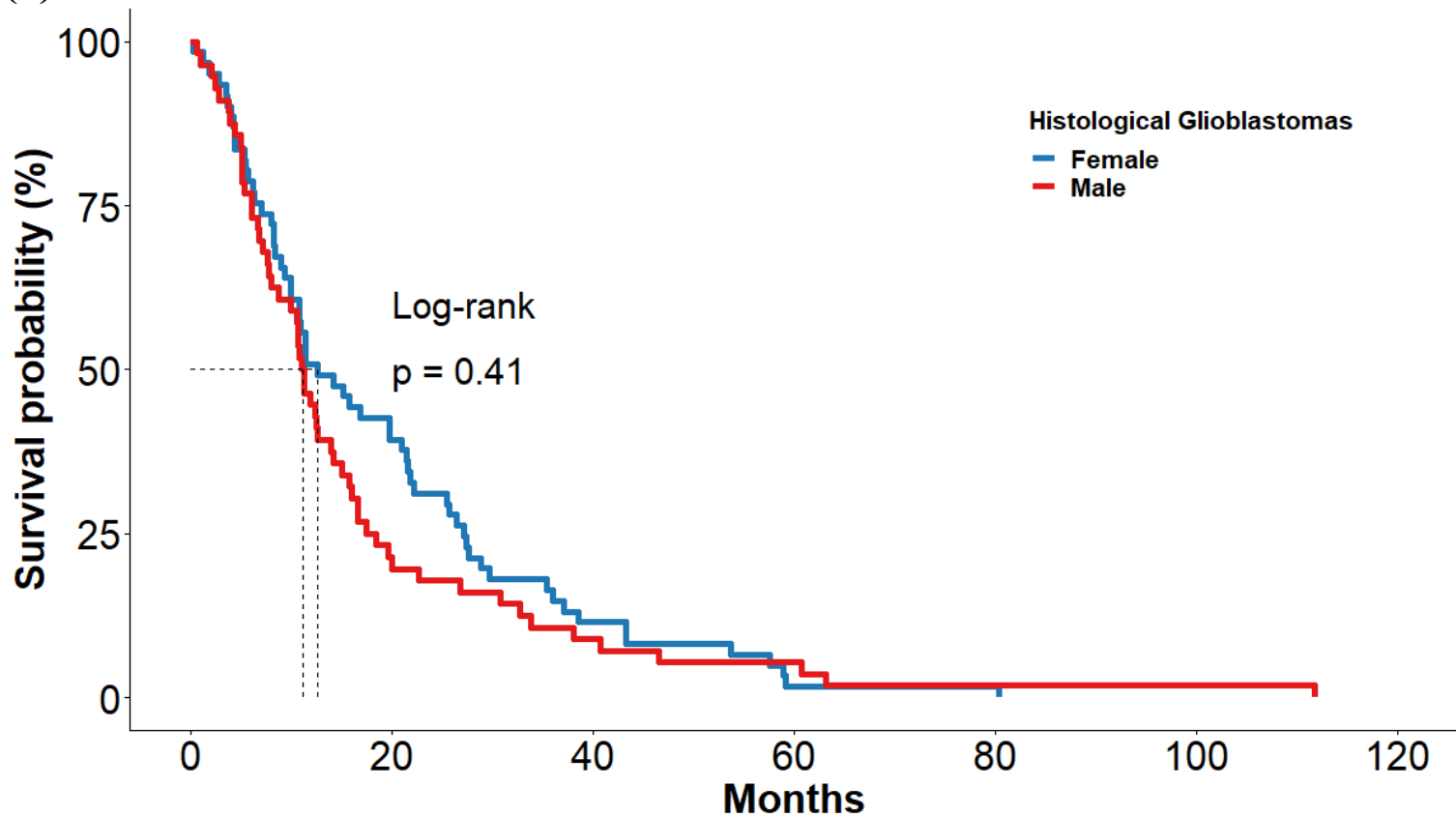


Supplementary Figure 2. Kaplan–Meier curves showing no significant effects of certain genetic and immunohistochemical alterations on the overall survival of patients with histological glioblastomas (1-30). Since the numbers of patients divided into two groups (e.g. FGFR1 Wildtype/FGFR1 Alteration) using different parameters varied, we only enrolled the parameters using which the number of patients in either group was above 3. Parameters used in this section were shown as follows.

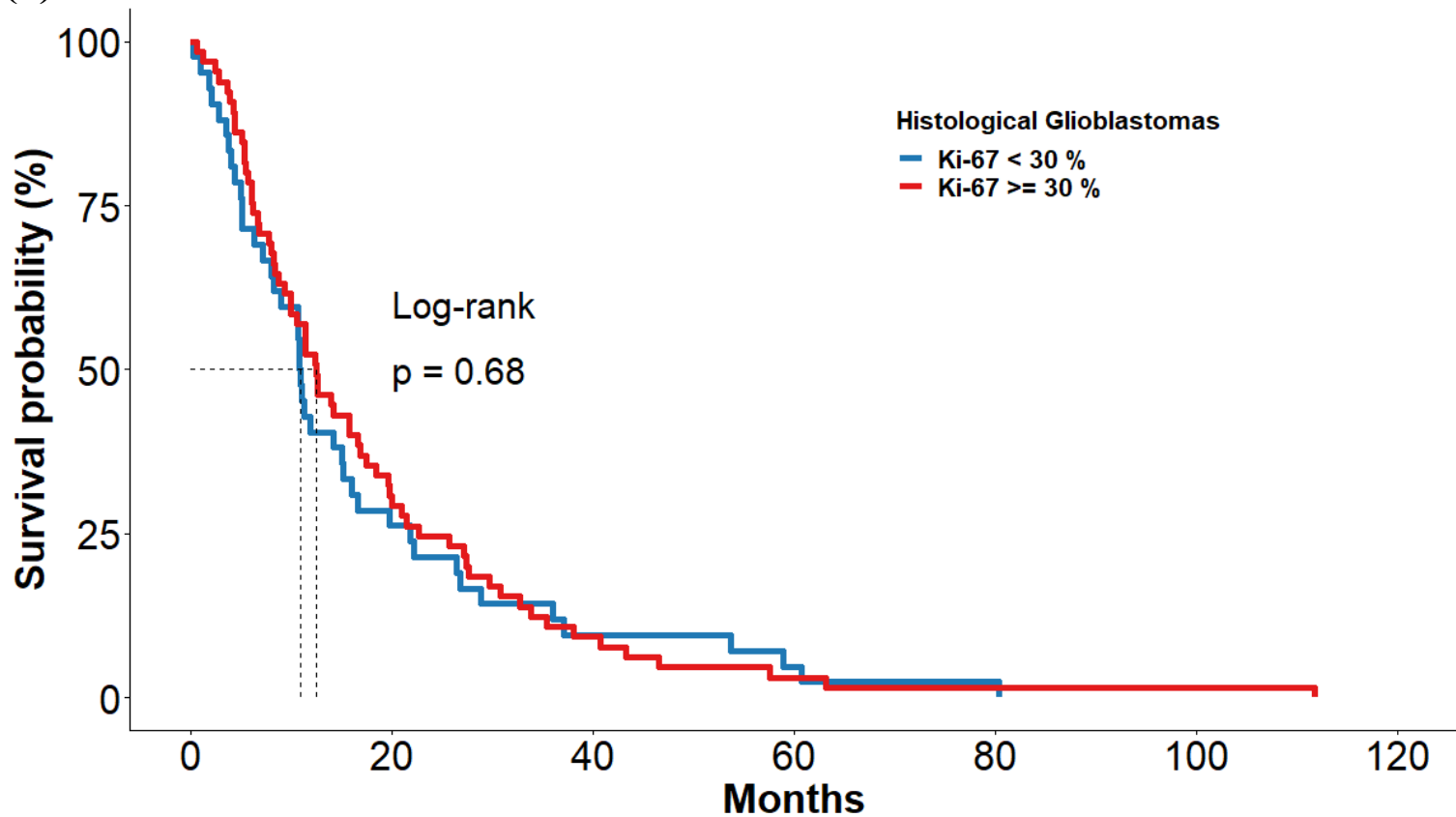
(1)	Sex.....	1
(2)	Ki-67	2
(3)	ATRX	3
(4)	TP53	4
(5)	Oligo2.....	5
(6)	NeuN	6
(7)	Syn	7
(8)	TERT promotor mutation	8
(9)	EGFR Amplification	9
(10)	CDKN2A/B homozygous deletion.....	10
(11)	BRAF	11
(12)	CDK4	12
(13)	FGFR1.....	13
(14)	FGFR3	14
(15)	FGFR4	15
(16)	KIT	16
(17)	MET	17
(18)	MYC.....	18
(19)	MYCN.....	19
(20)	NF1.....	20
(21)	NOTCH1	21
(22)	NTRK2.....	22
(23)	NTRK3.....	23
(24)	PDGFRA	24
(25)	PEG3	25
(26)	PIK3CA.....	26
(27)	PPM1D	27
(28)	PTPN11	28
(29)	RB1	29
(30)	chr17.....	30

(1)



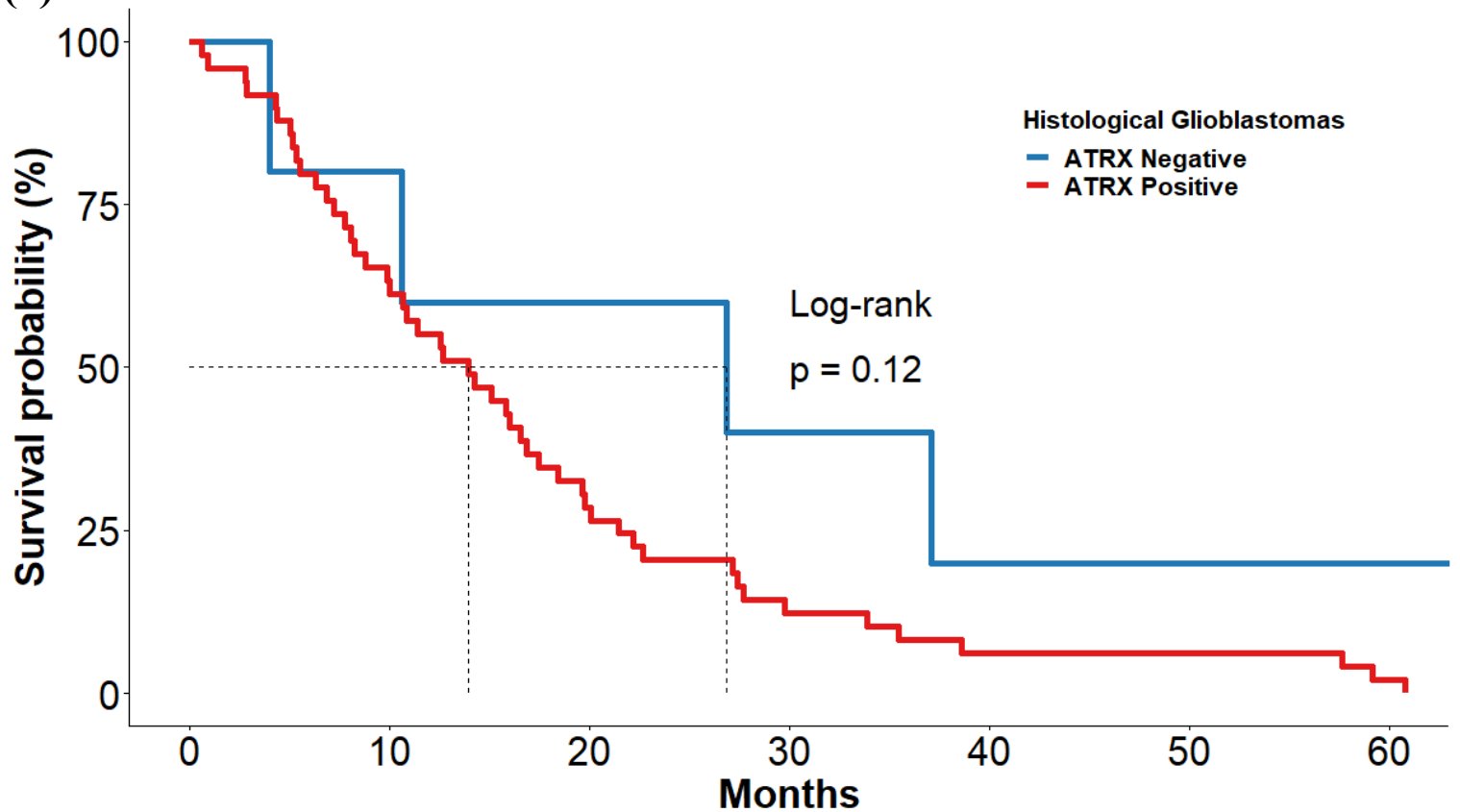
—	61	24	7	1	1	0	0
—	56	12	5	3	1	1	0

(2)



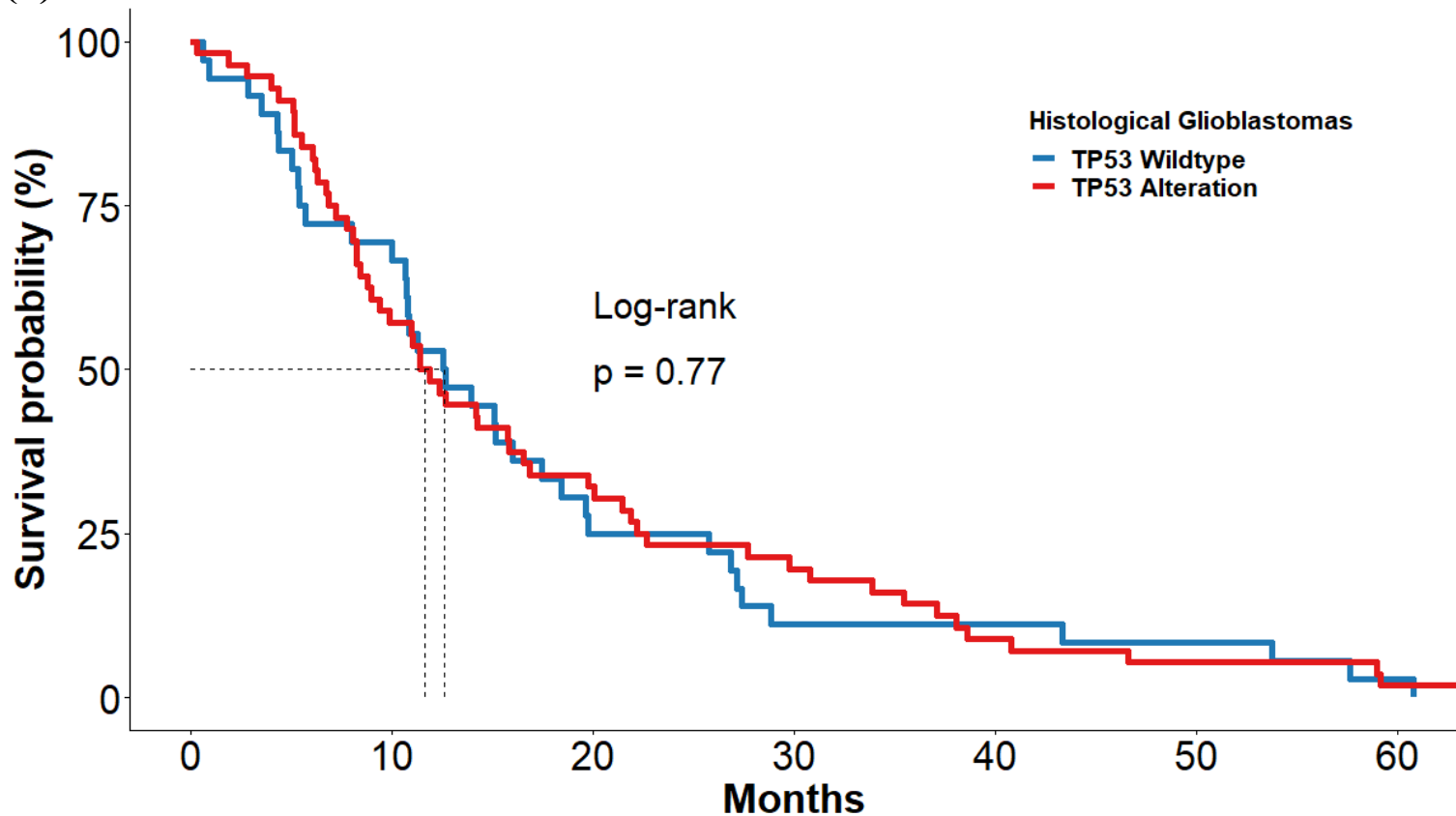
—	42	11	4	2	1	0	0
—	65	20	6	2	1	1	0

(3)



— 5 4 3 2 1 1 1
— 49 31 14 6 3 3 1

(4)



36

25

9

4

4

3

1

56

32

18

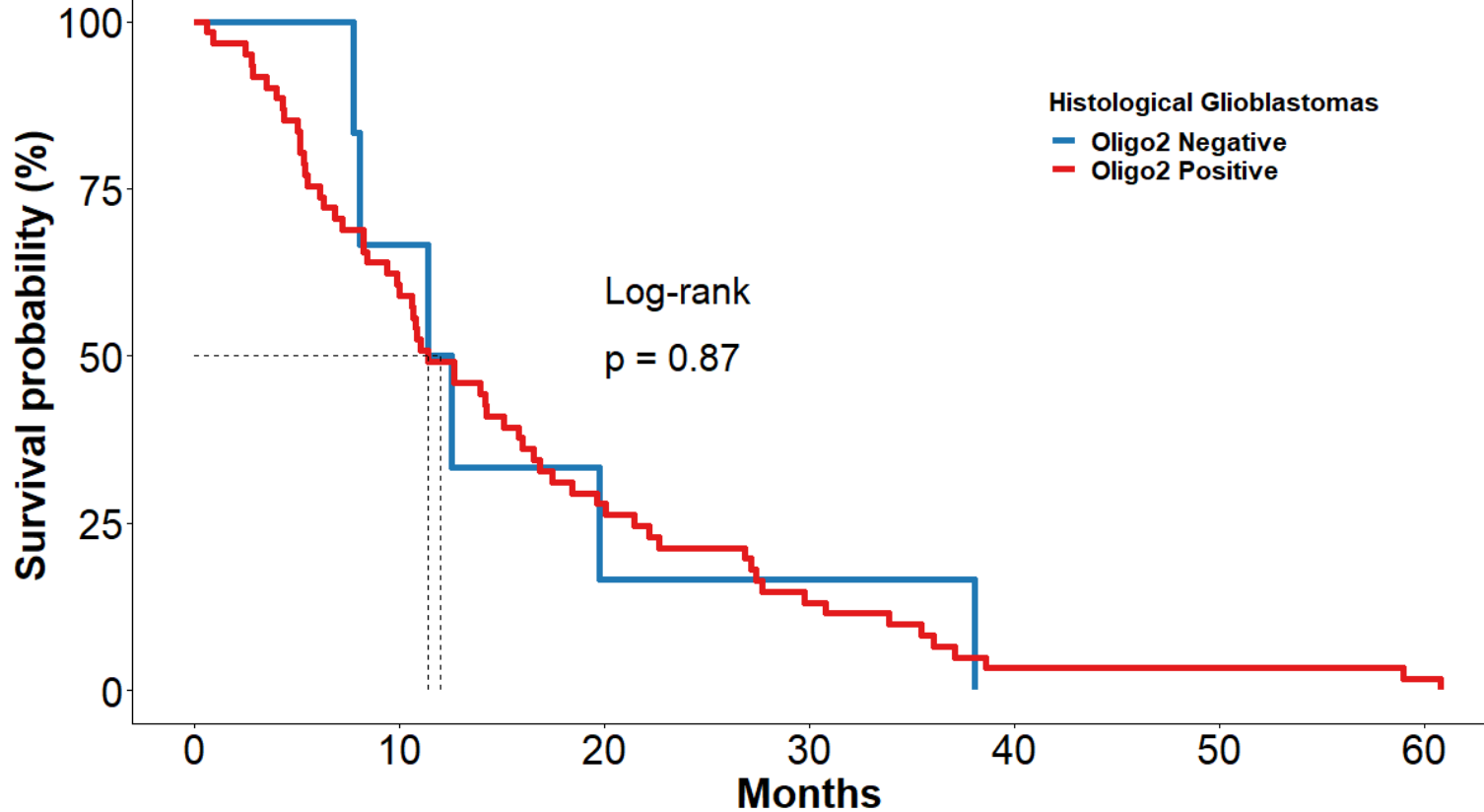
11

5

3

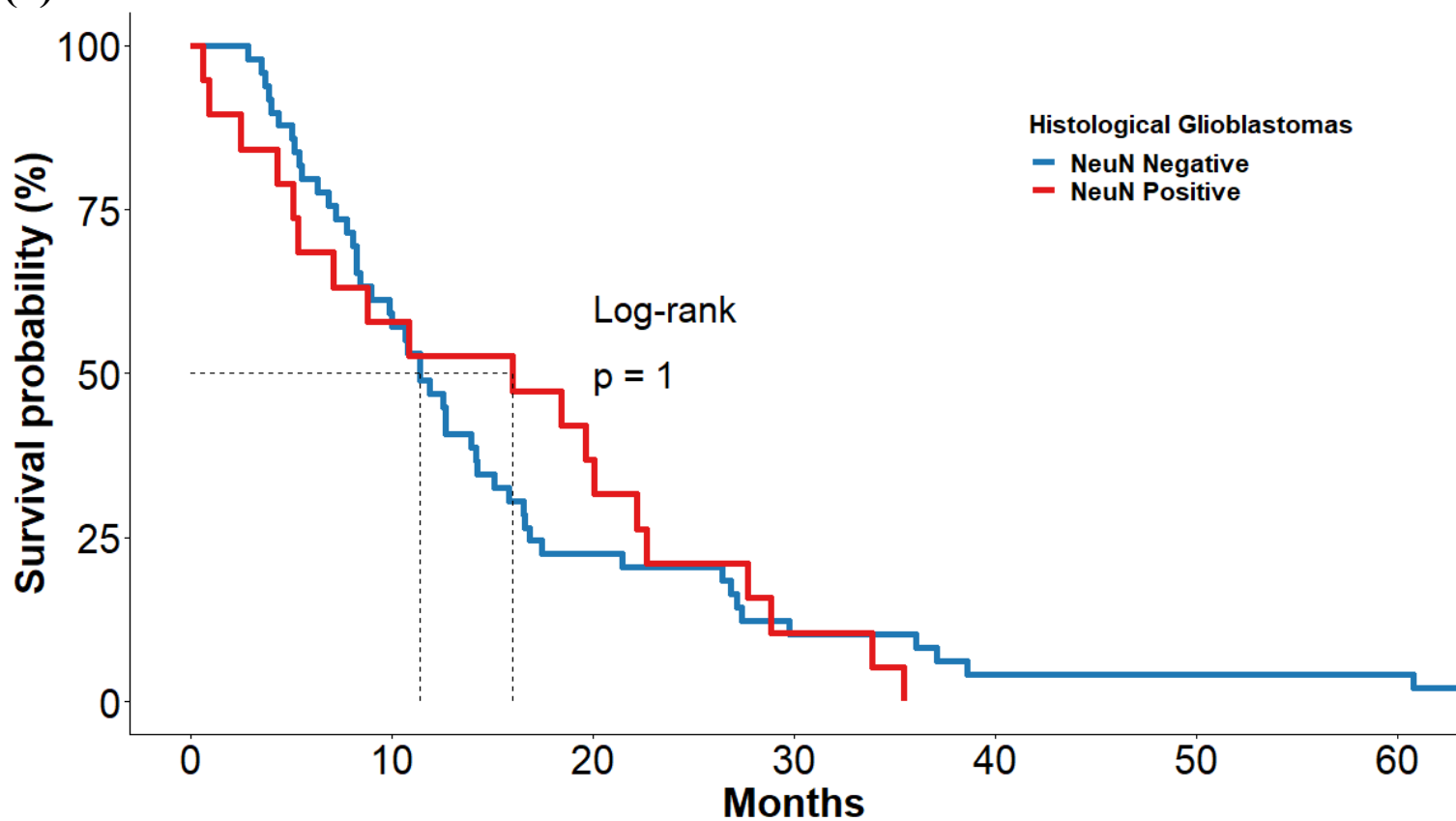
1

(5)



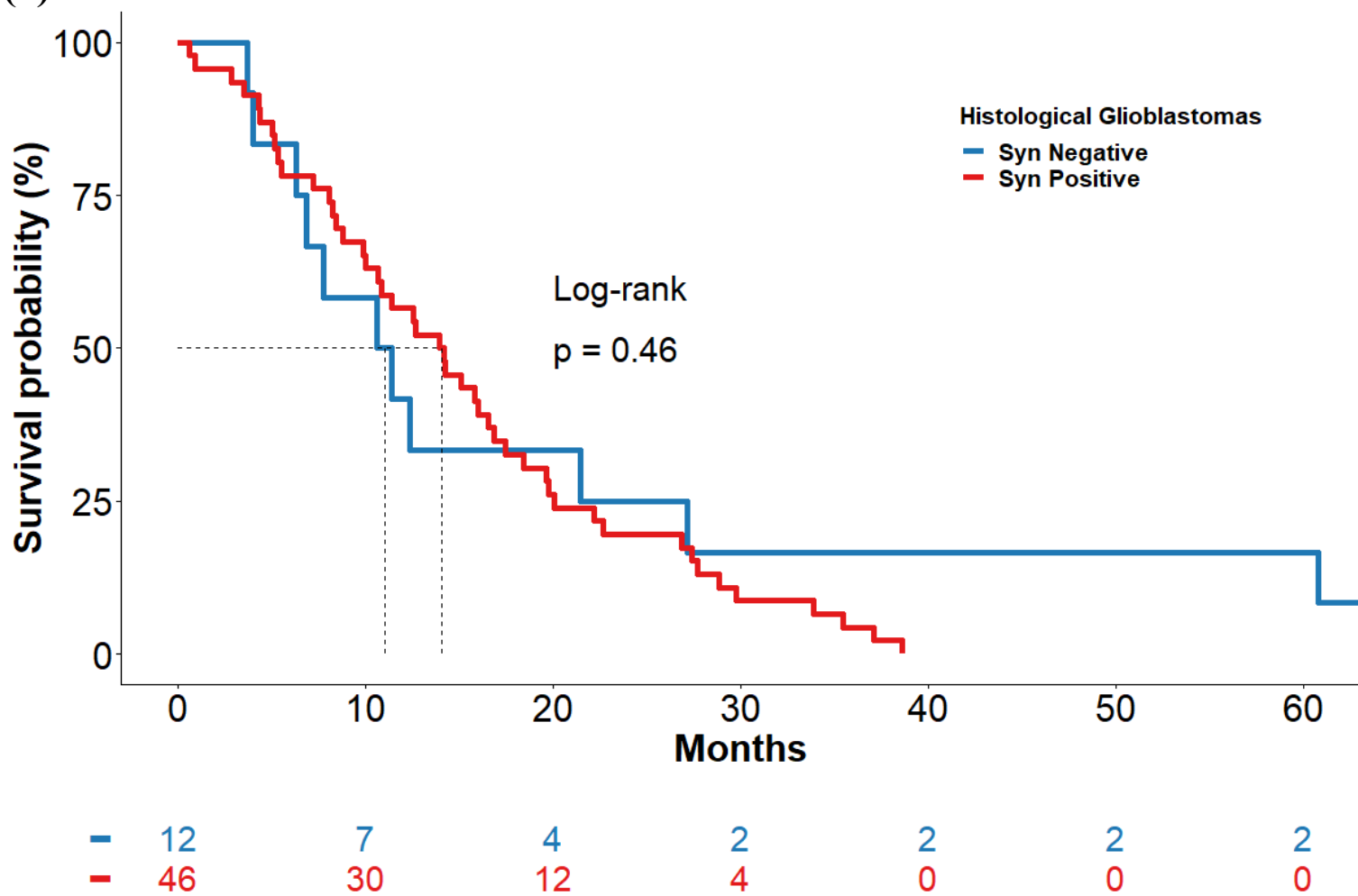
—	6	4	1	1	0	0	0
—	61	37	17	8	2	2	1

(6)

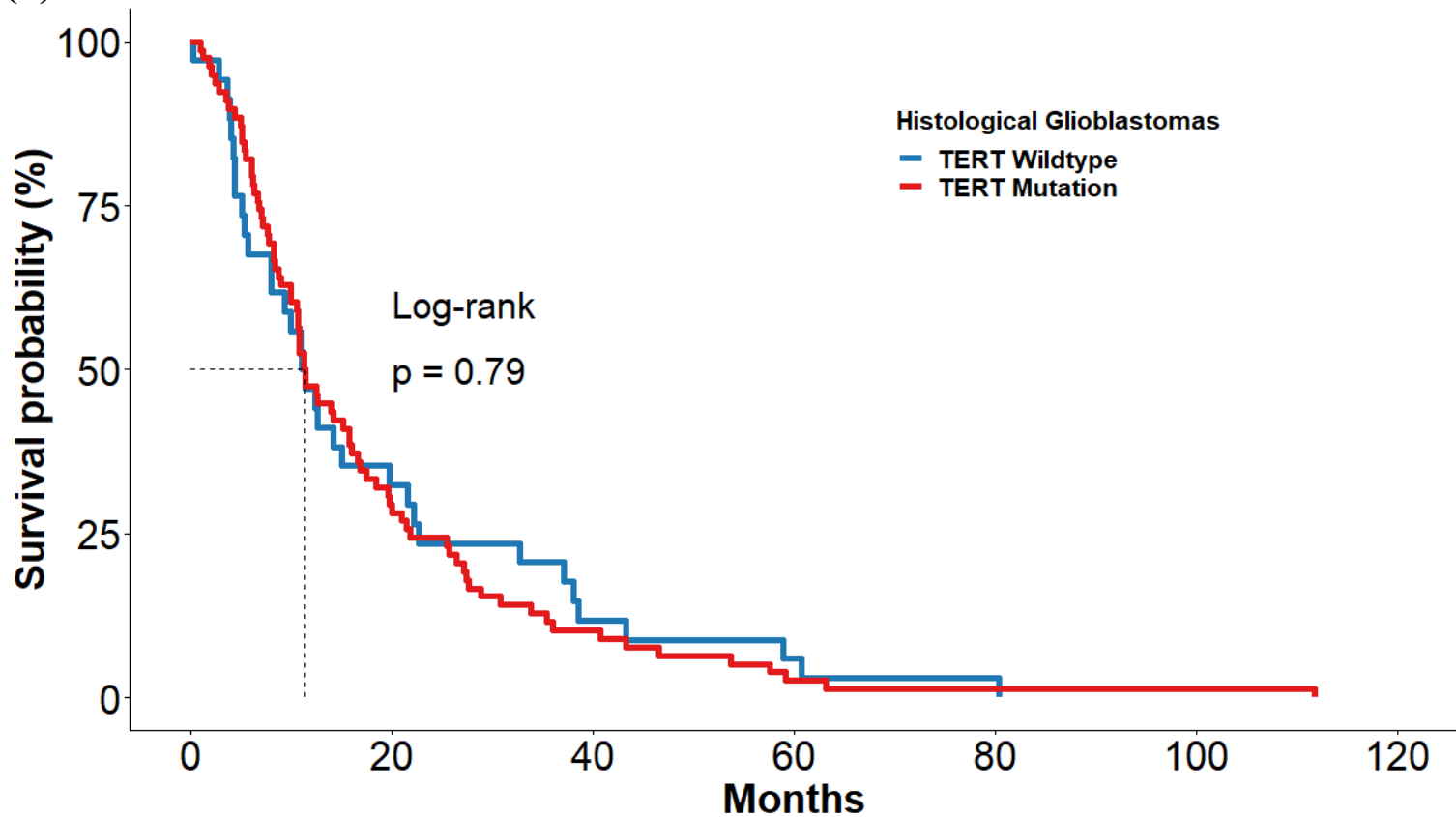


—	49	29	11	5	2	2	2
—	19	11	7	2	0	0	0

(7)

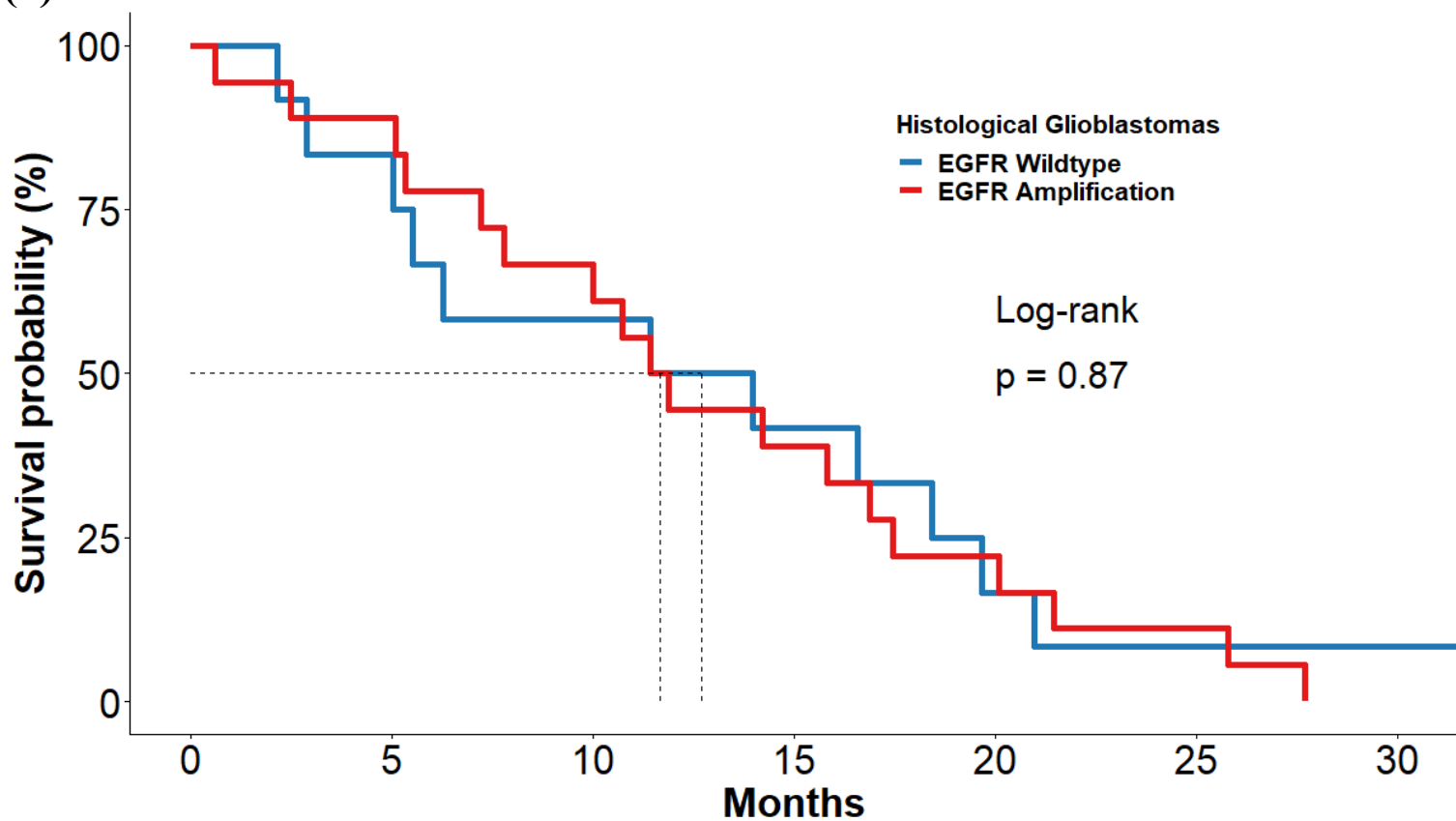


(8)



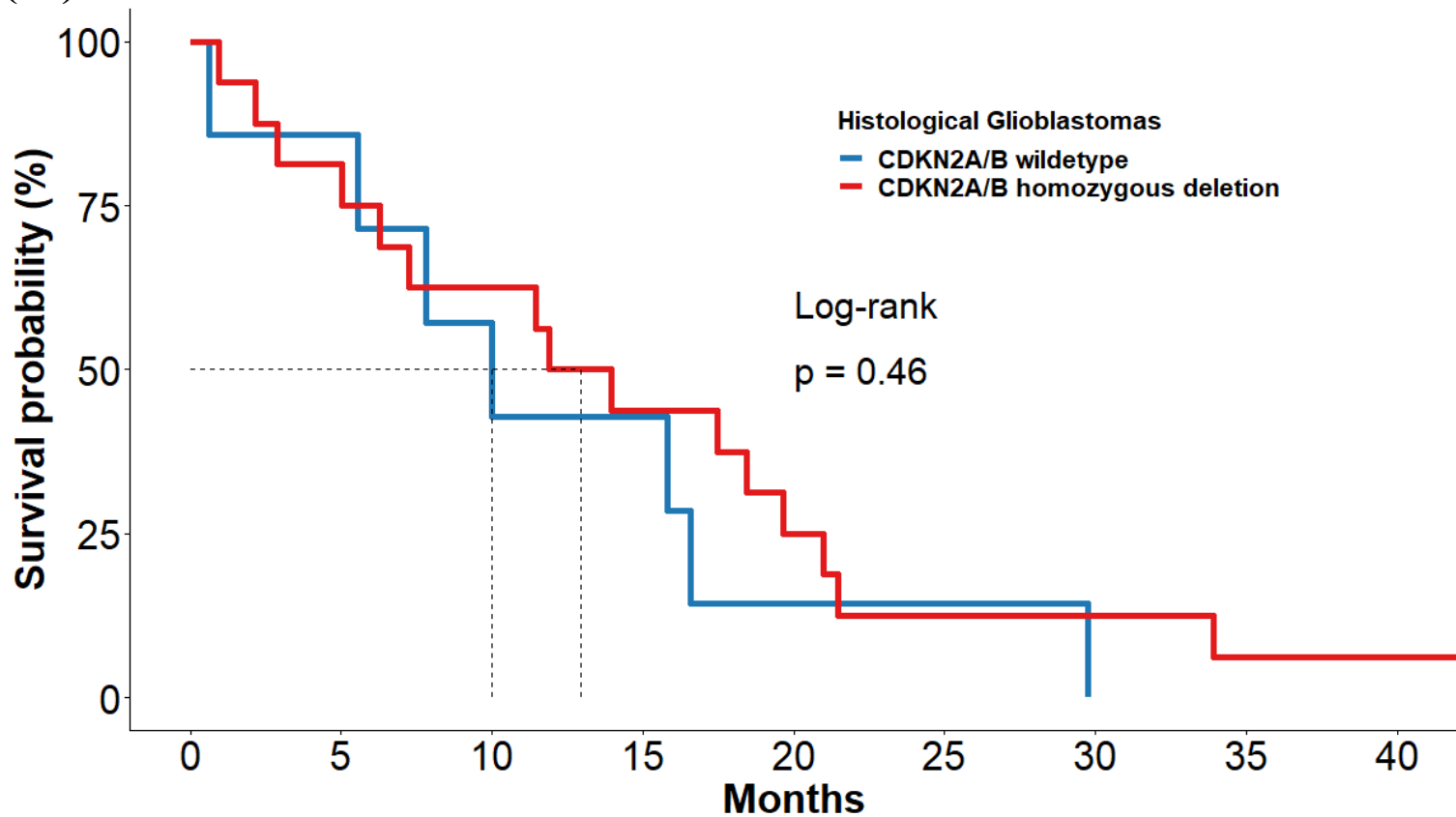
—	34	11	4	2	1	0	0
—	78	23	8	2	1	1	0

(9)



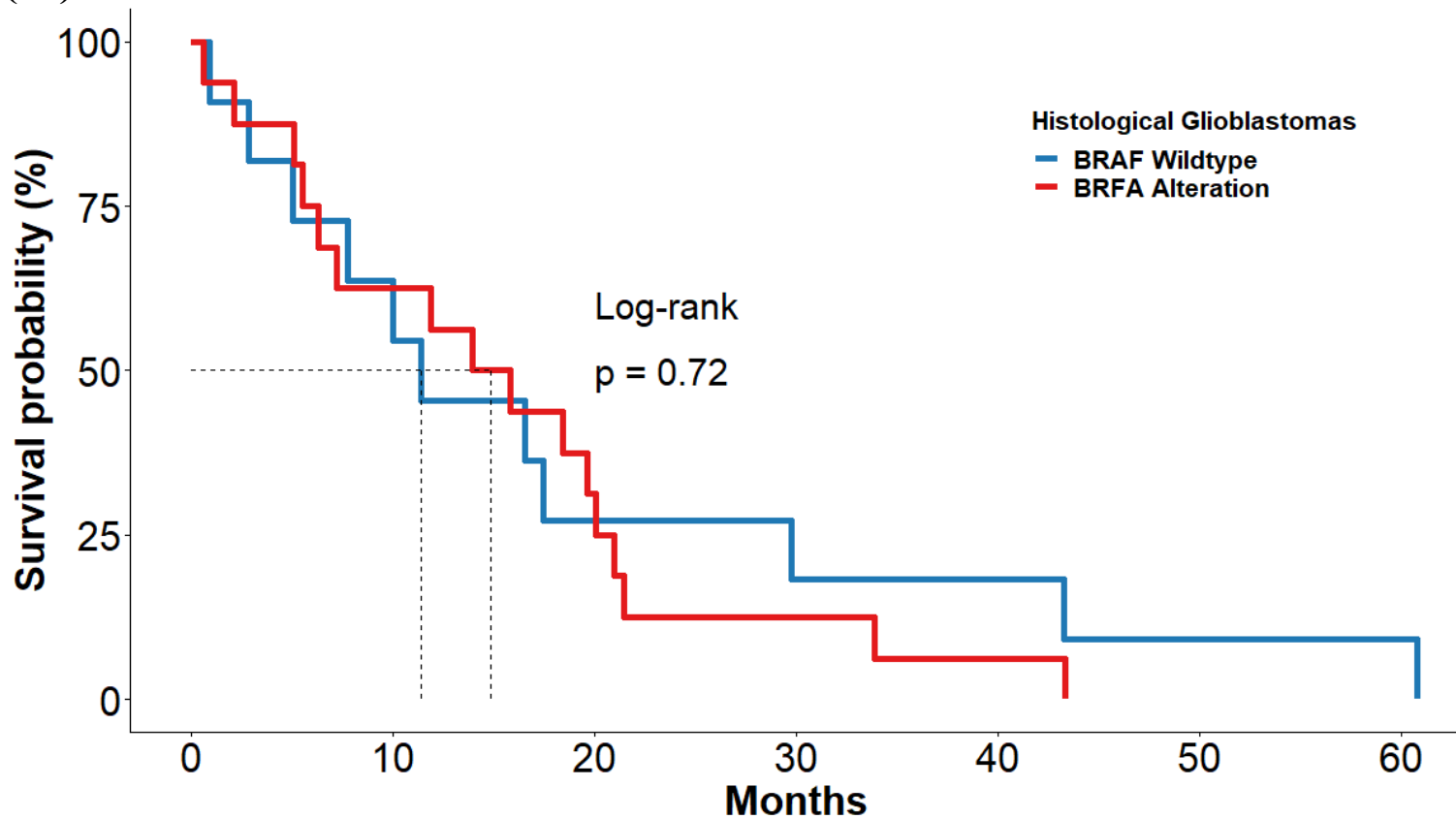
—	12	10	7	5	2	1	1
—	18	16	12	7	4	2	0

(10)



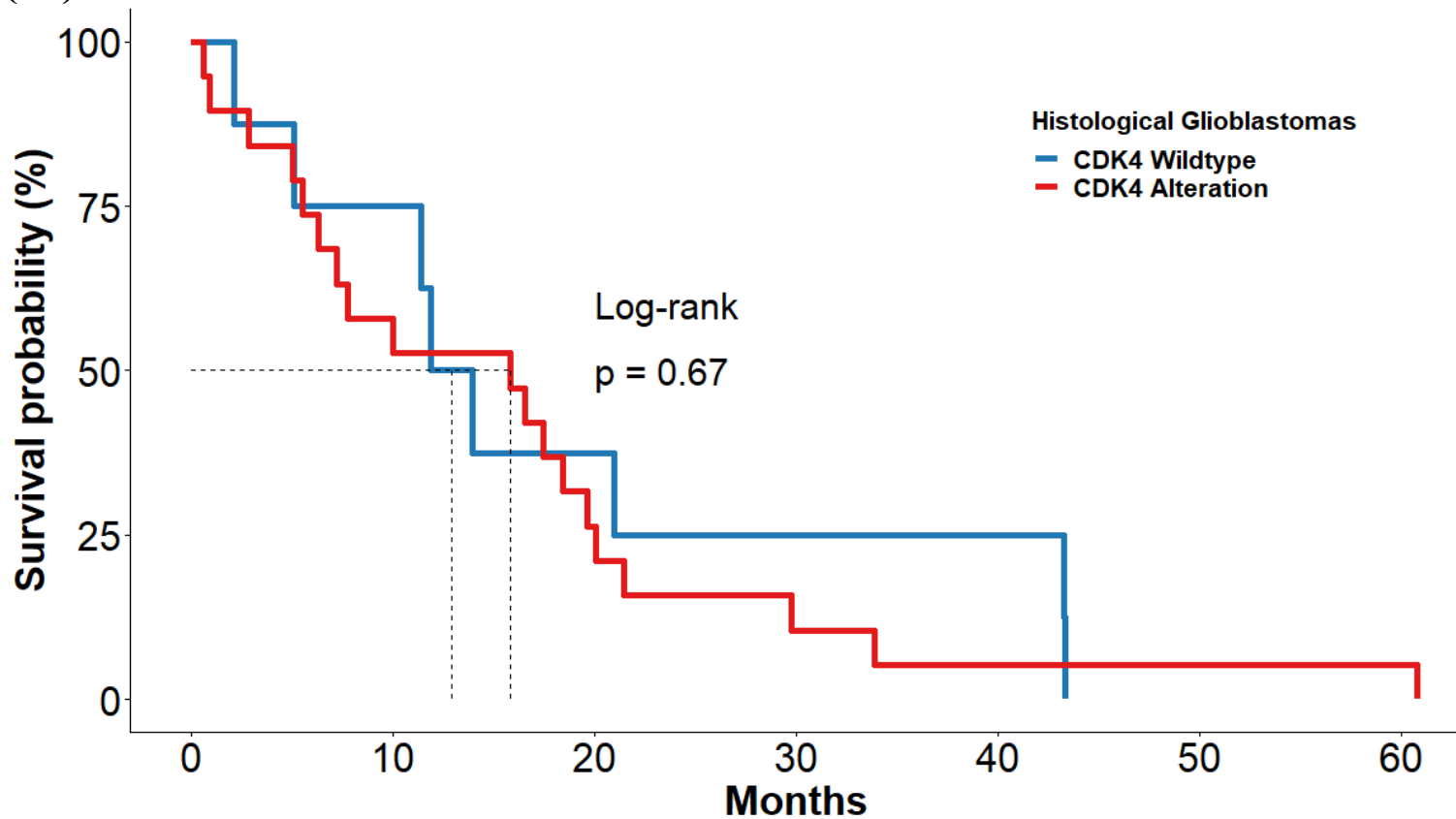
7	6	4	3	1	1	0	0	0
16	13	10	7	4	2	2	1	1

(11)



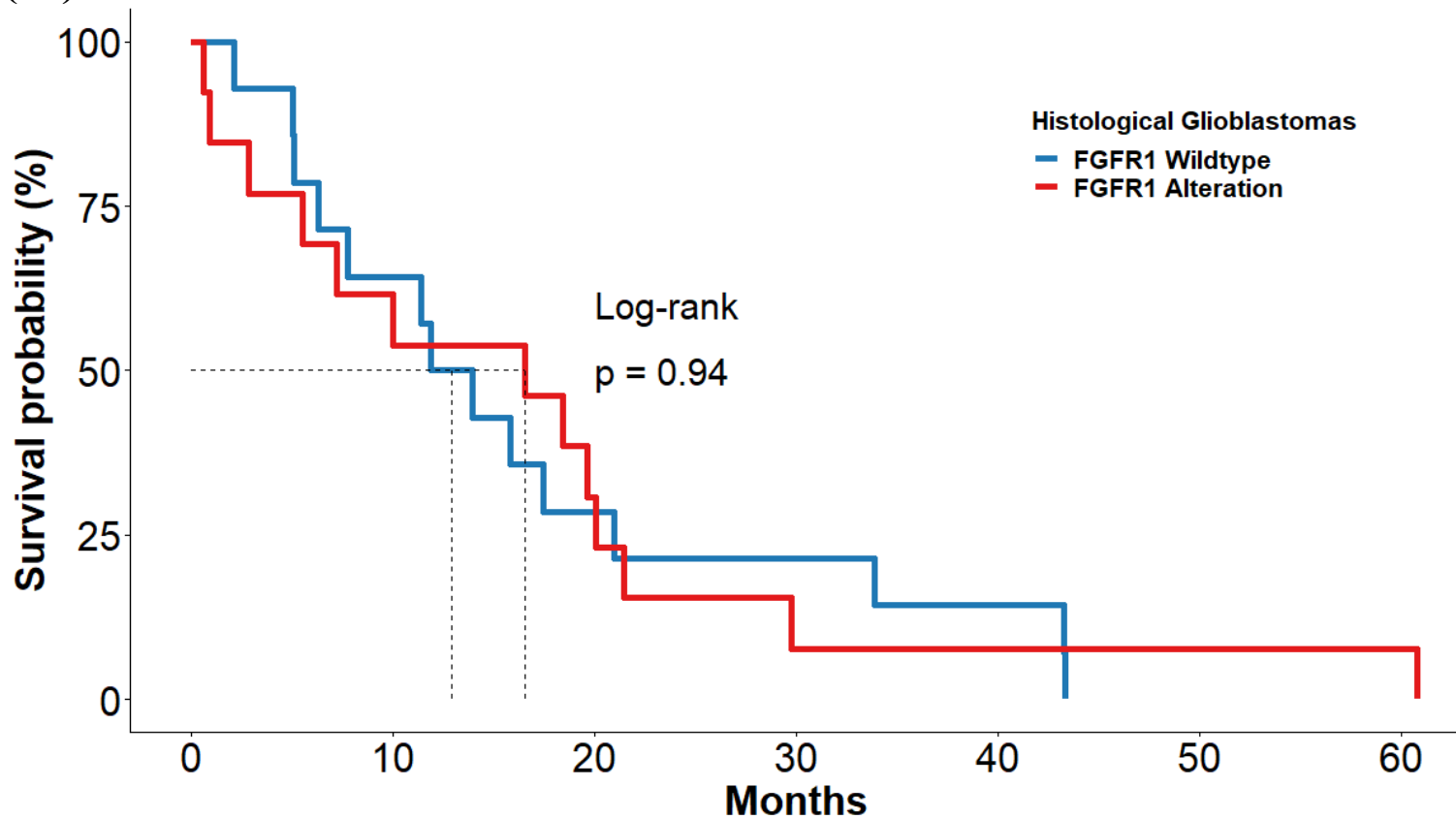
—	11	7	3	2	2	1	1
—	16	10	5	2	1	0	0

(12)



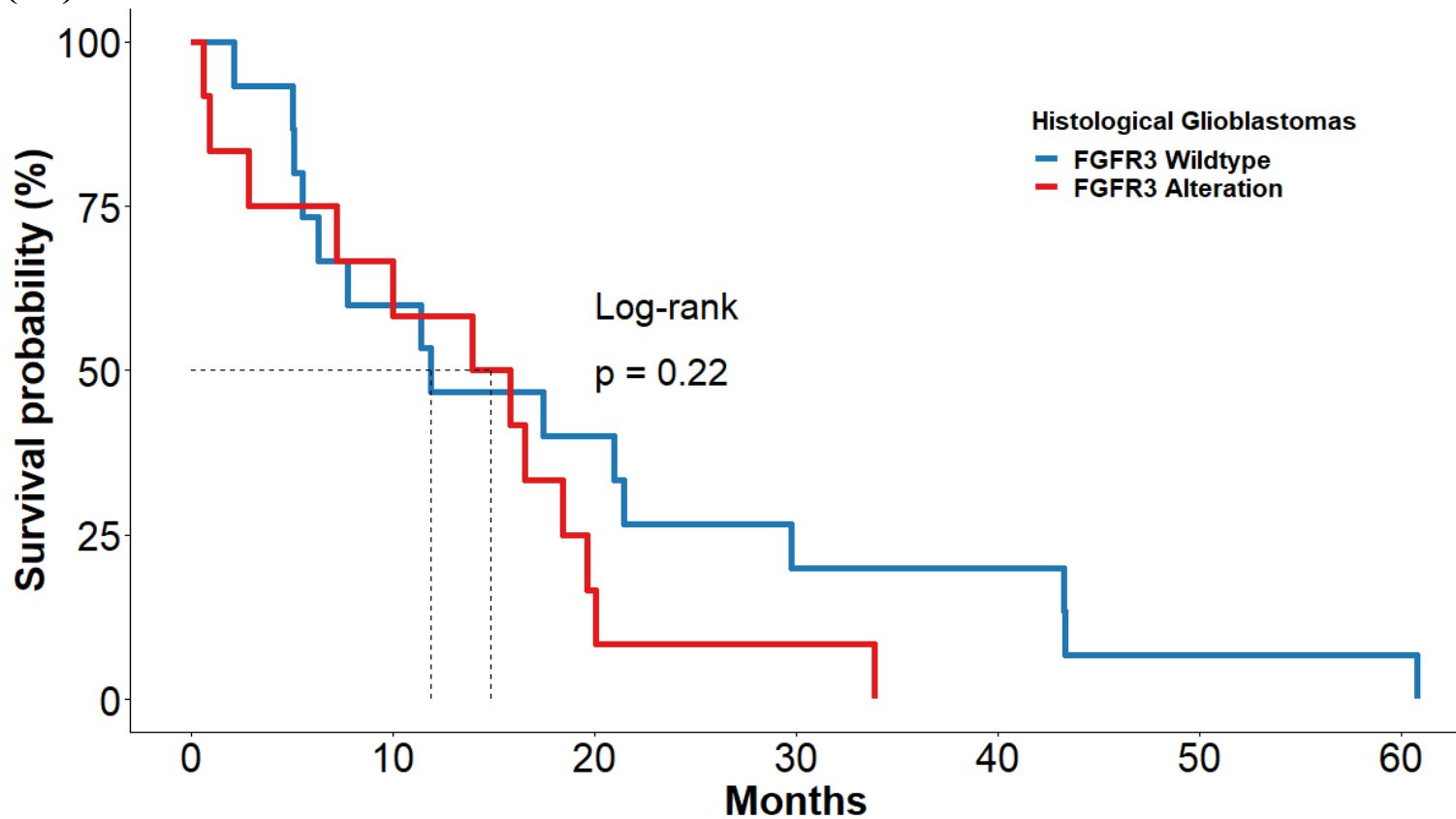
—	8	6	3	2	2	0	0
—	19	11	5	2	1	1	1

(13)



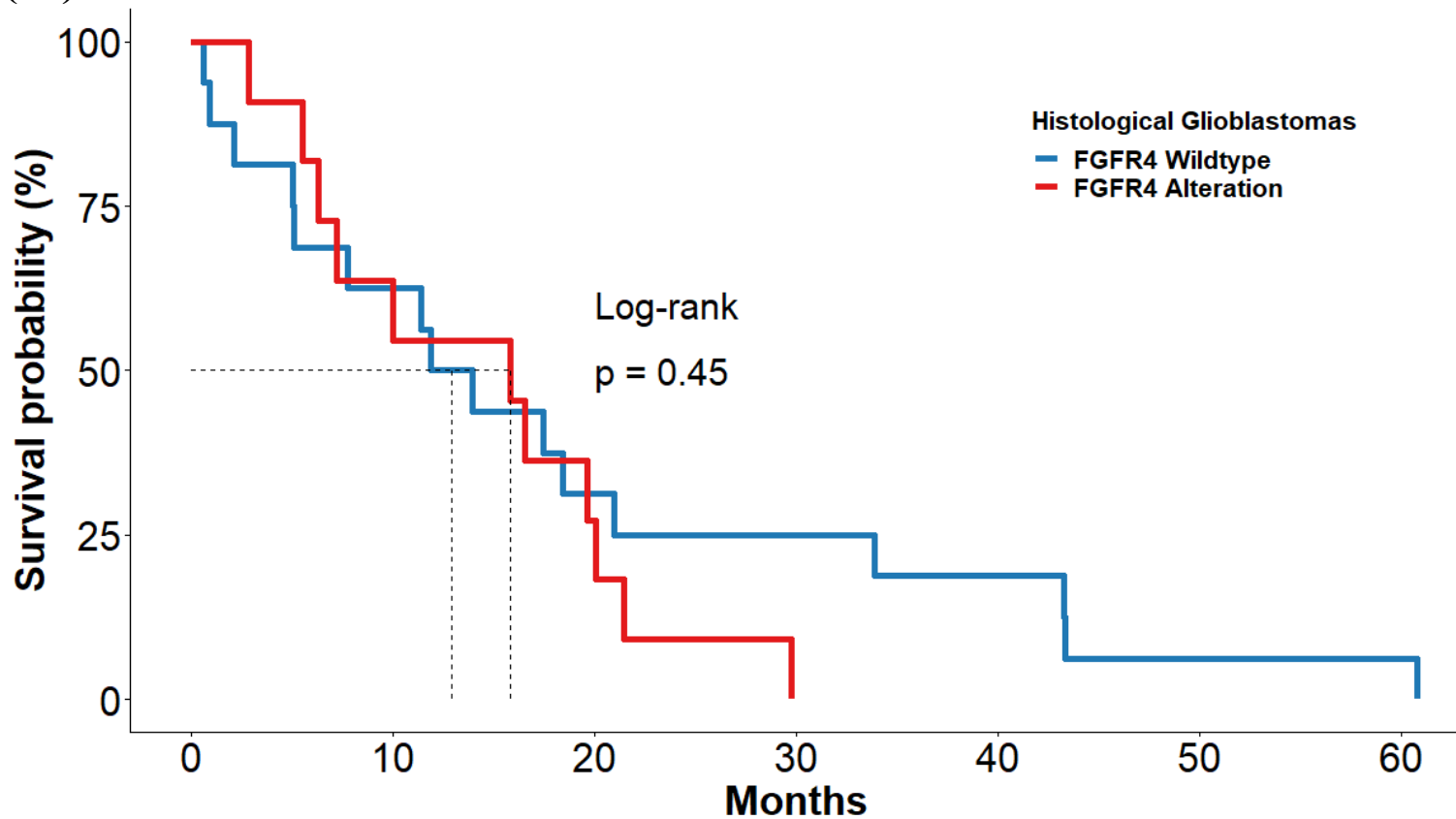
—	14	9	4	3	2	0	0
—	13	8	4	1	1	1	1

(14)



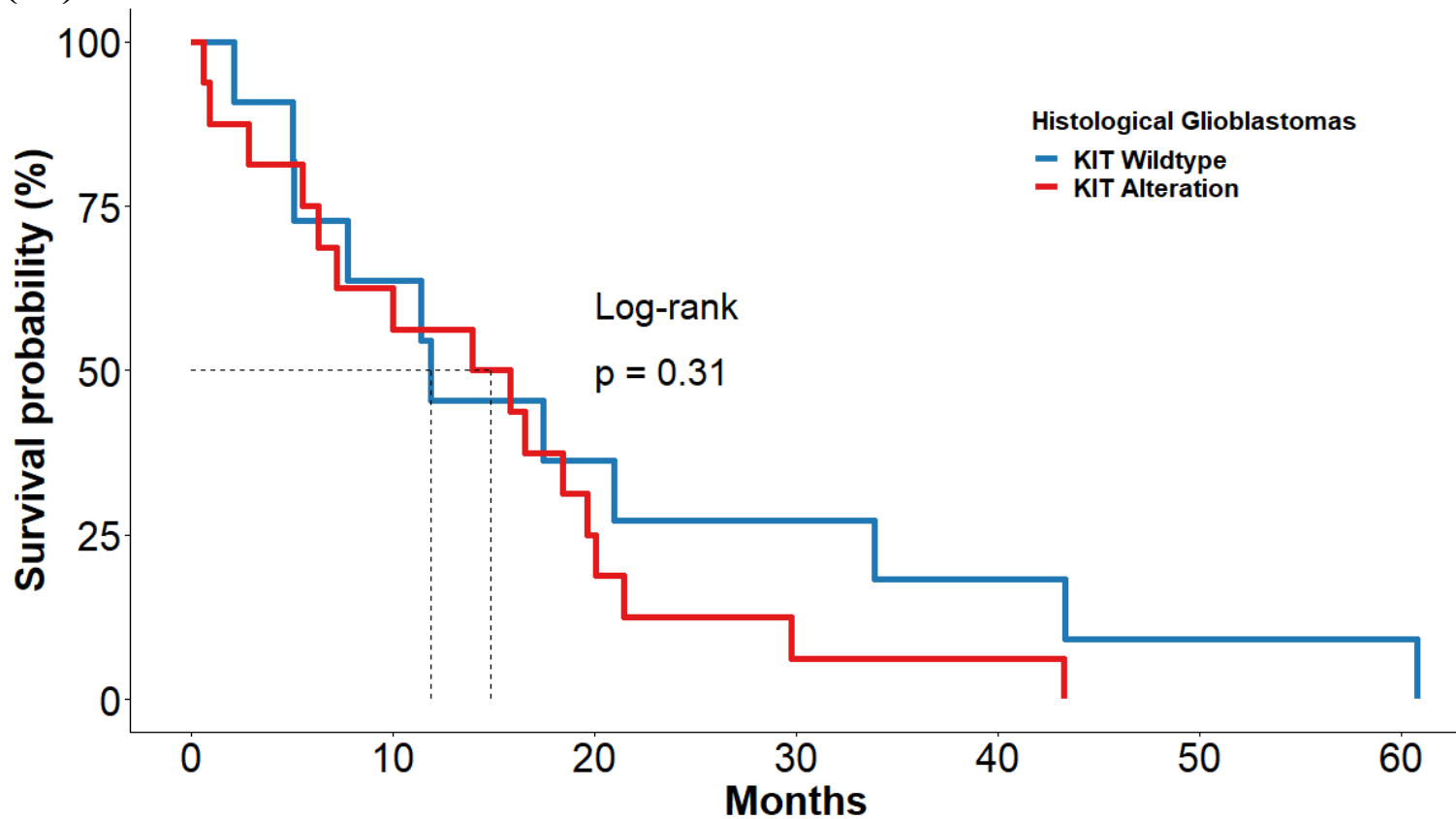
—	15	9	6	3	3	1	1
—	12	8	2	1	0	0	0

(15)



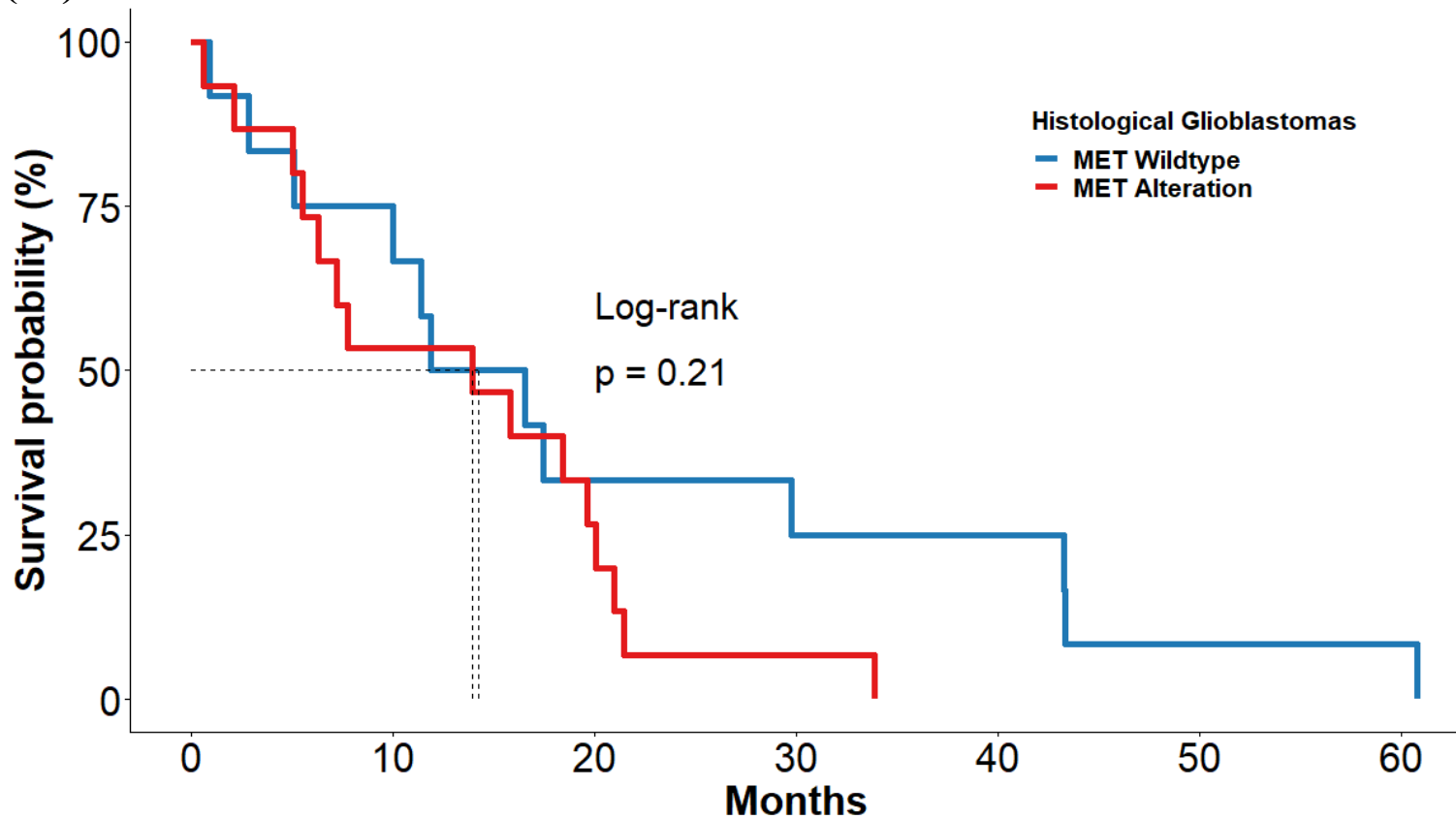
—	16	10	5	4	3	1	1
—	11	7	3	0	0	0	0

(16)



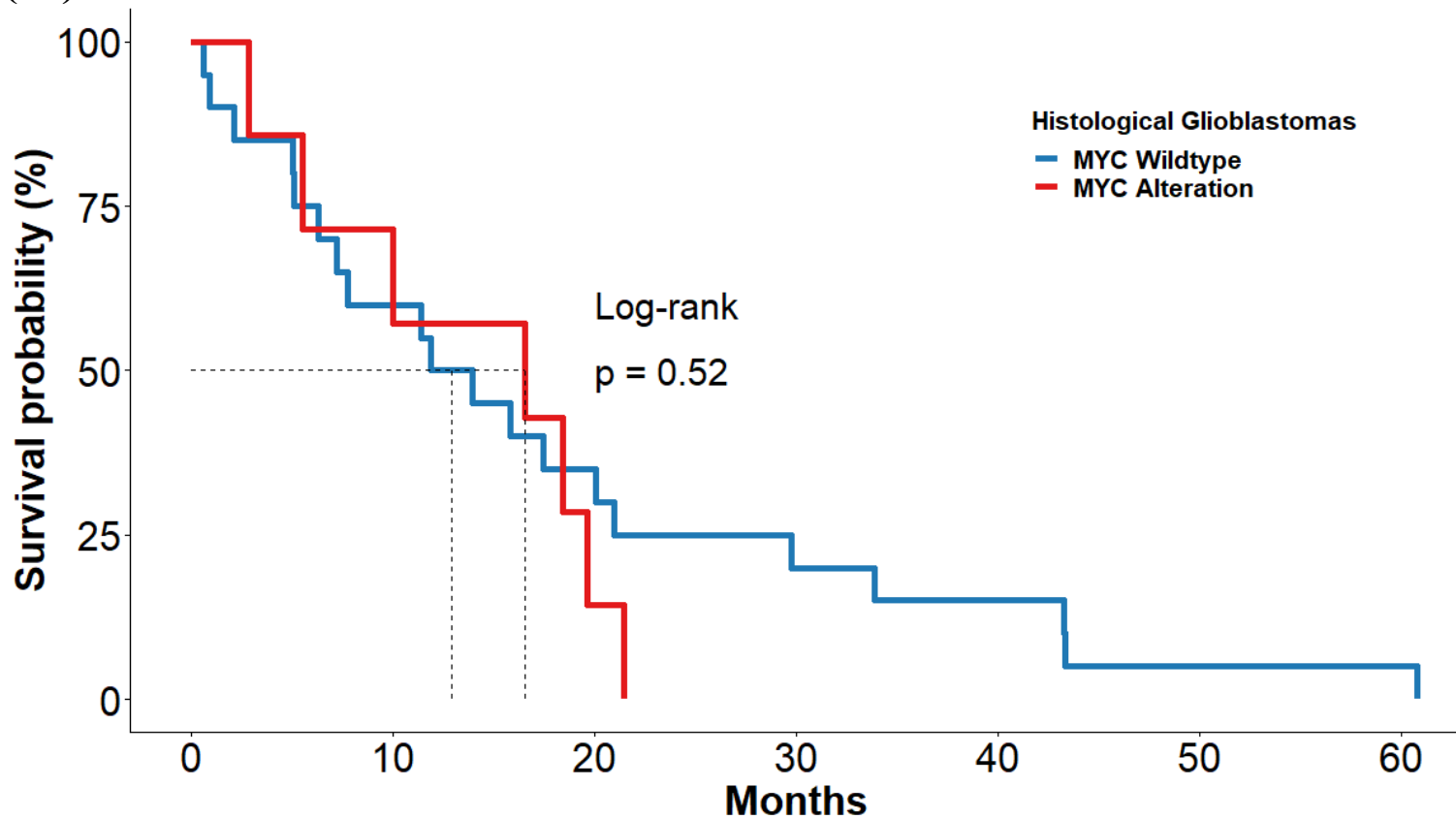
—	11	7	4	3	2	1	1
—	16	10	4	1	1	0	0

(17)



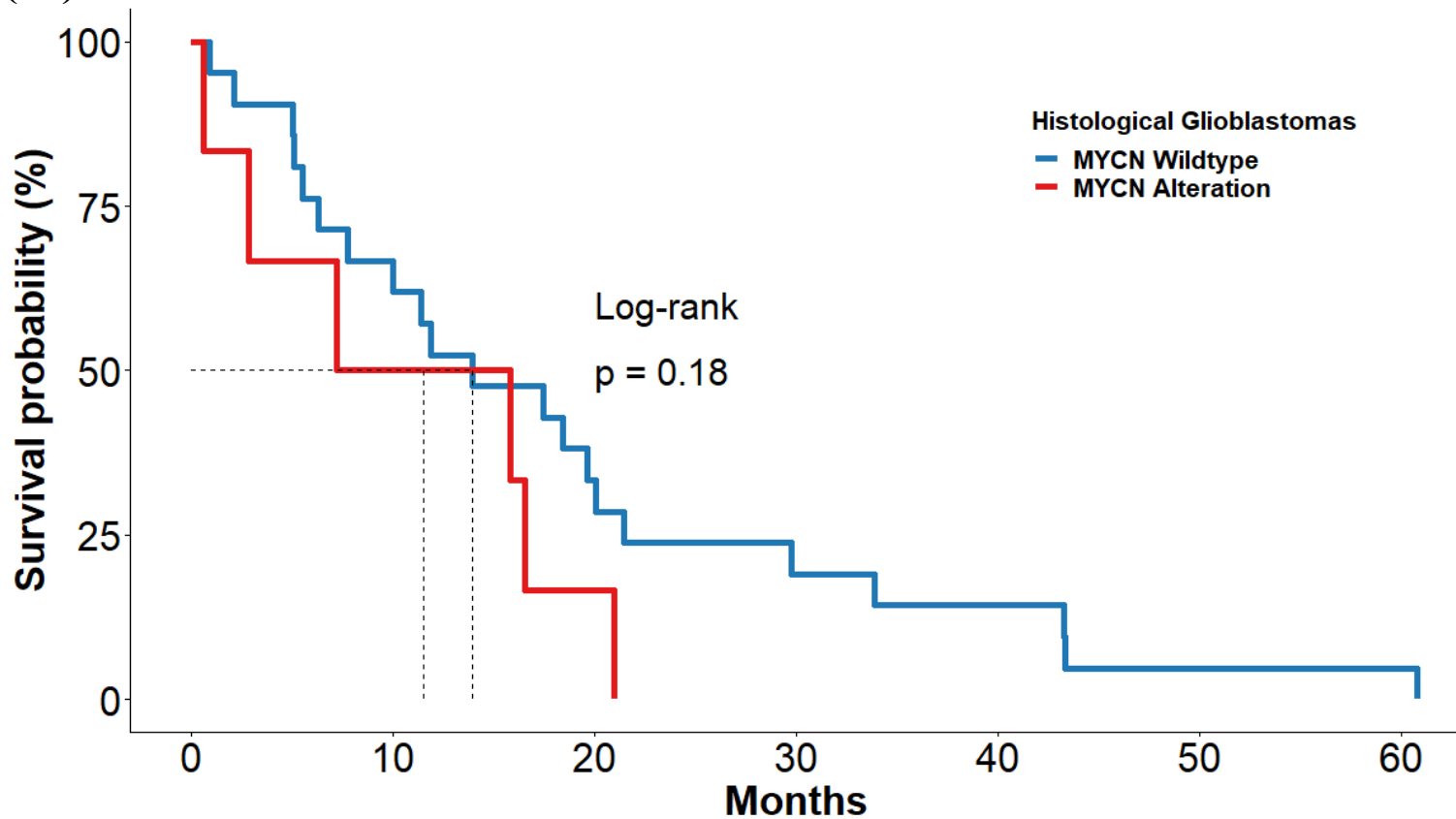
—	12	9	4	3	3	1	1
—	15	8	4	1	0	0	0

(18)



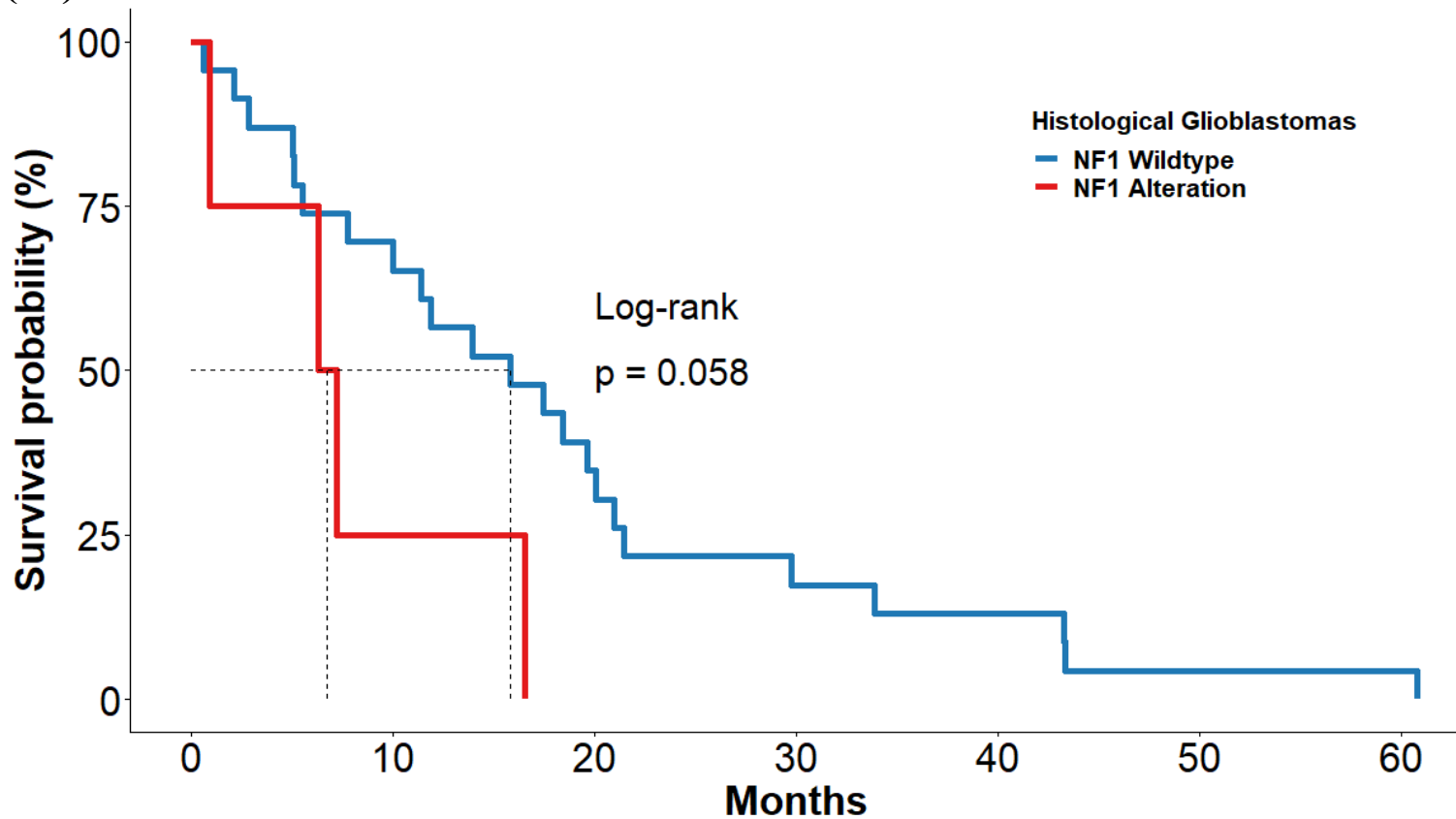
—	20	12	7	4	3	1	1
—	7	5	1	0	0	0	0

(19)



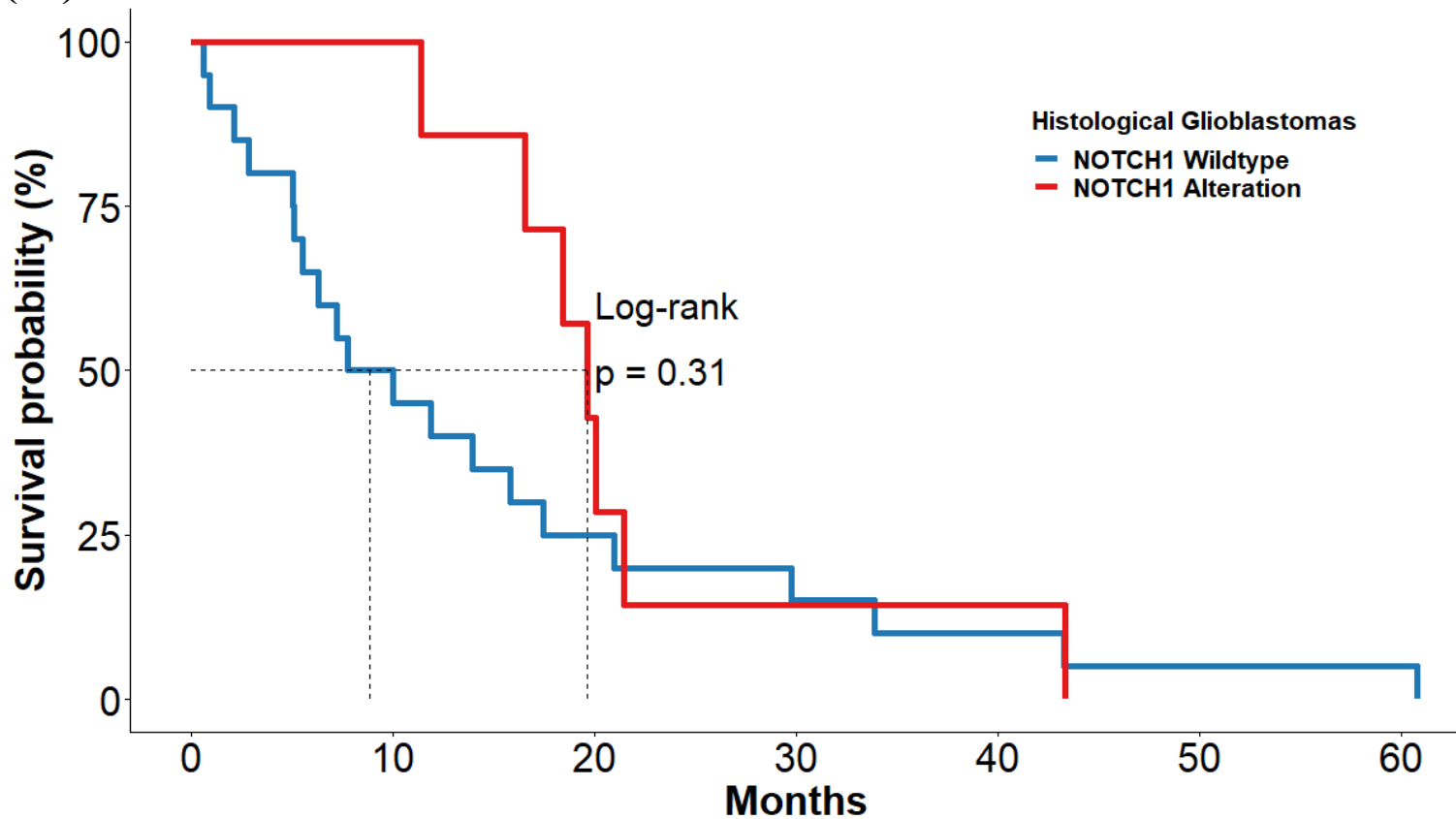
—	21	14	7	4	3	1	1
—	6	3	1	0	0	0	0

(20)



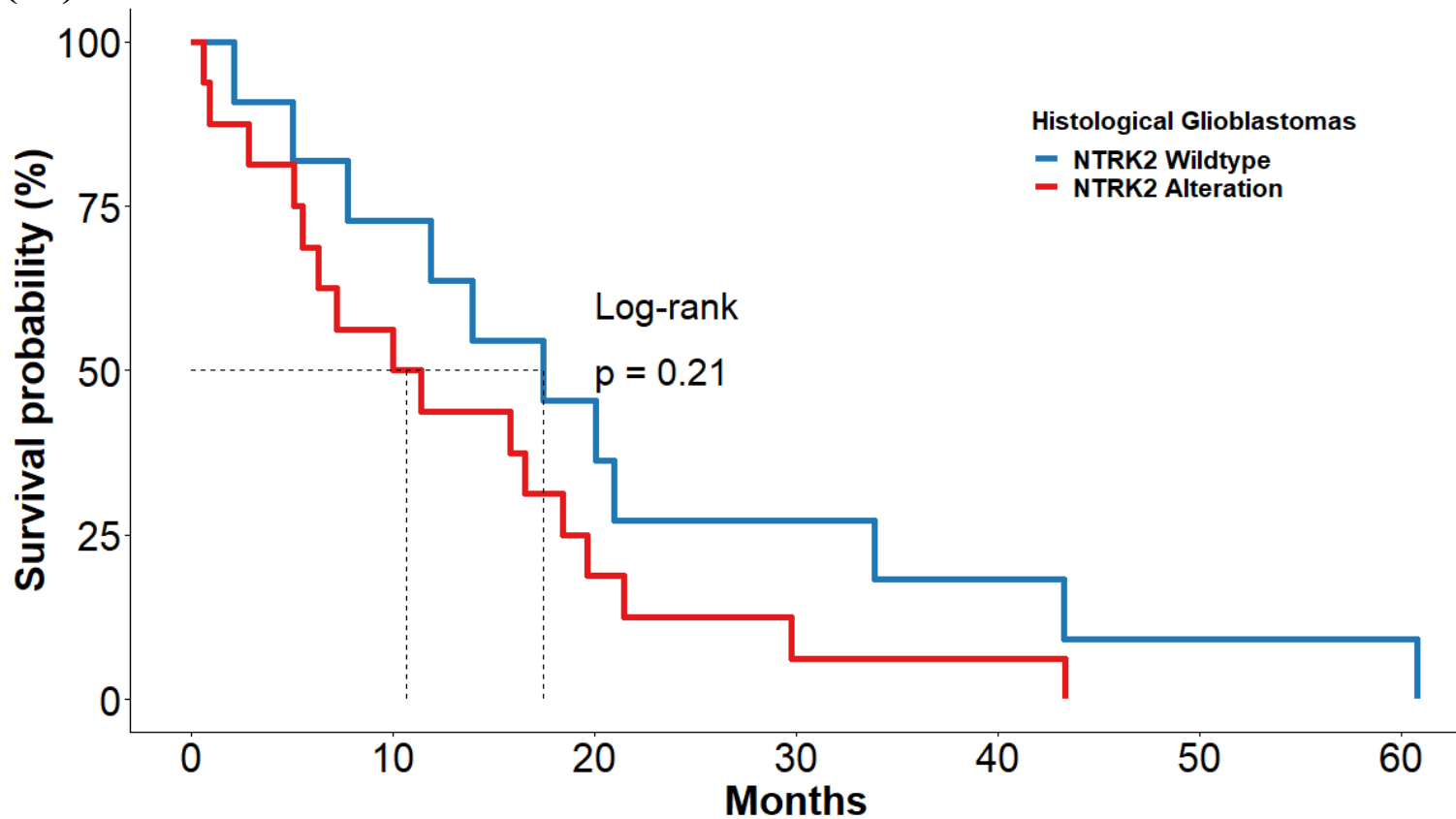
—	23	16	8	4	3	1	1
—	4	1	0	0	0	0	0

(21)



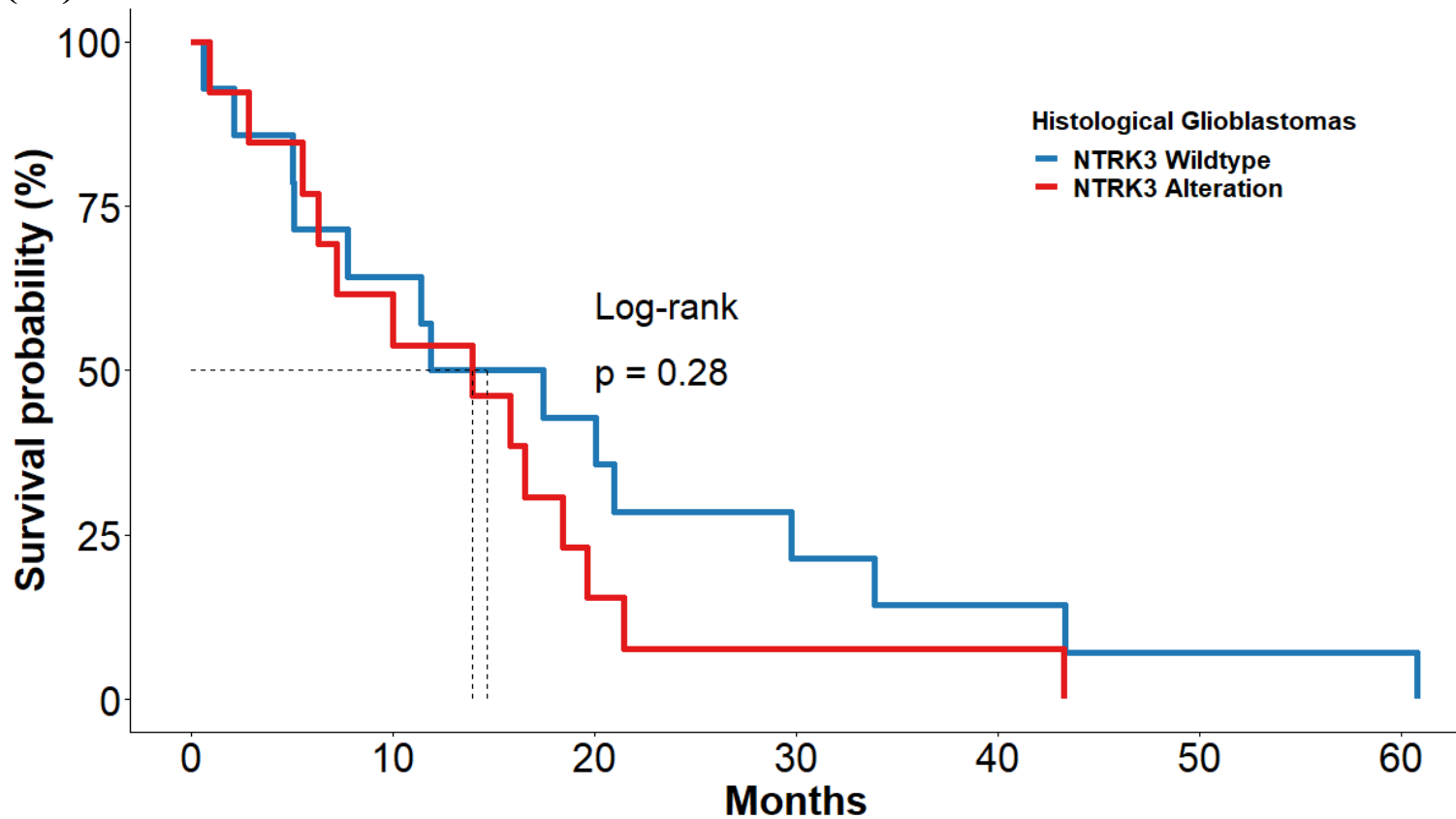
—	20	10	5	3	2	1	1
—	7	7	3	1	1	0	0

(22)



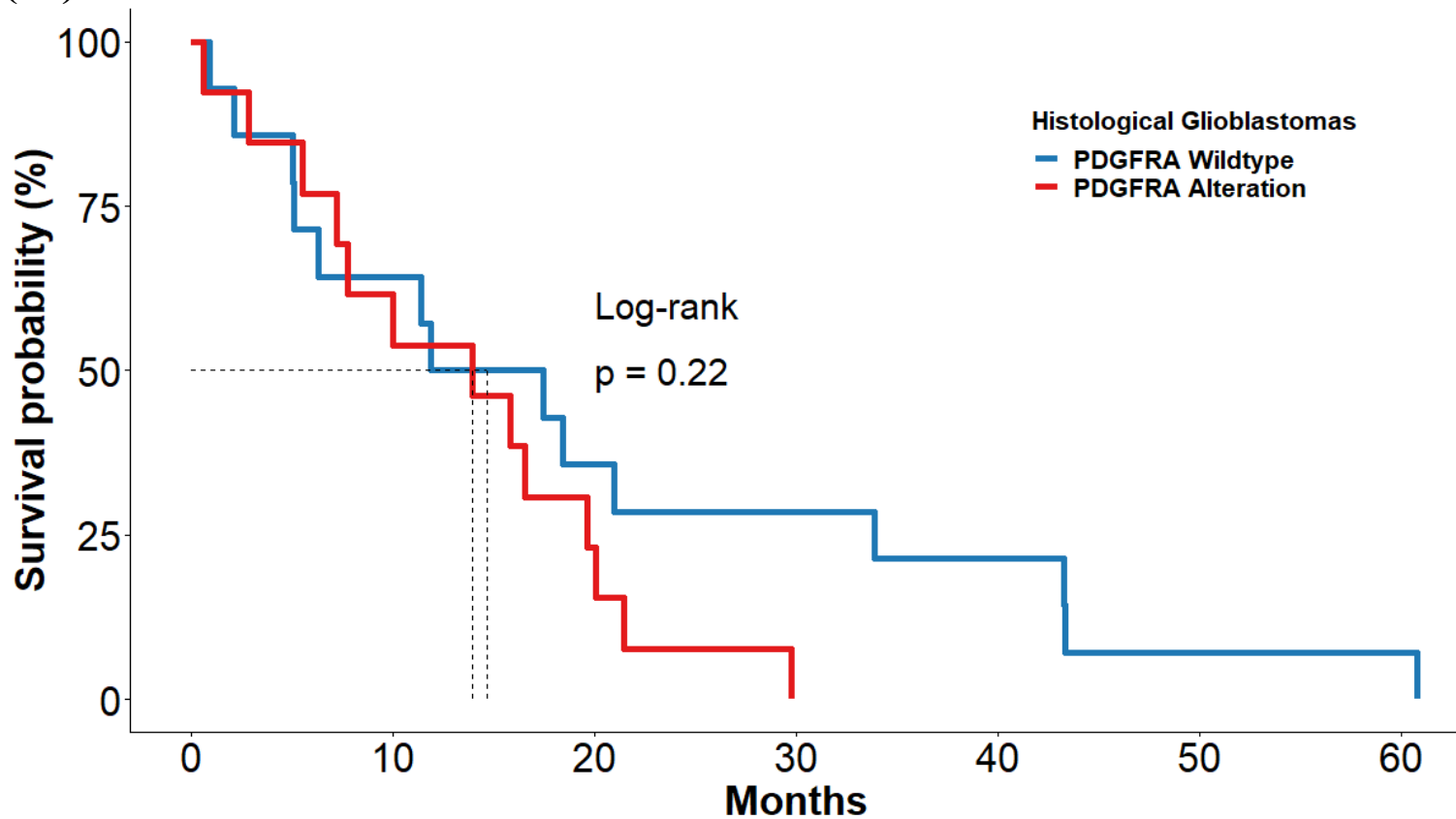
—	11	8	5	3	2	1	1
—	16	9	3	1	1	0	0

(23)



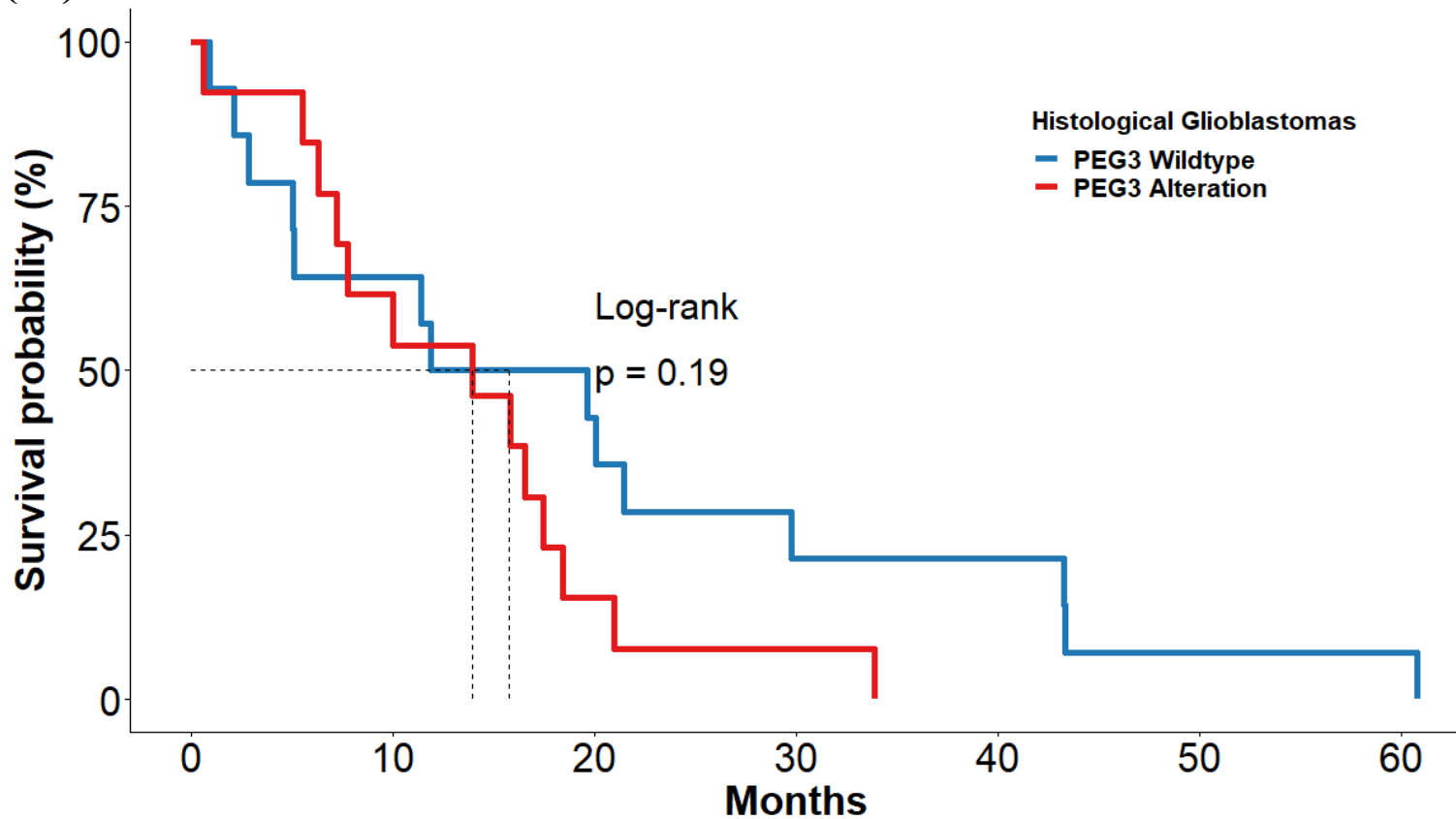
—	14	9	6	3	2	1	1
—	13	8	2	1	1	0	0

(24)



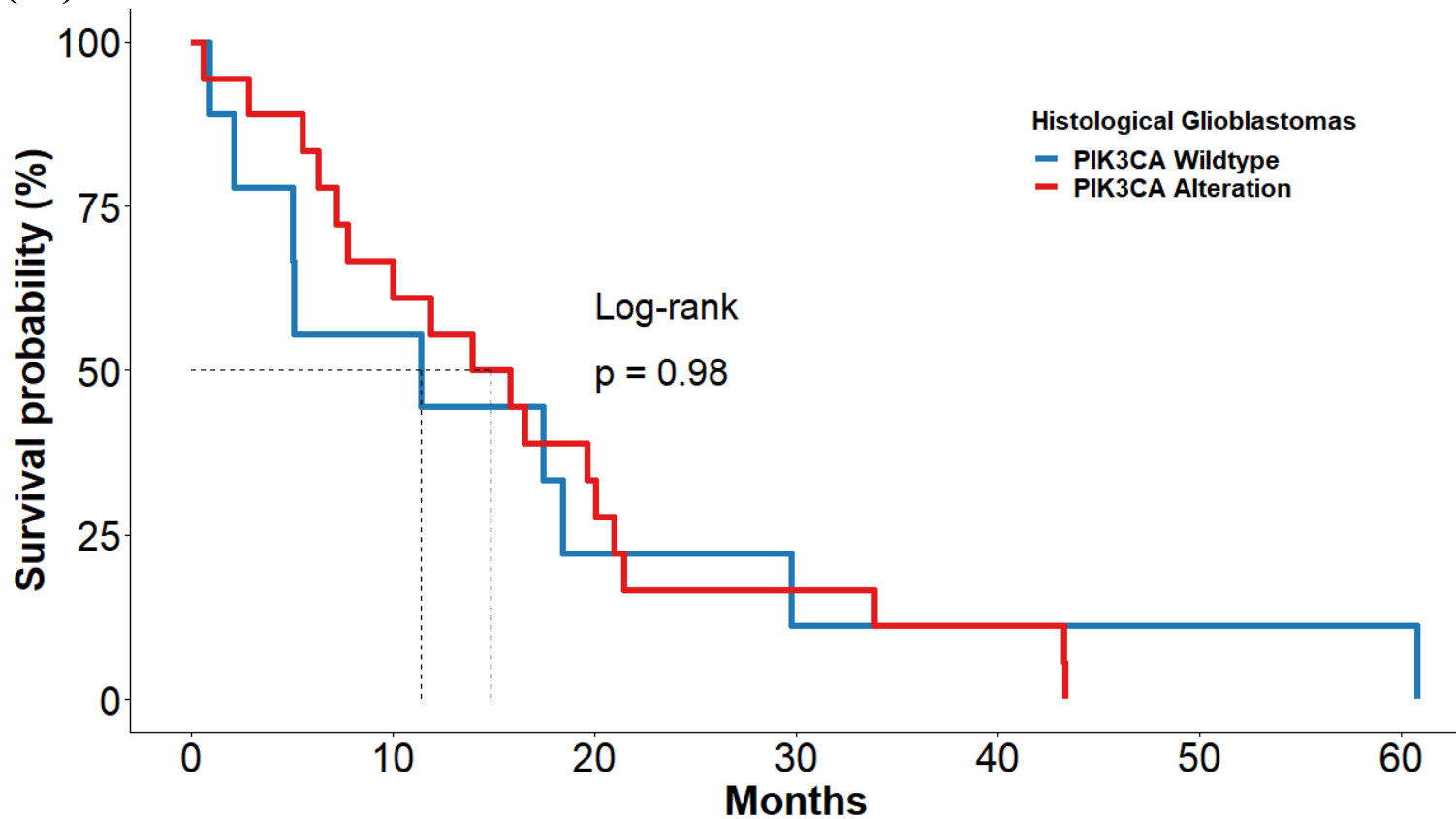
—	14	9	5	4	3	1	1
—	13	8	3	0	0	0	0

(25)



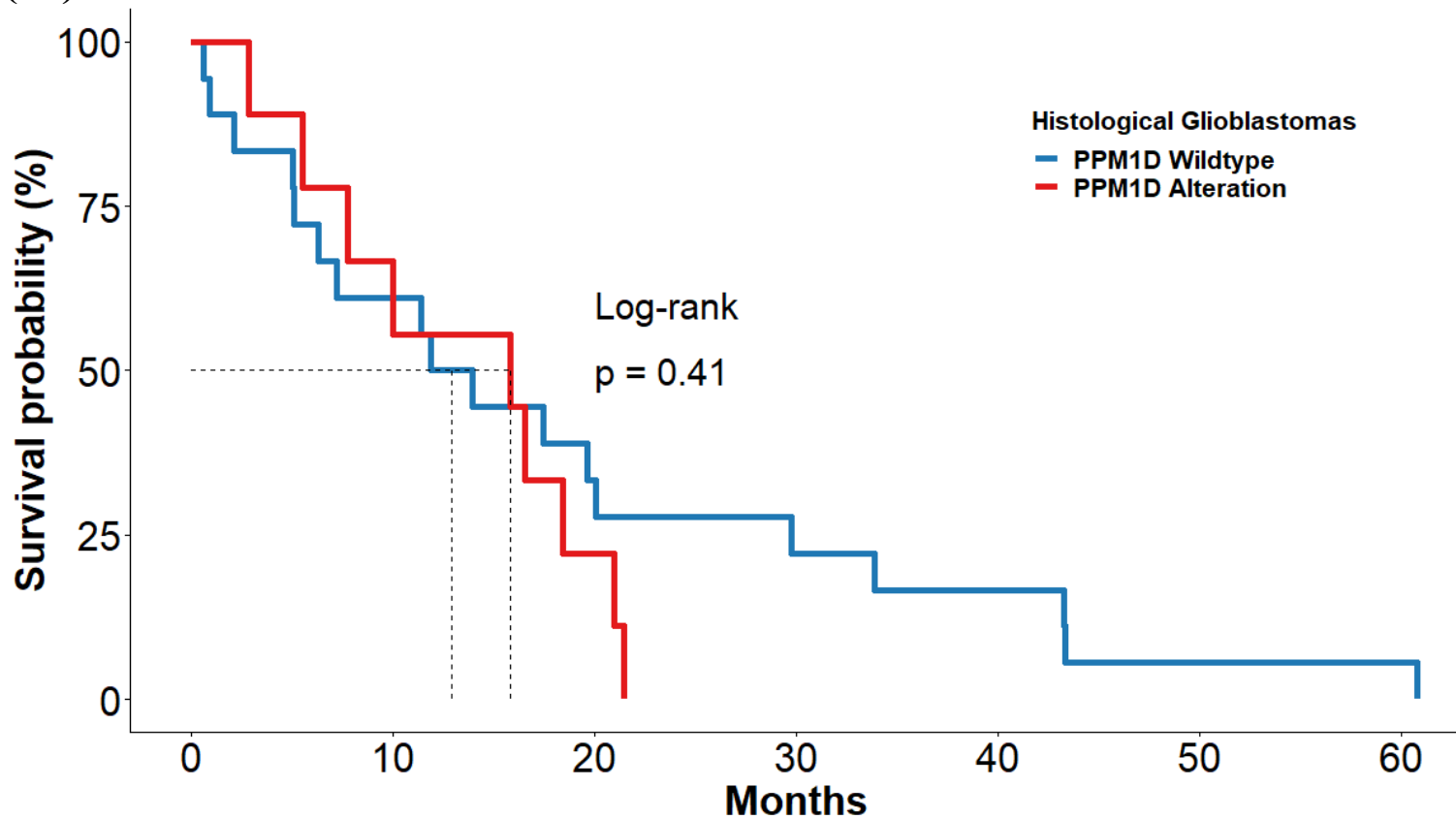
—	14	9	6	3	3	1	1
—	13	8	2	1	0	0	0

(26)



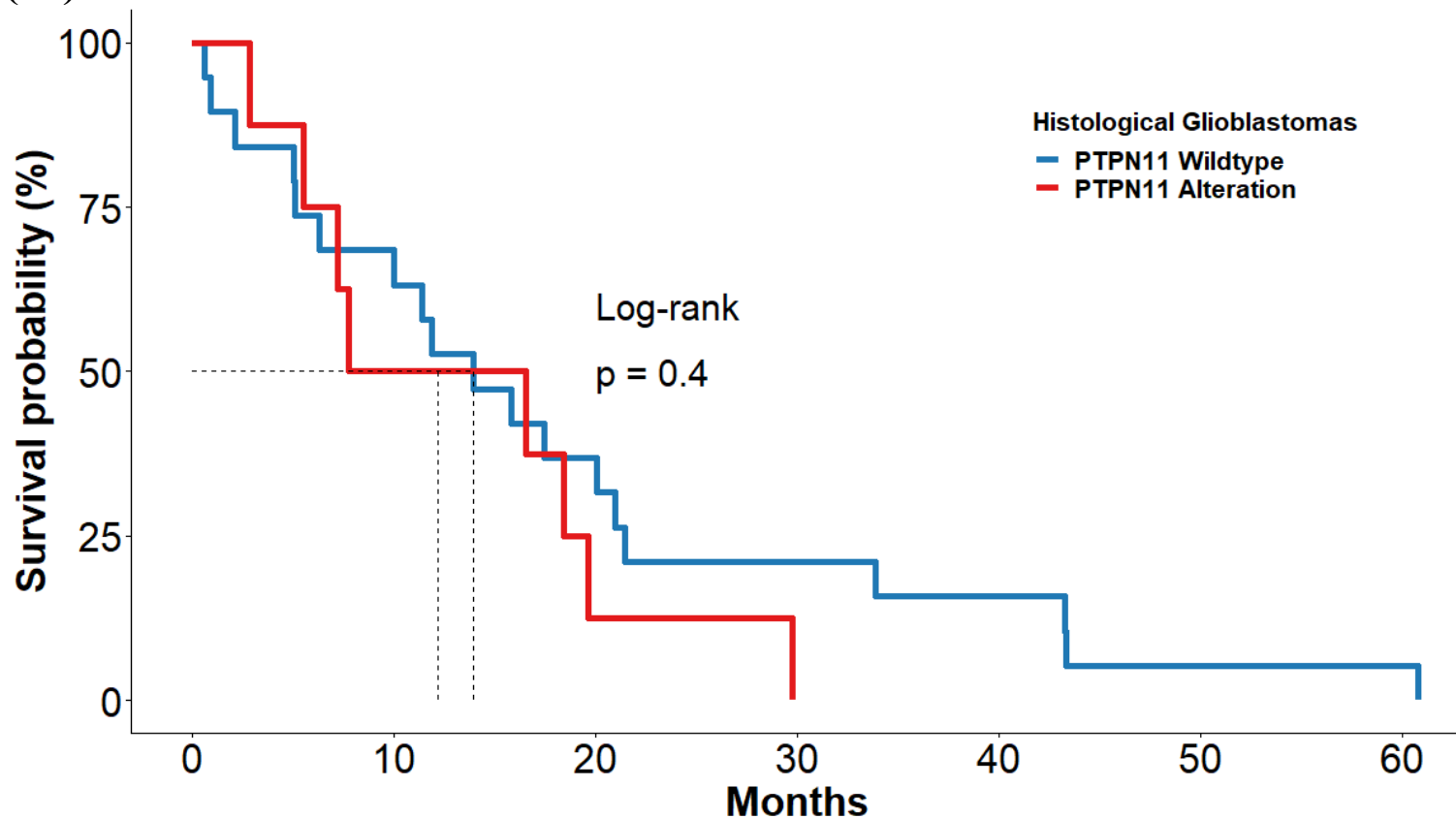
—	9	5	2	1	1	1	1
—	18	12	6	3	2	0	0

(27)



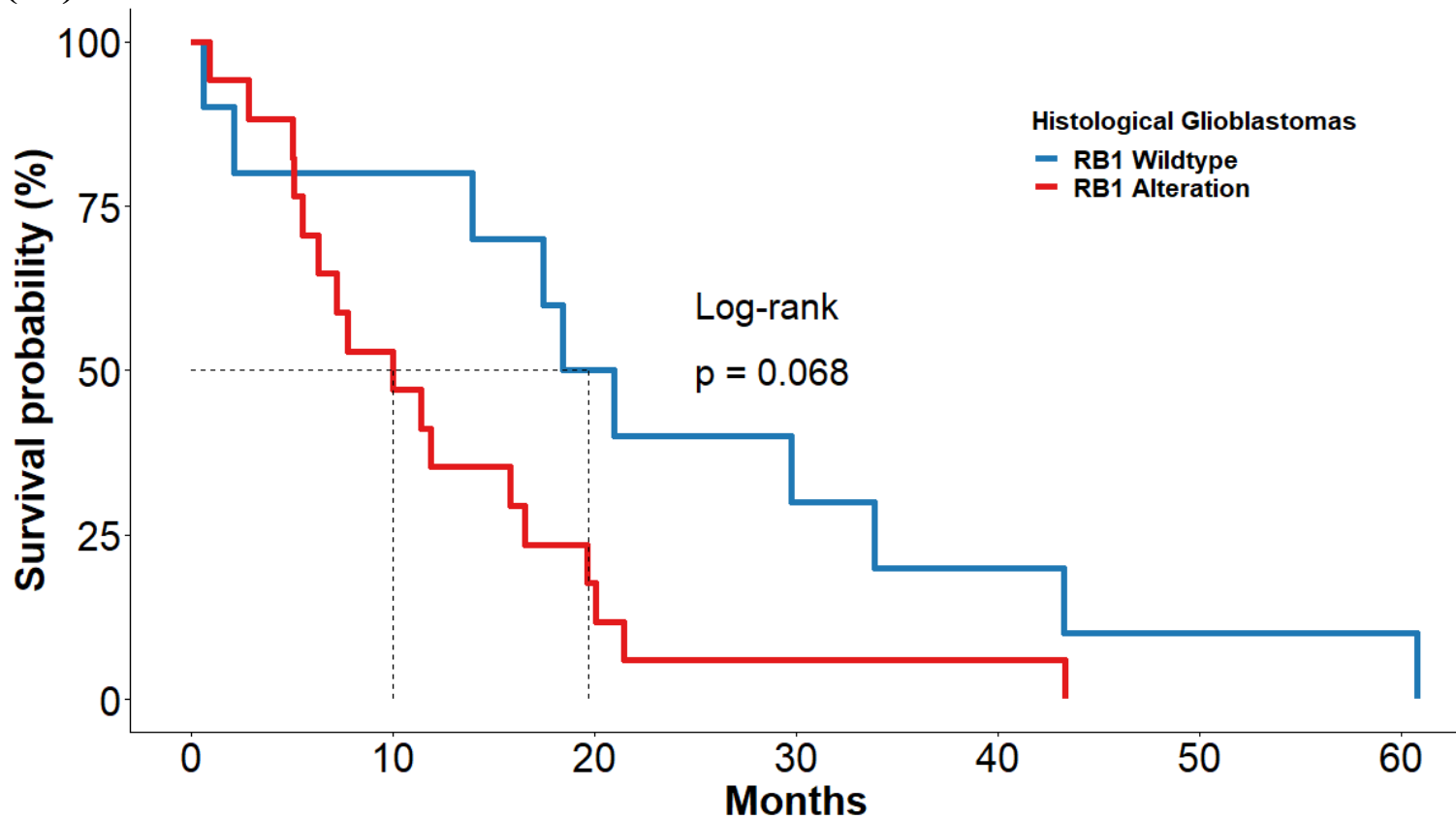
18	11	6	4	3	1	1
9	6	2	0	0	0	0

(28)



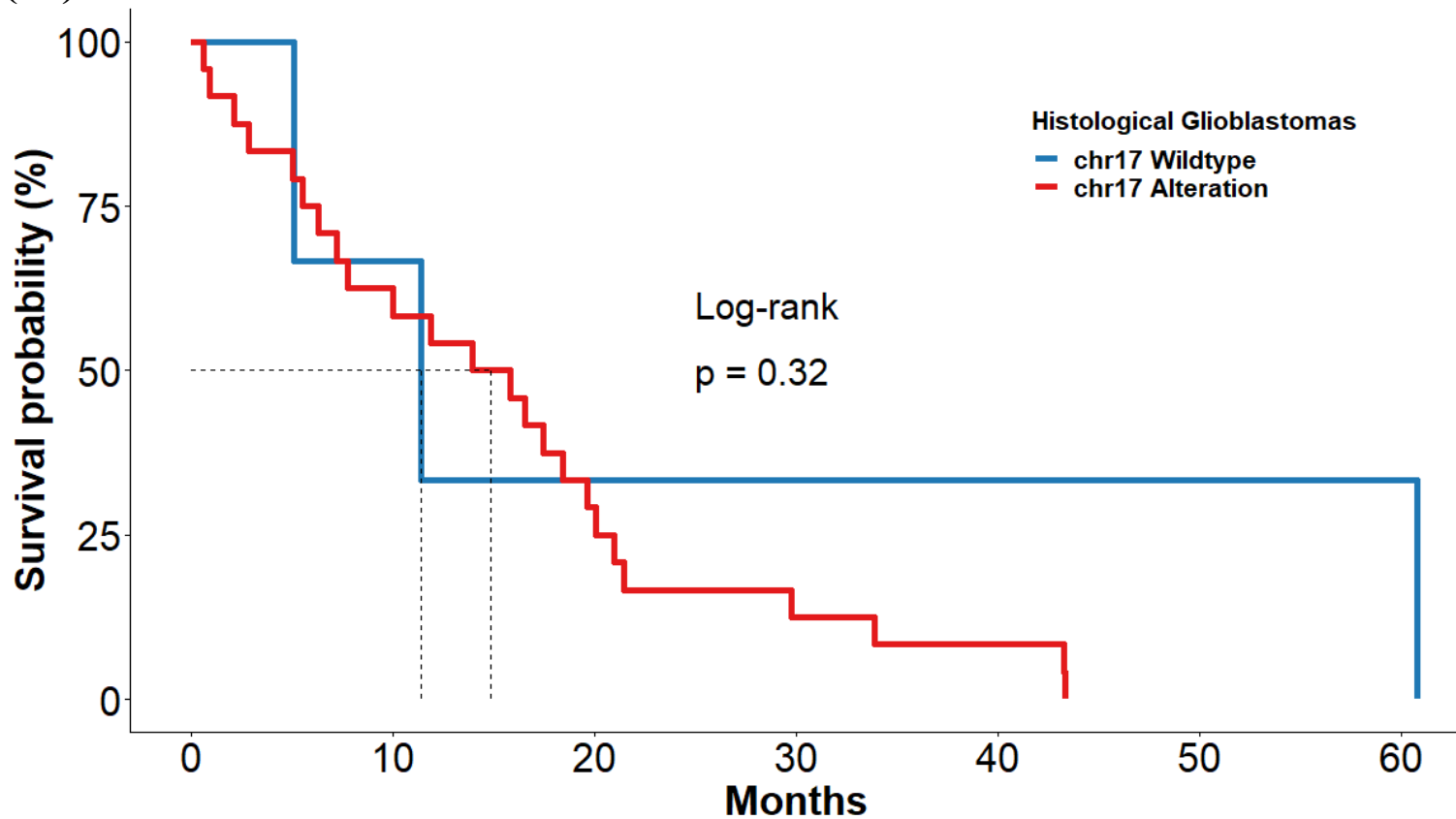
—	19	13	7	4	3	1	1
—	8	4	1	0	0	0	0

(29)



—	10	8	5	3	2	1	1
—	17	9	3	1	1	0	0

(30)



— 3 2 1 1 1 1 1
— 24 15 7 3 2 0 0