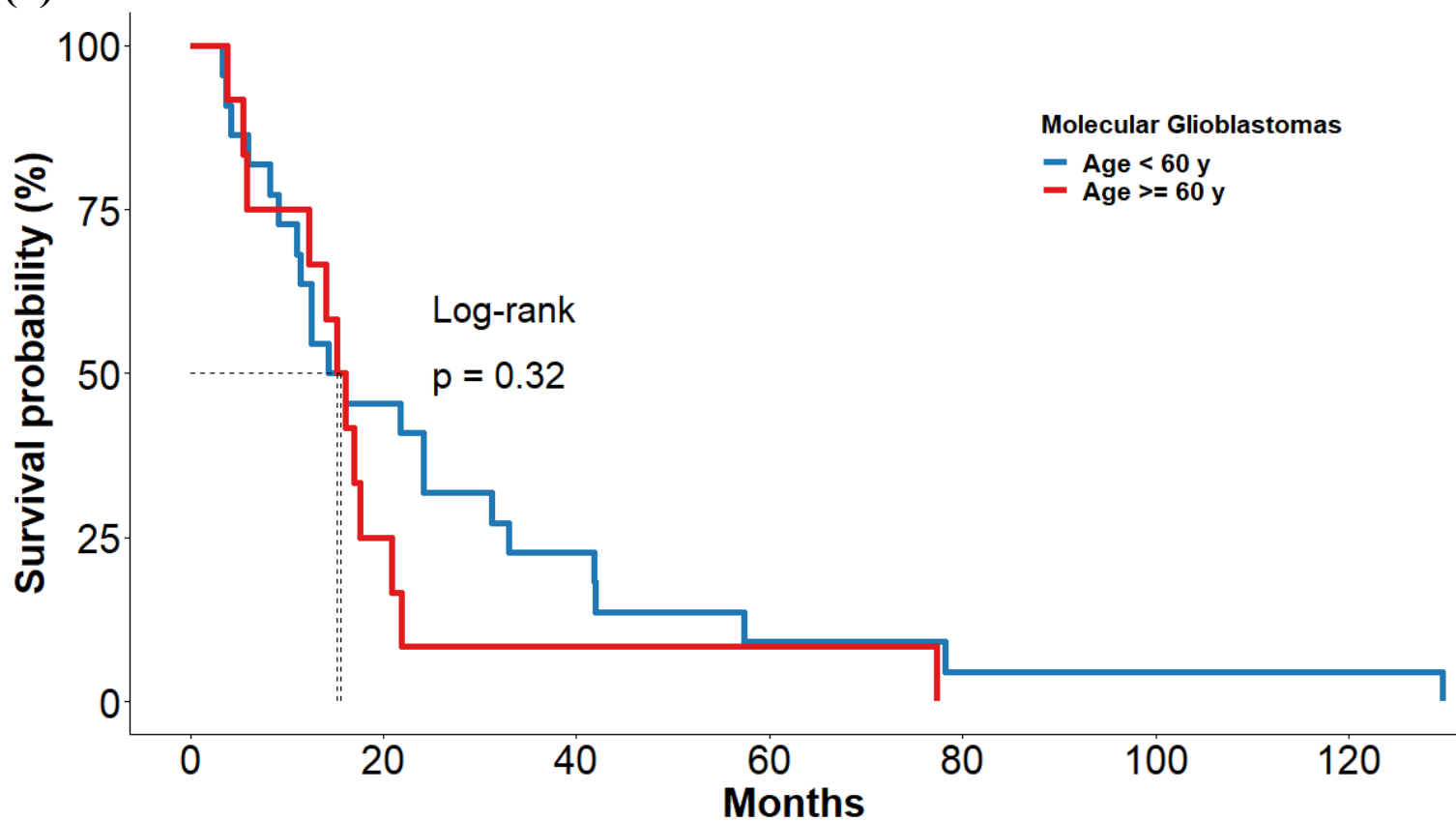


Supplementary Figure 3. Kaplan–Meier curves showing no significant effects of certain genetic and immunohistochemical alterations on the overall survival of patients with molecular glioblastomas (1-31). Since the numbers of patients divided into two groups (e.g. FGFR1 Wildtype/FGFR1 Alteration) using different parameters varied, we only enrolled the parameters using which the number of patients in either group was above 3. Parameters used in this section were shown as follows.

(1)	Age	1
(2)	Stupp protocol	2
(3)	NeuN	3
(4)	Syn	4
(5)	MGMT promotor methylation.....	5
(6)	TERT promotor mutation	6
(7)	EGFR Amplification	7
(8)	CDKN2A/B homozygous deletion.....	8
(9)	BRAF	9
(10)	FGFR1	10
(11)	FGFR2.....	11
(12)	FGFR4.....	12
(13)	KIT	13
(14)	KRAS	14
(15)	MET	15
(16)	MYB.....	16
(17)	MYBL1	17
(18)	MYC.....	18
(19)	MYCN	19
(20)	NF1.....	20
(21)	NOTCH1	21
(22)	NTRK2.....	22
(23)	NTRK3.....	23
(24)	PDGFRA	24
(25)	PEG3	25
(26)	PIK3CA.....	26
(27)	PPM1D	27
(28)	PTEN	28
(29)	PTPN11	29
(30)	RB1	30
(31)	TOP3A	31

(1)



22
12

10
3

5
1

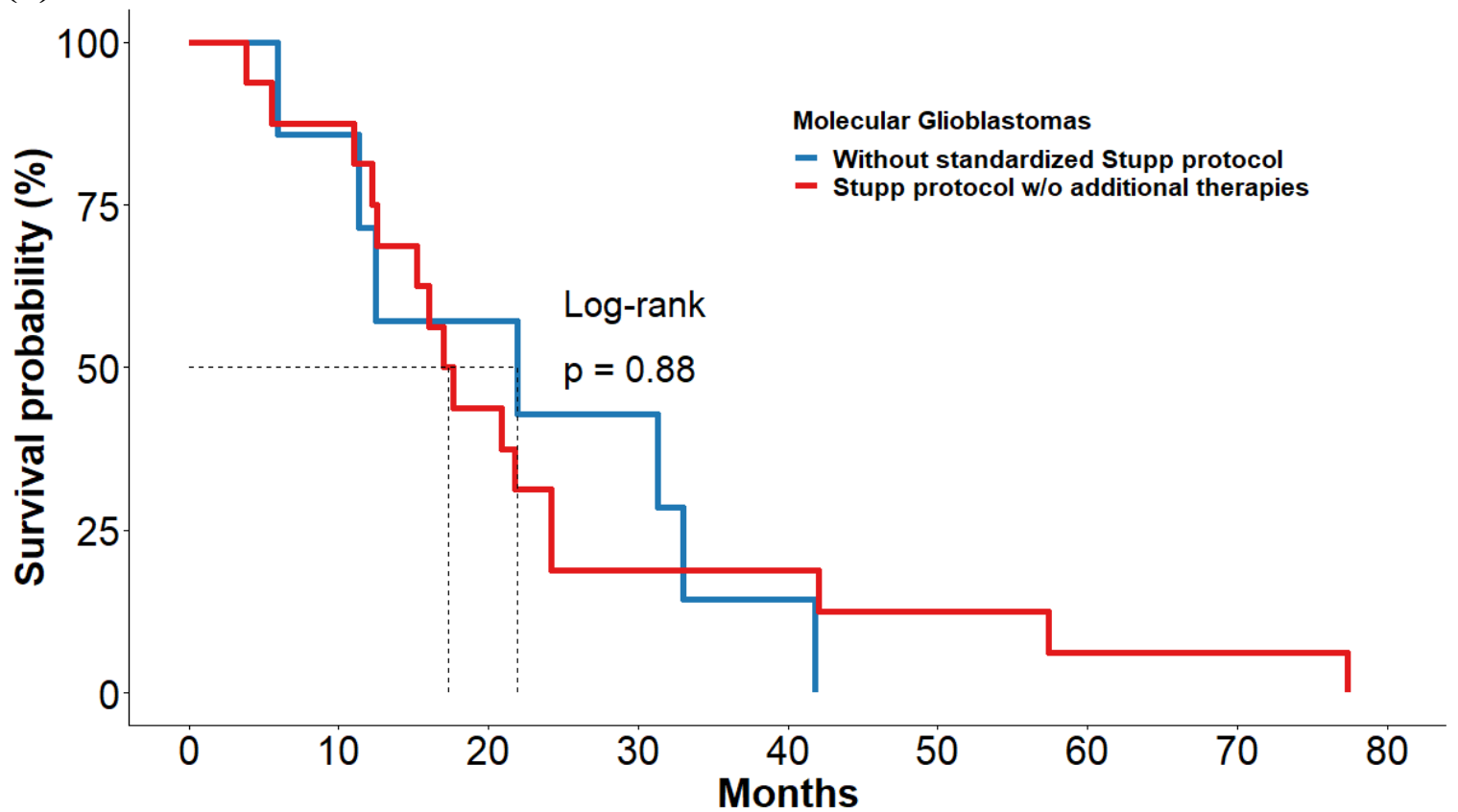
2
1

1
0

1
0

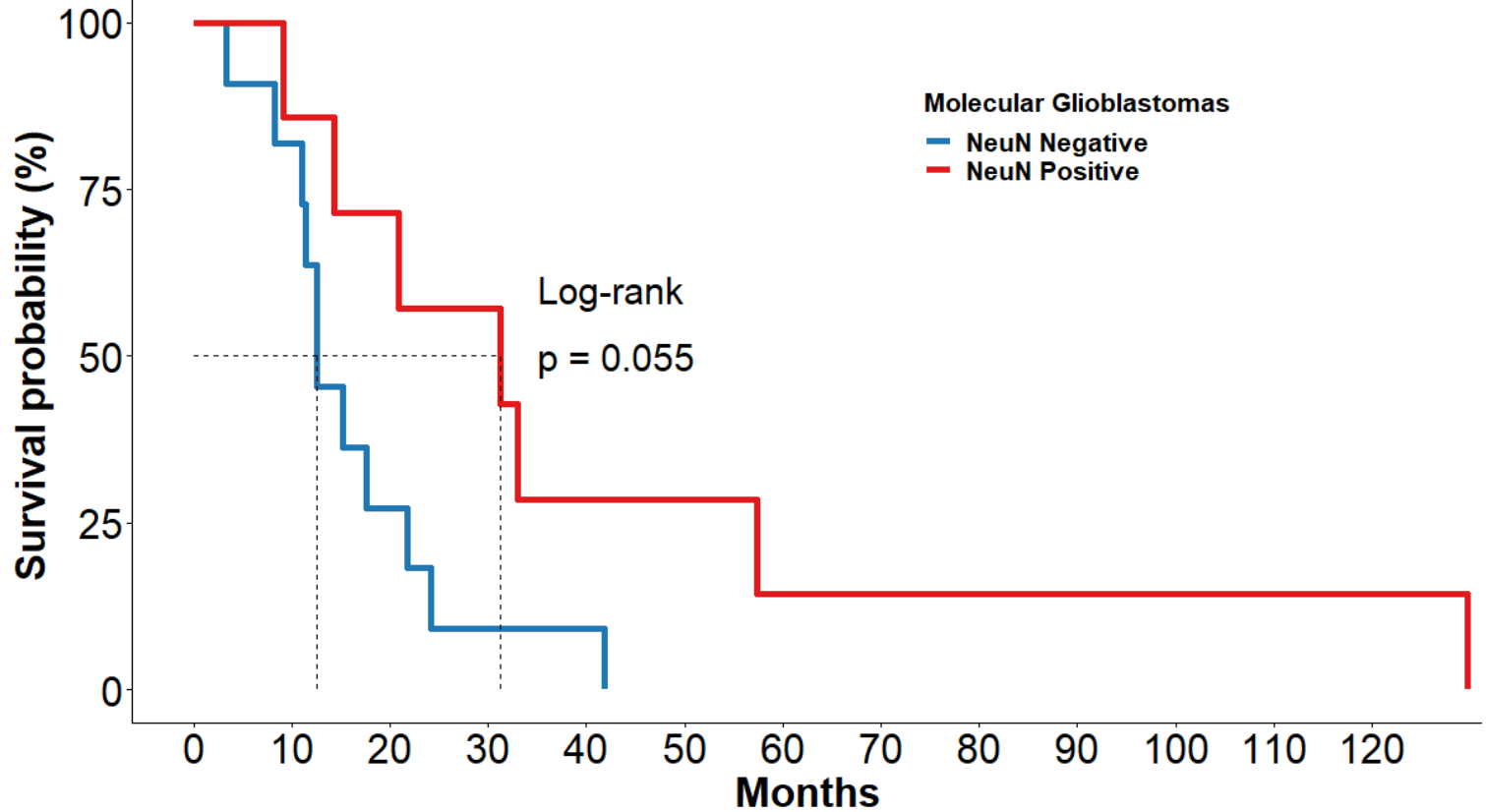
1
0

(2)

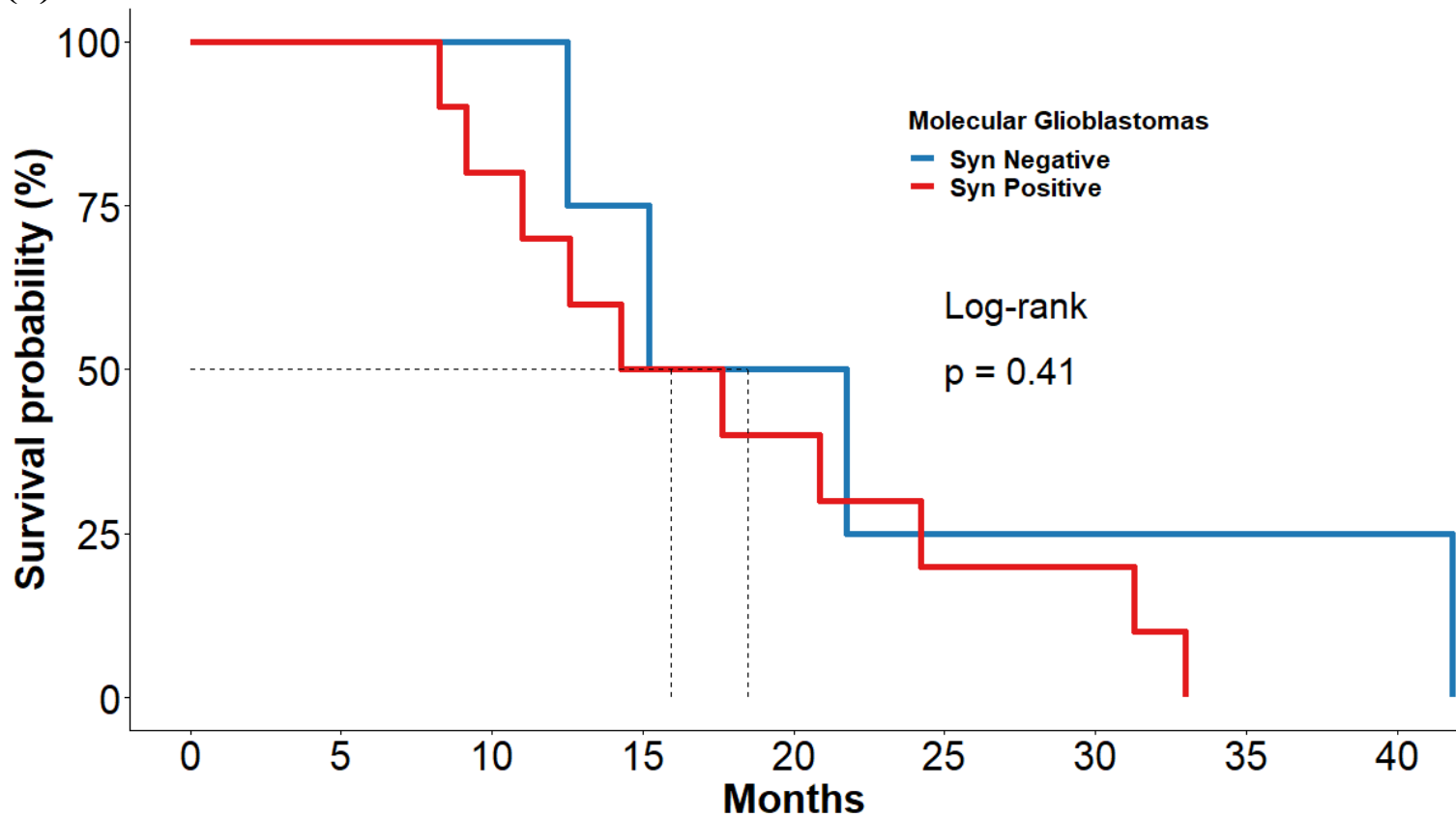


—	7	6	4	3	1	0	0	0	0
—	16	14	7	3	3	2	1	1	0

(3)

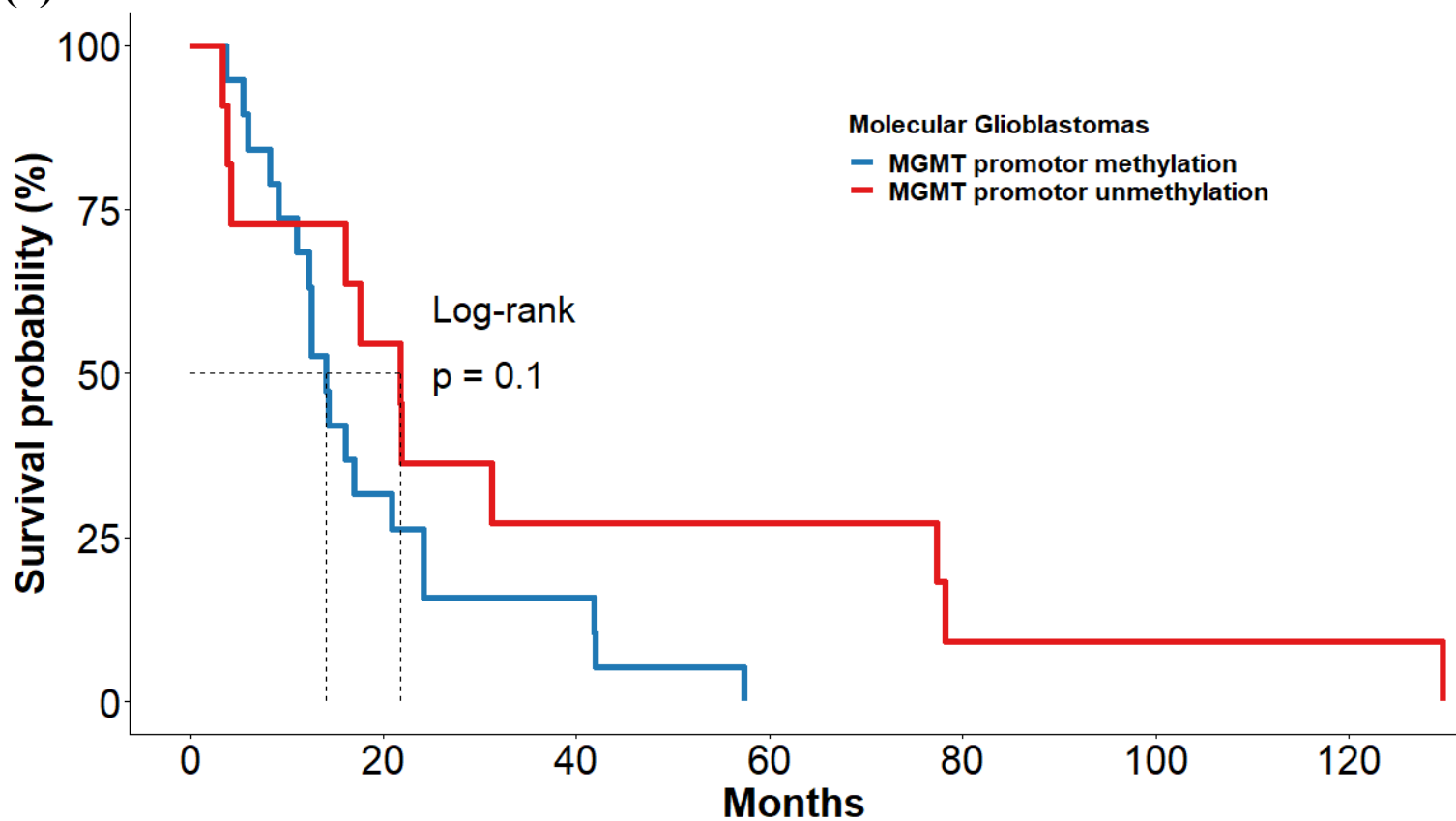


(4)



—	4	4	4	3	2	1	1	1	1
—	10	10	8	5	4	2	2	0	0

(5)



— 19
— 11

6
6

3
3

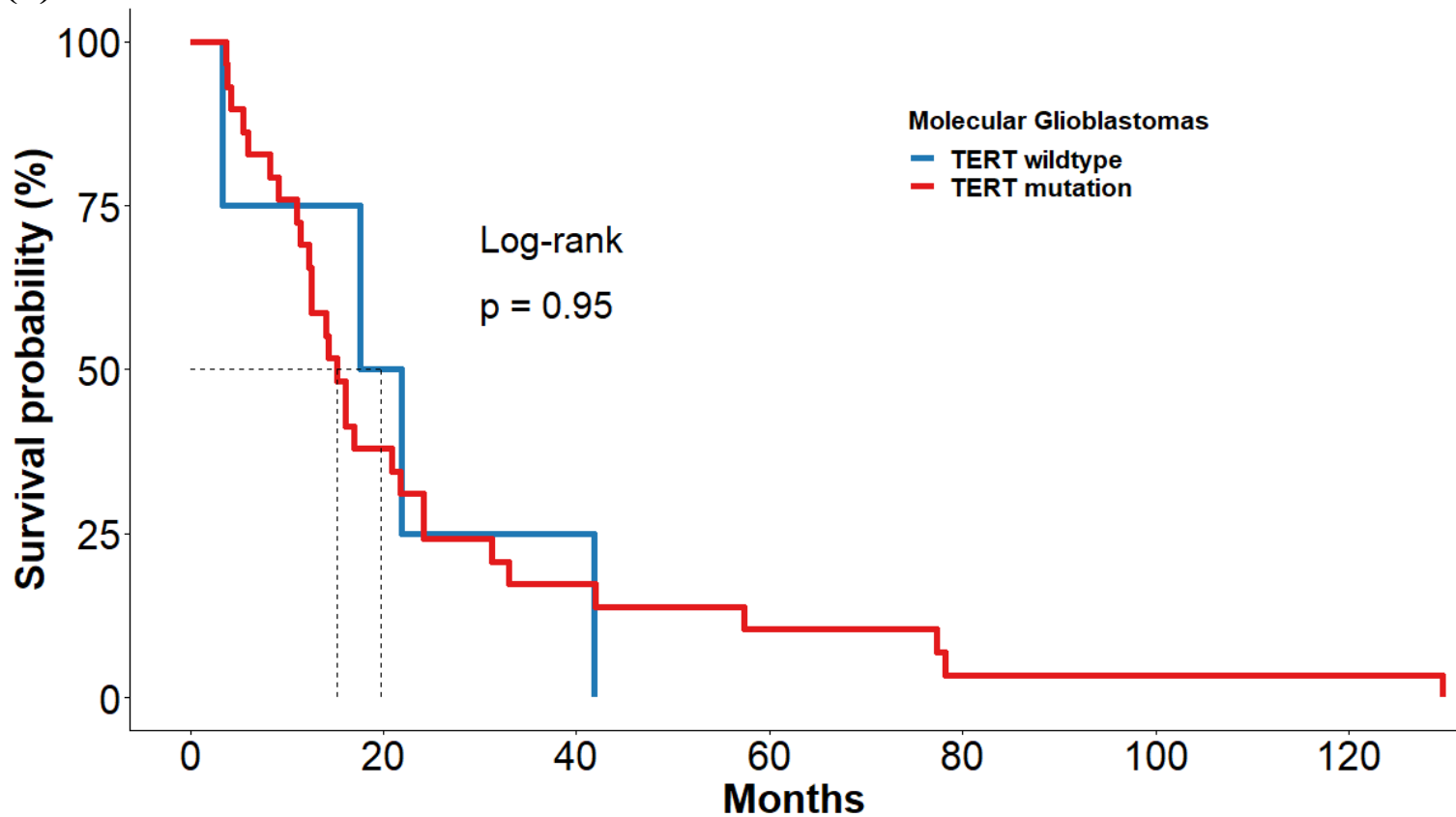
0
3

0
1

0
1

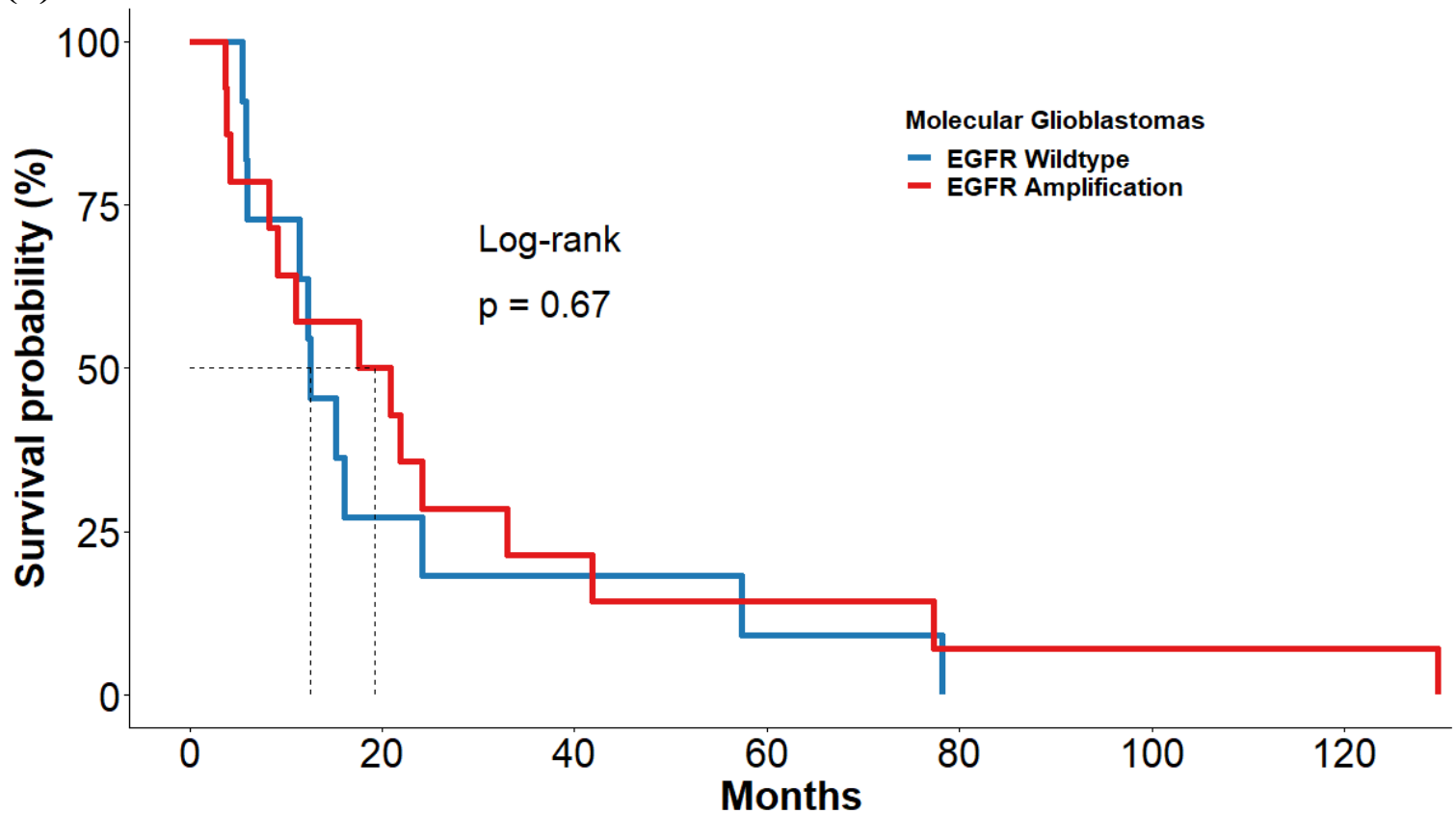
0
1

(6)



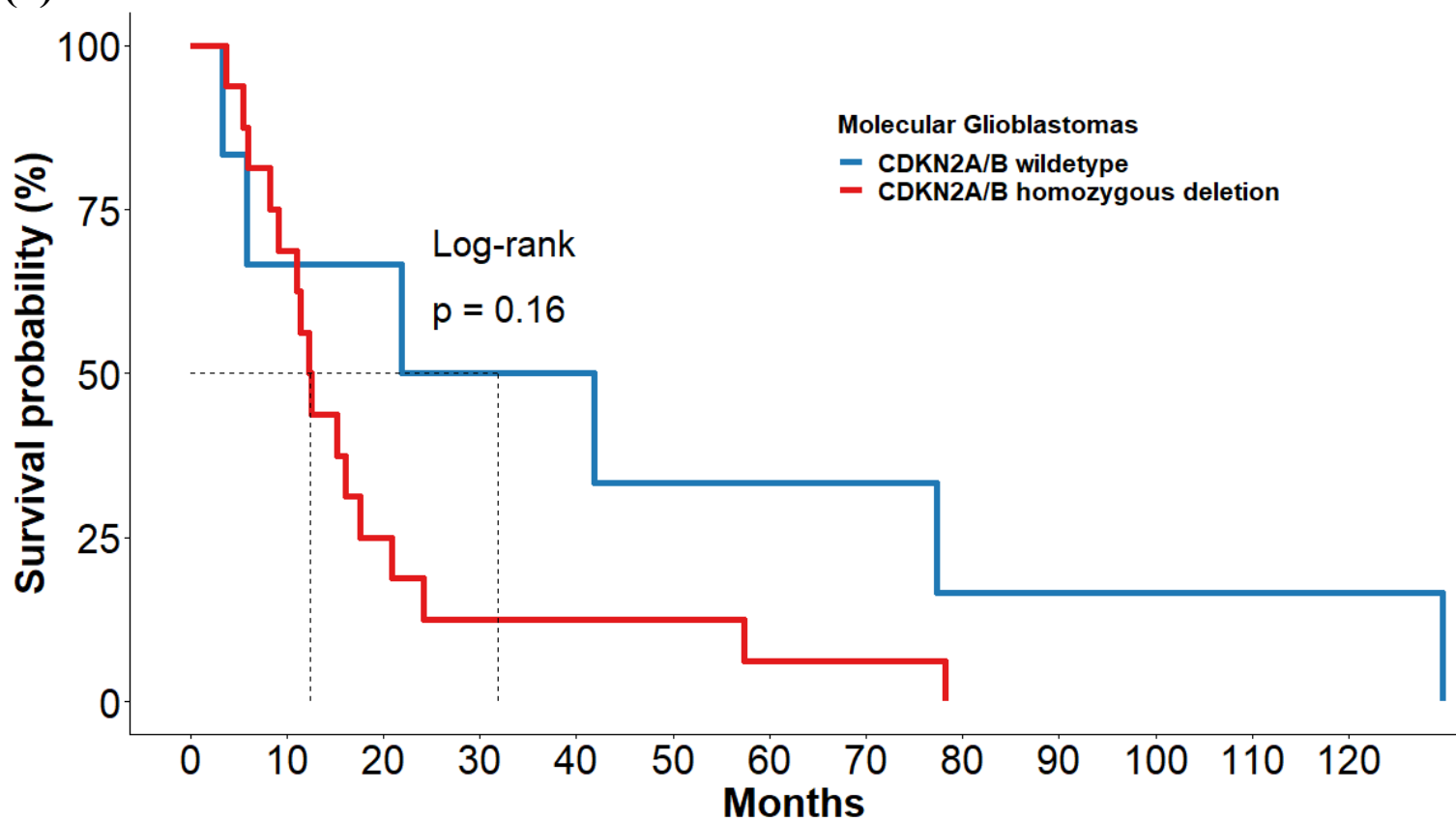
—	4	2	1	0	0	0	0
—	29	11	5	3	1	1	1

(7)



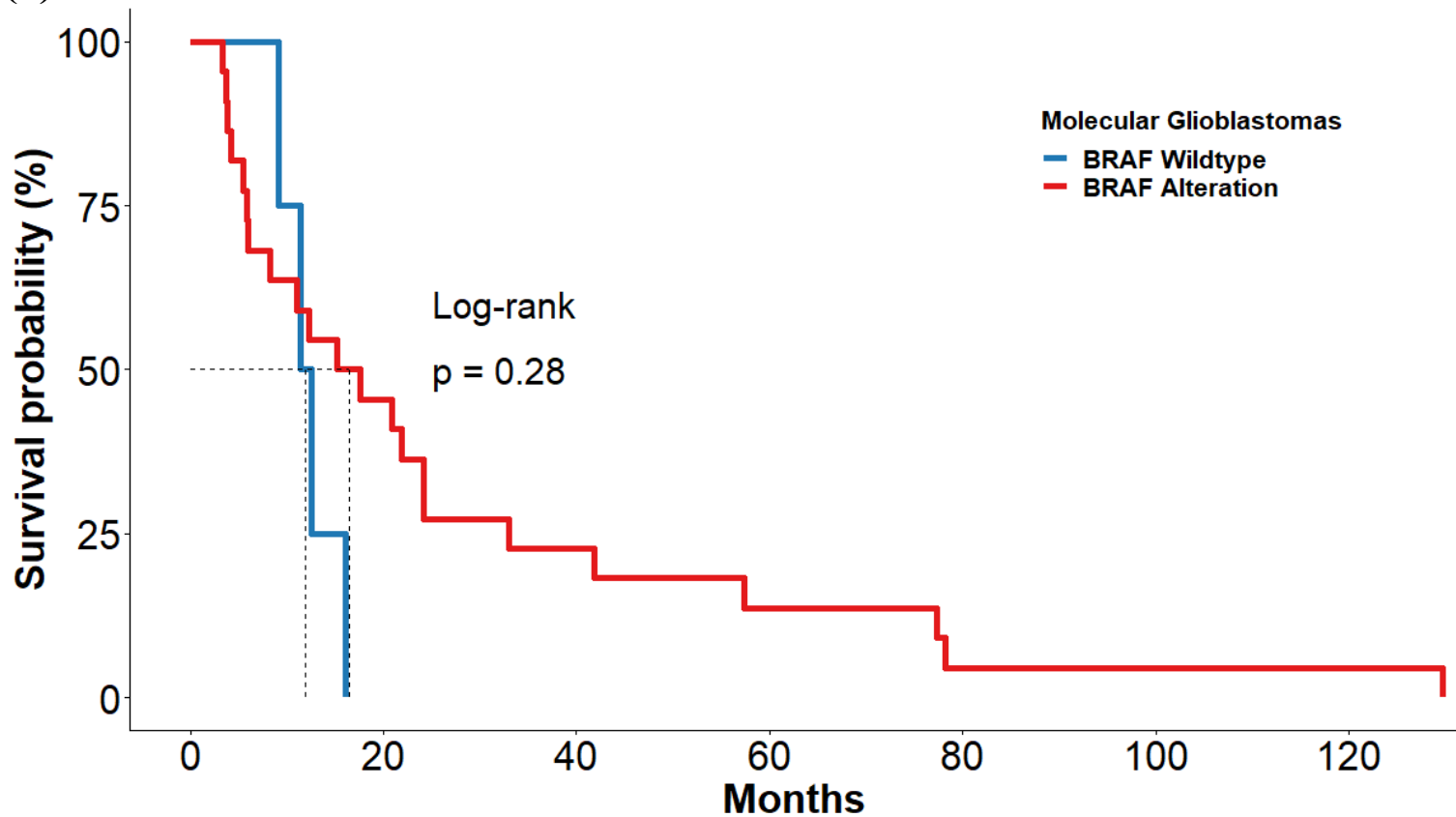
—	11	3	2	1	0	0	0
—	14	7	3	2	1	1	1

(8)



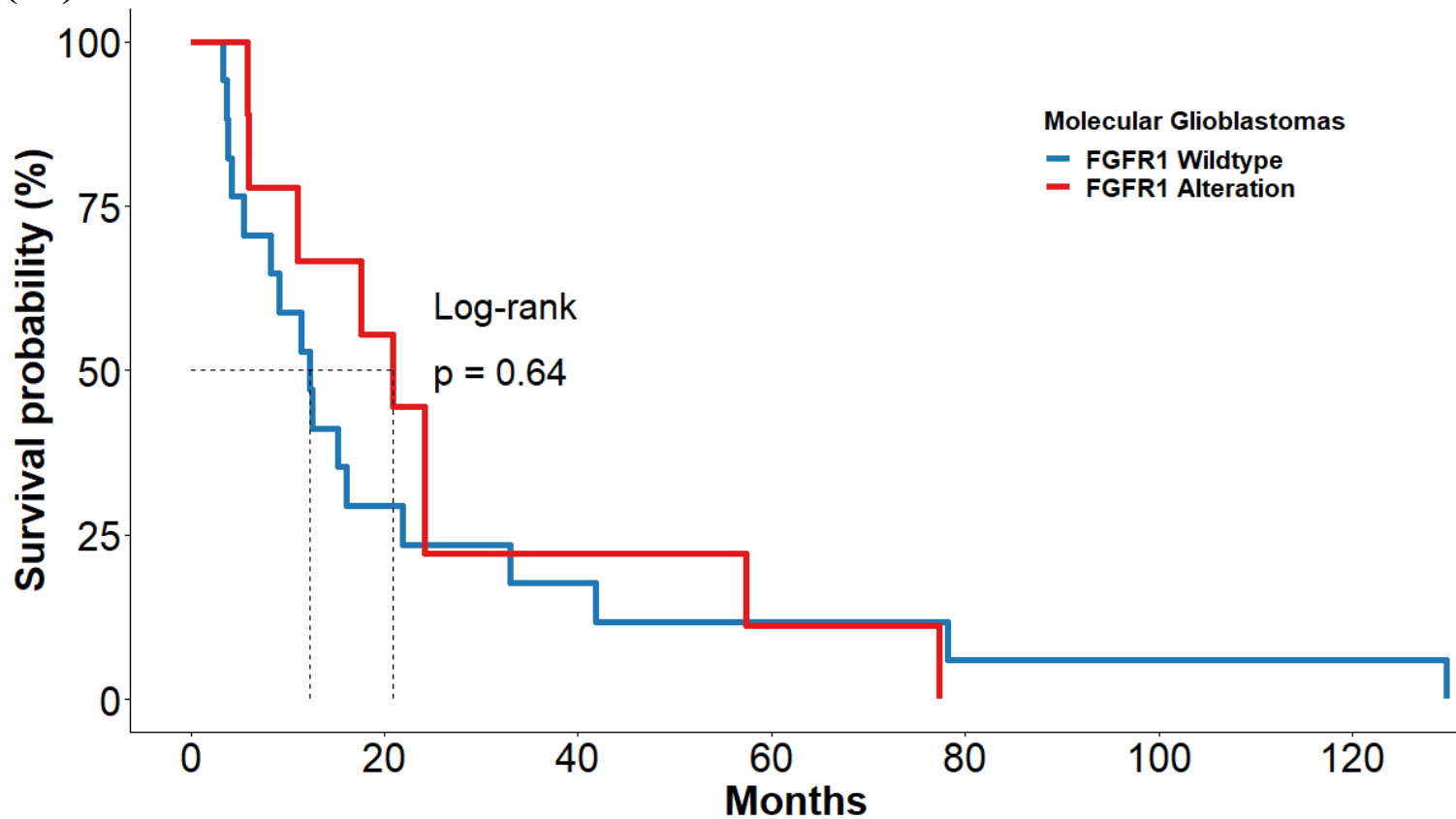
—	6	4	4	3	3	2	2	2	1	1	1	1	1
—	16	11	4	2	2	2	1	1	0	0	0	0	0

(9)



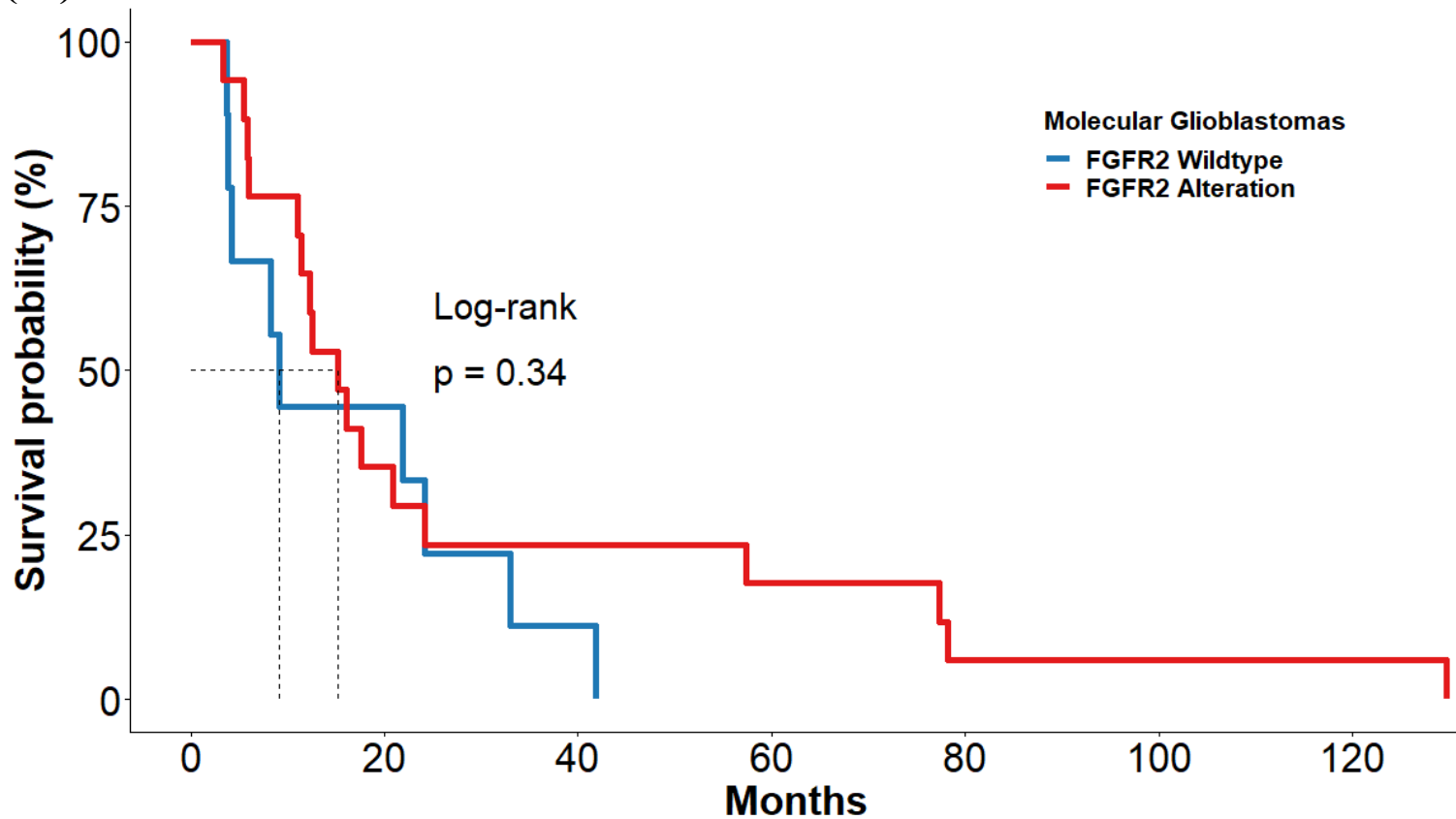
—	4	0	0	0	0	0	0	0
—	22	10	5	3	1	1	1	1

(10)



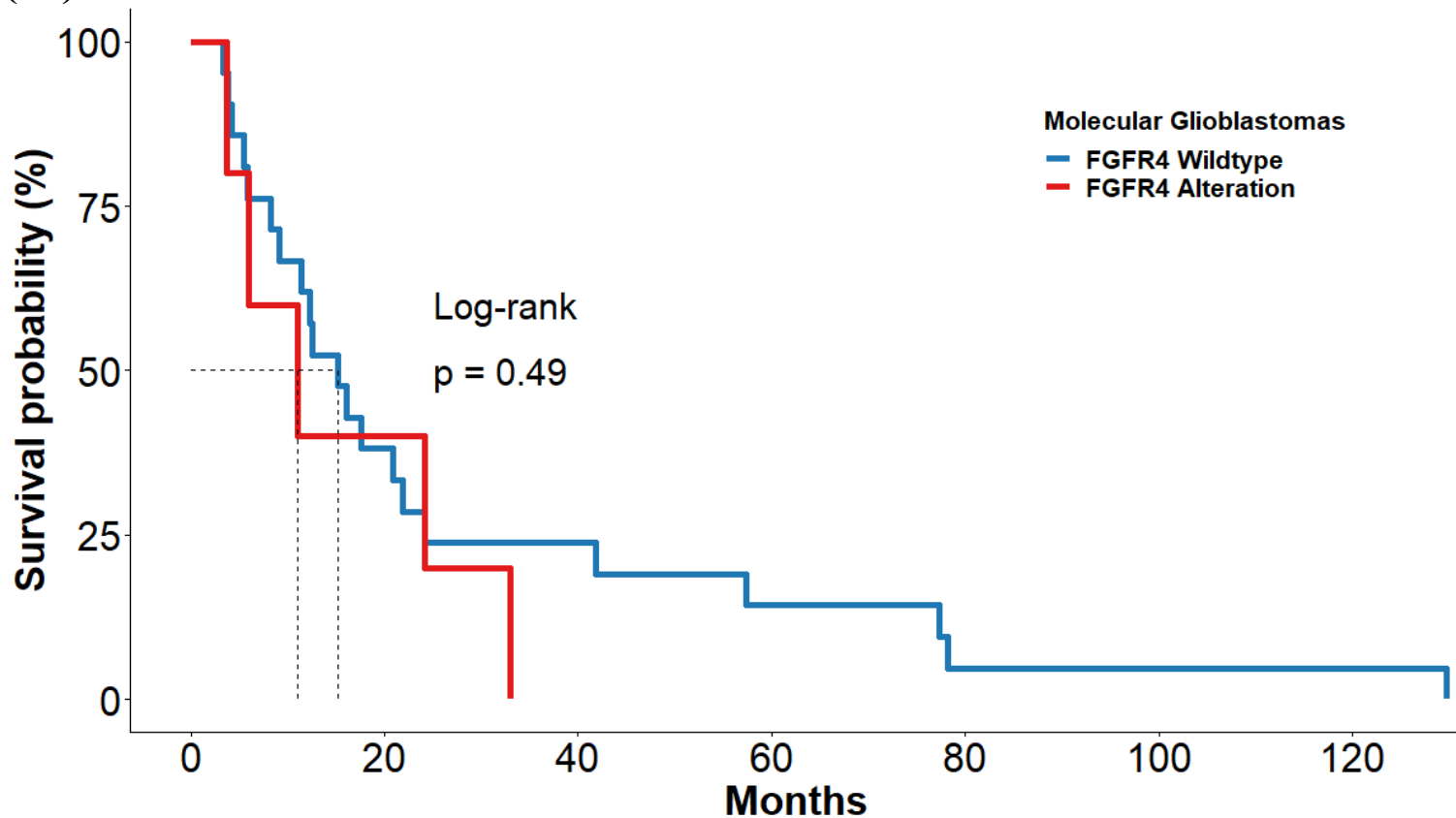
—	17	5	3	2	1	1	1
—	9	5	2	1	0	0	0

(11)



9	4	1	0	0	0	0
17	6	4	3	1	1	1

(12)



21
5

8
2

5
0

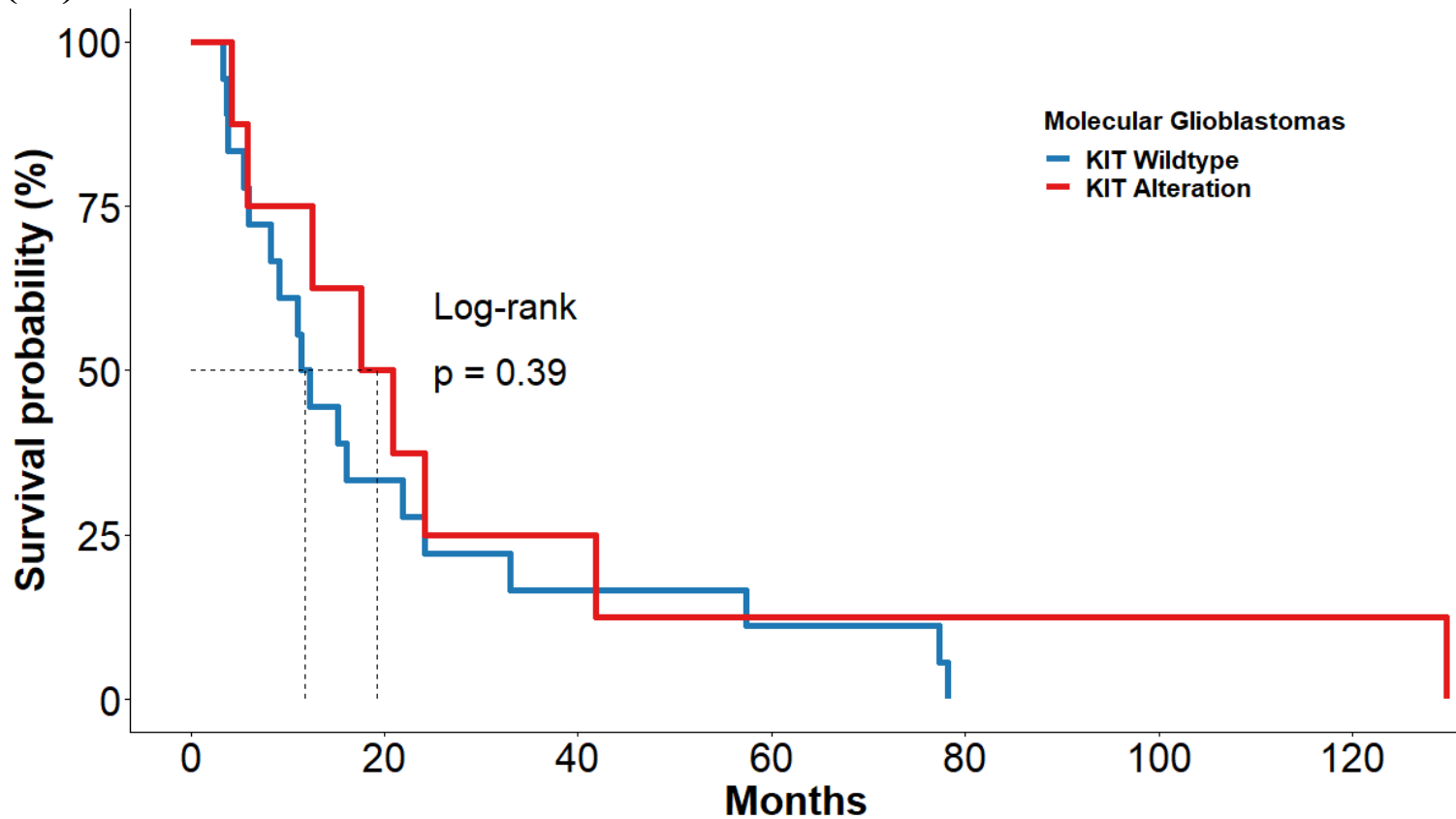
3
0

1
0

1
0

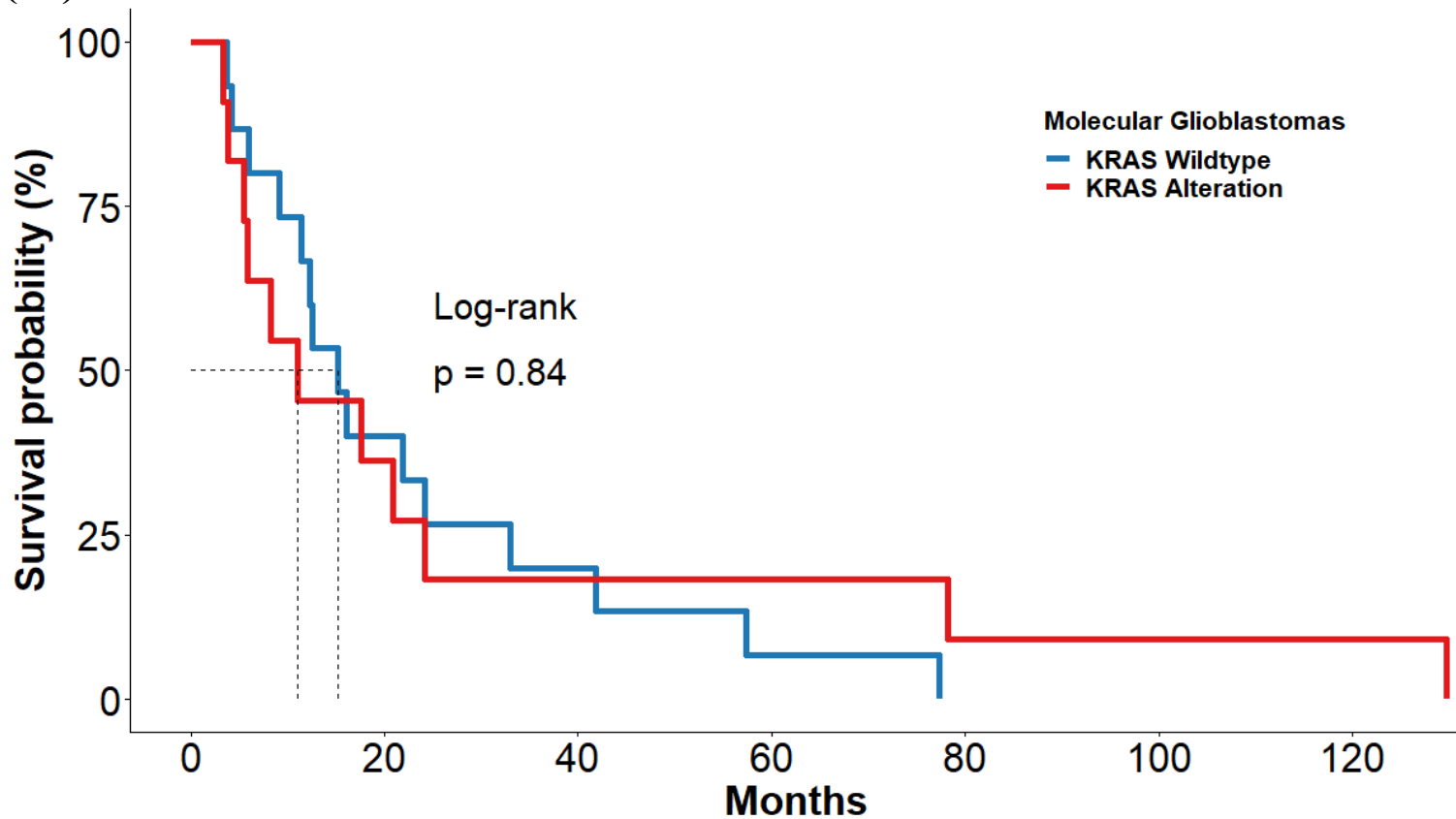
1
0

(13)



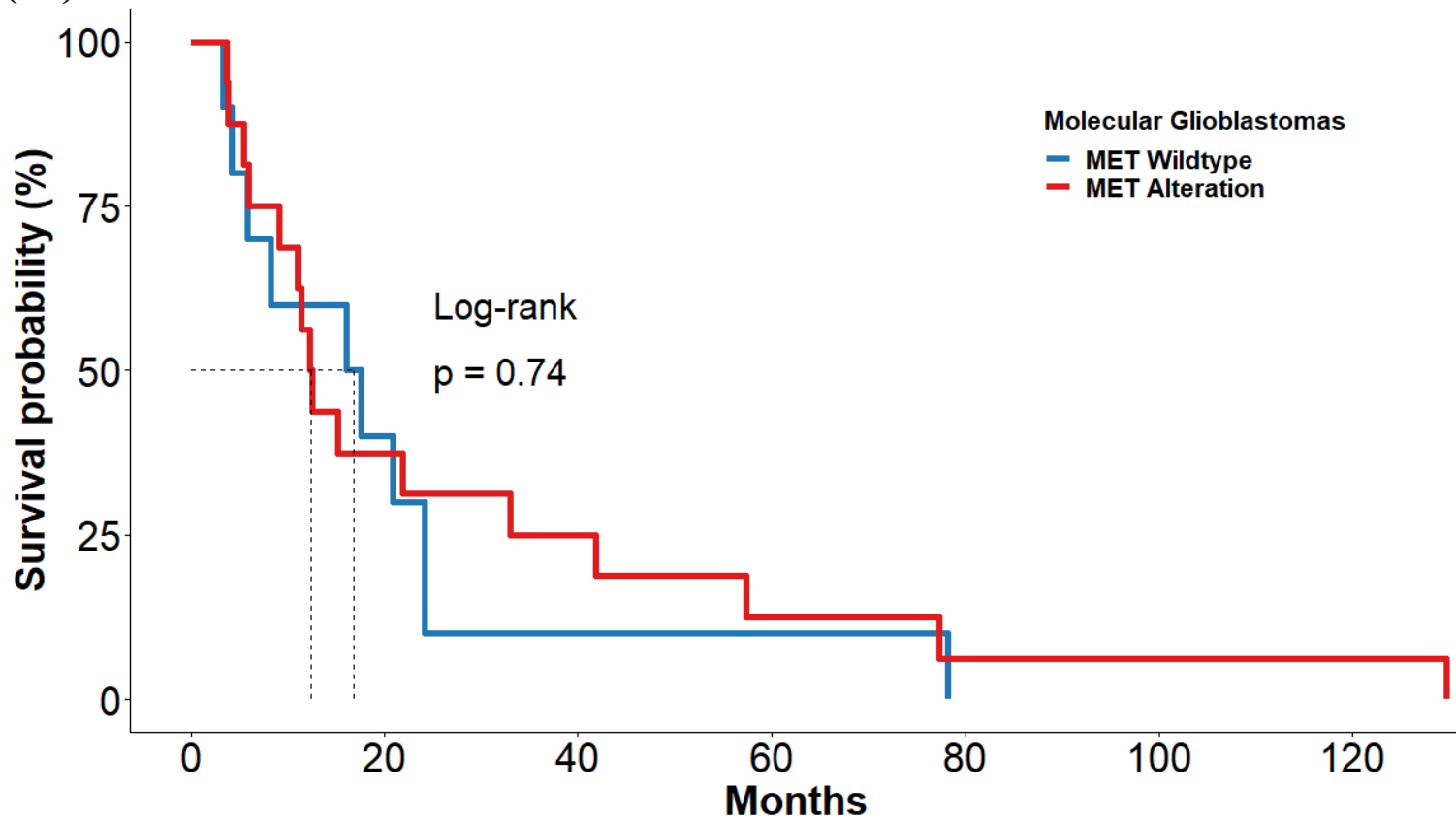
—	18	6	3	2	0	0	0
—	8	4	2	1	1	1	1

(14)



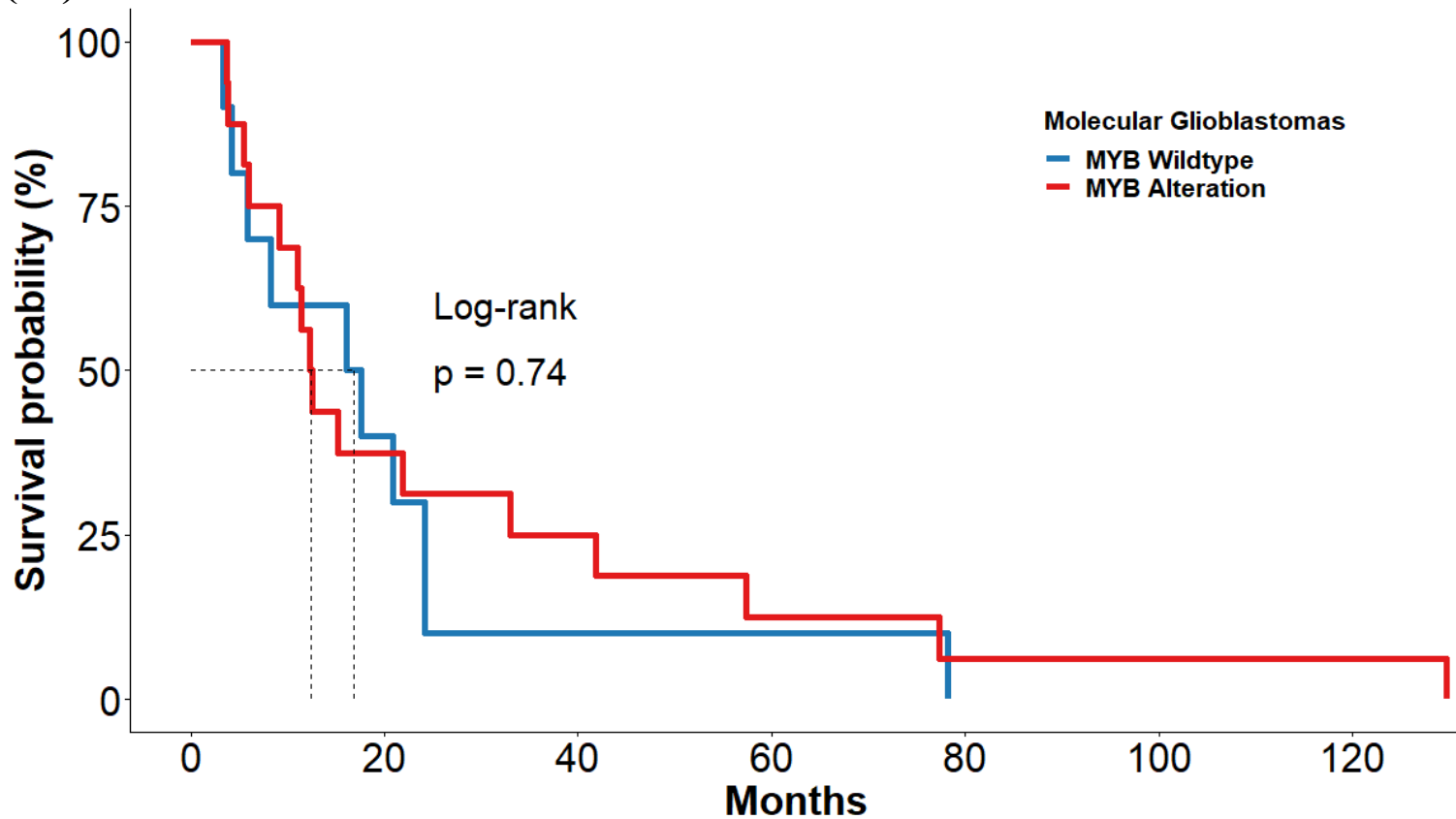
—	15	6	3	1	0	0	0
—	11	4	2	2	1	1	1

(15)



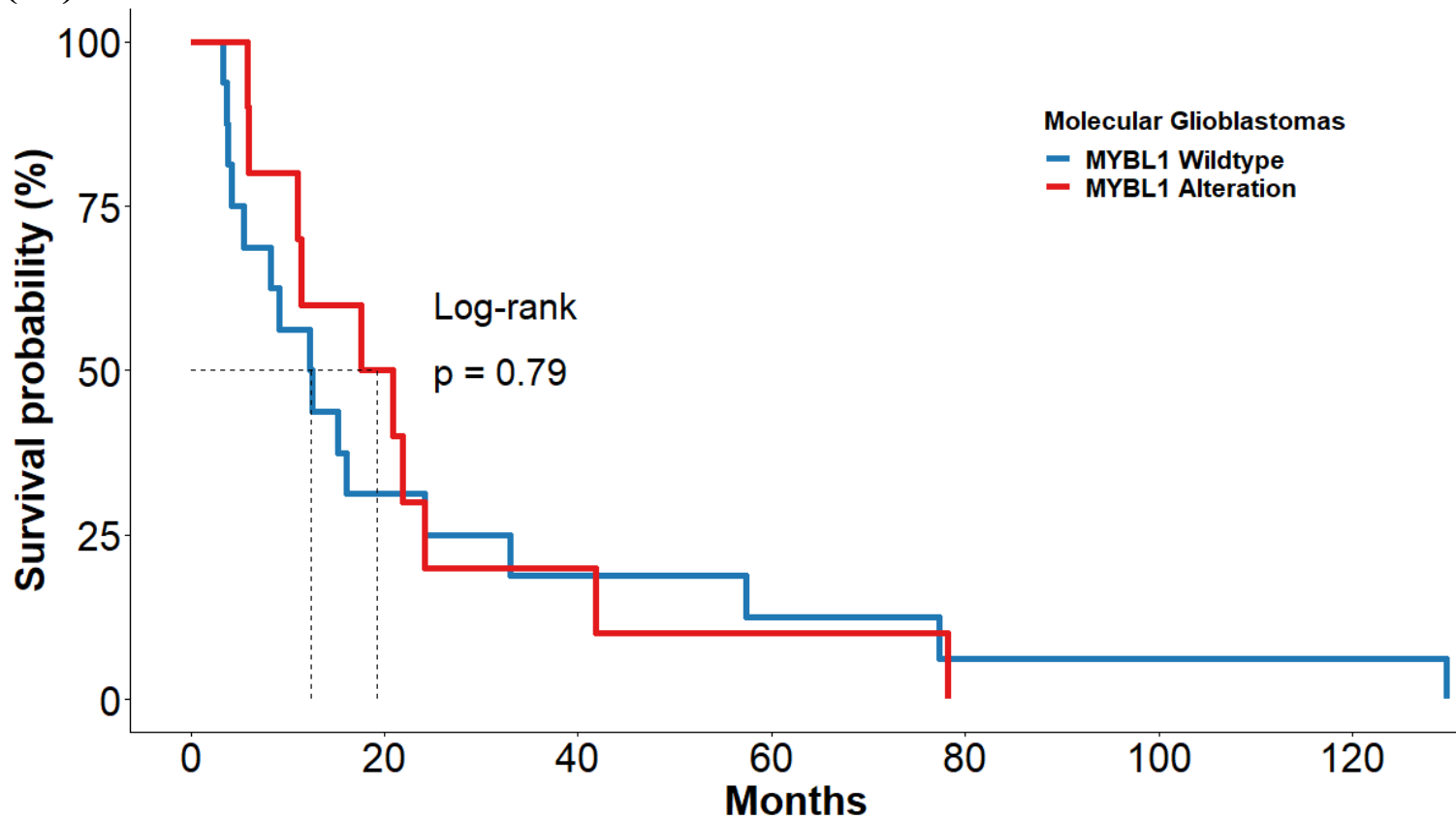
—	10	4	1	1	0	0	0
—	16	6	4	2	1	1	1

(16)



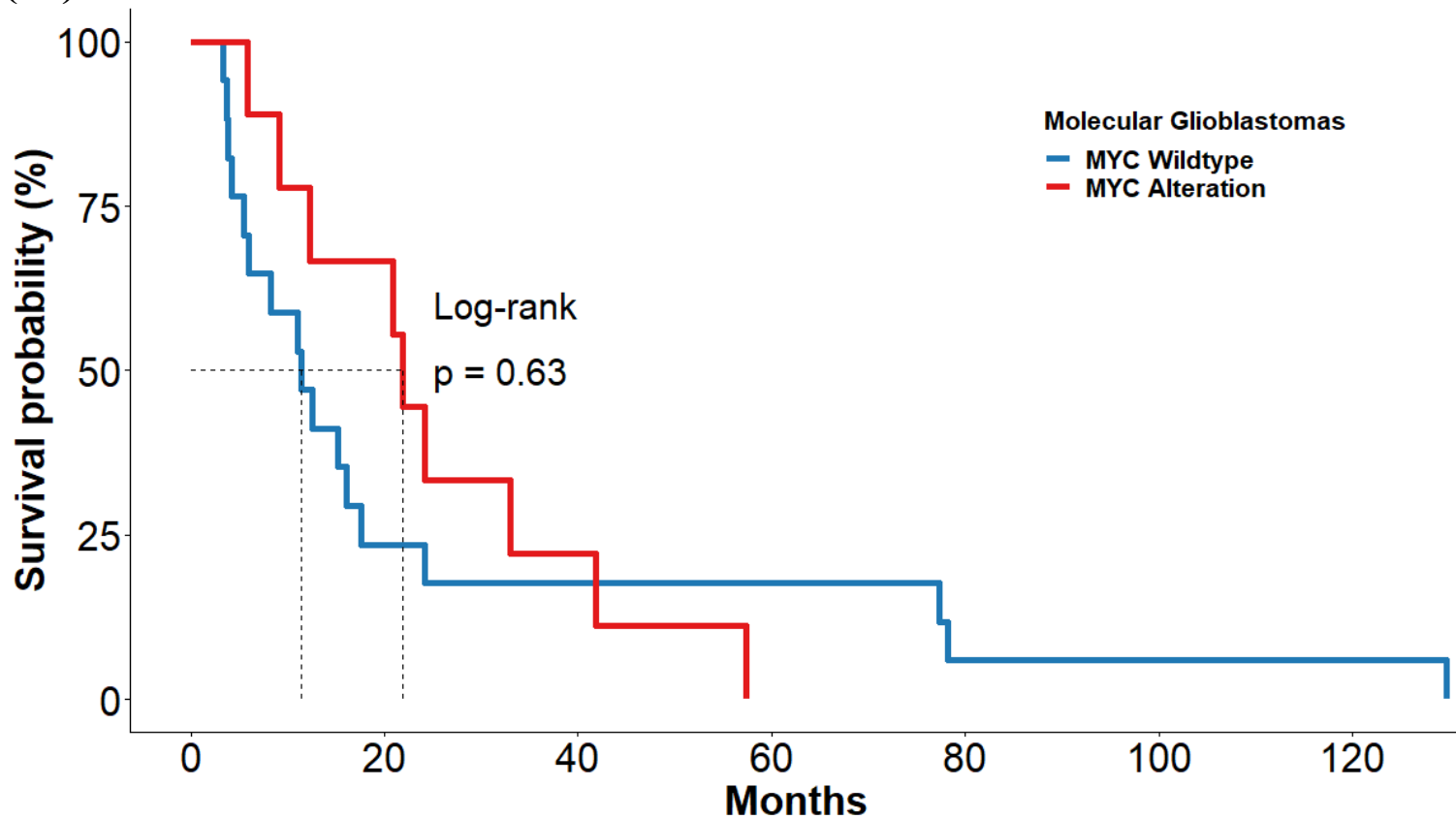
—	10	4	1	1	0	0	0
—	16	6	4	2	1	1	1

(17)



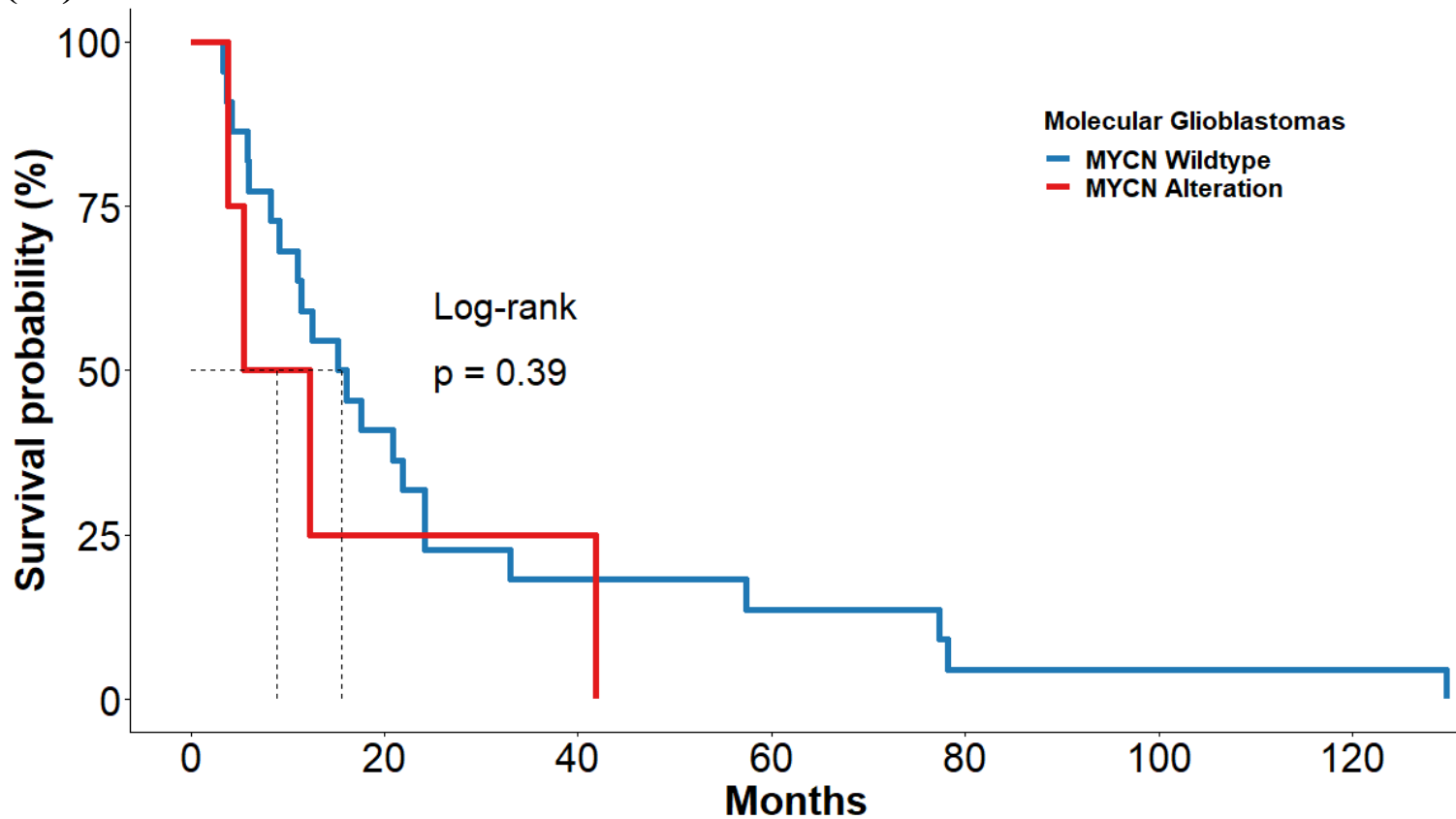
—	16	5	3	2	1	1	1
—	10	5	2	1	0	0	0

(18)



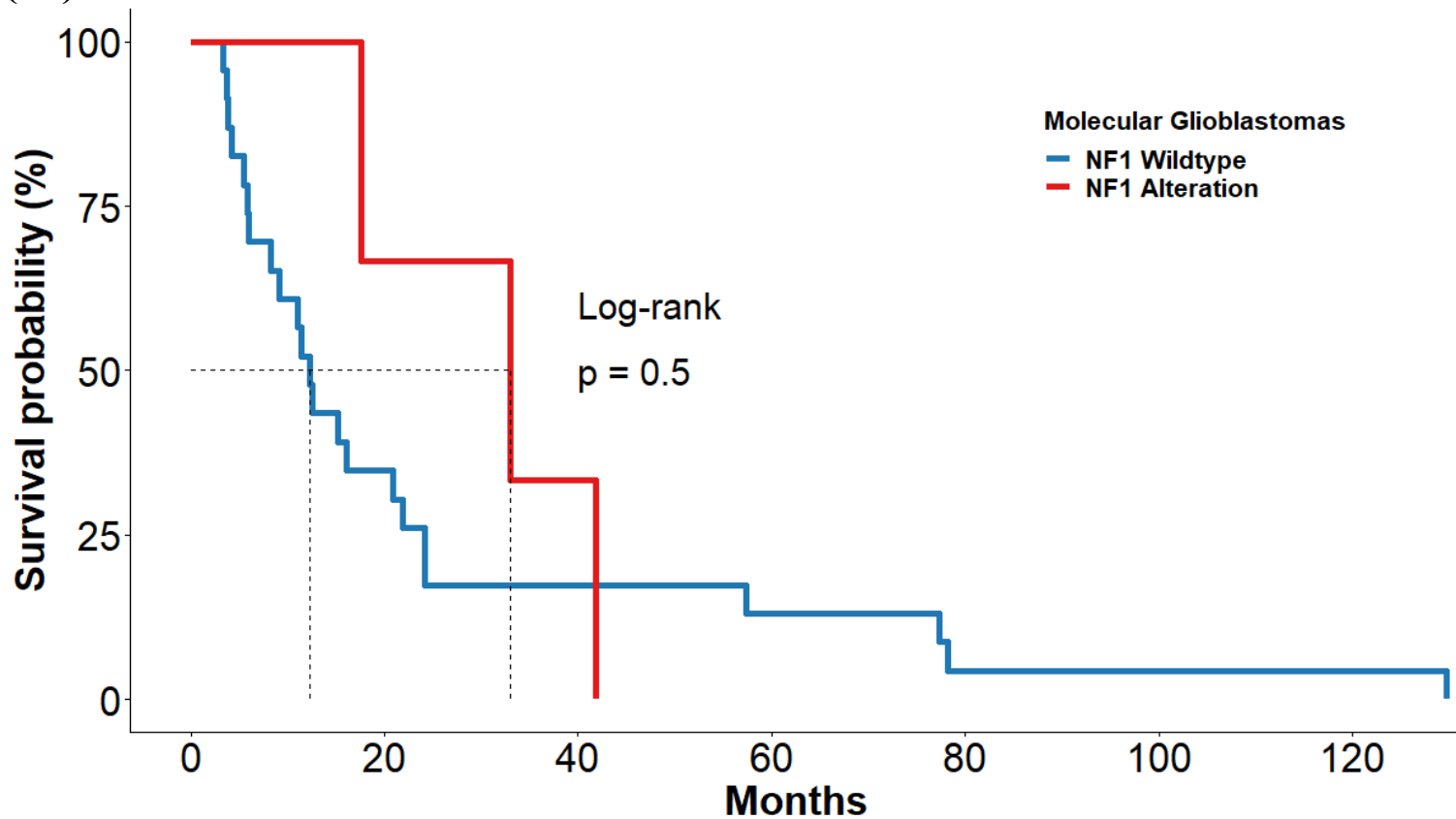
—	17	4	3	3	1	1	1
—	9	6	2	0	0	0	0

(19)



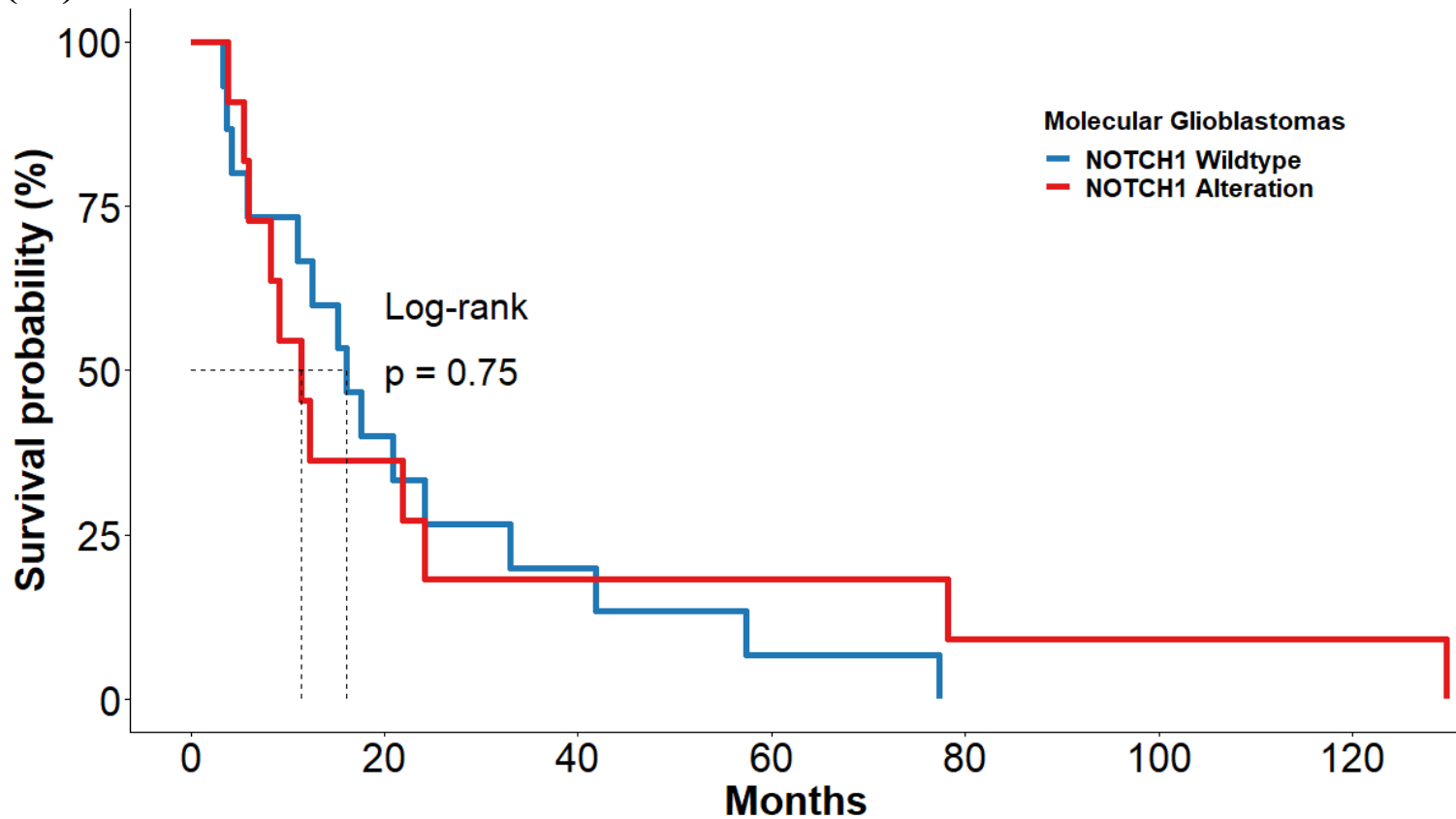
—	22	9	4	3	1	1	1
—	4	1	1	0	0	0	0

(20)



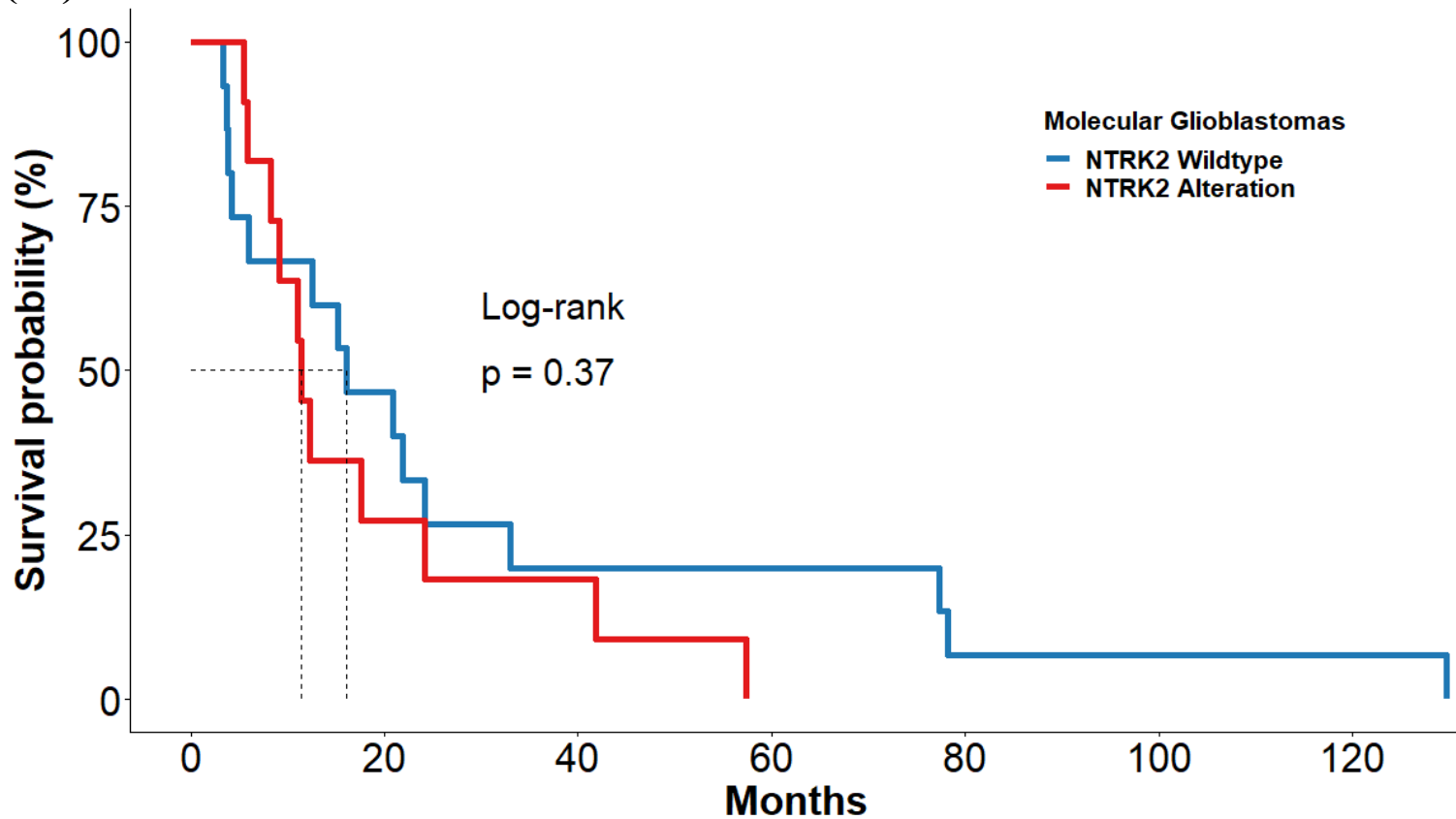
—	23	8	4	3	1	1	1
—	3	2	1	0	0	0	0

(21)



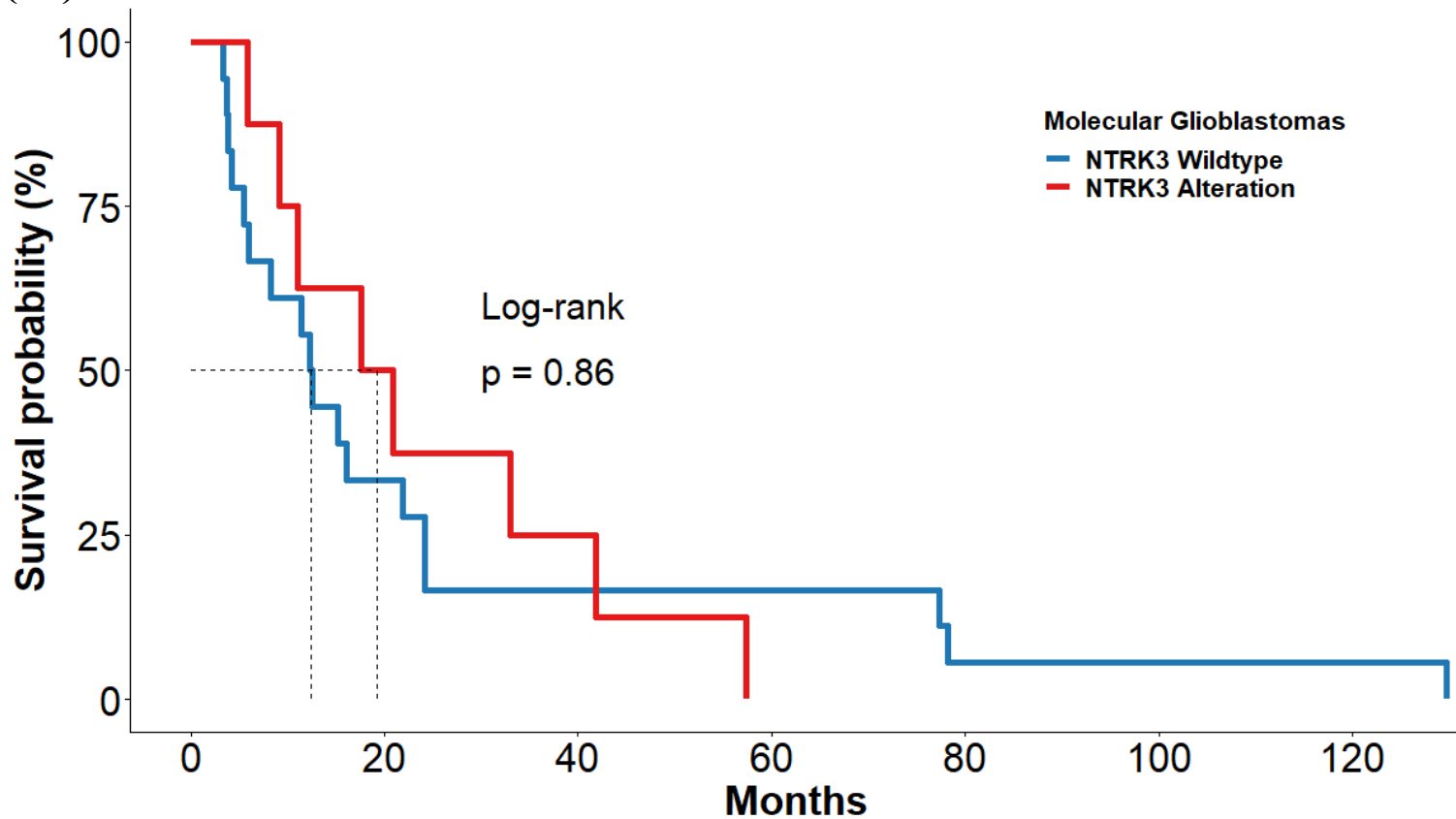
—	15	6	3	1	0	0	0
—	11	4	2	2	1	1	1

(22)



—	15	7	3	3	1	1	1
—	11	3	2	0	0	0	0

(23)



18
8

6
4

3
2

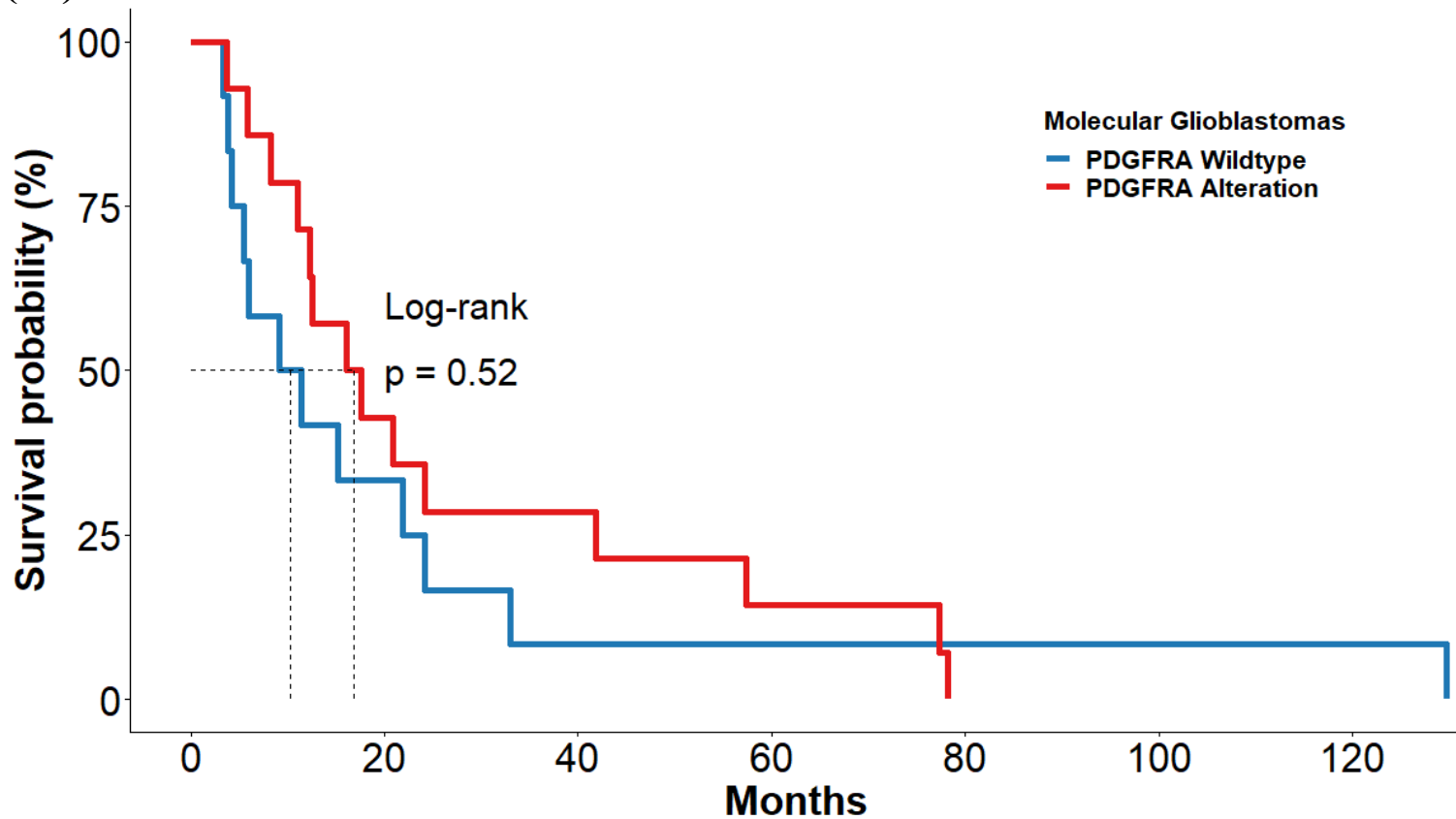
3
0

1
0

1
0

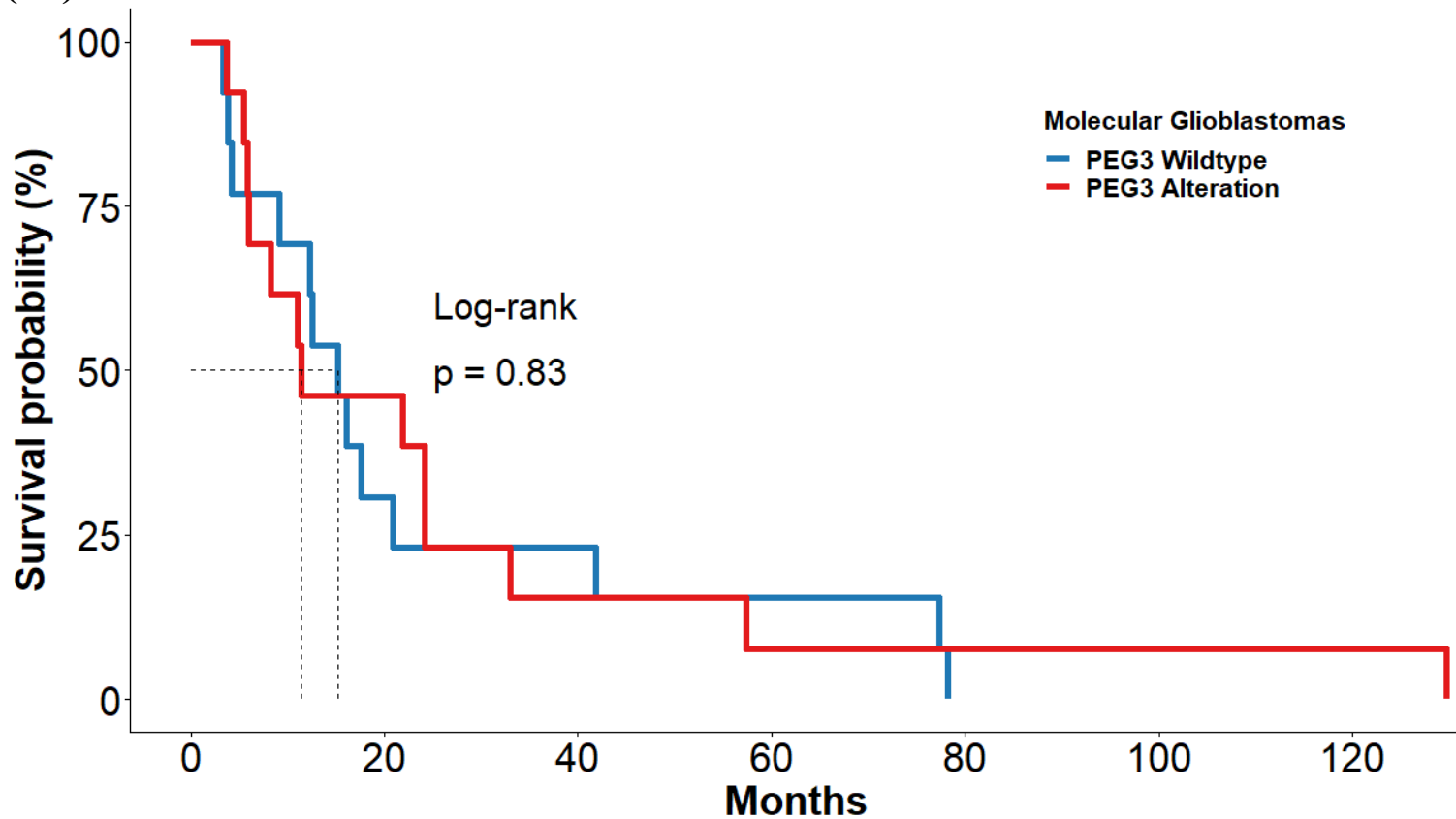
1
0

(24)



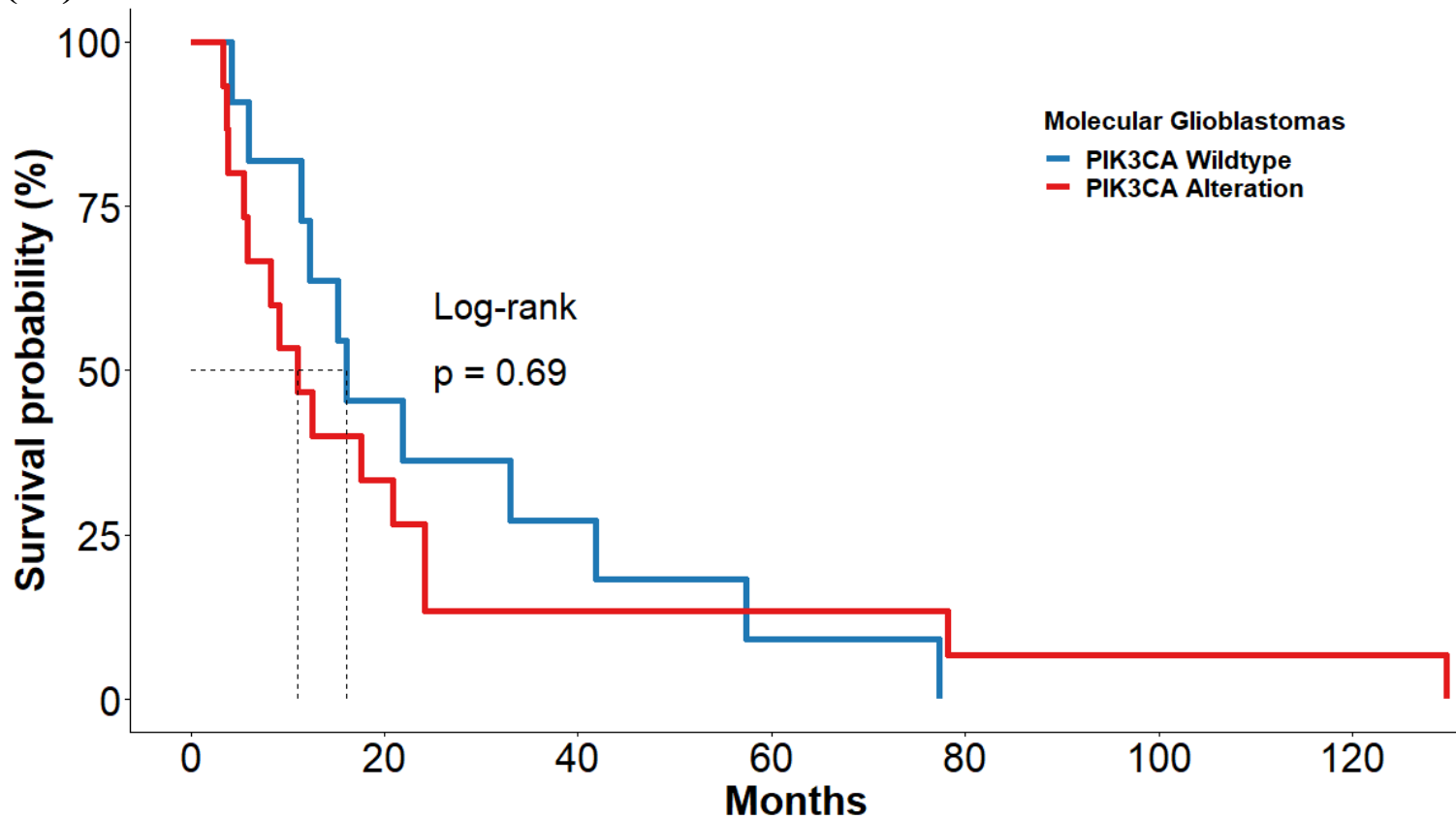
—	12	4	1	1	1	1	1
—	14	6	4	2	0	0	0

(25)



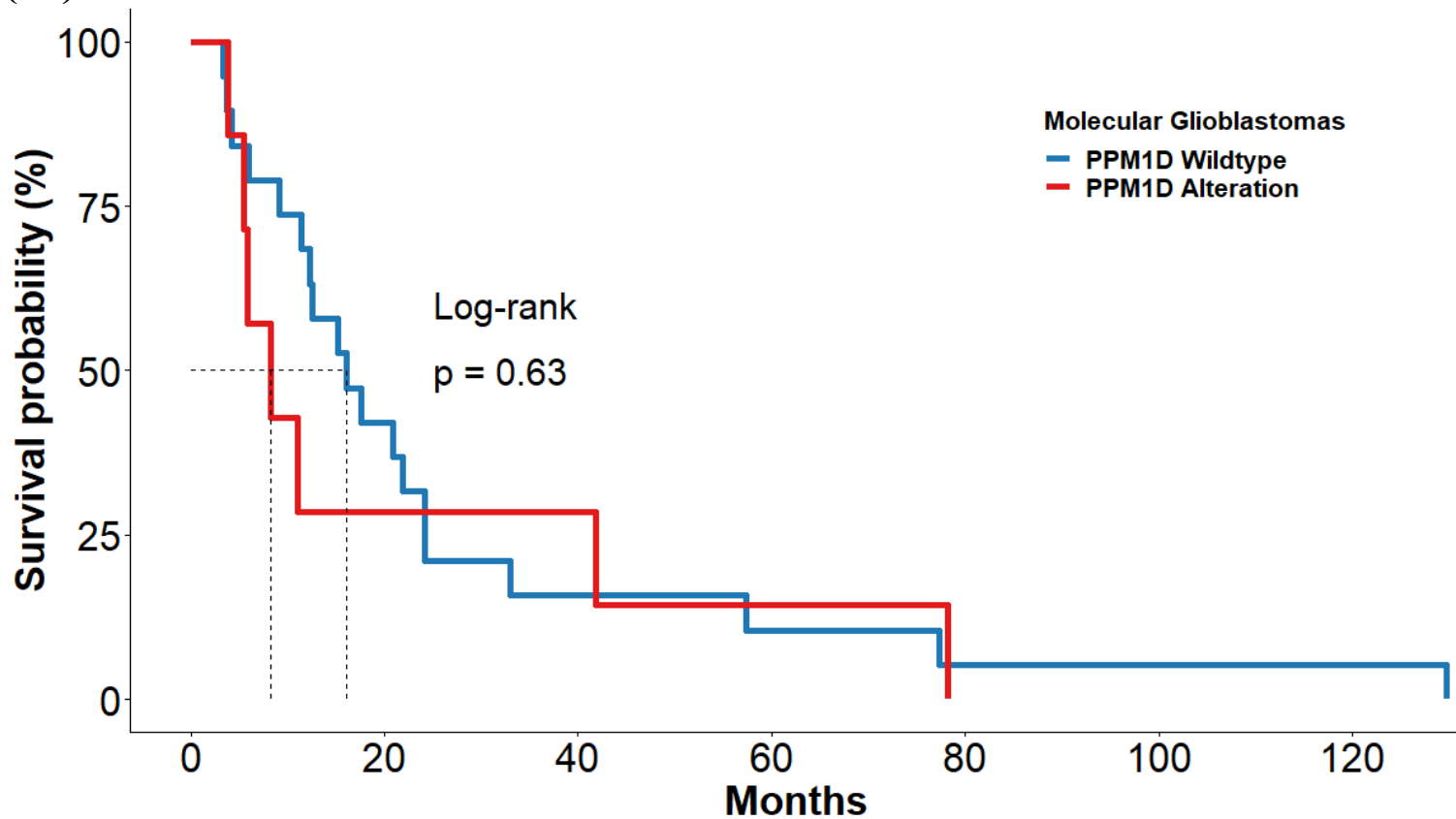
—	13	4	3	2	0	0	0
—	13	6	2	1	1	1	1

(26)



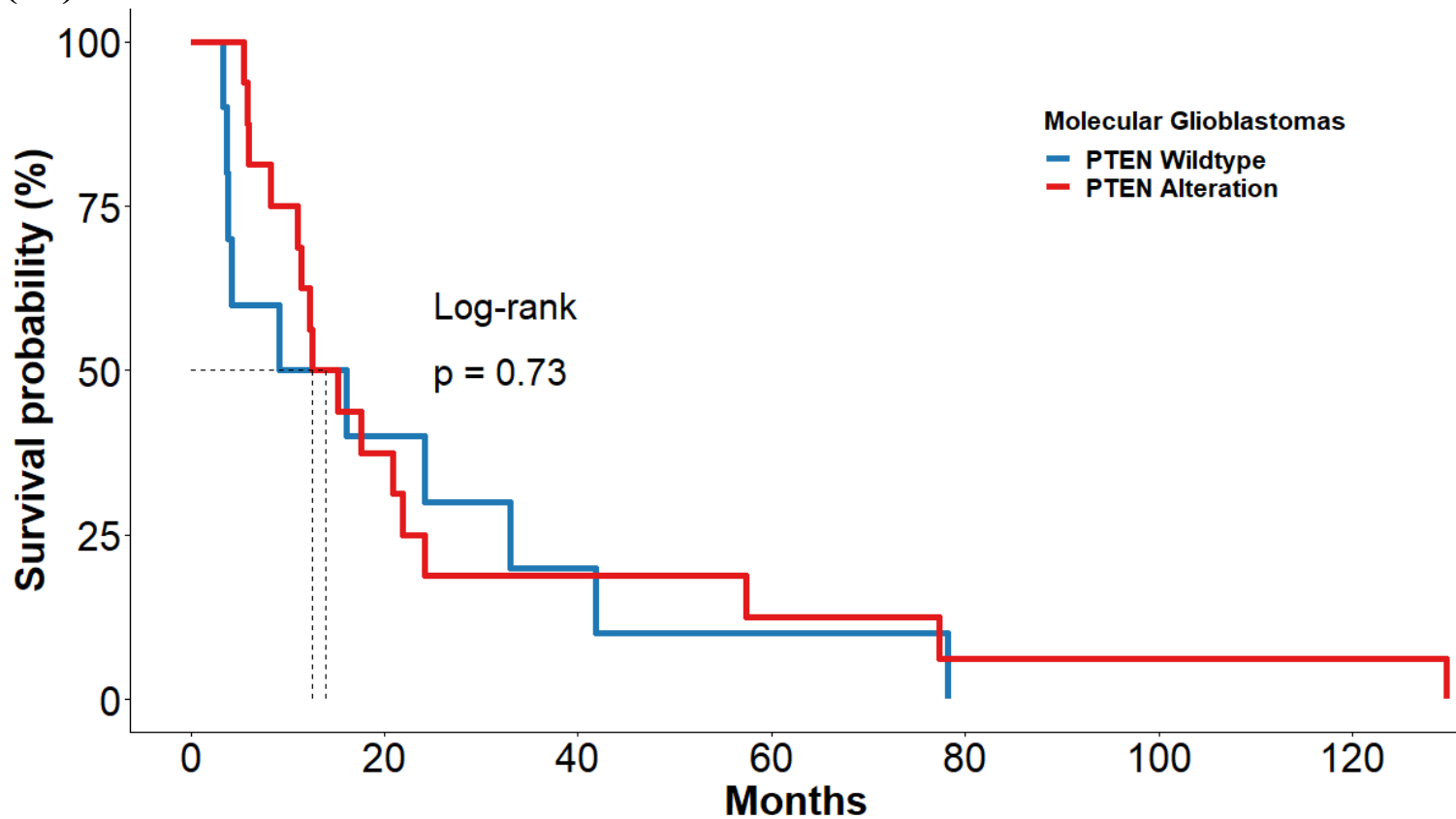
—	11	5	3	1	0	0	0
—	15	5	2	2	1	1	1

(27)



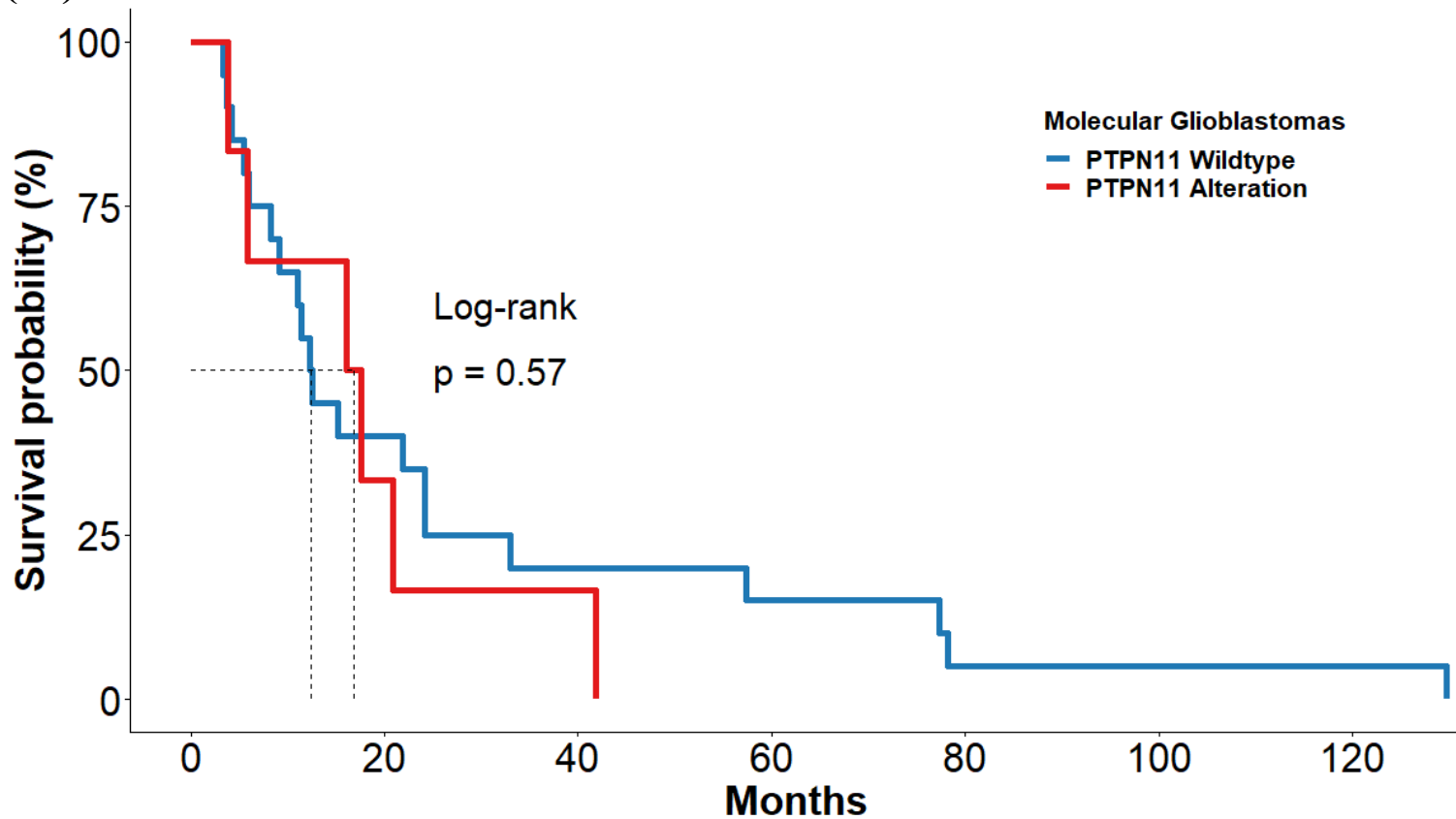
—	19	8	3	2	1	1	1
—	7	2	2	1	0	0	0

(28)



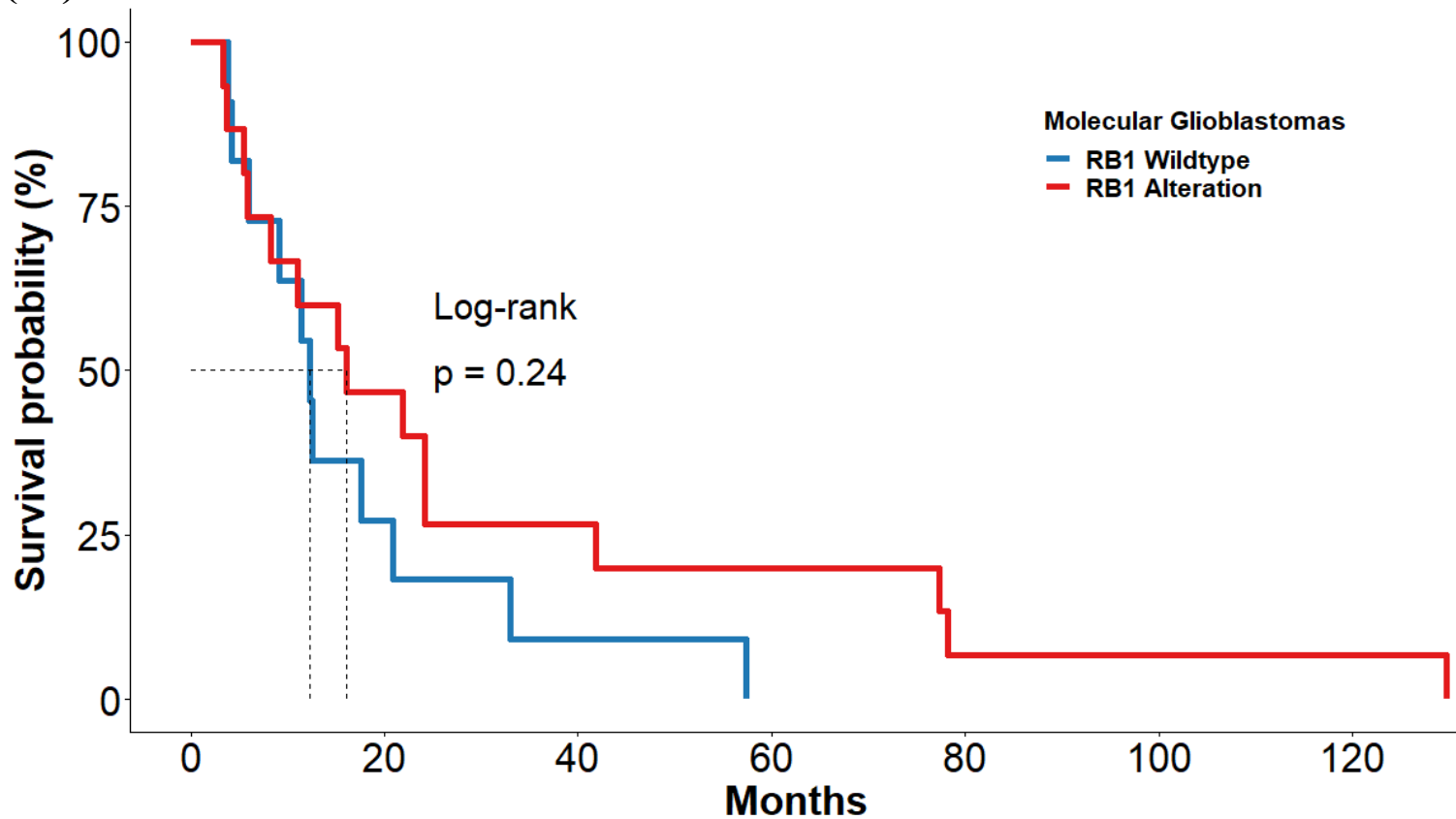
—	10	4	2	1	0	0	0
—	16	6	3	2	1	1	1

(29)



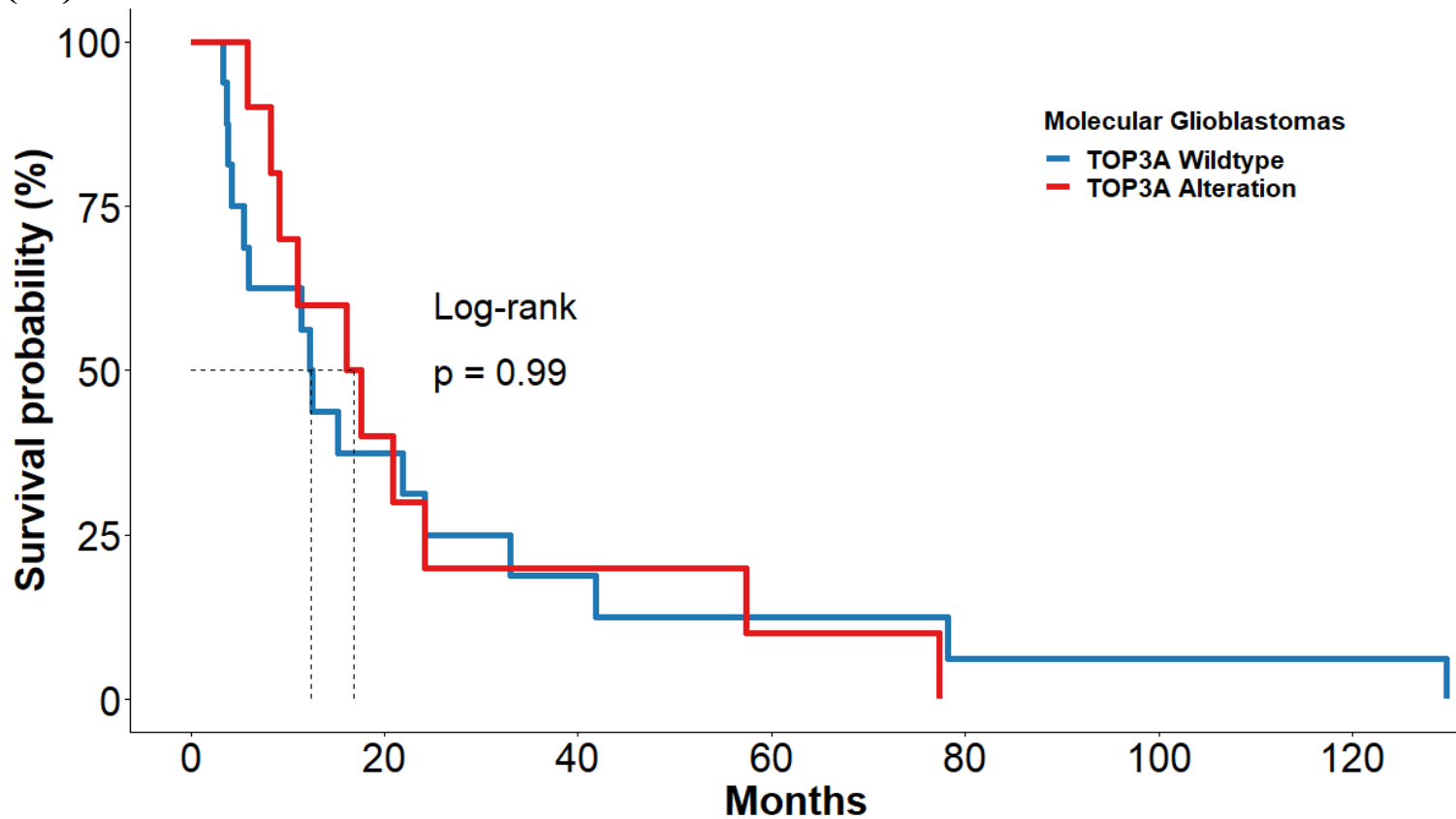
—	20	8	4	3	1	1	1
—	6	2	1	0	0	0	0

(30)



—	11	3	1	0	0	0	0
—	15	7	4	3	1	1	1

(31)



—	16	6	3	2	1	1	1
—	10	4	2	1	0	0	0