

Figure 6 : GAPDH

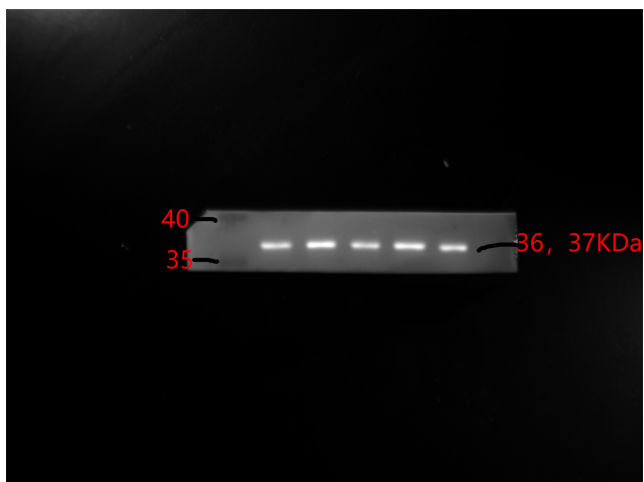


Figure 6 : -SMA

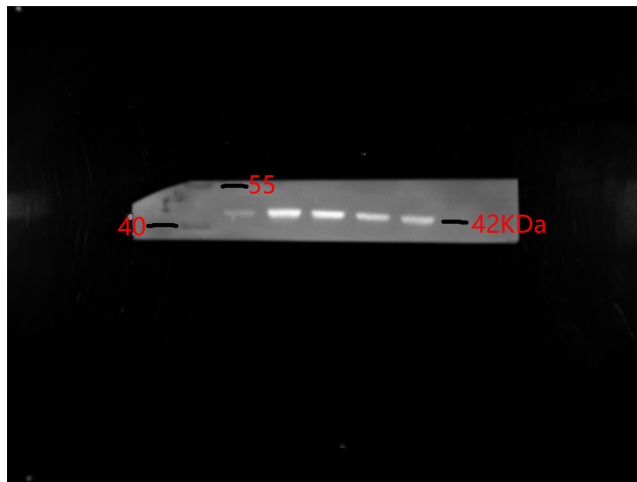
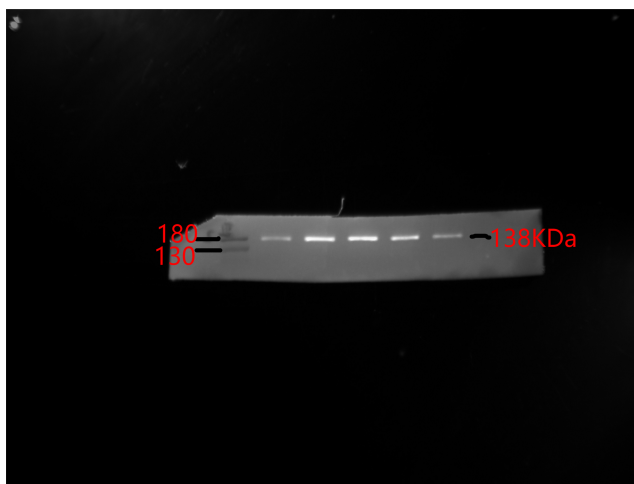


Figure 6 : Col-III



The original image of Figure 6, the pores of each band are Control, Model, nintedanib 30mg/kg, nintedanib 60mg/kg , nintedanib 120mg/kg from left to right. The samples derive from the same experiment and the same time and that gels/blots were processed in parallel. Because the experiment consisted of 5 groups

Figure8:GAPDH

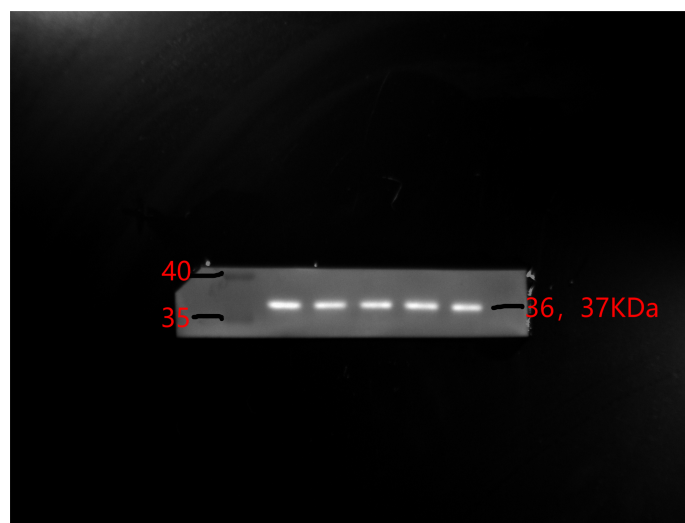


Figure8:Cleaved caspase-3

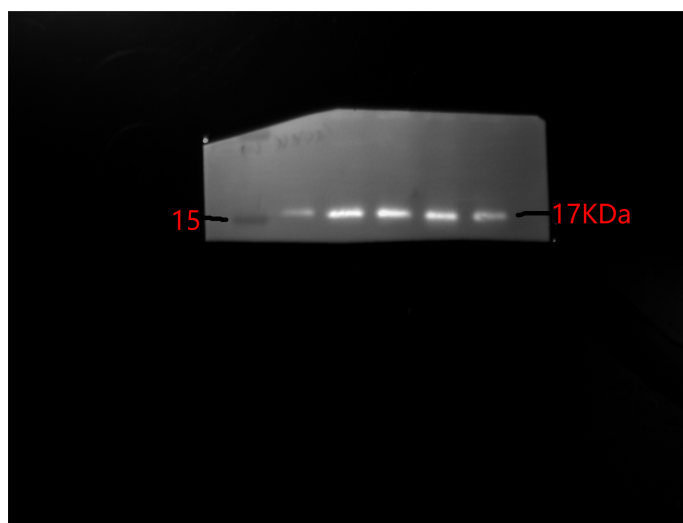
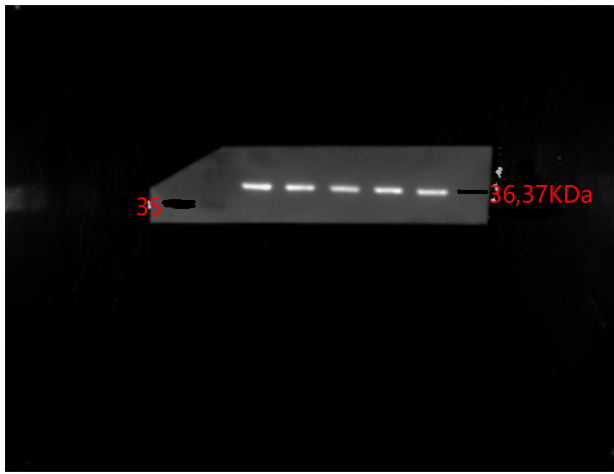


Figure 7 : GAPDH



The original image of Figure 6, the pores of each band are Control, Model, nintedanib 30mg/kg, nintedanib 60mg/kg, nintedanib 120mg/kg from left to right. The samples derive from the same experiment and the same time and that gels/blots were processed in parallel. Because the experiment consisted of 5 groups

Figure 7 : PI3K

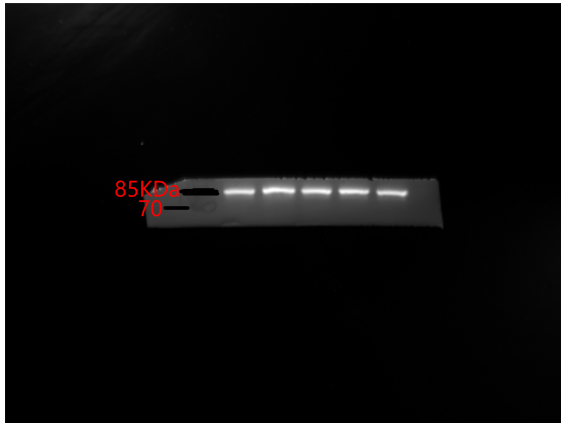


Figure 7 : p-PI3K

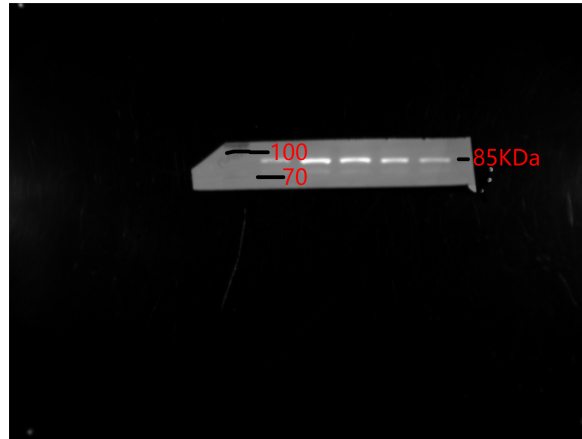


Figure 7 : AKT

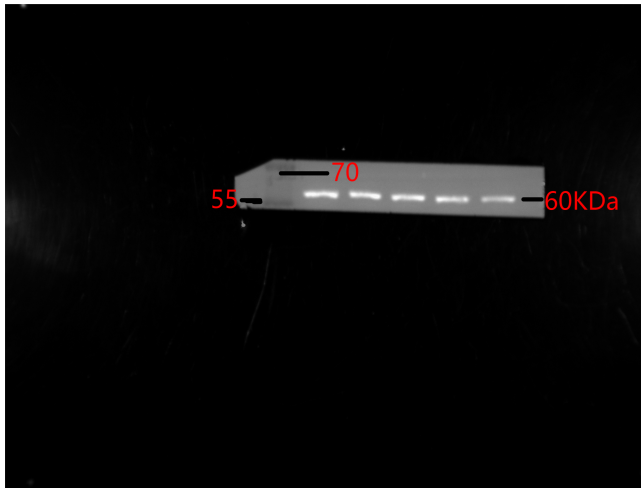


Figure 7 : p-AKT

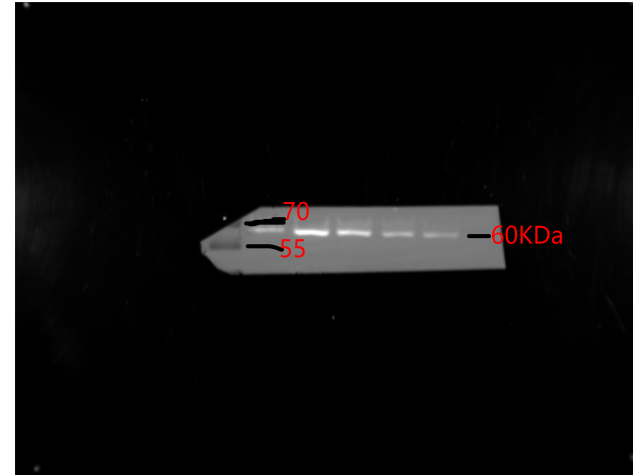


Figure 7 : MTOR

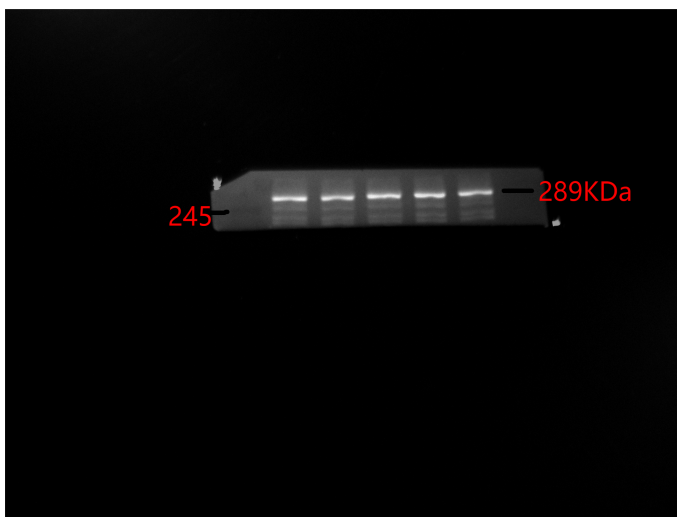


Figure 7 : p-MTOR

