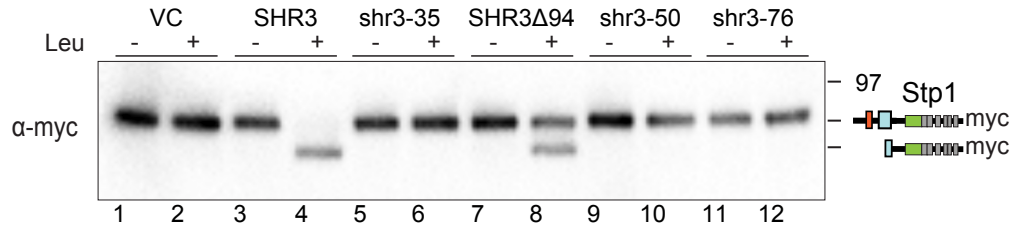


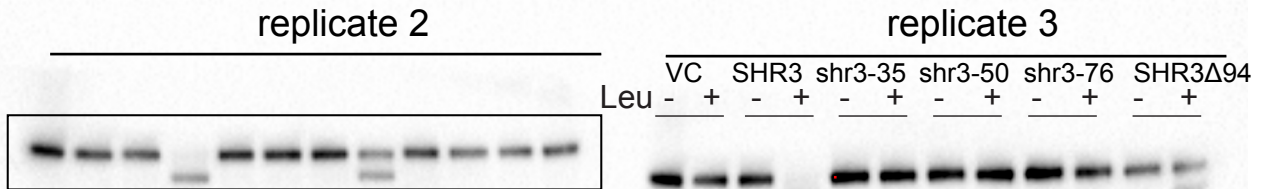
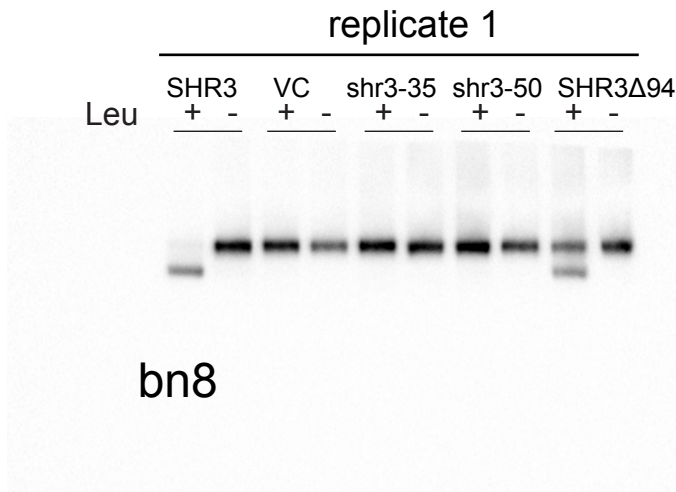
# Raw3

Fig. 3C

Raw data - 3 blots (bn8-10) with 3 biological replicates to assess function of Shr3, shr3-35, shr3-50, shr3-76 and Shr3 $\Delta$ 94 proteins. Leucine-induce cleavage of Stp1 provides a functional output. Blots were developed with  $\alpha$ -myc. Fig. 3C.



replicate 2 from bn9  
was used to prepare Fig 3C



bn9

bn10