

# Raw6

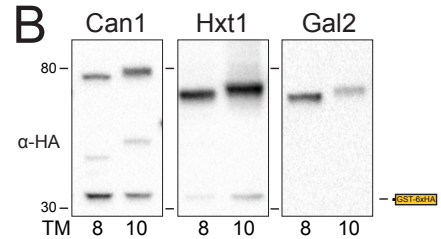
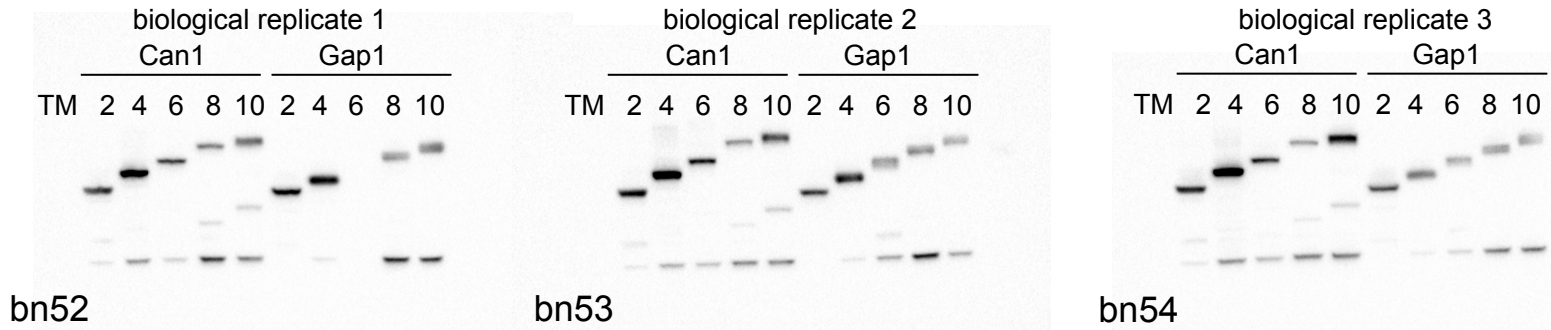
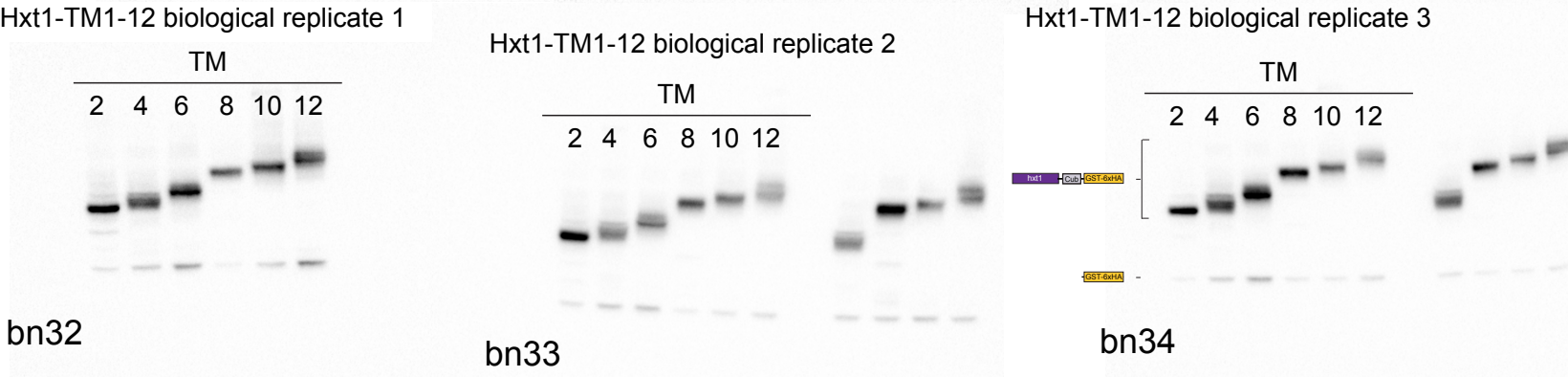


Fig 6B:  
 Can1 (replicate 1, bn52);  
 Hxt1 (replicate 1, bn32);  
 and Gal2 (replicate 1, bn25)

Raw data - 3 blots (bn52-54) with 3 biological replicates to quantitate split-Ub interactions between Shr3-NubA with truncated Can1(TM8 & 10)-Cub; Gap1-Cub truncions were included as contol. Blots developed with  $\alpha$ -HA; quantitative data plotted in Fig. 6C.



Raw data - 3 blots (bn32-34) with 3 biological replicates to quantitate split-Ub interactions between Shr3-NubA with truncated Hxt1(TM8 & 10)-Cub. Blots developed with  $\alpha$ -HA; quantitative data plotted in Fig. 6C.



Raw data - 3 blots (bn25-27) with 3 biological replicates to quantitate split-Ub interactions between Shr3-NubA with truncated Gal2(TM8 & 10)-Cub. Blots developed with  $\alpha$ -HA; quantitative data plotted in Fig. 6C.

