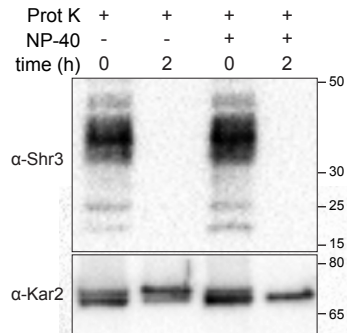


# RawS5A

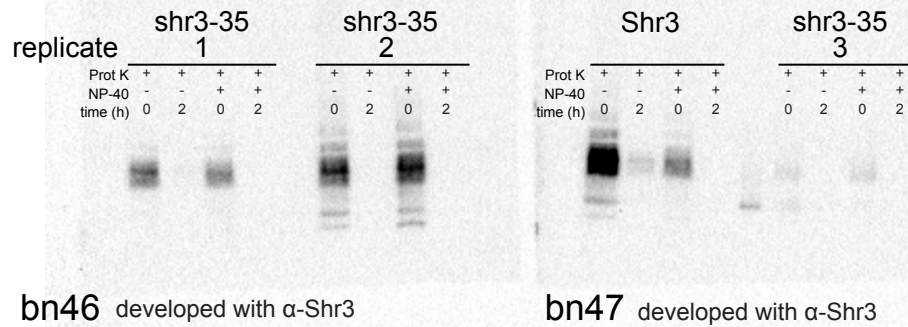
The topology of shr3-35-NubA and Shr3-NubA assessed by proteinase K digestion; Kar2 was used as luminal control; blots were developed with  $\alpha$ -Shr3 and  $\alpha$ -Kar2 as indicated

Raw data - 4 blots (bn46-49) with 3 biological replicates

**A**

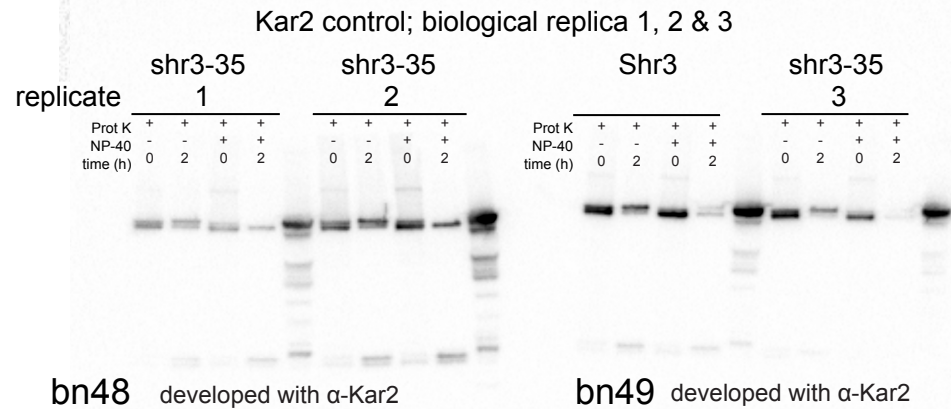


bn46 and bn48 with replicate 2 were used to prepare Fig. S5A



bn46 developed with  $\alpha$ -Shr3

bn47 developed with  $\alpha$ -Shr3



bn48 developed with  $\alpha$ -Kar2

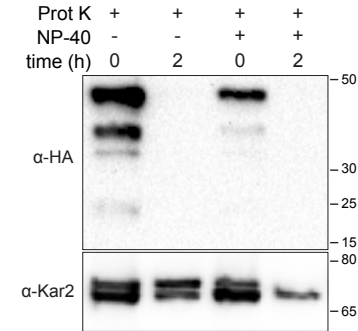
bn49 developed with  $\alpha$ -Kar2

# RawS5B

The topology of gap1-TM2-Cub assessed by proteinase K digestion; Kar2 was used as luminal control; blots were developed with  $\alpha$ -HA and  $\alpha$ -Kar2 as indicated

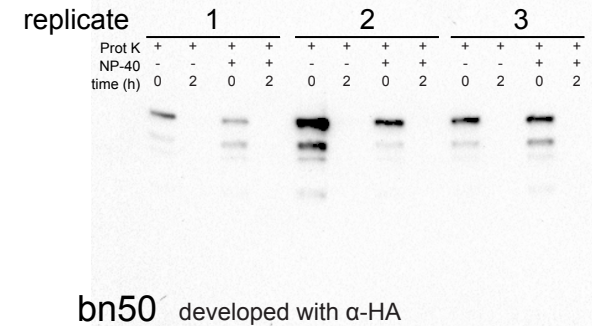
Raw data - 2 blots (bn50-51) with 3 biological replicates

**B**



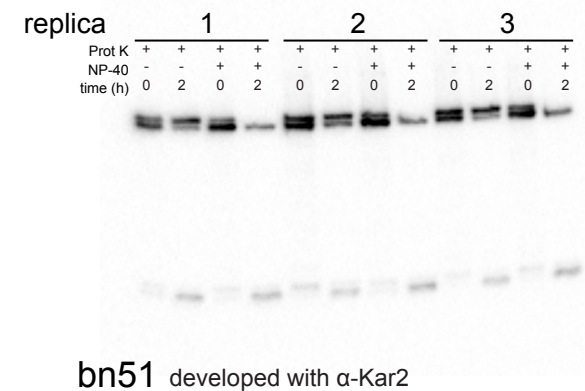
replicate 2; bn50 and bn51 used to prepare Fig. S5B

gap1-TM2; biological replicates 1, 2 & 3



bn50 developed with  $\alpha$ -HA

Kar2 control; biological replicates 1, 2 & 3



bn51 developed with  $\alpha$ -Kar2