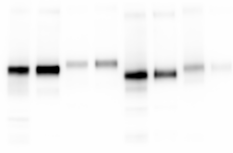


# RAW S6Fig Gap1-8&10TM co-IP with Shr3-GFP

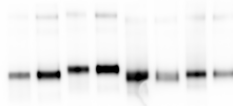
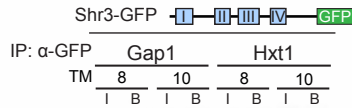
## Raw data - blots with 3 biological replicates

Blots to establish validity of specific interactions between Shr3-GFP and gap1-8TM-Cub-GST-6xHA and gap1-10TM-Cub-GST-6xHA  
 Replicates 2 used to prepare S6Fig.

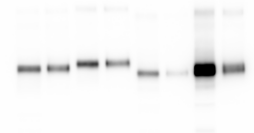
developed with  $\alpha$ -HA  
 biological replicate 1



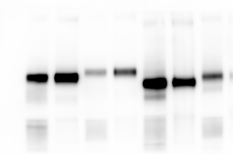
biological replicate 2



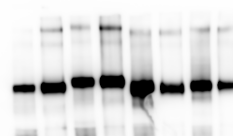
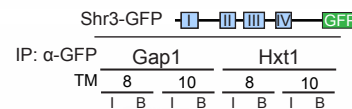
biological replicate 3



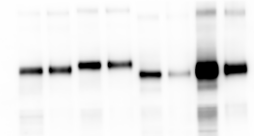
developed with  $\alpha$ -GFP  
 biological replicate 1



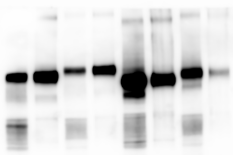
biological replicate 2



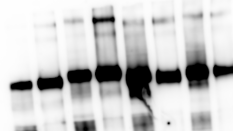
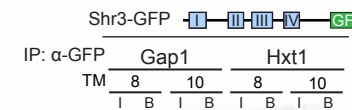
biological replicate 3



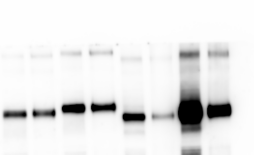
developed with  $\alpha$ -Dpm1  
 biological replicate 1



biological replicate 2



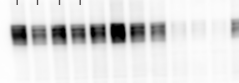
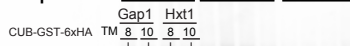
biological replicate 3



Blots showing only the Input lanes of the above used lysates

developed with  $\alpha$ -GFP

biological replicate 1 2 3



developed with  $\alpha$ -Dpm1

1 2 3

