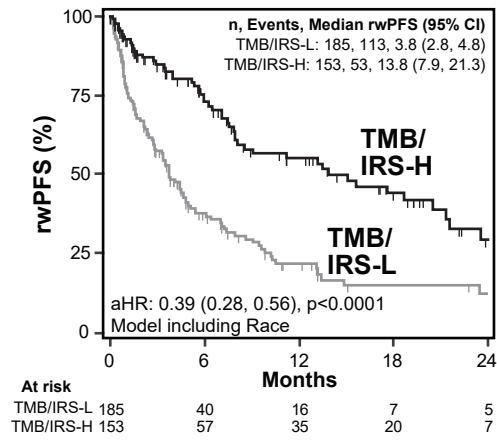


Supplementary Figure S5

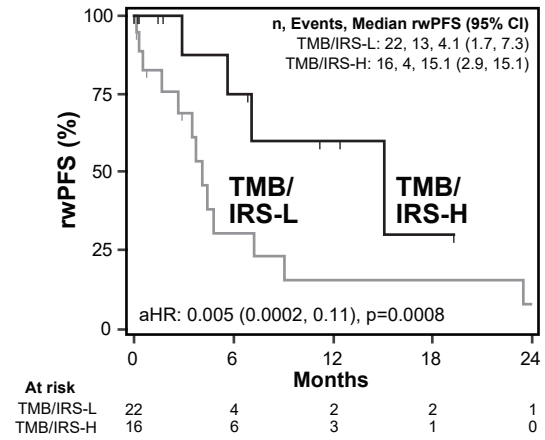
A Self-reported race validation cohort

(Current validation cohort subgroup; n=338)



B

Non-European subgroup



Supplementary Figure S5. Current validation cohort subgroup analysis of the self-reported race validation cohort A. As in **Figure 3D**, except limited to just those eligible patients not included in the previous IRS validation cohort. Anti-PD-(L)1 monotherapy rwPFS stratified by combined TMB and IRS status (TMB-H or IRS-H [TMB/IRS-H; black] vs. TMB-L and IRS-L [TMB/IRS-L; gray] is shown (left) by unadjusted Kaplan Meier analysis, with the adjusted hazard ratio (aHR; adjusted for age, sex assigned at birth, line of therapy, tumor type, anti-PD-[L]1 therapy type, and self-reported race [non-European, Unknown or European]), 95% confidence interval (95% CI) and p value for TMB/IRS status (TMB/IRS-H vs. TMB/IRS-L) shown. The number (n) of patients, events, and median rwPFS (with 95% CI) for each group are shown. **B.** Anti-PD-(L)1 monotherapy rwPFS stratified by TMB/IRS status is shown by unadjusted Kaplan Meier analysis for the non-European subgroup of this cohort.