

**Western blot images used for Fig 2B**

Blot was cut in half and top half probed with anti-HA and bottom half with anti-Toxo.

**A)** Inverted colorimetric image showing prestained molecular weight marker for top half of blot.

**B)** Chemiluminescent signal for anti-HA-HRP.

**C)** Merge of images in A and B.

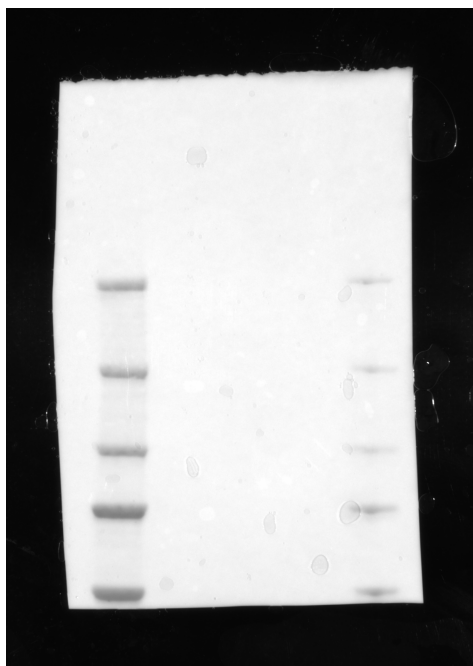
**D)** Inverted colorimetric image showing prestained molecular weight marker for bottom half of blot.

**E)** Chemiluminescent signal for rabbit-anti-toxo detected with anti-rabbit-HRP.

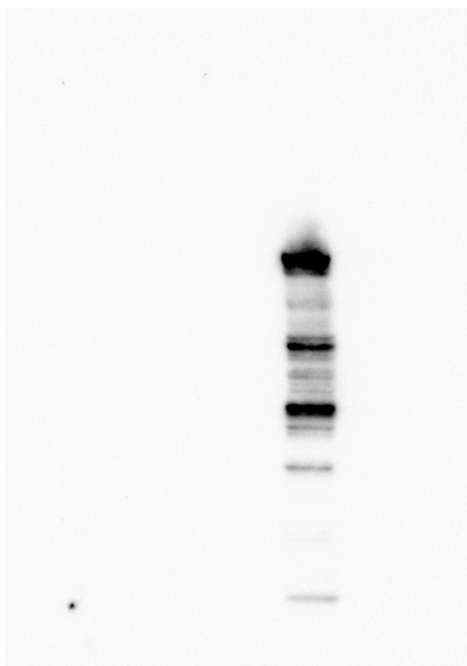
**F)** Merge of images in D and E.

Lane numbers; 1, RH $\Delta$ Ku80, 2, RH $\Delta$ GRA57, RH $\Delta$ GRA57::GRA57-HA.

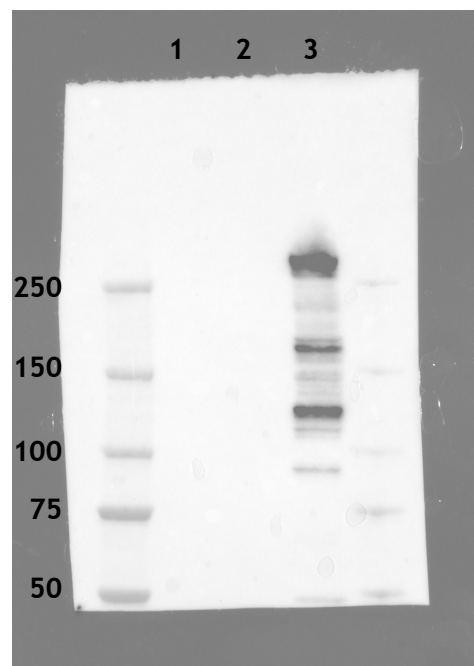
**A**



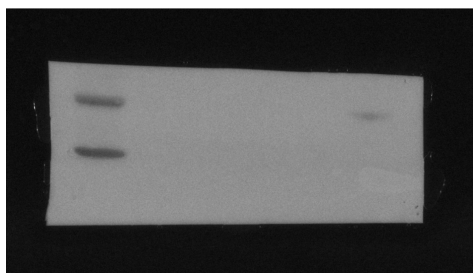
**B**



**C**



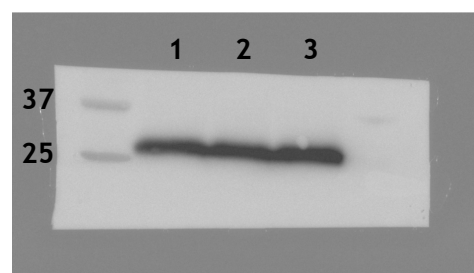
**D**



**E**



**F**



### Western blot images used for Fig 3D

Blot was cut in half and top half probed with anti-V5, then anti-HA, and bottom half with anti-Toxo.

A) Inverted colorimetric image showing prestained molecular weight marker for top half of blot.

B) Chemiluminescent signal for rabbit-anti-V5 detected with anti-Rabbit-HRP.

C) Merge of images in A and B.

D) Inverted colorimetric image showing prestained molecular weight marker for top half of blot.

E) Chemiluminescent signal for anti-HA-HRP.

F) Merge of images in D and E.

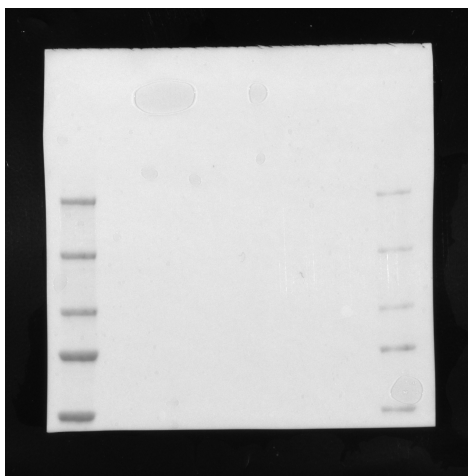
G) Inverted colorimetric image showing prestained molecular weight marker for bottom half of blot.

H) Chemiluminescent signal for rabbit-anti-toxo detected with anti-rabbit-HRP.

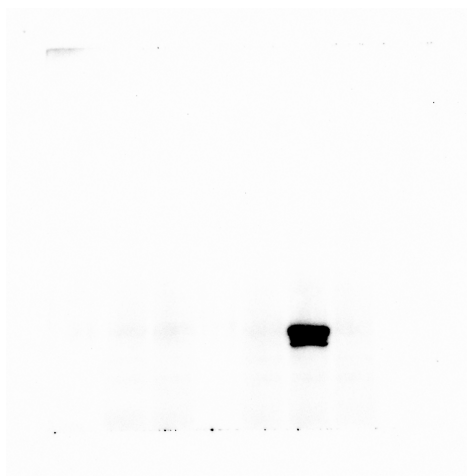
I) Merge of images in D and E.

Lane numbers: 1-RH $\Delta$ Ku80, 2-RHGRA57-HA, 3-empty, 4- RH $\Delta$ Ku80, 5-RHGRA70-V5, 6- unrelated to this report.

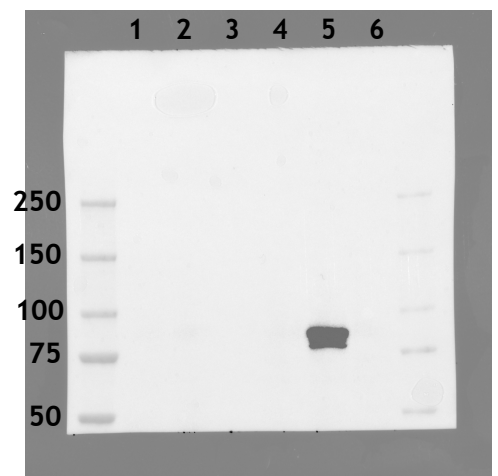
**A**



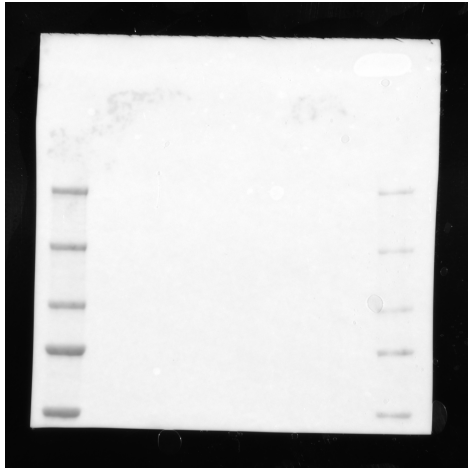
**B**



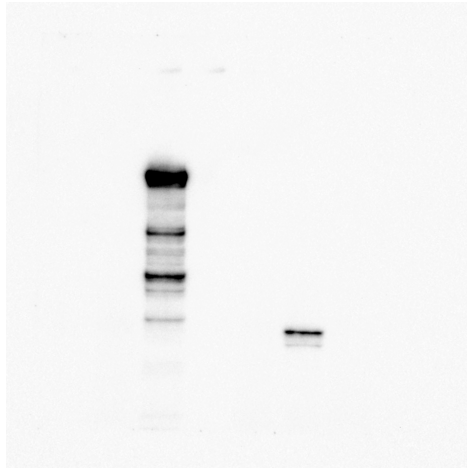
**C**



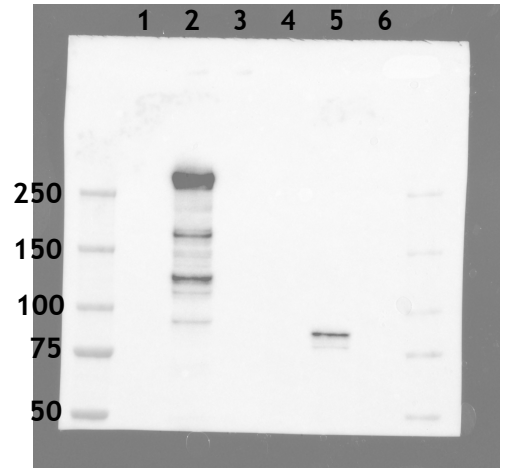
**D**



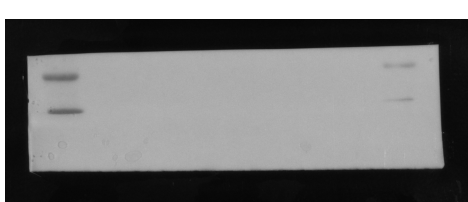
**E**



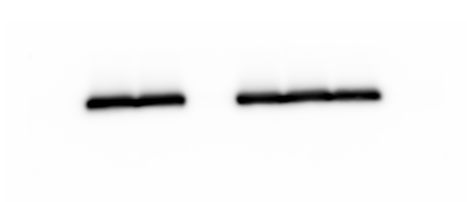
**F**



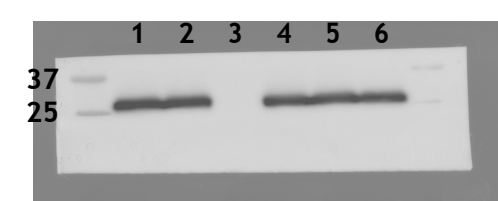
**G**



**H**

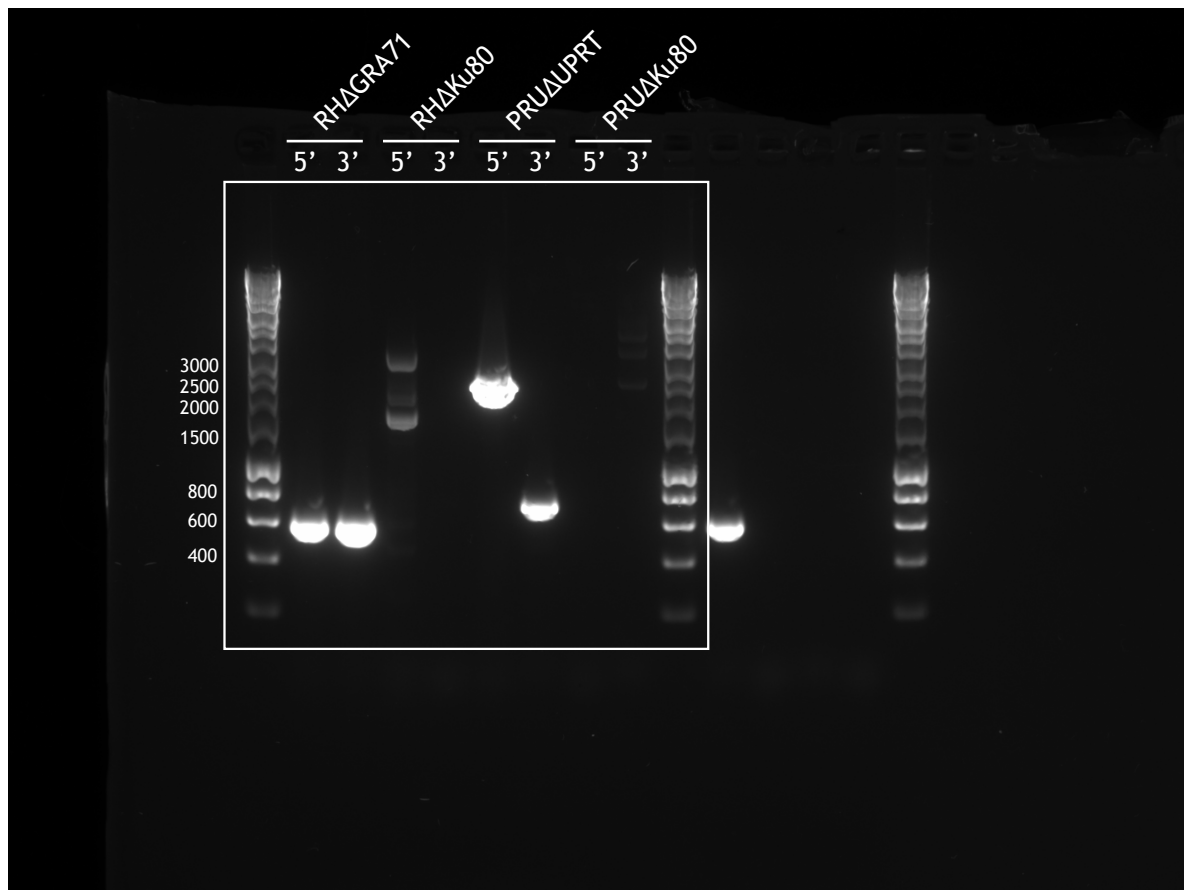
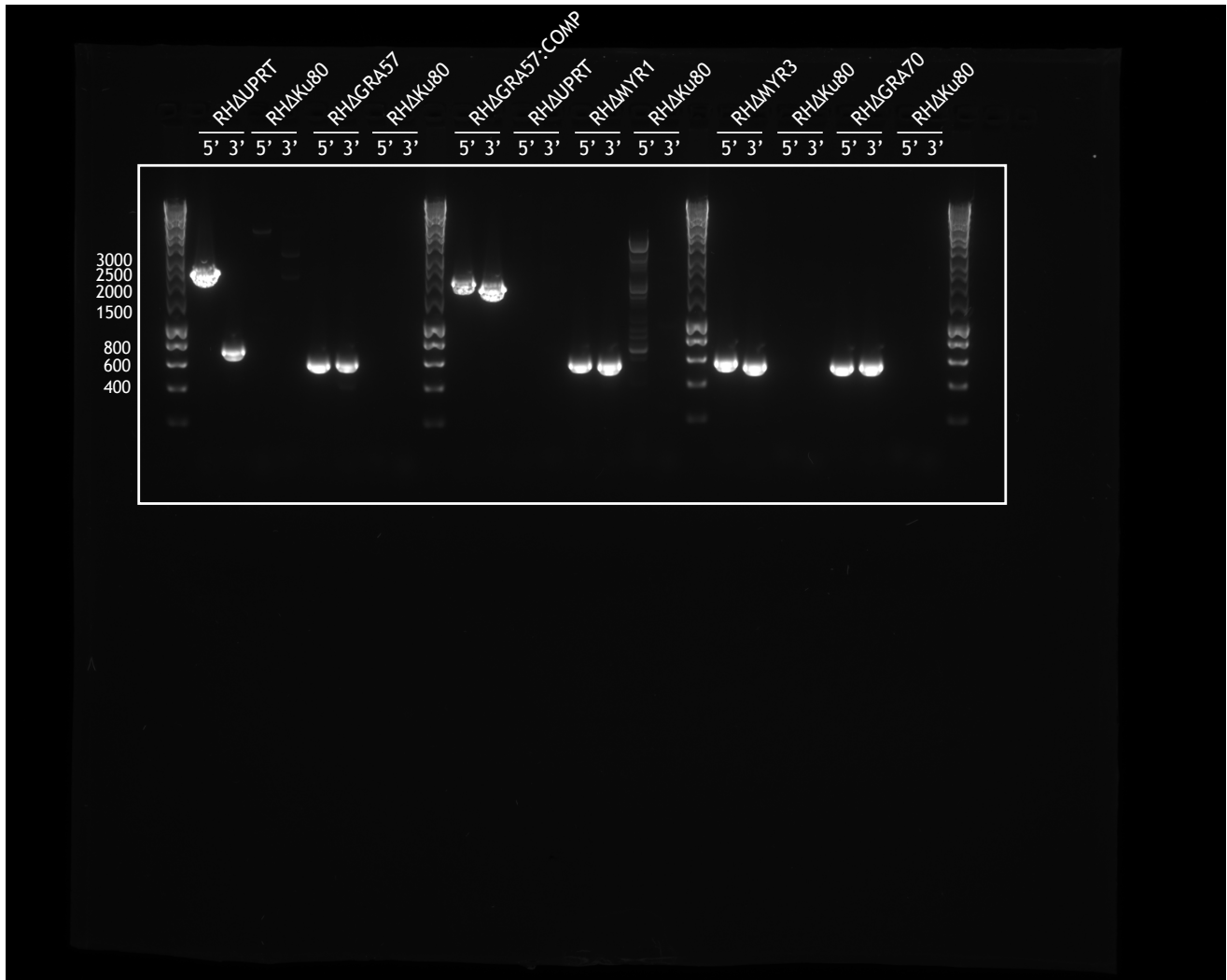


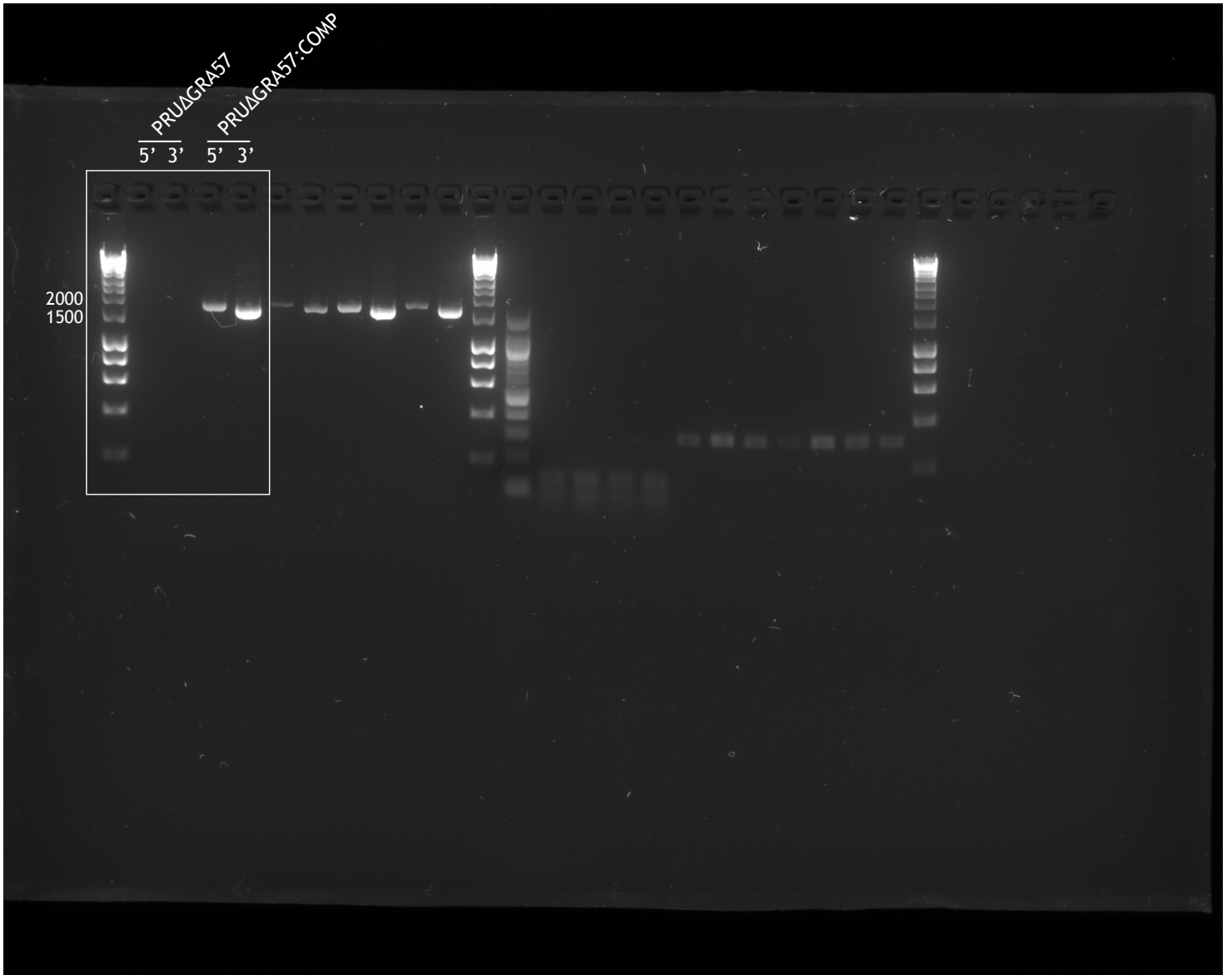
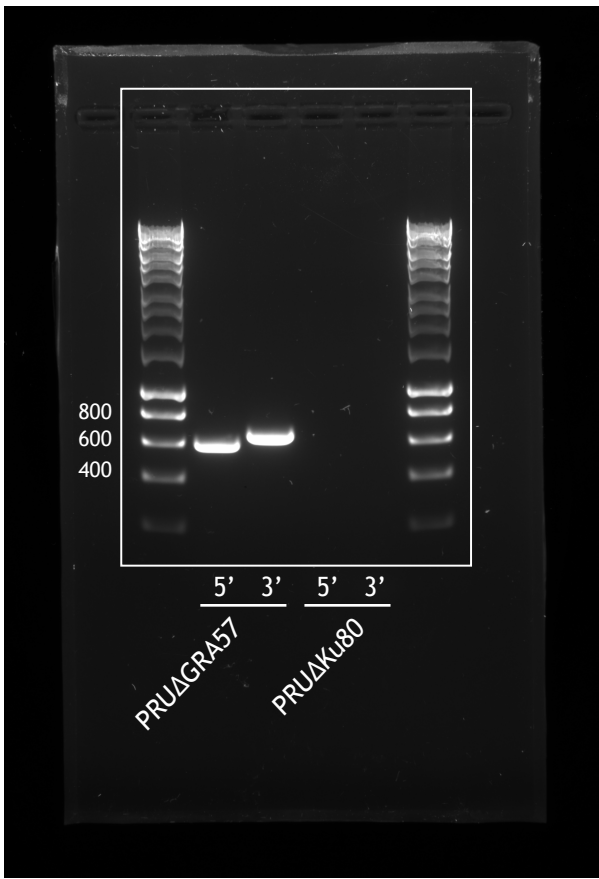
**I**



DNA gels used in Fig S1A.

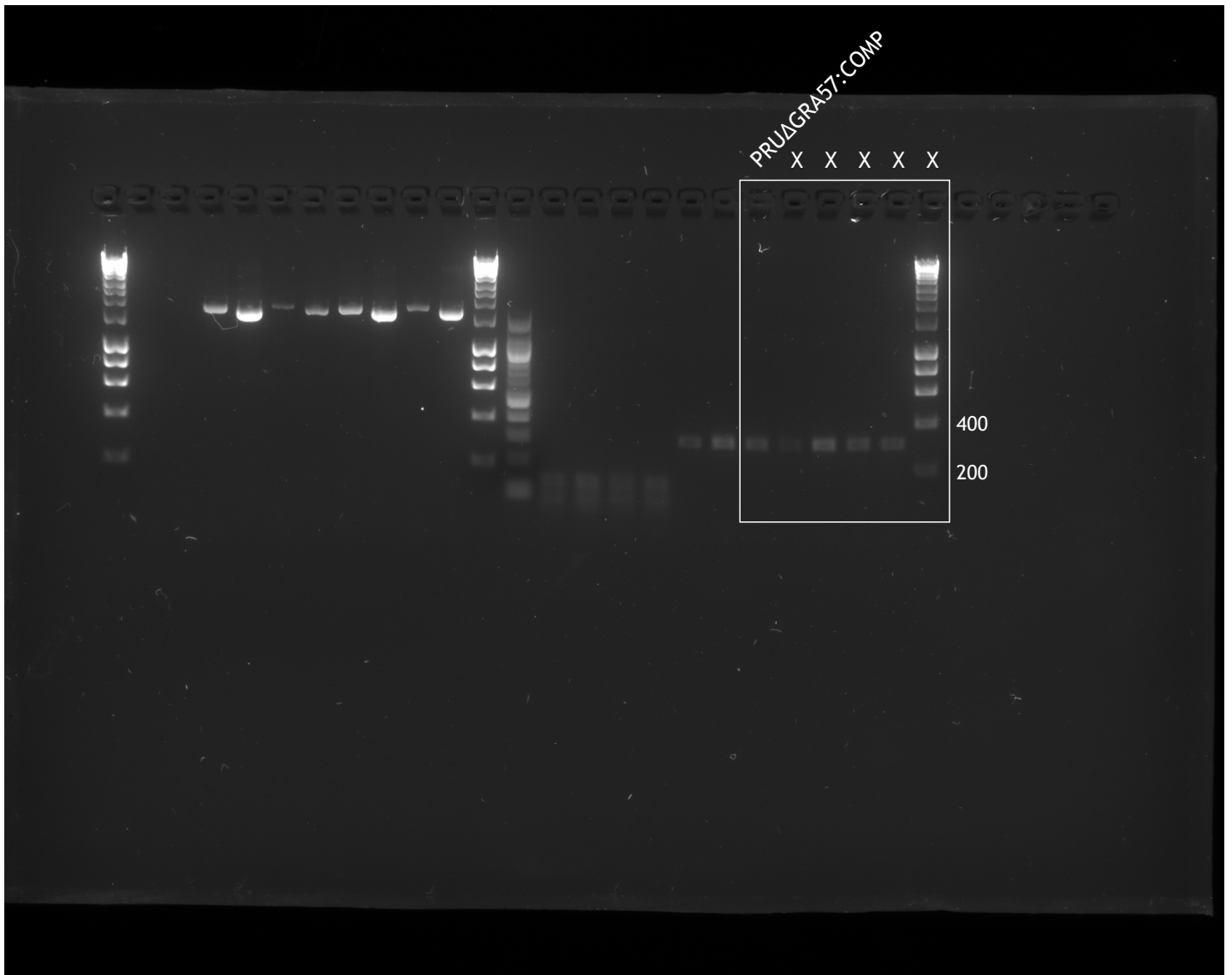
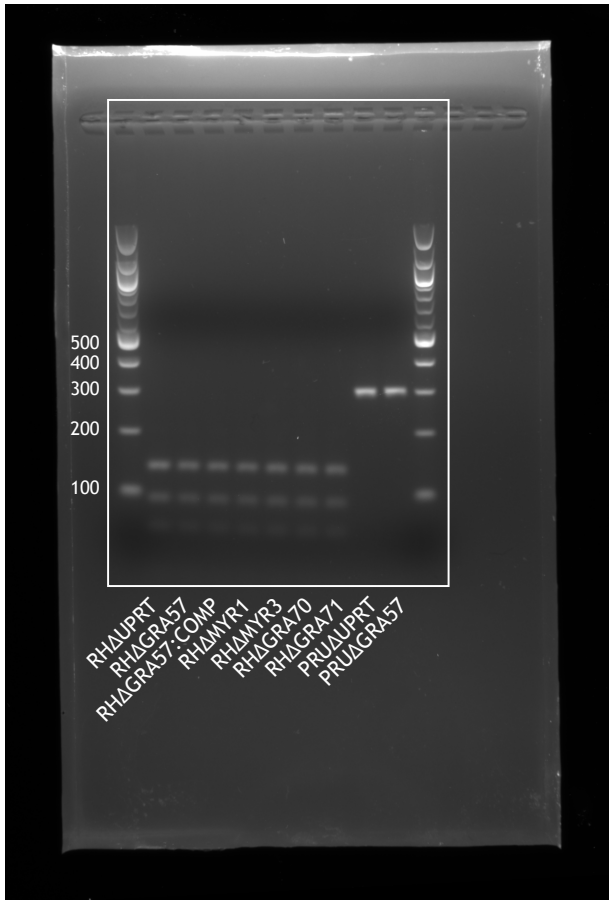
Box denotes regions used in figure, unboxed lanes are unrelated to this figure.





**DNA gels used in Fig S1B.**

Box denotes regions used in figure, unboxed lanes are unrelated to this figure. X indicates lanes unrelated to this report.



DNA gels used in Figure S2.

Box denotes regions used in figure, unboxed lanes are unrelated to this figure.

