

SUPPLEMENTAL MATERIAL

Table S1. Univariable and multivariable predictors of mid-term mortality

	Univariable				Multivariable (N=336)			
	HR	95%CI		P value	HR	95%CI		P value
Age	1.18	0.63	2.19	0.609	1.05	0.992	1.12	0.091
Female sex	1.33	0.6	3.0	0.485	1.05	0.38	2.92	0.928
Haemodialysis	3.28	0.97	11.07	0.056	0.382	0.009	15.703	0.612
baseline Creatinine	1.004	1.001	1.008	0.016	1.01	0.997	1.017	0.168
baseline Severe PVR	7.5	1.003	56.75	0.050	10.8	0.599	194.8	0.107
post TAVI CVA post	3.52	1.38	8.95	0.008	6.01	2.16	16.77	0.001
TAVI	1.48	0.97	2.24	0.069	1	0.46	2.17	0.996
AKI post TAVI	6.15	1.46	25.86	0.013	2.6	0.161	42	0.5
New renal replacement therapy	1.88	1.02	3.48	0.045	1.86	0.78	4.47	0.163

BE vs. SE

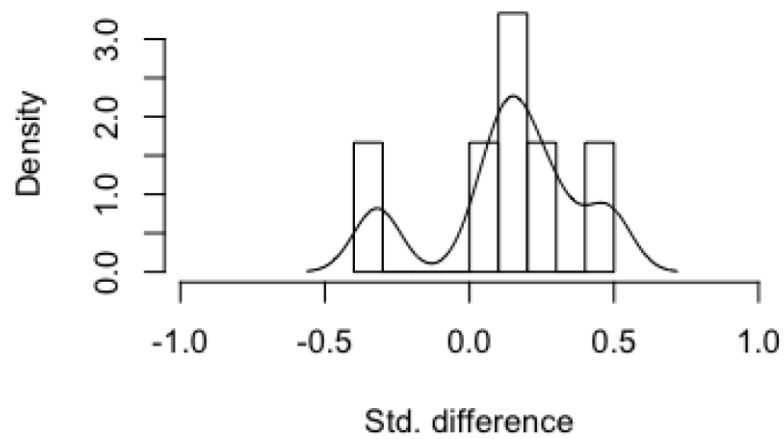
CI: confidence interval, PVR: paravalvular regurgitation, CVA: cerebrovascular accident, TAVI: transcatheter aortic valve implantation, AKI: acute kidney injury, BE: balloon expandable, SE: self-expanding

Figure S1. Relative multivariate imbalance



Figure S2. Standardized differences before and after matching

Standardized differences before matching



Standardized differences after matching

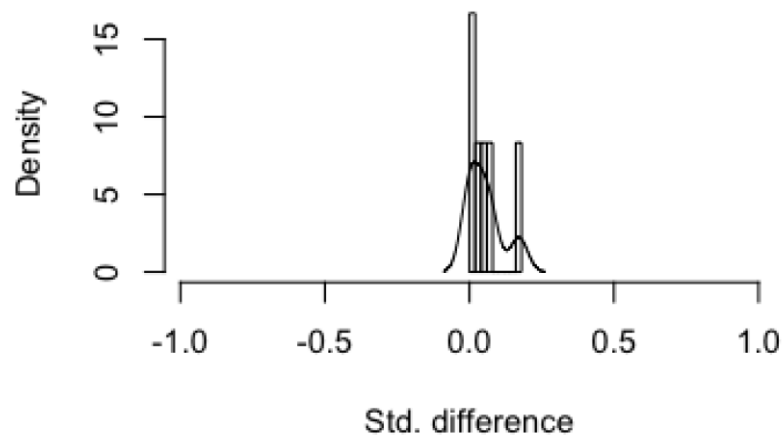
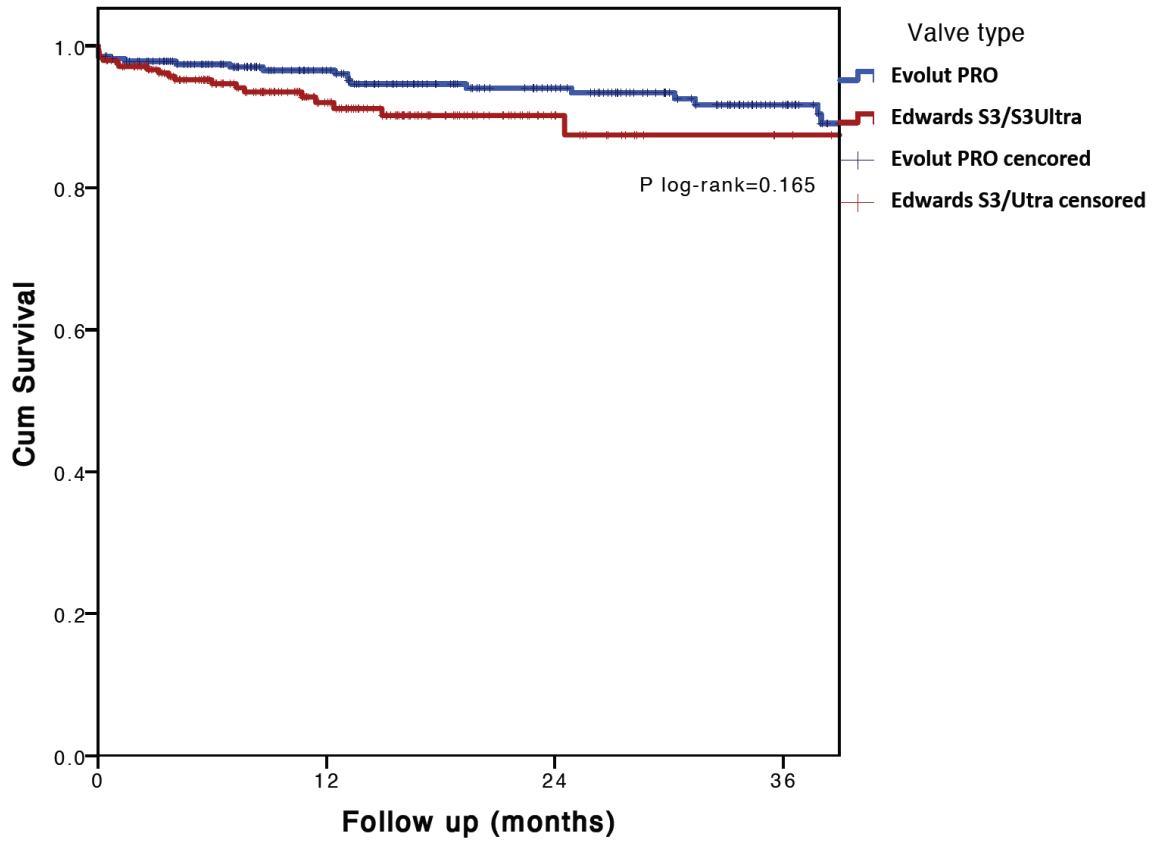


Figure S3. Mid-term survival in small transcatheter heart valve (THV) patients with transfemoral access.



Follow up (months)	0	12	24	36
Evolut PRO	273	203	146	80
Edwards S3/Ultra	244	114	35	16