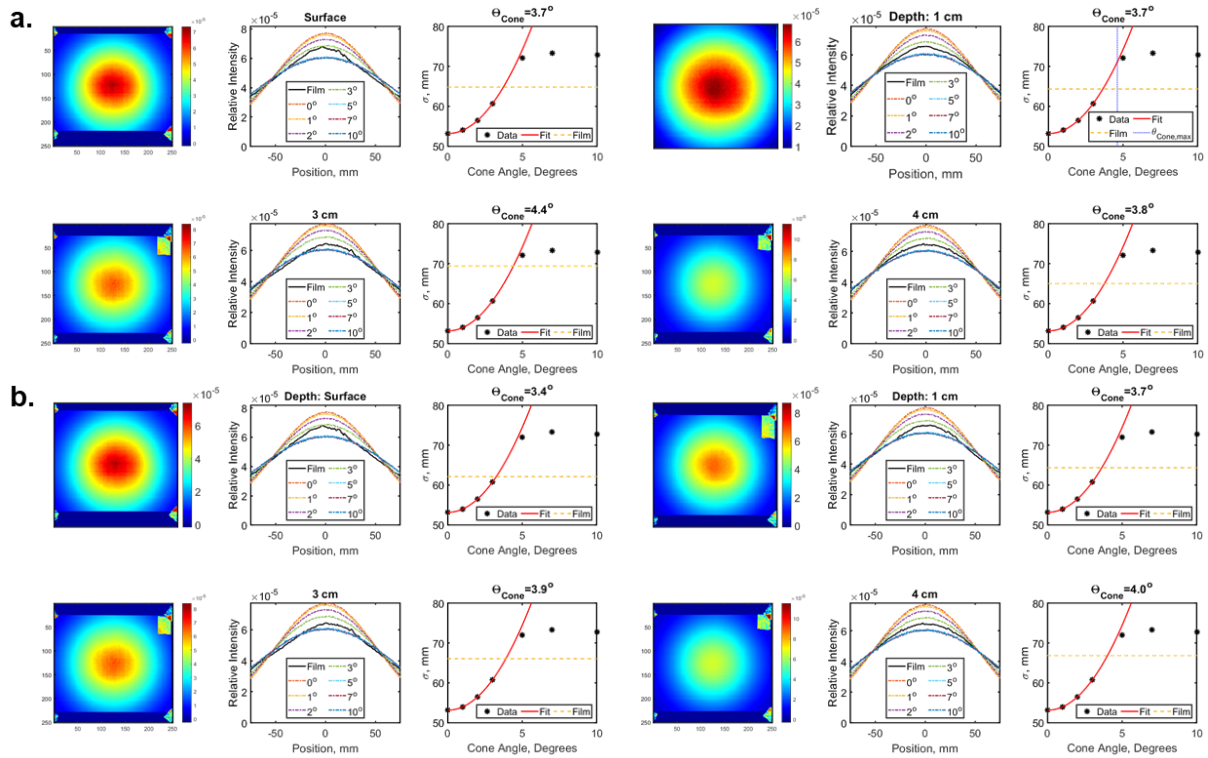


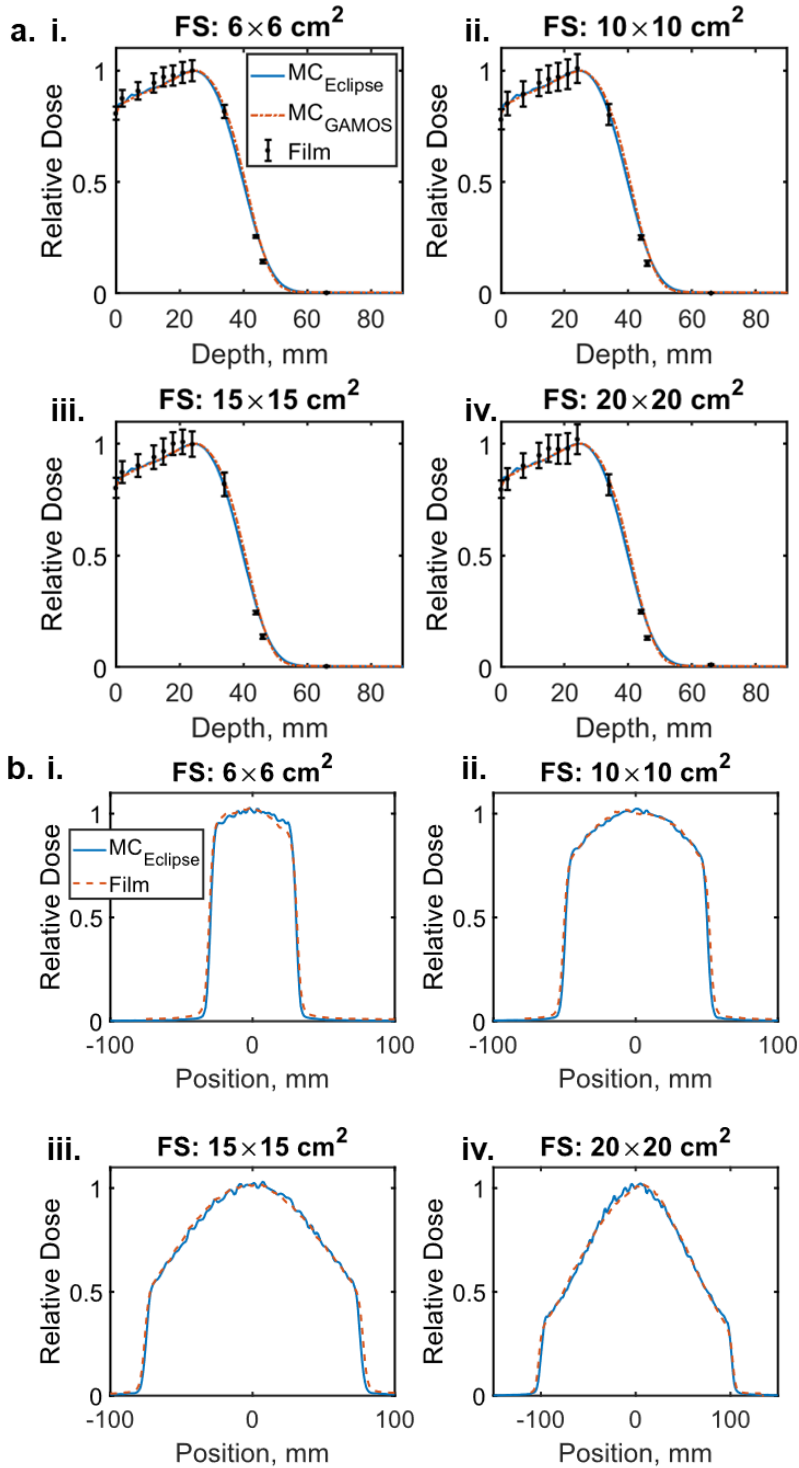
446 **Supplementary Material A**



447

448

449 **Supplementary Figures 1A.** Determining the fitted cone angle from all **a.** cross-plane and **b.** in-
 450 plane profiles at depths of surface, 1 cm, 3cm, and 4 cm.



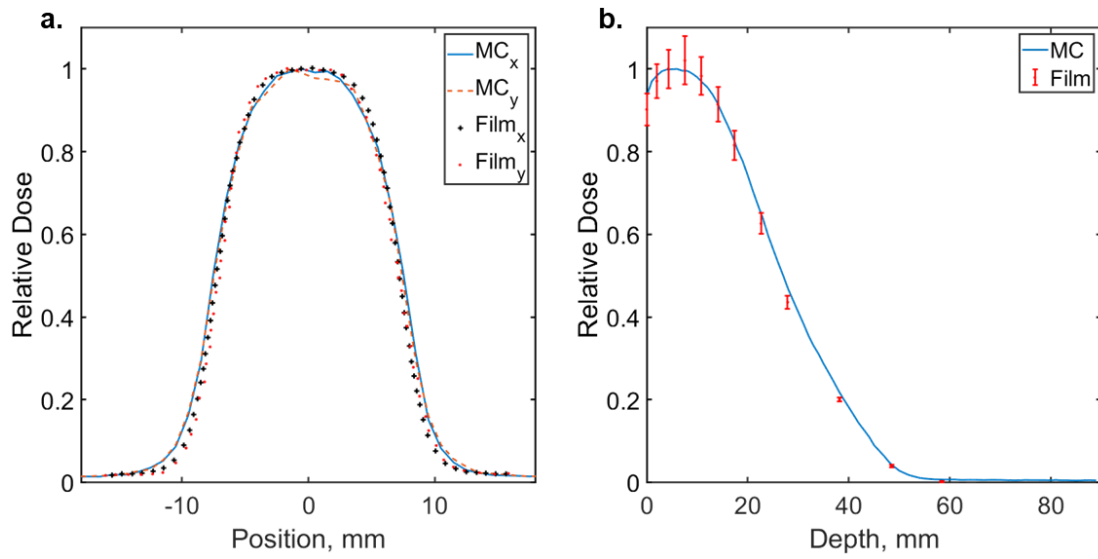
451

452

453 **Supplementary Figures 2A. a.** PDD's from the GAMOS beam model and used for
 454 configuration of the Eclipse TPS model which includes the electron applicators. **b.** Surface
 455 lateral profiles for each of the electron applicators from Eclipse TPS model in comparison to
 456 film.

457

458



459

460

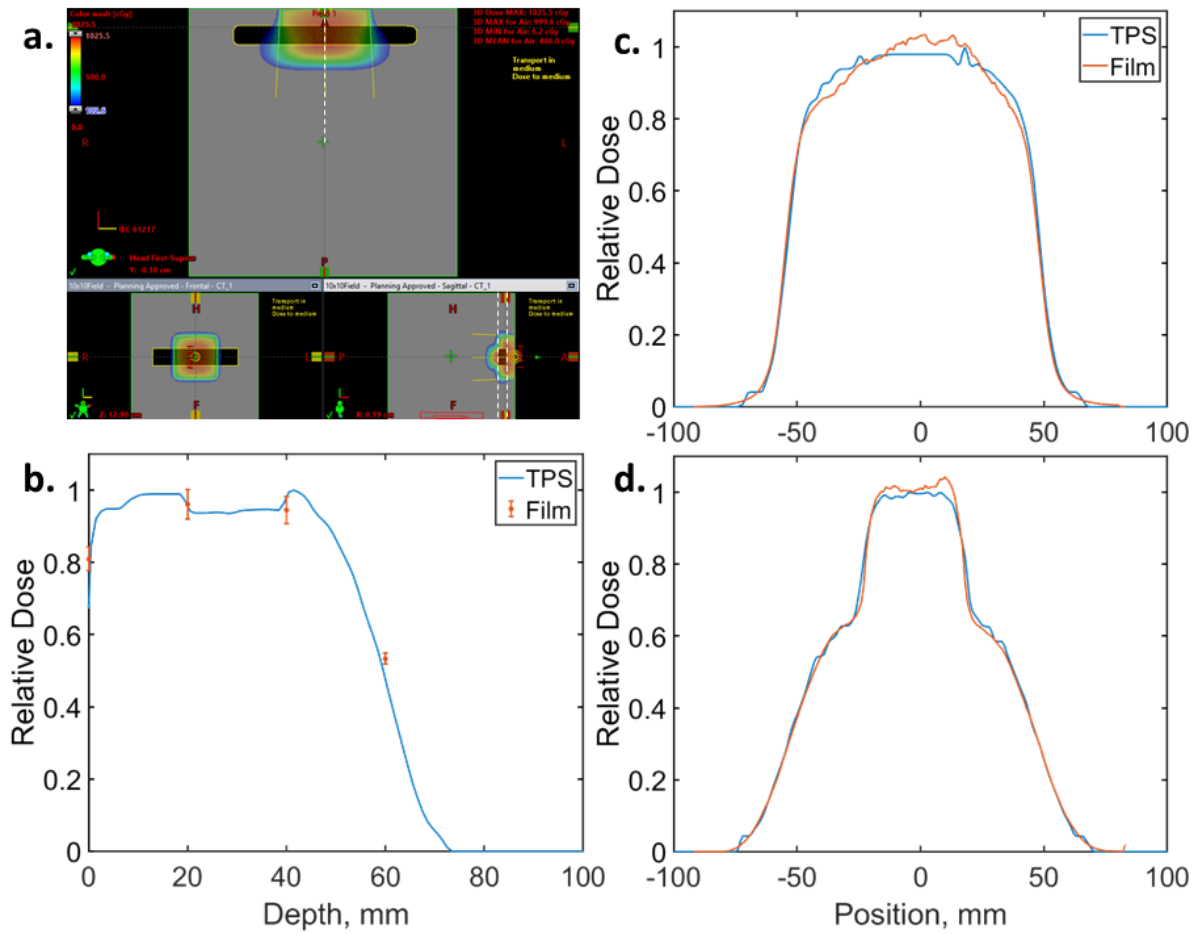
461

462

Supplementary Figures 3A. a. Lateral dose profile at the surface and **b.** percent depth dose curve in water phantom in comparison to film measurements (possible x-ray contamination for greater spread around penumbra and beyond).

463

464



465

466 **Supplementary Figures 4A. a.** Orthogonal views heterogeneous water phantom with a 20x4x2
 467 cm³ air volume 2 cm deep from the surface. The white dashed lines are included to show the film
 468 measured profiles which included **b.** PDD along the central axis **c.** Lateral profile at 2 cm depth
 469 and **d.** lateral profile at 4 cm depth.

470