

SUPPLEMENTARY MATERIALS

Statin use and mortality in rheumatoid arthritis: an incident user cohort study

Anindit Chhibber, MS; Savannah Hansen, PharmD; and Joseph Biskupiak, PhD, MBA

Supplementary Figure 1: Absolute Standardized Differences Before and After Yearly Propensity Score Matching

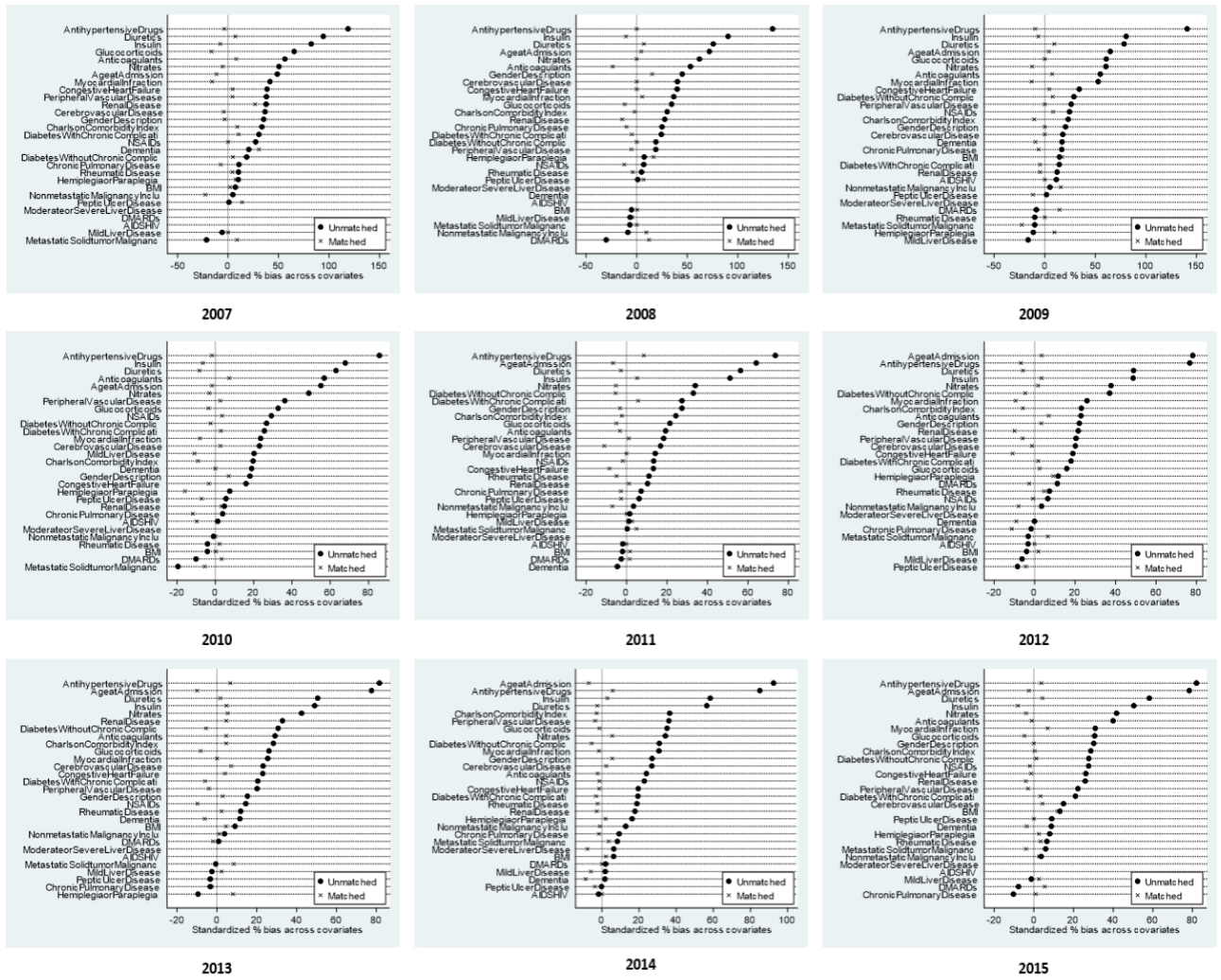
Supplementary Table 1: Baseline Characteristics of Participating RA Patients

Supplementary Table 2: Unadjusted and Adjusted Odds Ratios for Mortality Associated with Statin Use (Before Matching)

Supplementary Figure 2: Cumulative Hazard Estimates and Unadjusted Hazard Ratios for Mortality Associated with Statin Use (Before Matching)

Supplementary Table 3: Unadjusted and Adjusted Hazard Ratios for Mortality Associated with Statin Use in Unmatched Cohorts (Before Matching)

Supplementary Figure 1: Absolute Standardized Differences Before and After Yearly Propensity Score Matching



Supplementary Table 1: Baseline Characteristics of Participating RA Patients

Baseline Characteristics	Eligible Participants (N=19,614)
Age in Years (Mean ± SD)	51.51 ± 15.02
Gender (%)	
Female	75.08
Male	24.92
BMI (Mean ± SD)	25.55 ± 3.5
Comorbidities (%)	
AIDSHIV	0.33
Nonmetastatic Malignancy	8.57
Cerebrovascular Disease	6.29
Chronic Pulmonary Disease	17.91
Congestive Heart Failure	4.30
Dementia	0.62
Diabetes without Complications	6.71
Diabetes with Complications	3.68
Hemiplegia or Paraplegia	1.99
Metastatic Solid Tumor Malignancy	3.07
Liver Disease	9.63
Myocardial Infarction	2.17
Peptic Ulcer Disease	3.55
Peripheral vascular Disease	4.82
Renal Disease	5.05
Rheumatic Disease	17.64
Medication Use (%)	
Antihypertensive Drugs	17.90
Diuretics	11.69
Glucocorticoids	28.33
Anticoagulants	5.99
Insulin	7.34
Nitrates	2.61
DMARDs	4.66
NSAIDs	28.41

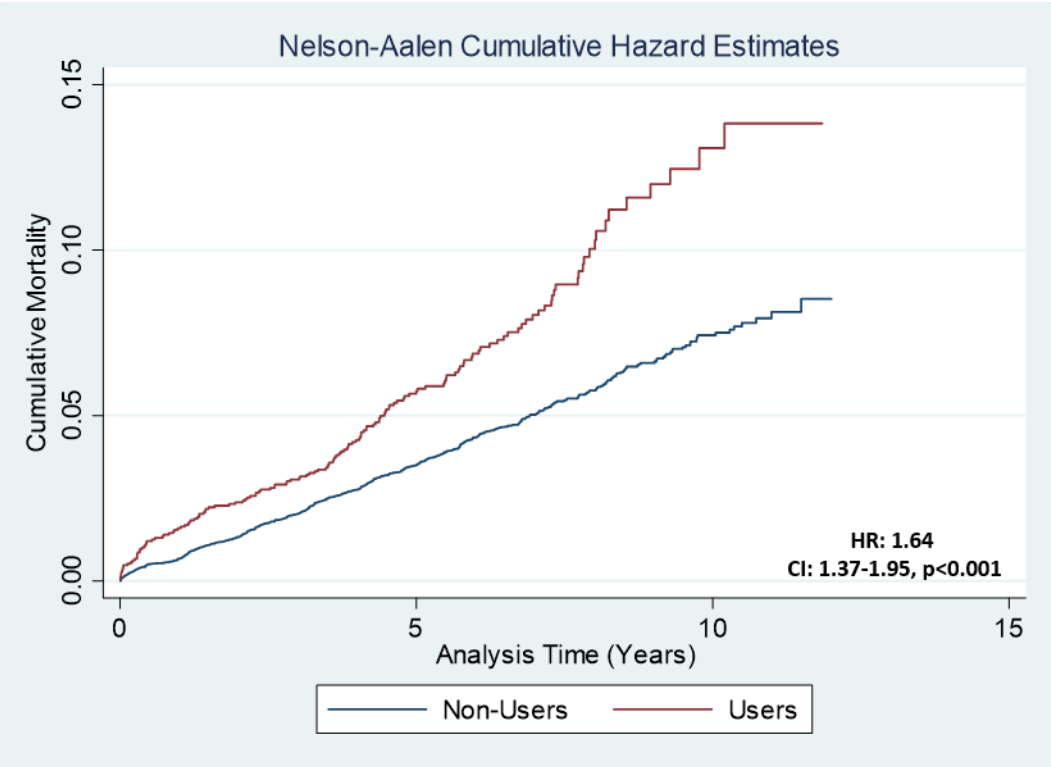
AIDS: acquired immunodeficiency syndrome; HIV: human immunodeficiency virus; DMARDs: disease-modifying antirheumatic drugs; NSAIDs: nonsteroidal anti-inflammatory drug

Supplementary Table 2: Unadjusted and Adjusted Odds Ratios for Mortality Associated with Statin Use (Before Matching)

Variables	Unadjusted Regression			Adjusted Regression		
	Odds Ratio	95% CI	p Value	Odds Ratio	95% CI	p Value
Age	1.04	(1.03 – 1.04)	<0.001	1.03	(1.02 – 1.03)	<0.011
Gender	1.77	(1.44 – 2.19)	<0.001	1.45	(1.16 – 1.81)	0.001
BMI	0.99	(0.98 – 1.00)	0.33	0.98	(0.97 – 1.00)	0.091
AIDSHIV	6.15	(2.79 – 13.57)	<0.001	3.70	(1.55 – 8.83)	0.003
Nonmetastatic Malignancy	1.65	(1.23 – 2.23)	0.001	1.16	(0.84 – 1.59)	0.361
Cerebrovascular Disease	1.61	(1.14 – 2.27)	0.007	0.79	(0.53 – 1.17)	0.246
Chronic Pulmonary Disease	1.75	(1.39 – 2.20)	<0.001	1.05	(0.81 – 1.36)	0.704
Congestive Heart Failure	2.99	(2.16 – 4.13)	<0.001	1.24	(0.84 – 1.83)	0.261
Dementia	2.16	(0.87 – 5.31)	0.094	0.84	(0.33 – 2.14)	0.717
Diabetes without Complications	1.88	(1.37 – 2.58)	<0.001	0.89	(0.62 – 1.27)	0.539
Diabetes with Complications	2.36	(1.62 – 3.43)	<0.001	1.04	(0.67 – 1.61)	0.853
Hemiplegia or Paraplegia	1.61	(0.89 – 2.89)	0.108	0.86	(0.45 – 1.62)	0.648
Metastatic Solid Tumor Malignancy	5.07	(3.72 – 6.90)	<0.001	3.15	(2.25 – 4.43)	<0.001
Liver Disease	3.20	(2.52 – 4.06)	<0.001	2.42	(1.85 – 3.18)	<0.001
Myocardial Infarction	2.69	(1.71 – 4.23)	<0.001	0.94	(0.56 – 1.57)	0.822
Peptic Ulcer Disease	1.67	(1.08 – 2.59)	0.020	0.88	(0.55 – 1.40)	0.593
Peripheral vascular Disease	2.36	(1.69 – 3.29)	<0.001	0.79	(0.53 – 1.16)	0.242
Renal Disease	2.24	(1.60 – 3.13)	<0.001	0.89	(0.60 – 1.33)	0.599
Rheumatic Disease	2.09	(1.67 – 2.60)	<0.001	1.40	(1.11 – 1.78)	0.005
Antihypertensive Drugs	2.58	(2.09 – 3.19)	<0.001	1.21	(0.93 – 1.59)	0.144
Diuretics	3.44	(2.76 – 4.30)	<0.001	1.73	(1.31 – 2.27)	<0.001
Glucocorticoids	1.62	(1.32 – 2.00)	<0.001	1.15	(0.92 – 1.45)	0.207
Anticoagulants	2.41	(1.78 – 3.27)	<0.001	1.26	(0.90 – 1.76)	0.171
Insulin	4.78	(3.79 – 6.05)	<0.001	2.76	(2.05 – 3.71)	<0.001
Nitrates	3.83	(2.66 – 5.51)	<0.001	1.72	(1.14 – 2.60)	0.010
DMARDs	0.60	(0.32 – 1.09)	0.097	0.94	(0.51 – 1.74)	0.858
NSAIDs	0.88	(0.70 – 1.11)	0.314	0.78	(0.61 – 1.00)	0.051
Statins	1.70	(1.29 – 2.23)	<0.001	0.71	(0.52 – 0.98)	0.038

Note: Adjusted for age, gender, BMI, comorbidities and medication use

Supplementary Figure 2: Cumulative Hazard Estimates and Unadjusted Hazard Ratios for Mortality Associated with Statin Use (Before Matching)



Supplementary Table 3: Unadjusted and Adjusted Hazard Ratios for Mortality Associated with Statin Use in Unmatched Cohorts (Before Matching)

Follow-up Time	Hazards Ratio	(95% CI)	p value
Unadjusted			
1 Year Follow-up	2.40	(1.63 – 3.53)	<0.001
2 Year Follow-up	1.92	(1.41 – 2.62)	<0.001
3 Year Follow-up	1.68	(1.28 – 2.20)	<0.001
Total Follow-up	1.64	(1.37 – 1.95)	<0.001
Adjusted			
1 Year Follow-up	0.69	(0.44 – 1.07)	0.104
2 Year Follow-up	0.69	(0.48 – 0.99)	0.044
3 Year Follow-up	0.70	(0.51 – 0.95)	0.023
Total Follow-up	0.83	(0.68 – 1.01)	0.069

Note: Adjusted for age, gender, BMI, comorbidities and medication use