

Abarinov Supplemental Figure S1.

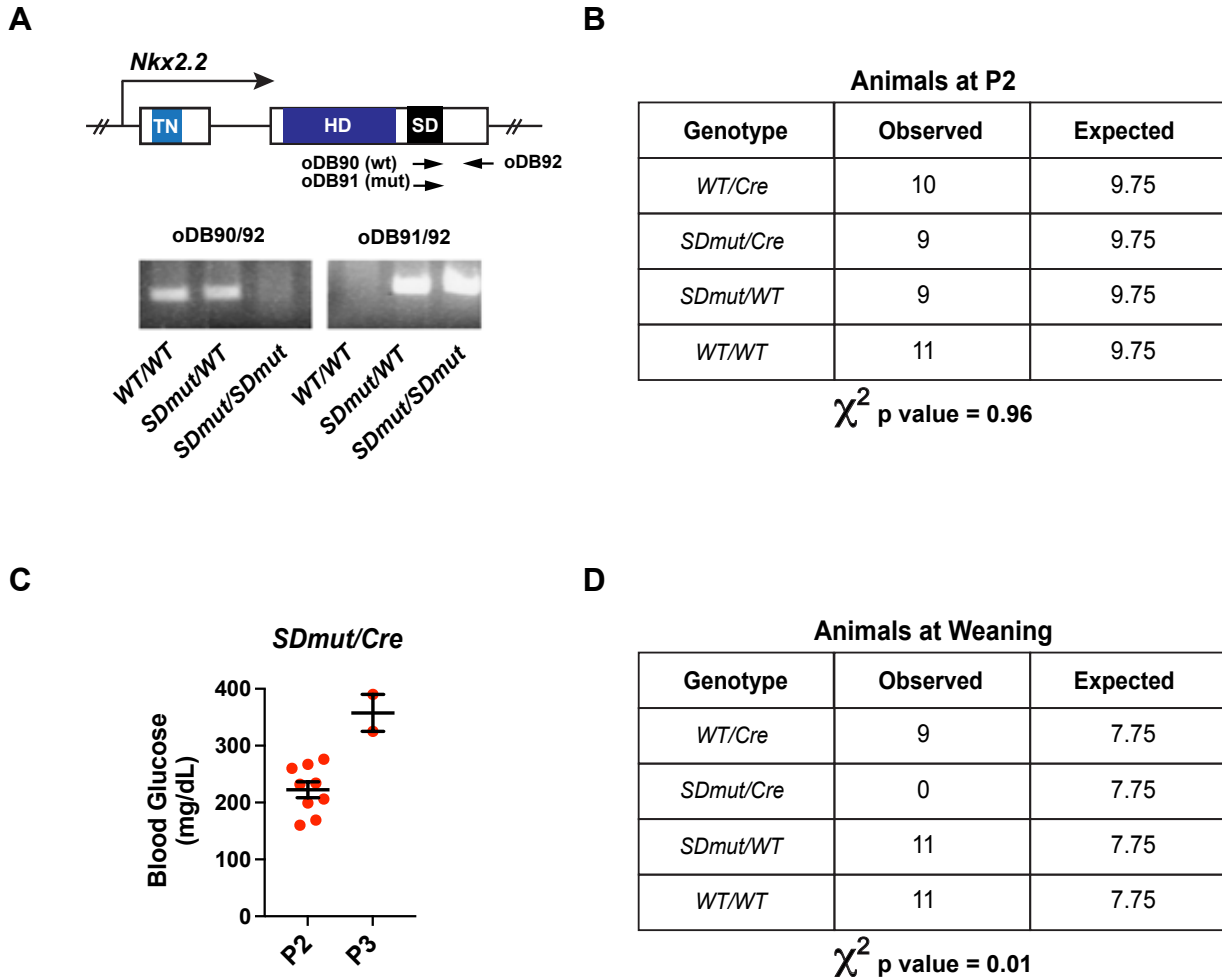


Figure S1. Additional characterization of $Nkx2.2^{SDmut/Cre}$ mice. (A) Genotyping scheme for the $Nkx2.2^{SDmut}$ allele. Gel shows the PCR products pertaining to $Nkx2.2^{+/+}$ (WT/WT), $Nkx2.2^{SDmut/+}$ (SDmut/WT), and $Nkx2.2^{SDmut/SDmut}$ (SDmut/SDmut) animals. (B) Chi Square analysis at P2 demonstrates that $Nkx2.2^{SDmut/Cre}$ mice are born at normal Mendelian ratios. (C) $Nkx2.2^{SDmut/Cre}$ neonates experience worsening blood glucose levels at P3 compared to P2. Data are presented as mean \pm SEM. (D) Chi Square analysis of genotypes obtained at weaning. No $Nkx2.2^{SDmut/Cre}$ animals survived to this point of development. n's are indicated in tables and by data points on graph.