

Abarinov Figure S5.

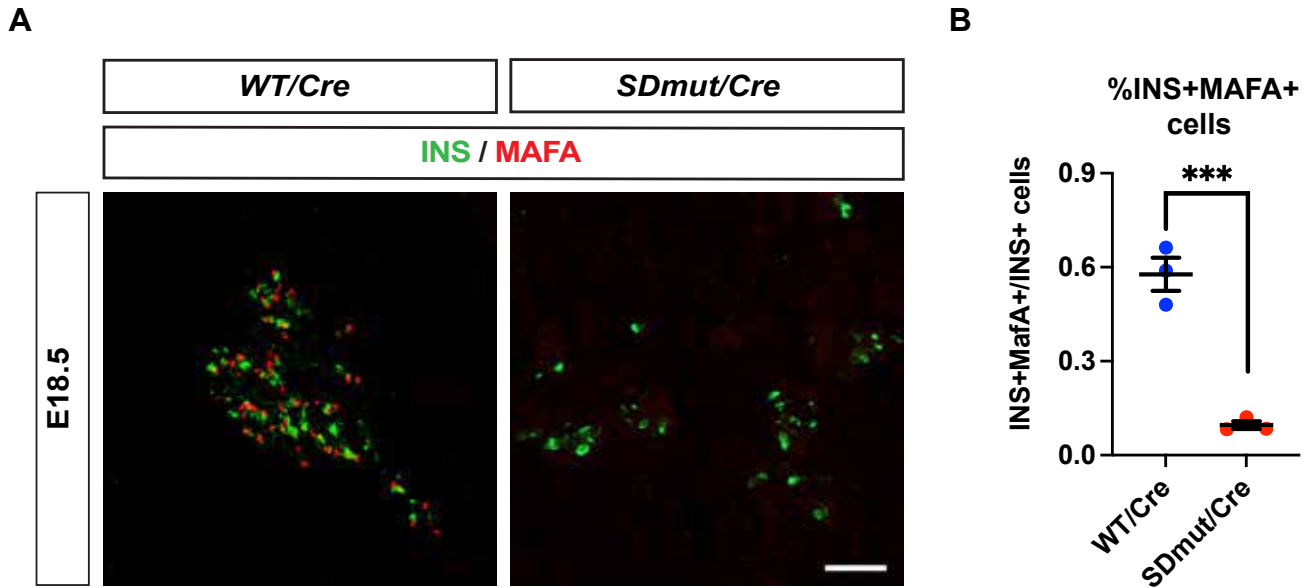


Figure S5. MAFA-expressing cells are significantly reduced in *Nkx2.2^{SDmut/Cre}* embryos at E18.5. (A) INS and MAFA co-expression is rarely seen in *Nkx2.2^{SDmut/Cre}* embryos. (B) Quantification confirms that the percentage of INS+ cells expressing MAFA is significantly reduced in *Nkx2.2^{SDmut/Cre}* mice. Data are presented as mean \pm SEM. *** $p < 0.001$. n's are indicated by data points. Scale bar represents 50 μ m.