

# Abarinov Figure S9.

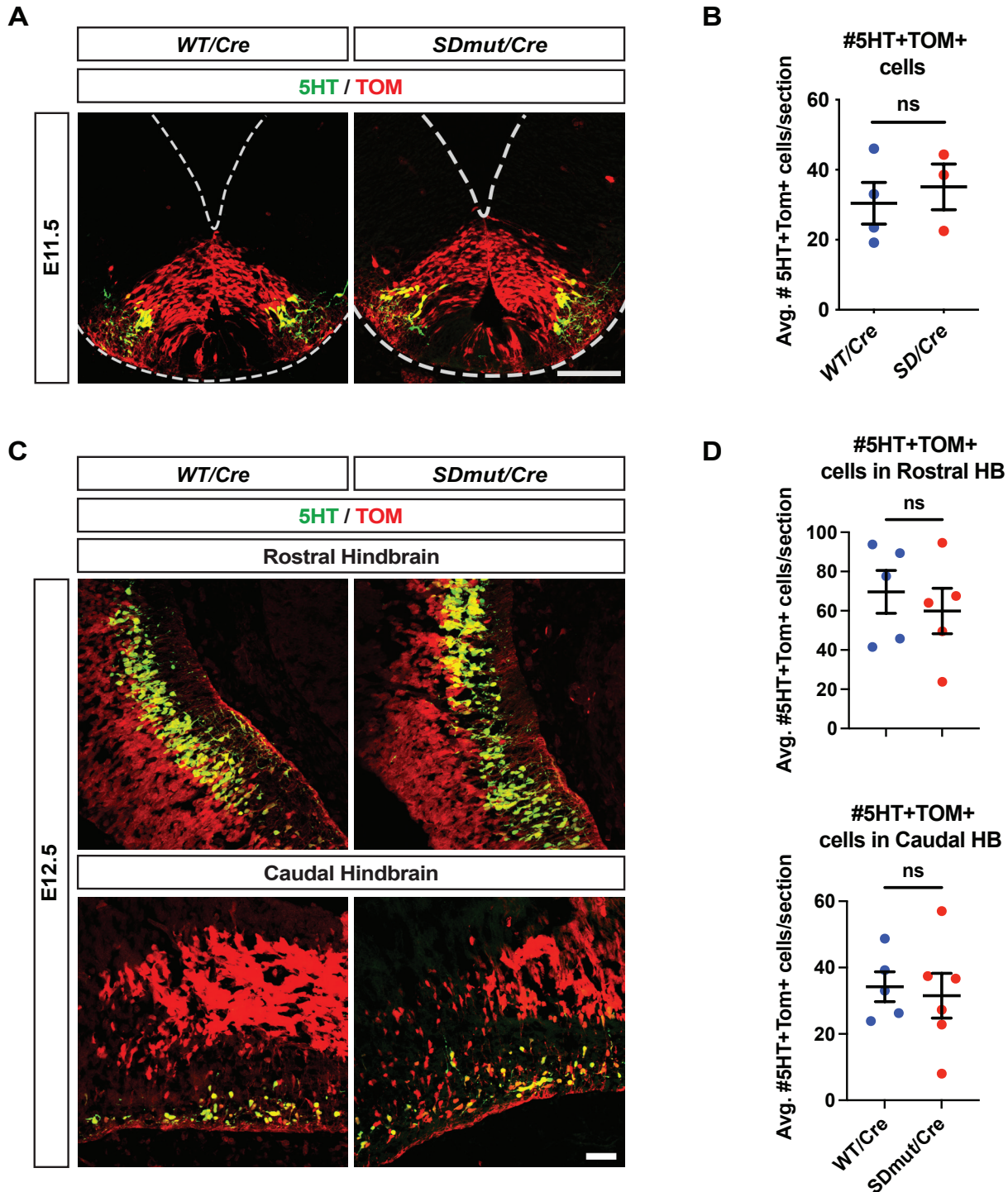


Figure S9. Serotonergic (5HT) neurons are generated normally in  $Nkx2.2^{SDmut/Cre}$  embryos. (A-B) Immunostaining (A) and quantification (B) of 5HT+TOM+ cells in E11.5 hindbrains (HBs) of  $Nkx2.2^{Cre/+}$  (WT/Cre) and  $Nkx2.2^{SDmut/Cre}$  (SDmut/Cre) embryos. (C-D) Expression (C) and quantification (D) of 5HT+TOM+ cells in the rostral (top) and caudal (bottom) hindbrains of E12.5  $Nkx2.2^{Cre/+}$  and  $Nkx2.2^{SDmut/Cre}$  animals. No significant differences in 5HT+TOM+ cell numbers were detected. Data are presented as mean  $\pm$  SEM. ns, not significant. n's are indicated by data points. Scale bars represent 50 $\mu$ m.