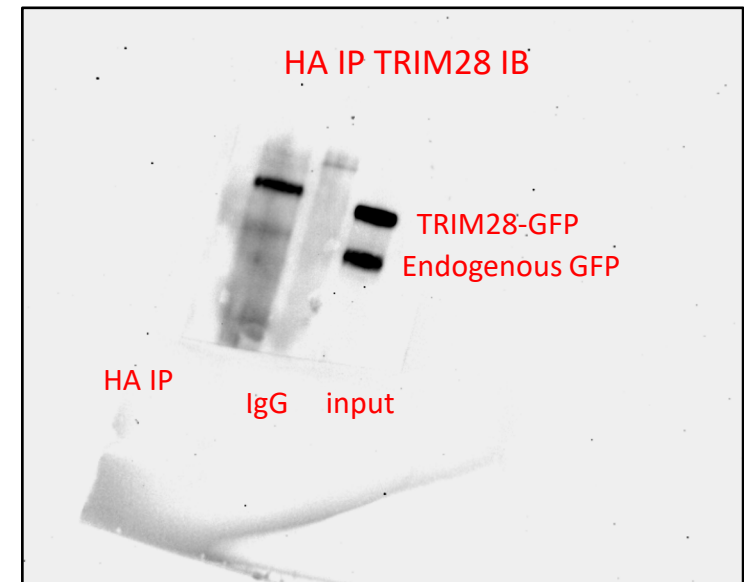
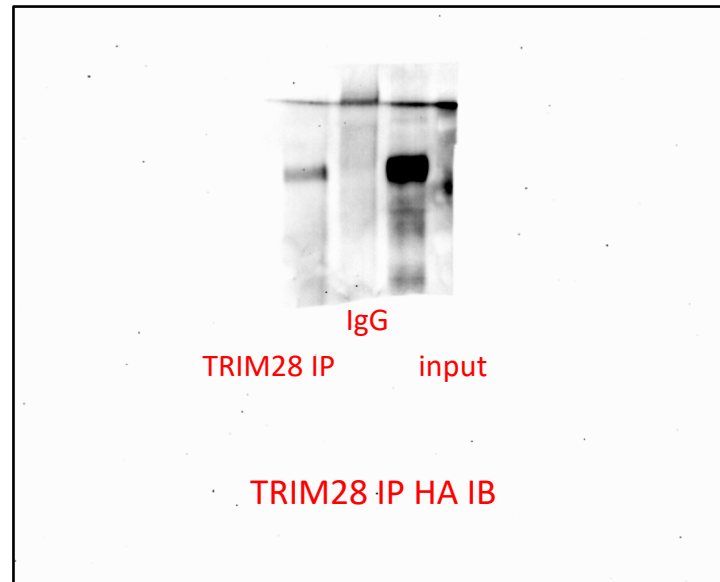
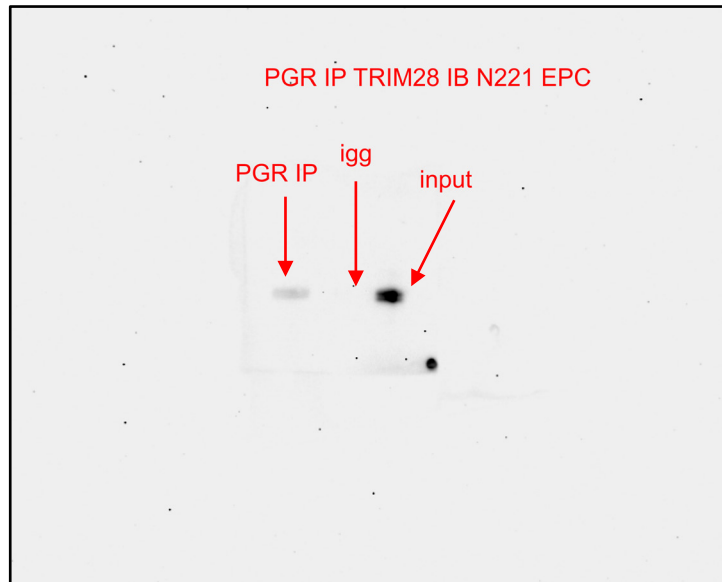


# Gel Images for Figure 1

TRIM28 antibody: ab22553 abcam

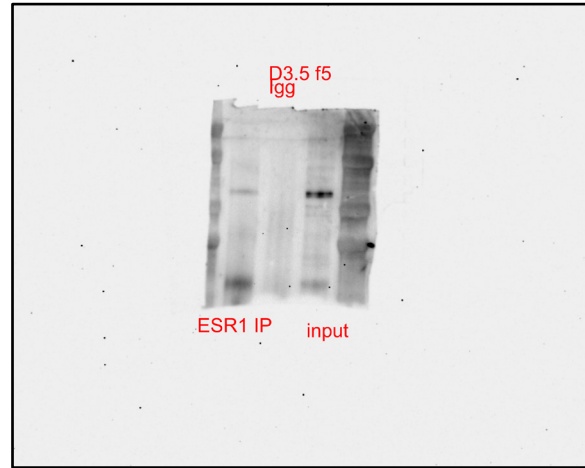
HA antibody: 3724, Cell signaling

TRIM28 antibody: ab109545 Abcam

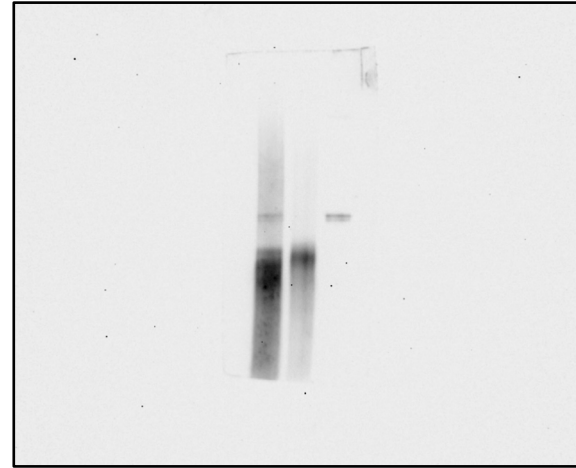


# Gel Images for Figure 6

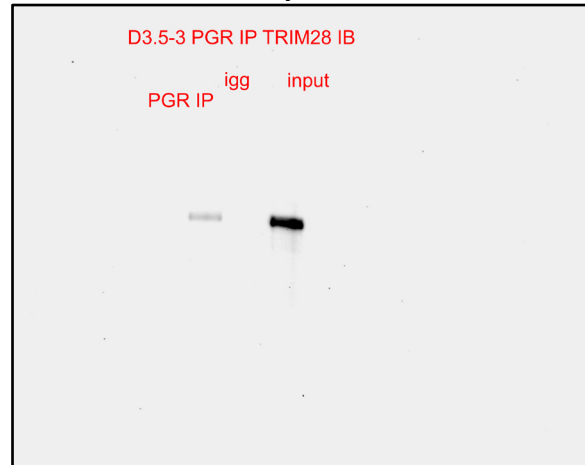
TRIM28 antibody: ab22553 abcam



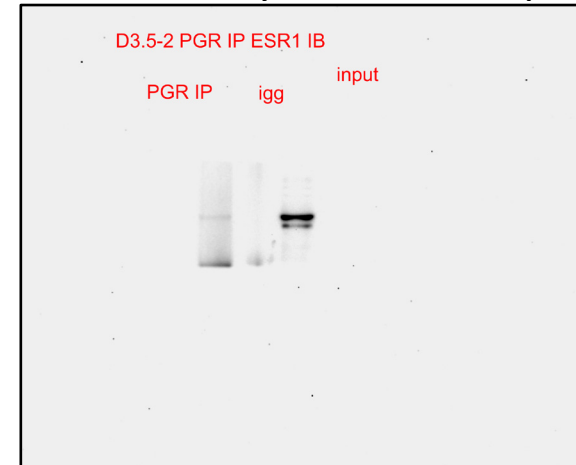
ESR1 antibody: 06-936 Milipore



TRIM28 antibody: ab22553 abcam

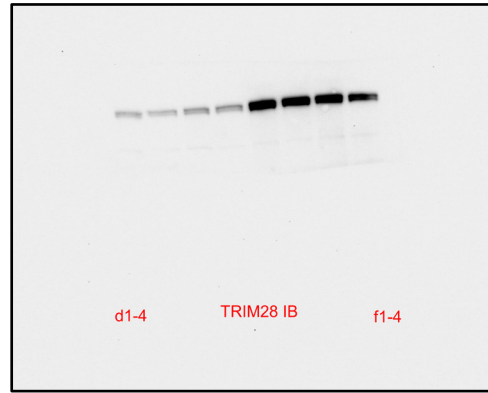


ESR1 antibody: 06-936 Milipore

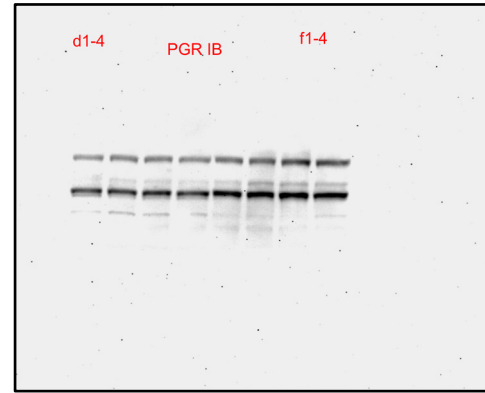


# Gel Images for Supplementary Figure 4

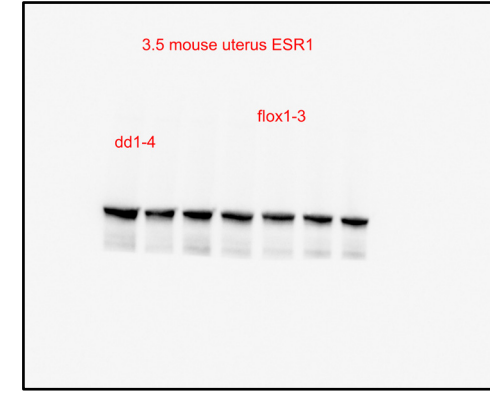
TRIM28 antibody: ab109545 Abcam



PGR antibody: 1294 Agilent



ER $\alpha$  antibody: 06-935 Millipore



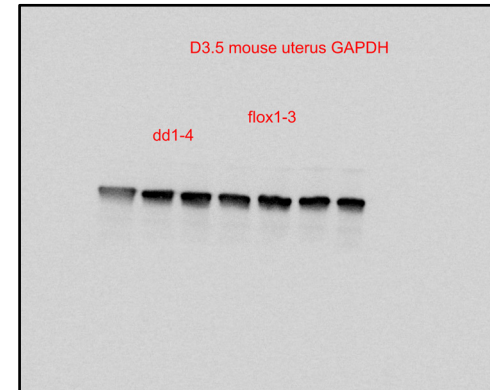
$\beta$ -actin antibody: A5316 Sigma



$\beta$ -actin antibody: A5316 Sigma



GAPDH antibody: 5174 Cell signaling



Only one one loading control gel image, GAPDH was shown in the Supplementary figure 4.