

## Supplementary information

*Article title:* Effects of dexmedetomidine on human non-small cell lung cancer growth  
in a clinically relevant surgical xenograft model

*Journal name:* Scientific Reports

*Author names:* Ji Hae Jun, Jae-Kwang Shim, Ju Eun Oh, Kwang-Sub Kim, Young-Lan Kwak,  
and Sarah Soh

*Correspondence:* Sarah Soh, MD, Ph.D.

E-mail: yeonchoo@yuhs.ac

Department of Anaesthesiology and Pain Medicine, Yonsei University College of Medicine, 50  
Yonsei-ro, Seodaemun-gu, Seoul 03722, Republic of Korea

Telephone: 82-2-2228-8500

Fax: 82-2-364-2951

ORCID ID: 0000-0001-5022-4617

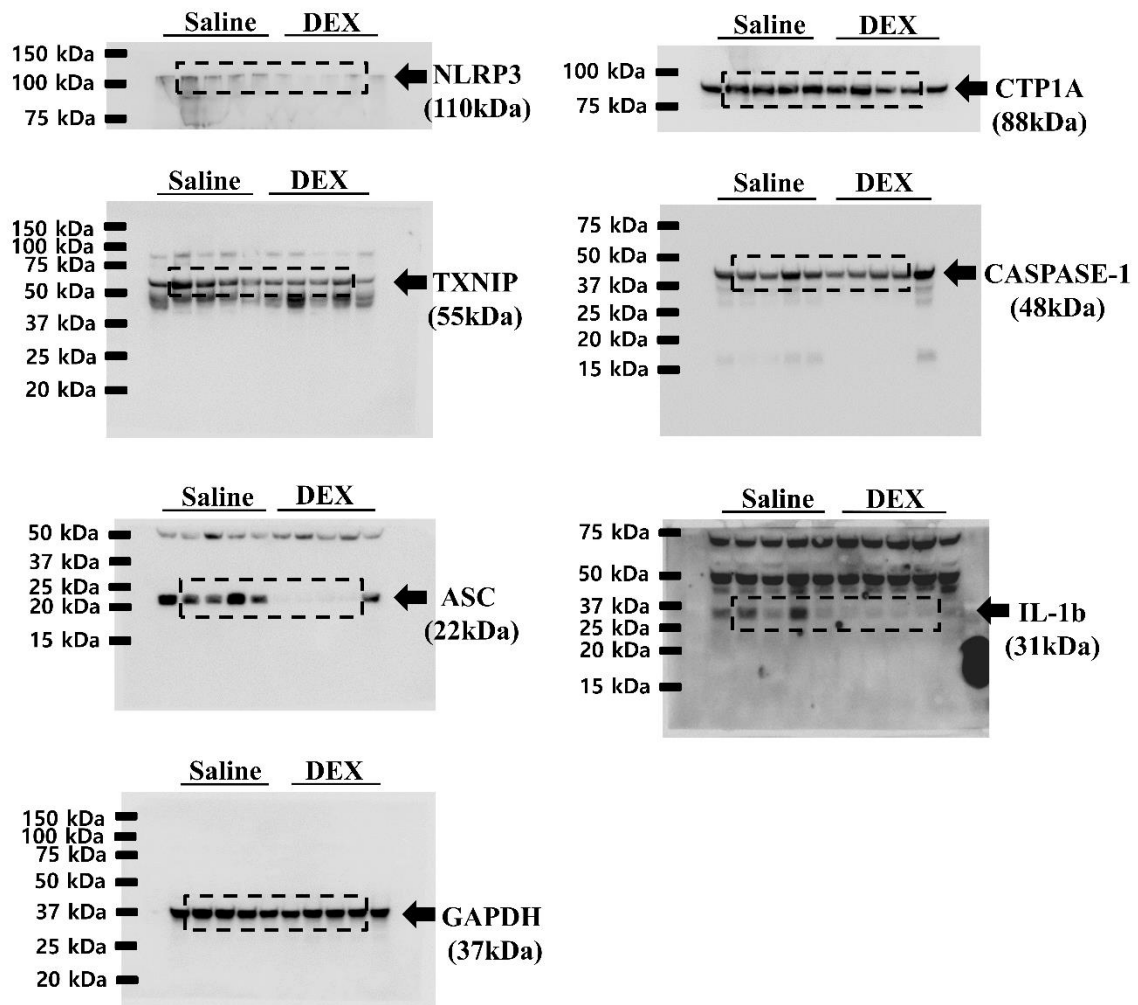
### SUPPLEMENTARY TABLES

Supplementary Table S1 .....	2
Supplementary Figure S1.....	3

**Supplementary Table S1.** The primers for quantitative polymerase chain reaction (qPCR) assay

Gene	Primer names	Primer sequence (5' to 3')
IL-10	Forward	GGTGAGAAGCTGAAGACCCT
IL-10	Reverse	ACACCTTGGTCTTGGAGCTT
IL-18	Forward	GGACACTTTCTTGCTTGCCA
IL-18	Reverse	ACCCTCCCCACCTAACTTTG
GAPDH	Forward	CTGGAGAAACCTGCCAAGTA
GAPDH	Reverse	AGACAACCTGGTCCTCAGTG

**Supplementary Figure S1.** Original images of Western blot (Fig 5)



Lanes 1 to 5 correspond to samples from the A549-luc-saline group, and lanes 6 to 10 correspond to samples from the A549-luc-DEX group. Some membranes were cut prior to hybridization with antibodies. Lanes 2 to 9 (the dotted squares) are shown in the manuscript for publication.