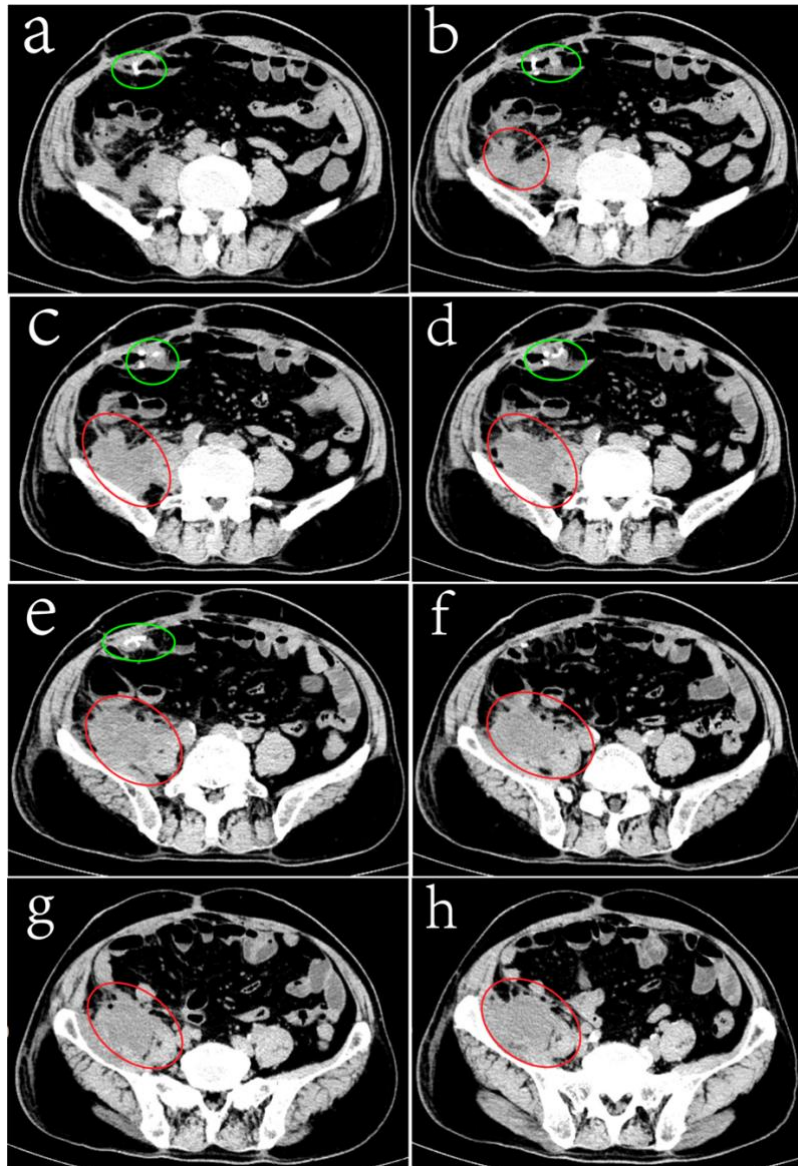


Supplementary Figure S2A Red circles represent the encapsulated iliac fossa abscess around the ASL in alphabetical order. Green circles show the titanium staples on the ileal anastomosis.



Supplementary Figure S2B Blue circles show the titanium clips on the appendiceal orifice. Green circles show the ileal anastomosis. The red arrows show the path of the J catheter alphabetically.

