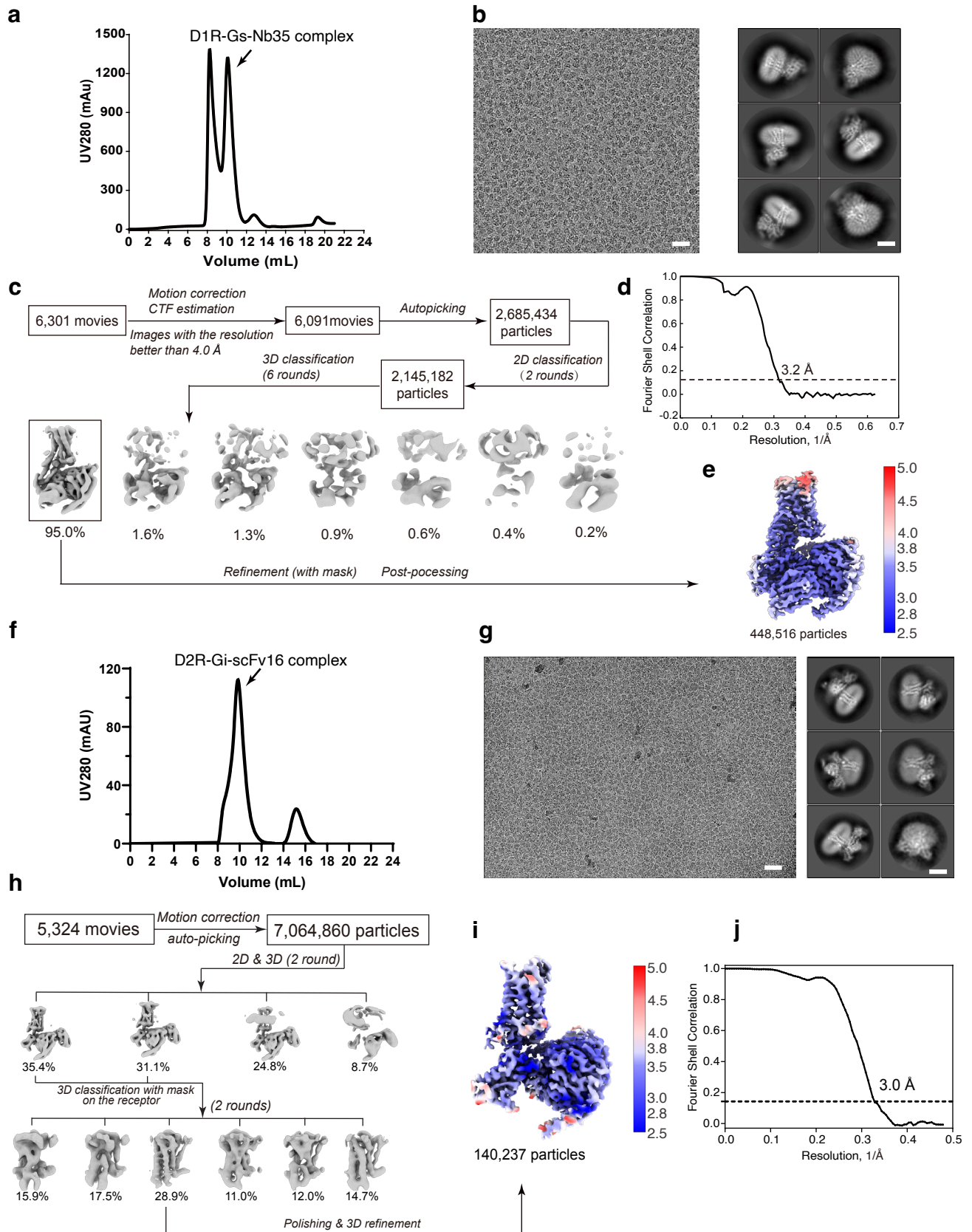


Supplementary information, Fig. S1



**Fig. S1. D1R-G<sub>s</sub> and D2R-G<sub>i</sub> complexes preparation and cryo-EM data processing.** **a-e** D1R-G<sub>s</sub> complexes preparation and cryo-EM data processing. a, Profiles of size-exclusion chromatography elution of the D1R-G<sub>s</sub> complex. b, Representative cryo-EM images (scale bar, 50 nm) and 2D classification (scale bar, 5 nm) of the D1R-G<sub>s</sub> complex. c, Workflow of cryo-EM single-particle analysis of the D1R-G<sub>s</sub> complex. d, Fourier shell correlation curves of the D1R-G<sub>s</sub> complex. e, Local resolution distribution of D1R-G<sub>s</sub> complex. **f-j** D2R-G<sub>i</sub> complexes preparation and cryo-EM data processing. f, Profiles of size-exclusion chromatography elution of the D2R-G<sub>i</sub> complex. g, Representative cryo-EM images (scale bar, 50 nm) and 2D classification (scale bar, 5 nm) of the D2R-G<sub>i</sub> complex. h, Workflow of cryo-EM single-particle analysis of the D2R-G<sub>i</sub> complex. i, Local resolution distribution of D2R-G<sub>i</sub> complex. j, Fourier shell correlation curves of the D2R-G<sub>i</sub> complex.