

Supplementary information, Fig. S4

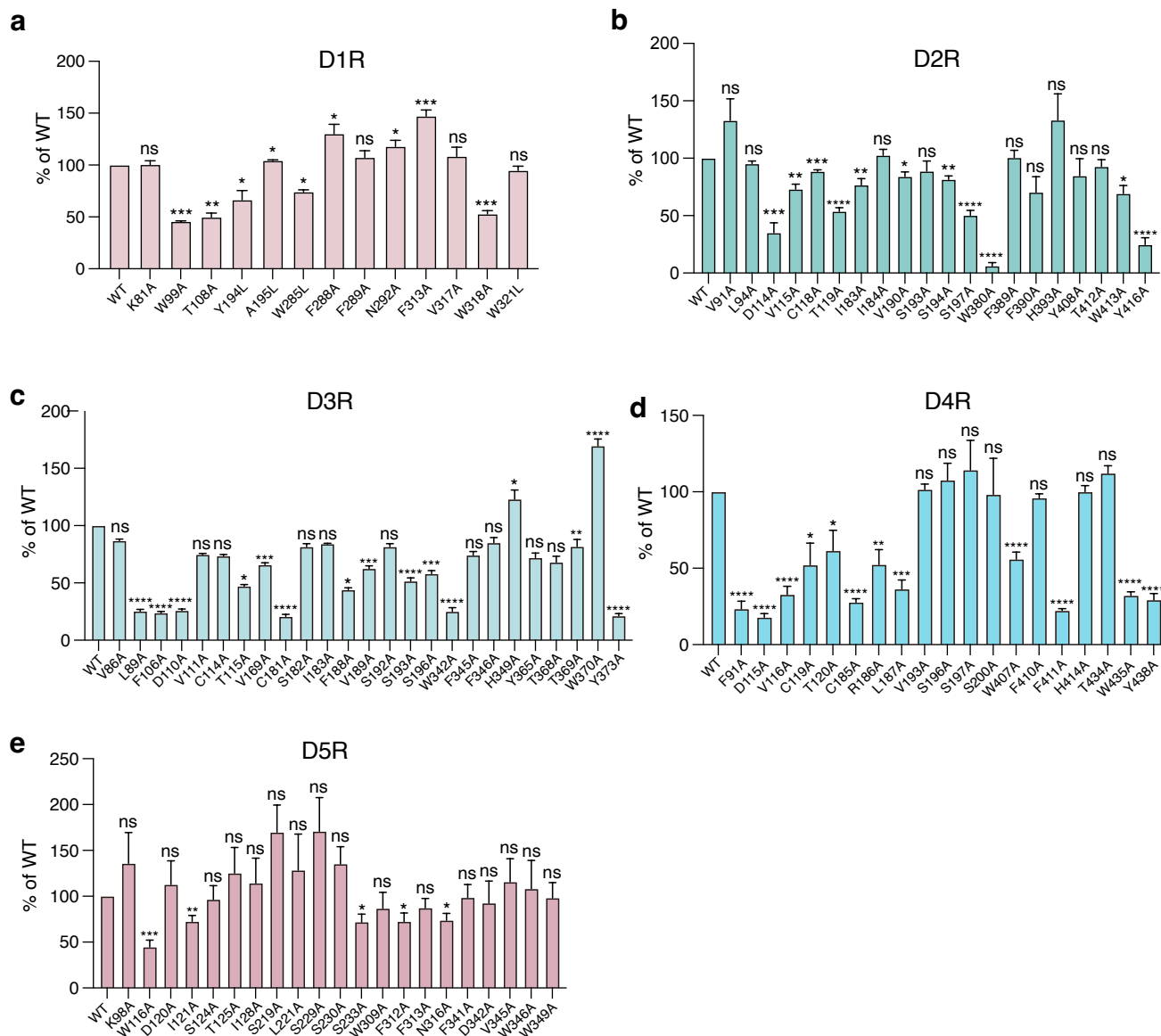


Fig. S4. Expression level of WT and mutated dopamine receptors. The experiments were performed for minimum of 3 independent assays in at least triplicate. Values are mean \pm SEM and moralized by WT. *P < 0.05, **P < 0.01, ***P < 0.001, ****P < 0.0001, ns, not significant (two-tailed unpaired t-test).