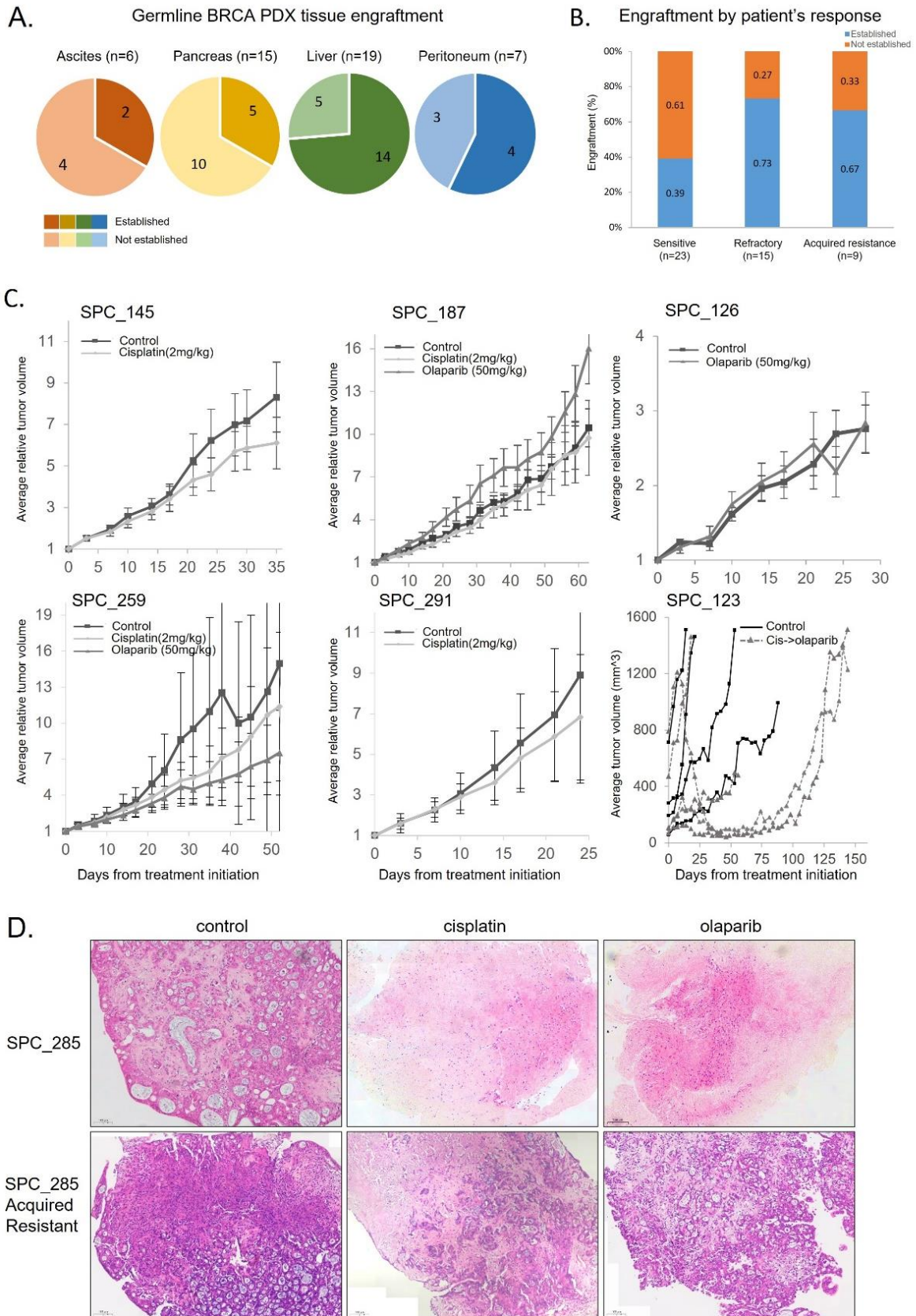


## Supplementary figure 1



**Supplementary figure 1: A.** Summary of PDX engraftment rate by tissue origin **B.** PDX engraftment percentage, denoted by the clinical response group (sensitive, refractory or acquired resistance). **C.** Tumor growth kinetics. Average relative tumor volume of control, cisplatin (2mg/kg; IP) or olaparib (50 mg/kg; IP)-treated mice on days from treatment initiation; SPC\_123 (left bottom) - 'In-vivo acquired resistance model'. Tumor volume of each mouse treated with control or cisplatin (2mg/kg) until day 28 followed by olaparib (50mg/kg; IP) until resistance emergence. **D.** H&E images of EVOG analysis of SPC\_285 PDX at sensitive time point and at in-vivo acquired resistance, treated with control (DMSO, left), cisplatin (100 M; middle) and olaparib (80 M; right) for 96 hours