

Supplementary information for

**Electroacupuncture alleviated depression-like behaviors in ventromedial prefrontal cortex of chronic unpredictable mild stress-induced rats: Increasing synaptic transmission and phosphorylating dopamine transporter**

Xiaowen Cai, Mei Wu, Zhinan Zhang, Huacong Liu, Shengtao Huang, Jia Song, Siqiang Ren, Yong Huang

Xiaowen Cai is the first author and Mei Wu is the co-first author. Xiaowen Cai and Mei Wu contributed equally in this manuscript.

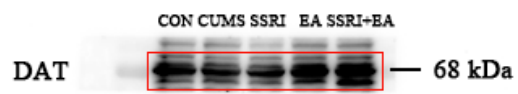
Correspondence should be addressed to Yong Huang and Siqiang Ren.

This file includes:

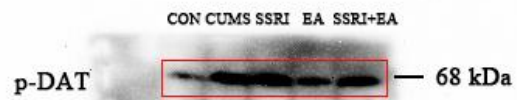
Original gel/blot images of each cropped gel/blot appearing in the manuscript.

**Full unedited gel/blots for Figure 5**

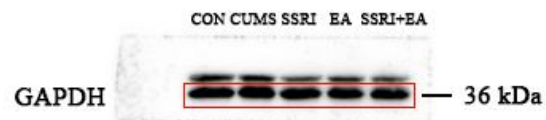
Dopamine transporter (DAT)



Phosphorylated DAT (p-DAT)

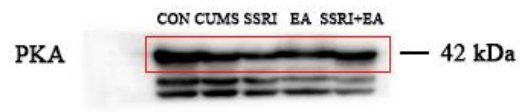


GAPDH

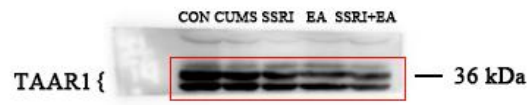


**Full unedited gel/blots for Figure 6**

Protein kinase A (PKA)



Trace amine-associated receptor 1 (TAAR1)



GAPDH

