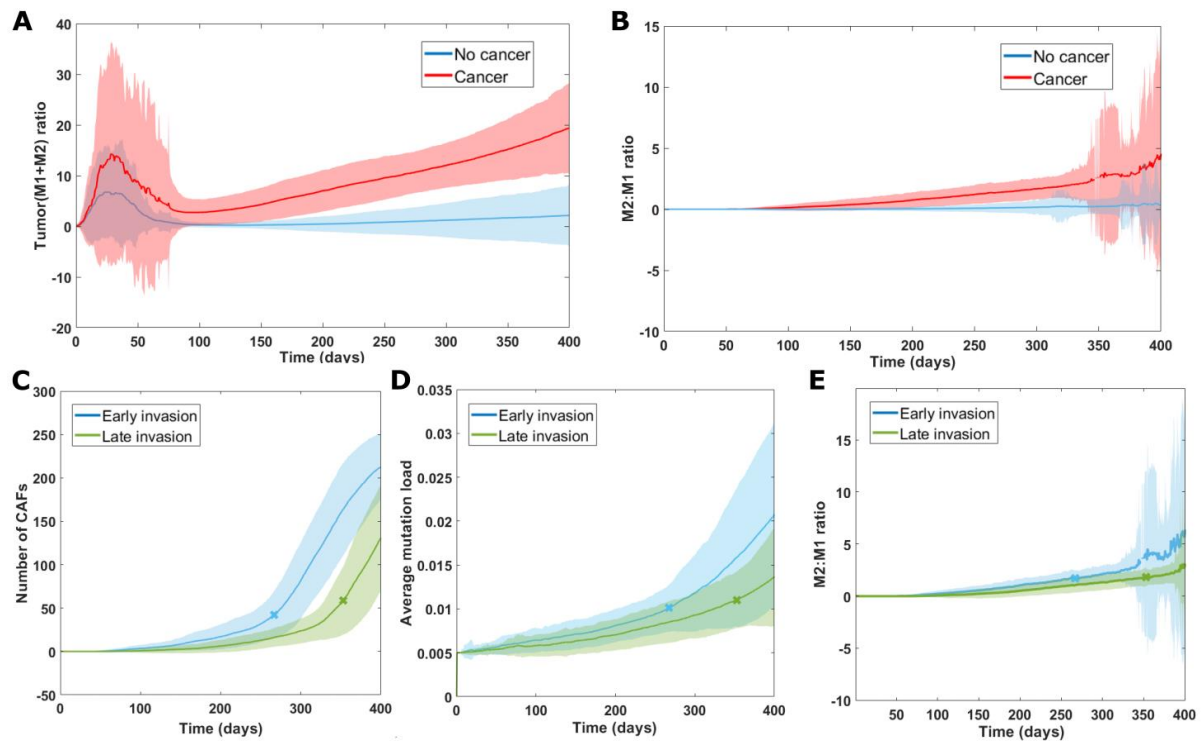


**Supplementary Figure 2. Comparison of cancer and non-cancer simulations**



Supplementary Figure 2. Cancer and non cancer simulation comparison. Average results (including standard deviation in the shaded area) for simulations using the standard parameter values (as described in table S2). **A.** Tumor cell to macrophage ratio (M1+M2) both for the simulations that resulted in cancer (180/500) and that did not result in cancer (320/500). **B.** Ratio of M2:M1 macrophages for non-cancer and cancer cases. **C.** Number of CAFs over time for all cancer cases in groups of early and late invasion (invasion time indicated with a cross). **D.** Average mutational load for all cancer cases of early and late invasion (invasion time indicated with a cross). **E.** M2:M1 ratio for all cancer cases (invasion time indicated with a cross).