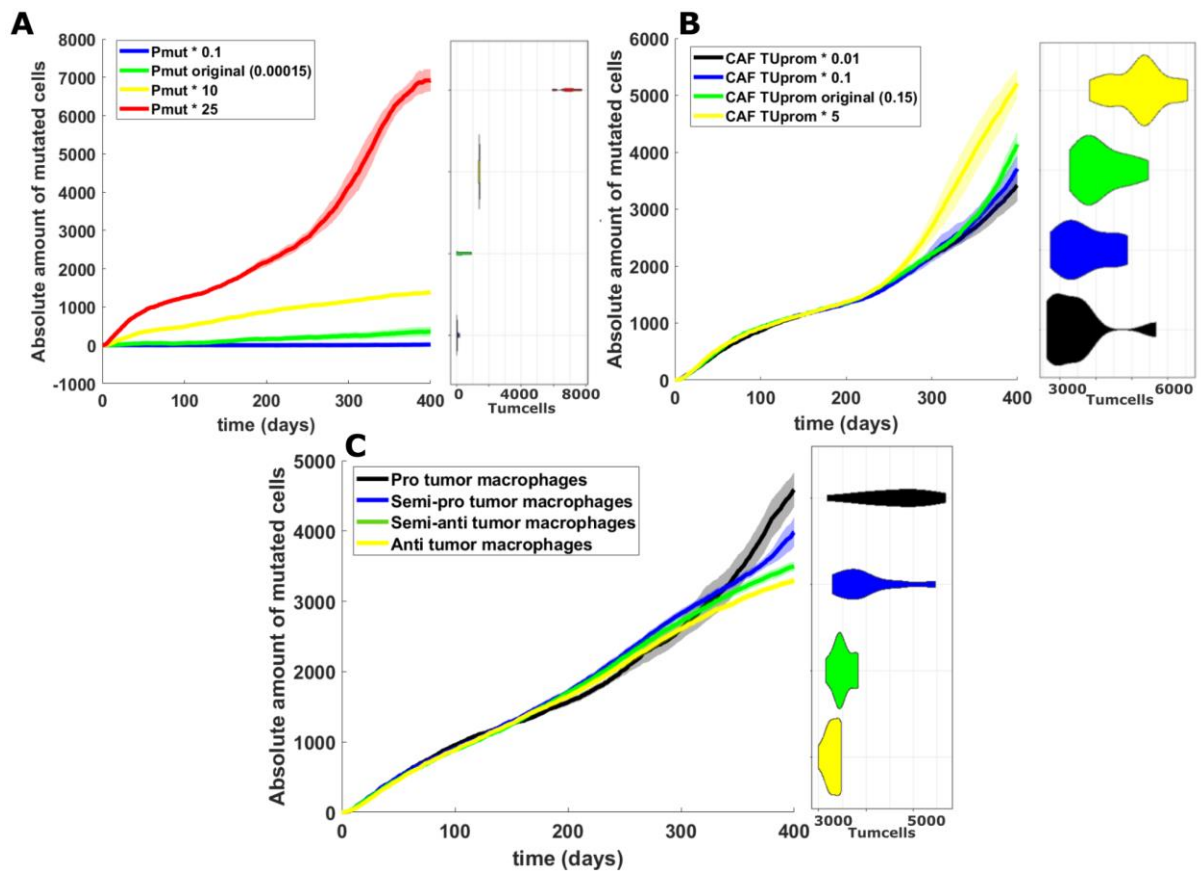


Supplementary Figure 3. Sensitivity analysis most sensitive model parameters



Supplementary Figure 3. Follow-up sensitivity analysis. **A.** Sensitivity analysis of the probability to gain mutations for luminal cells. Next to this graph, the violin plot on the four different simulations is displayed. **B.** Sensitivity analysis of the probability for mutated cell proliferation promotion by CAFs. The violin plot is displayed next to the graph, the colors correspond to those displayed in the graph. **C.** Sensitivity analysis of the combined parameters for macrophages (M1 migration probability and mutation threshold). Pro-tumor macrophages have a lower threshold for transition towards pro-tumor phenotype and larger migration probability. Next to the graph, the violin plot for the four simulations is displayed