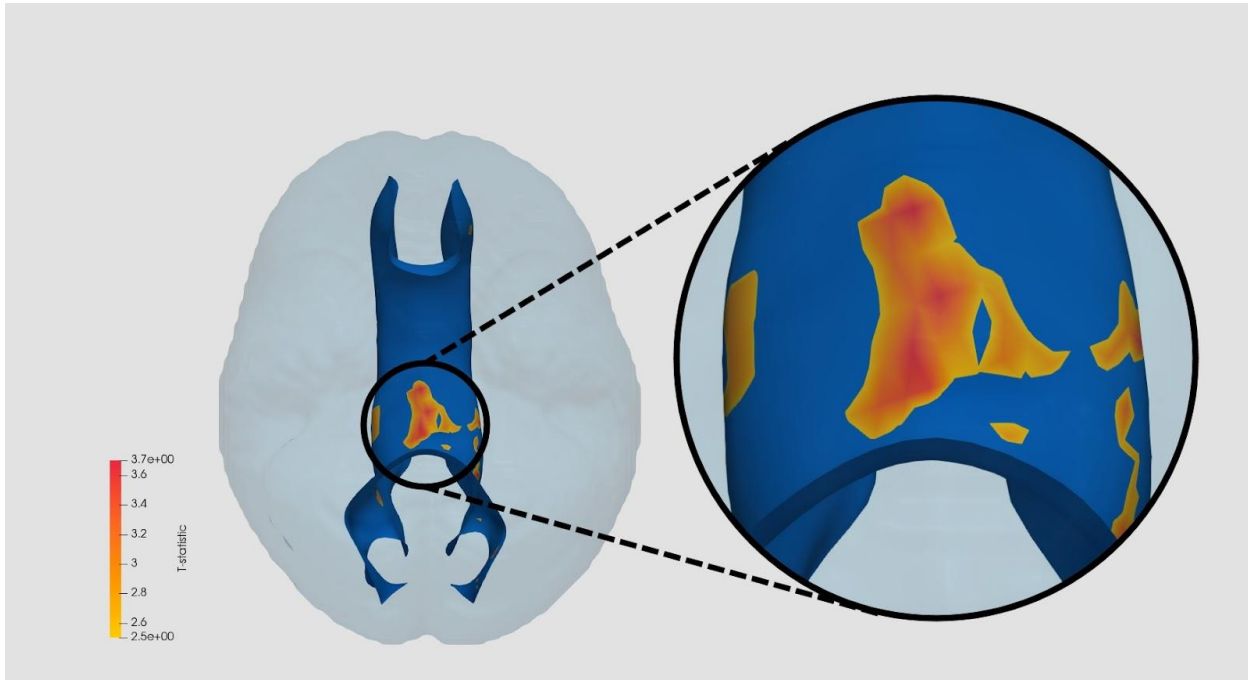


Supplementary Material

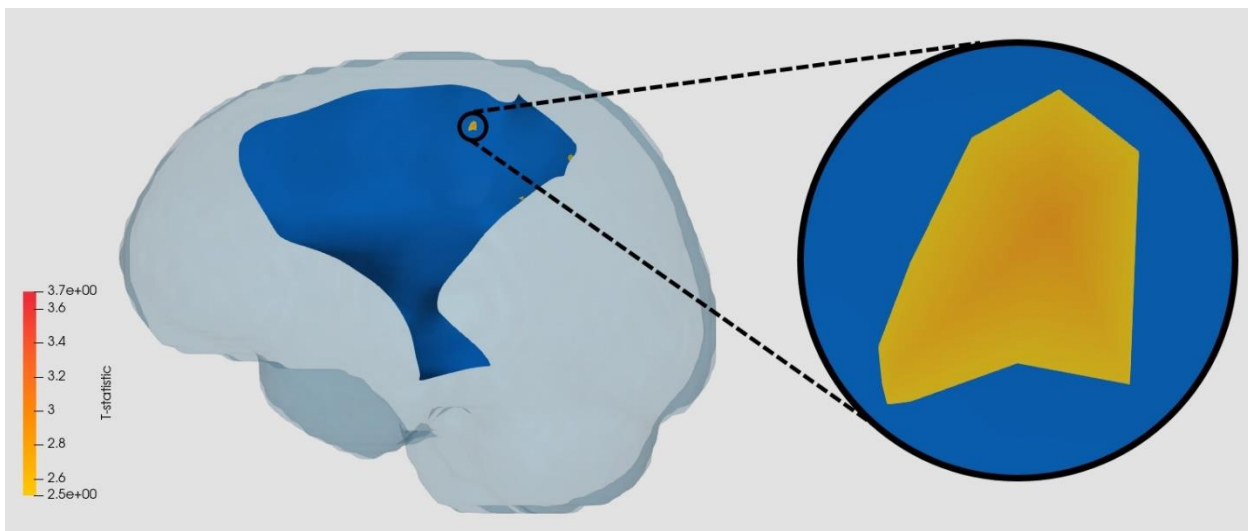
Surgery vs Healthy Controls

1 Corpus callosum



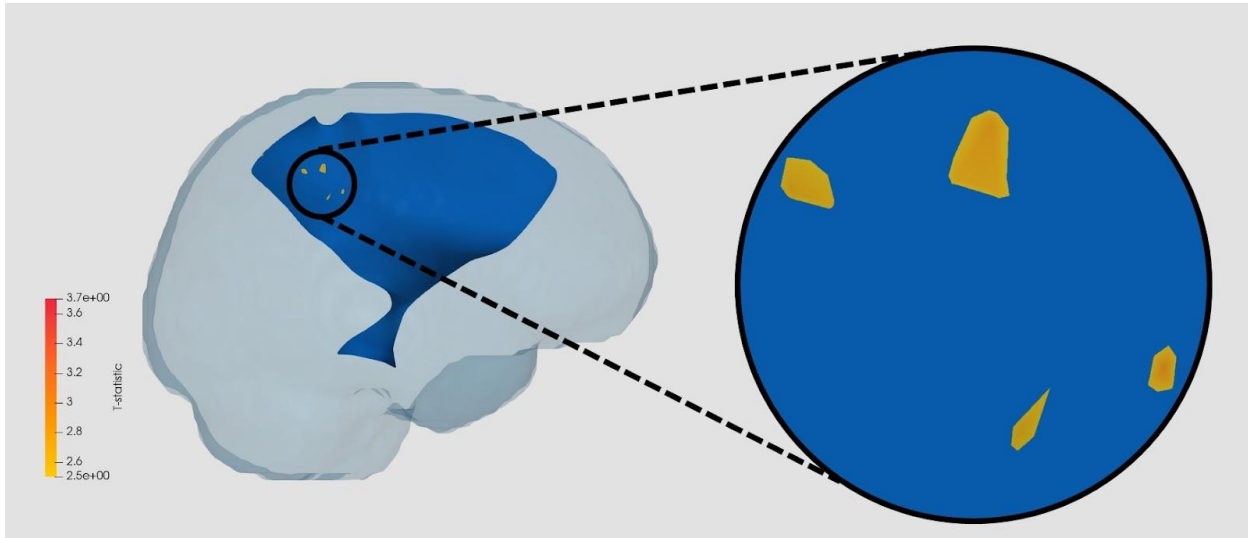
**WM Tract Results in the Surgery vs Healthy Controls comparison.** All results displayed in a transparent glass brain. The background tract is in blue while the clusters after multiple comparisons correction are displayed in a range from yellow to red depending on their t-value. Displayed here is an inferior facing axial view of the corpus callosum.

2 Left corticospinal tract



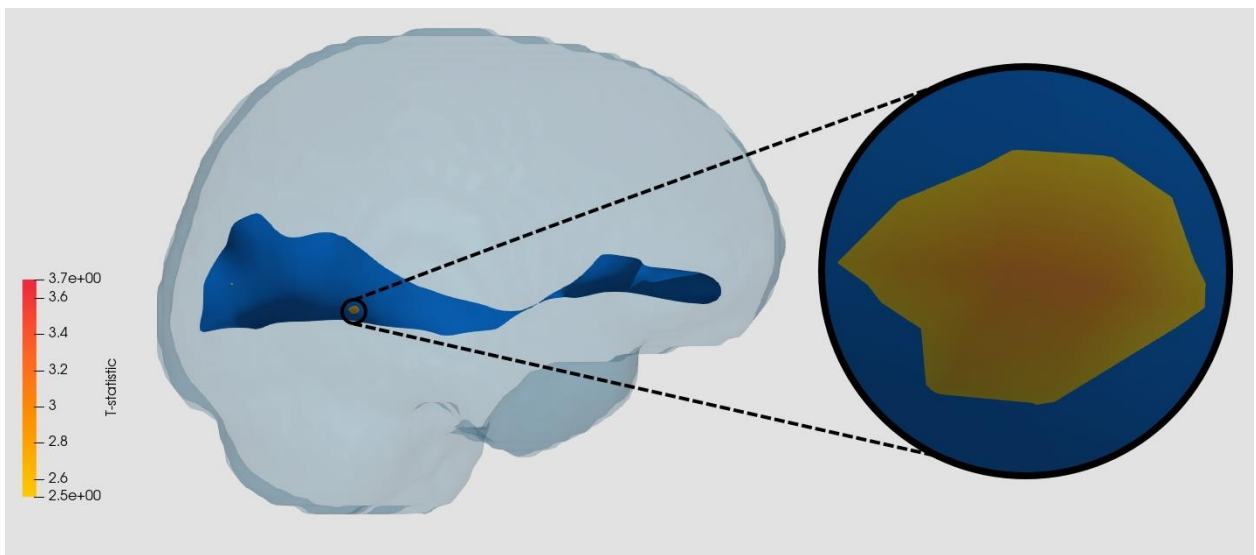
**WM Tract Results in the Surgery vs Healthy Controls comparison.** All results displayed in a transparent glass brain. The background tract is in blue while the clusters after multiple comparisons correction are displayed in a range from yellow to red depending on their t-value. Displayed here is a leftward facing sagittal view of the left corticospinal tract.

3 Right corticospinal tract



**WM Tract Results in the Surgery vs Healthy Controls comparison.** All results displayed in a transparent glass brain. The background tract is in blue while the clusters after multiple comparisons correction are displayed in a range from yellow to red depending on their t-value. Displayed here is a rightward facing sagittal view of the right corticospinal tract.

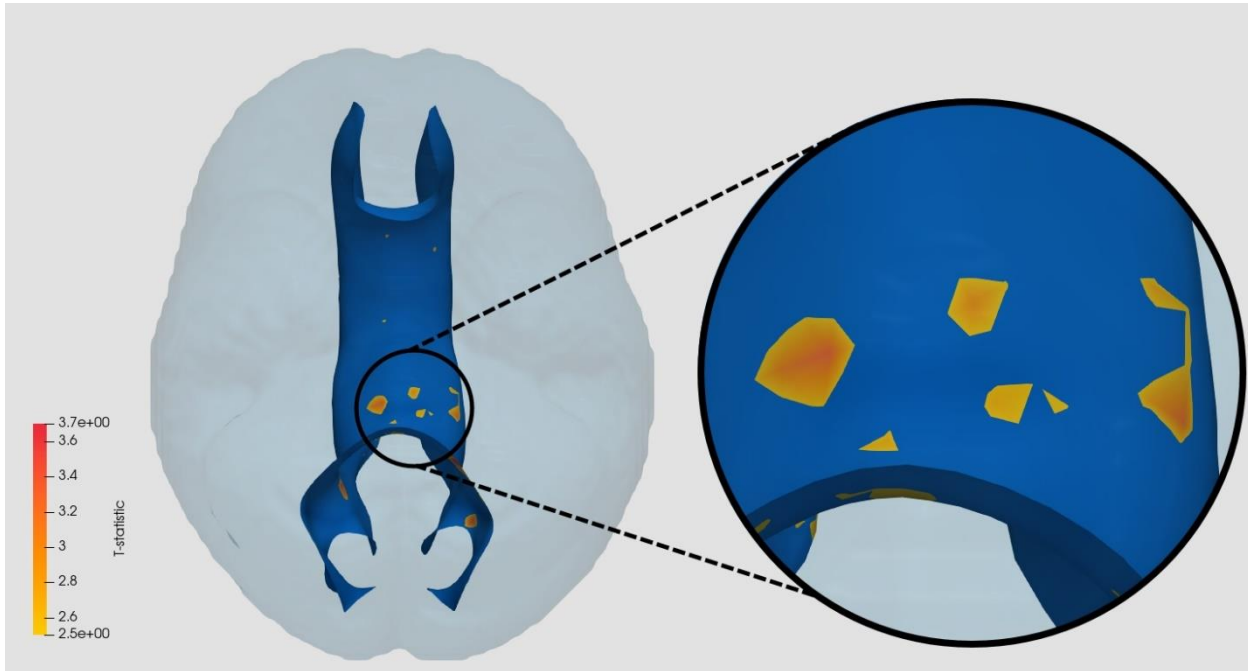
4 Right inferior fronto-occipital fasciculus



**WM Tract Results in the Surgery vs Healthy Controls comparison.** All results displayed in a transparent glass brain. The background tract is in blue while the clusters after multiple comparisons correction are displayed in a range from yellow to red depending on their t-value. Displayed here is a rightward facing sagittal view of the right inferior fronto-occipital fasciculus.

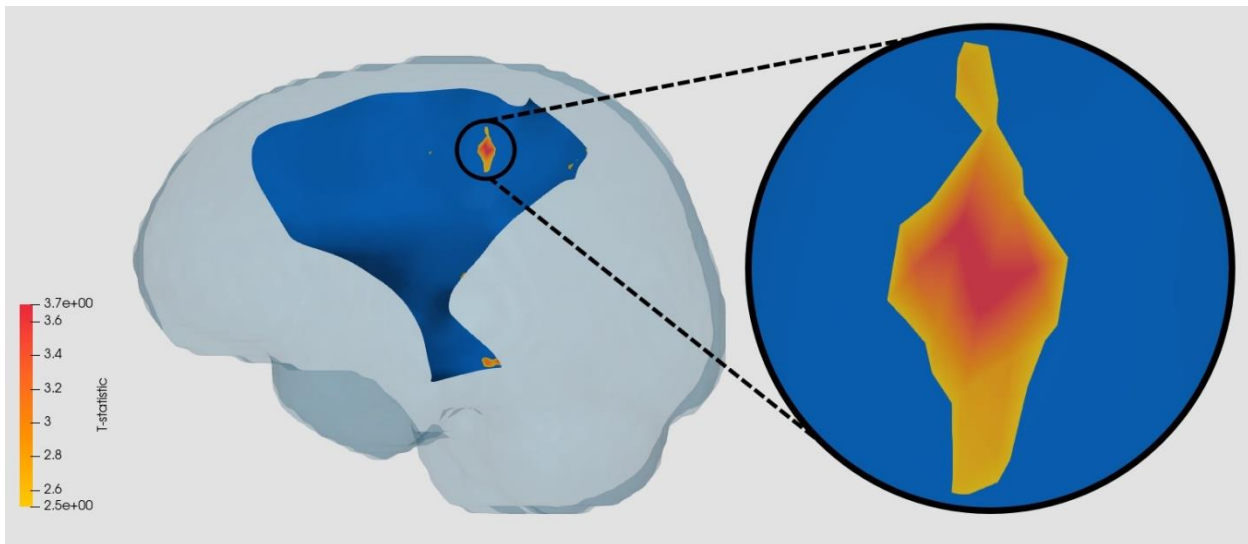
Surgery and Chemotherapy vs Healthy Controls

6 Corpus callosum



**WM Tract Results in the Surgery and Chemotherapy vs Healthy Controls comparison.** All results displayed in a transparent glass brain. The background tract is in blue while the clusters after multiple comparisons correction are displayed in a range from yellow to red depending on their t-value. Displayed here is an inferior facing axial view of the corpus callosum.

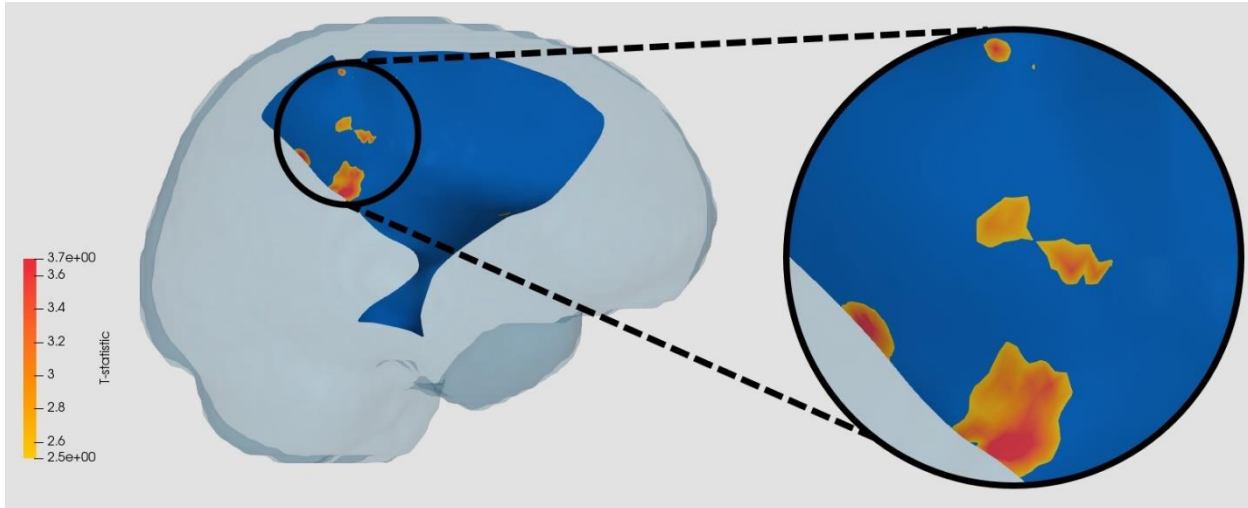
7 Left corticospinal tract



**WM Tract Results in the Surgery and Chemotherapy vs Healthy Controls comparison.** All results displayed in a transparent glass brain. The background tract is in blue while the clusters after

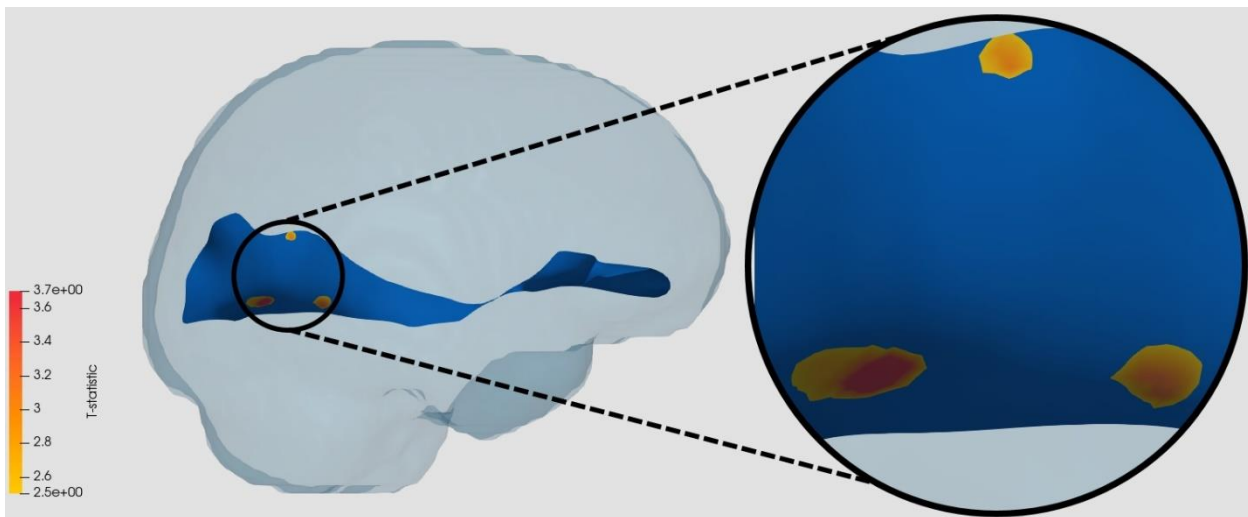
multiple comparisons correction are displayed in a range from yellow to red depending on their t-value. Displayed here is a leftward facing sagittal view of the left corticospinal tract.

### 8 Right corticospinal tract



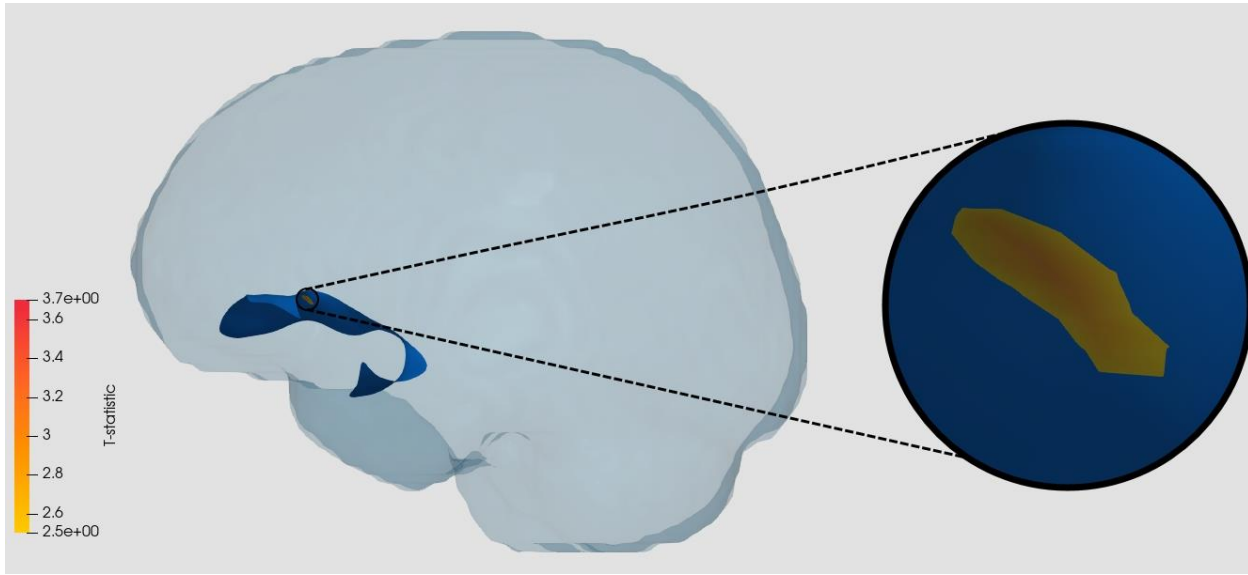
**WM Tract Results in the Surgery and Chemotherapy vs Healthy Controls comparison.** All results displayed in a transparent glass brain. The background tract is in blue while the clusters after multiple comparisons correction are displayed in a range from yellow to red depending on their t-value. Displayed here is a rightward facing sagittal view of the right corticospinal tract.

### 9 Right inferior fronto-occipital fasciculus



**WM Tract Results in the Surgery and Chemotherapy vs Healthy Controls comparison.** All results displayed in a transparent glass brain. The background tract is in blue while the clusters after multiple comparisons correction are displayed in a range from yellow to red depending on their t-value. Displayed here is a rightward facing sagittal view of the right inferior fronto-occipital fasciculus.

10 Left uncinate fasciculus



**WM Tract Results in the Surgery and Chemotherapy vs Healthy Controls comparison.** All results displayed in a transparent glass brain. The background tract is in blue while the clusters after multiple comparisons correction are displayed in a range from yellow to red depending on their t-value. Displayed here is a leftward facing sagittal view of the left uncinate fasciculus