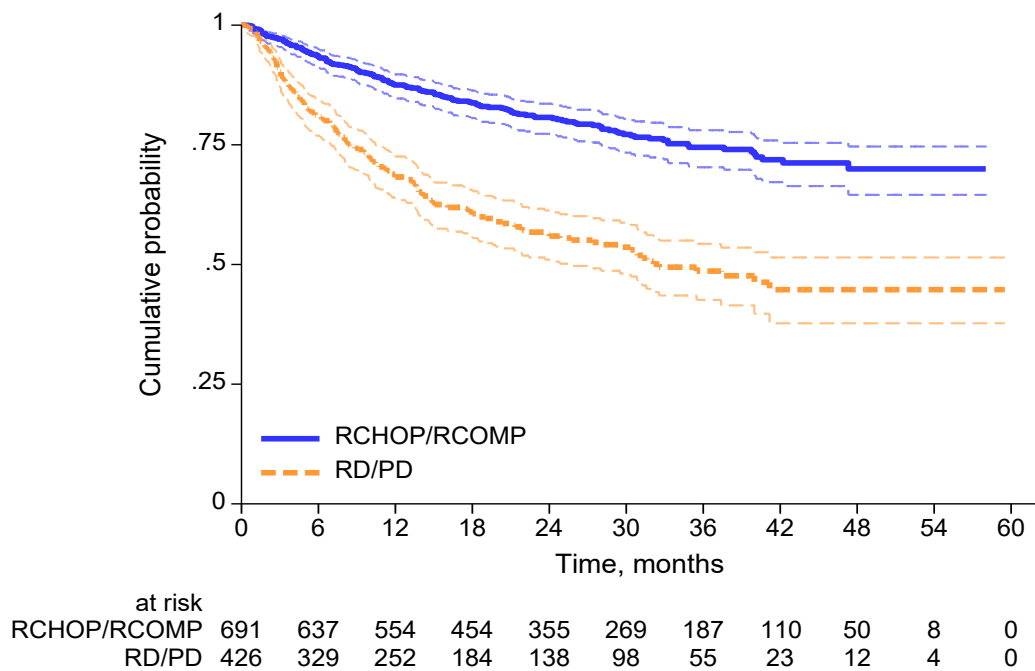


Figure S1. Overall survival of patients treated with full-dose R-CHOP/R-COMP vs reduced/palliative dose (RD/PD).



**Table S1.** Hazard ratio (HR) between R-COMP vs R-CHOP in raw data and adjusted by prognostic factors

R-COMP vs R-CHOP – OS	N	HR	95%CI	p-value
Raw data	691	1.36	0.99-1.87	0.059
Adjusted by sGA score	691	1.12	0.79-1.58	0.514
Adjusted by cardiac risk factor	691	1.26	0.90-1.75	0.175
Adjusted by EPI score	648	1.10	0.78-1.56	0.582
Adjusted in multivariable analysis	643	1.06	0.74-1.52	0.753

Multivariable Cox regression: adjusted by EPI + cardiac risk factor + B-symptoms + Bulky disease

R-COMP vs R-CHOP – PFS	N	HR	95%CI	p-value
Raw data	691	1.30	0.99-1.71	0.059
Adjusted by sGA score	691	1.12	0.79-1.58	0.514
Adjusted by cardiac risk factor	691	1.25	0.94-1.66	0.124
Adjusted by EPI score	648	1.11	0.83-1.49	0.475
Adjusted in multivariable analysis	643	1.11	0.82-1.50	0.512

Multivariable Cox regression: adjusted by EPI + cardiac risk factor + B symptoms + bulky disease

**Table S2.** Hazard ratio (HR) between R-COMP vs R-CHOP in raw data and adjusted by prognostic factors in cohort selected for inverse probability weight (IPW) Cox regression.

R-COMP vs R-CHOP - OS	HR	95%CI	p-value
Raw data	1.44	1.03-2.01	0.031
Adjusted by sGA score	1.19	0.83-1.71	0.335
Adjusted by cardiac risk factor	1.33	0.94-1.88	0.102
Adjusted by EPI score	1.13	0.80-1.59	0.500

Inverse probability weight (IPW)	1.01	0.68-1.50	0.948
----------------------------------	------	-----------	-------

R-COMP vs R-CHOP – PFS	HR	95%CI	p-value
Raw data	1.38	1.04-1.84	0.026
Adjusted by sGA score	1.25	0.93-1.70	0.145
Adjusted by cardiac risk factor	1.33	0.99-1.78	0.062
Adjusted by EPI score	1.11	0.83-1.49	0.475
Inverse probability weight (IPW)	1.30	0.92-1.85	0.142

Cohort of 643 patients: in overall survival (OS) 138 events, in progression-free survival (PFS) 188 events.

Figure S2: Check of balancing covariates between R-CHOP/R-COMP before (unadjusted) and after (adjusted) IPW

