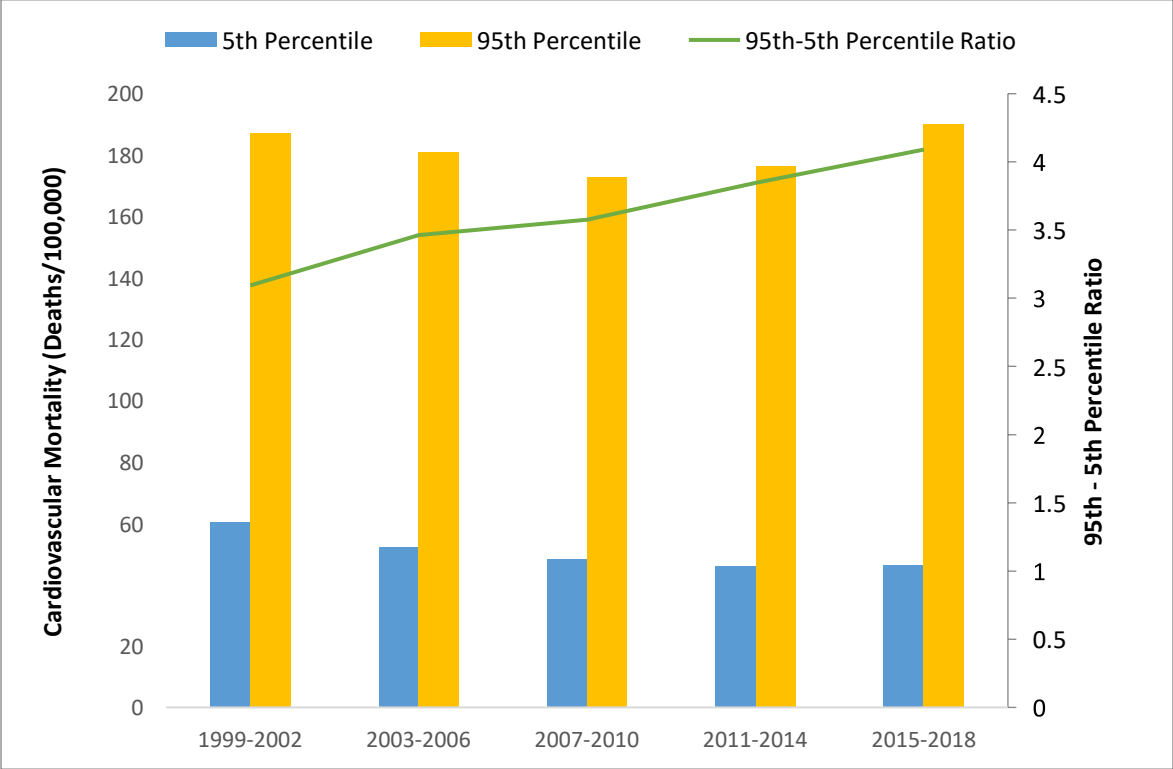
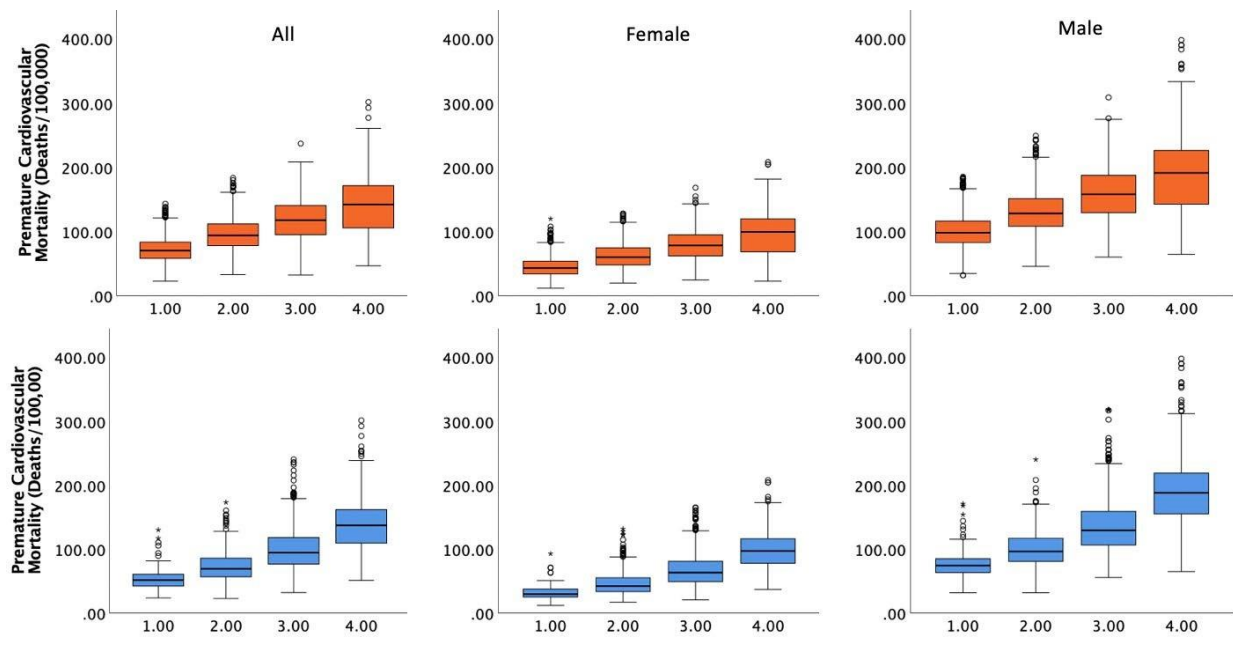


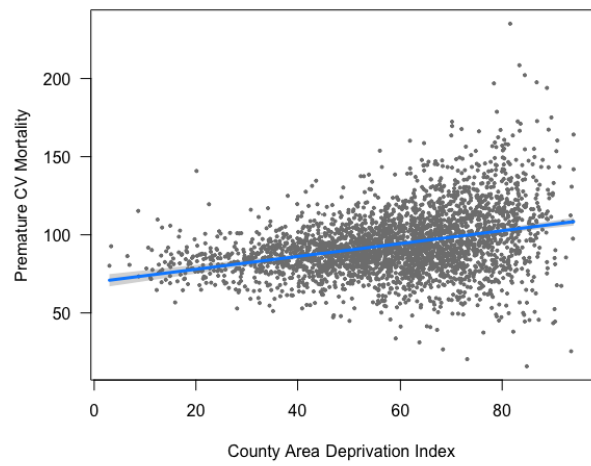
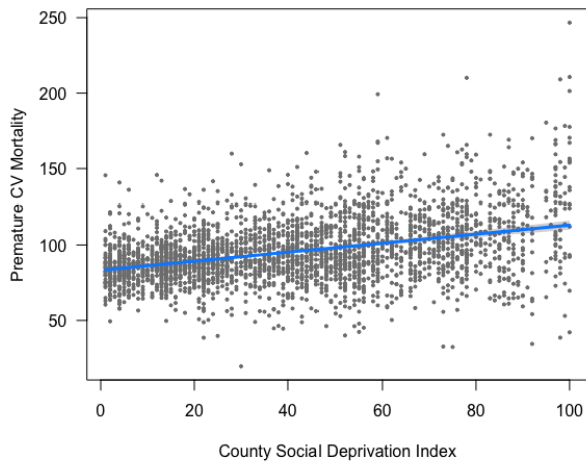
Supplementary Figure 1: Change in Premature CV mortality from 1999-2018.



**Supplementary Figure 2:** Temporal trend of age-adjusted cardiovascular mortality (deaths/100,000 people) from 1999-2018 in four-year clusters alongside the 95<sup>th</sup>-5<sup>th</sup> Percentile ratio (95<sup>th</sup> Percentile of CV mortality/5<sup>th</sup> Percentile of CV mortality).



Supplementary Figure 3: The distribution of premature cardiovascular mortality by deprivation index for all, women, and men.



**Supplementary Figure 4:** Multivariable linear regression including deprivation index and traditional risk factors (hypertension, hyperlipidemia, obesity, diabetes, current smoking, and physical inactivity).