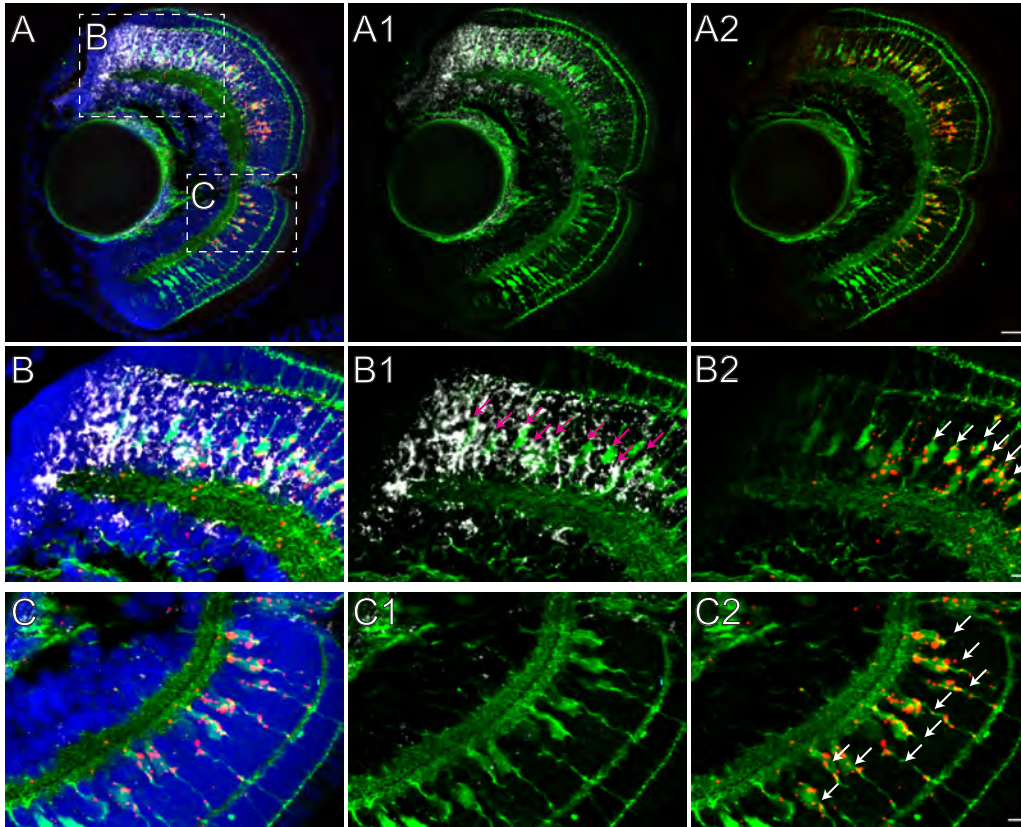
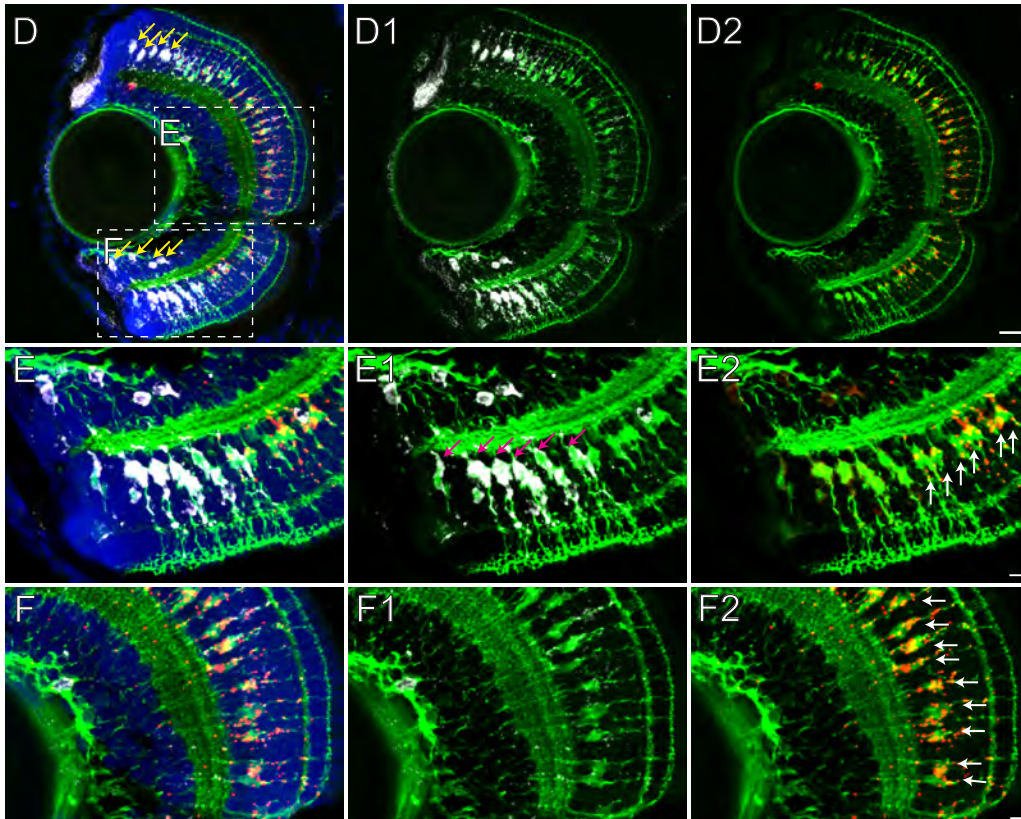


gfap:EGFP efnb2a fgf24 DAPI



gfap:EGFP rdh10a fgf24 DAPI



Supplementary Figure 6. (A-F) RNAscope *in situ* hybridization reveals the colocalization of *efnb2a* (magenta arrows in B1) *fgf24* (white arrows in B2, C2, E2 and F2), and *rdh10a* (magenta arrows in E1) with dorsal, central, and ventral *gfap:EGFP*+ Müller glia, respectively. A small subset of Müller glia in the dorsal retina and non-MG in ventral retina (yellow arrows in D) also express *rdh10a* (D-D2). Scale bars A-A2, D-D2 = 20 μ m; B-C2, E-F2 = 5 μ m.