

Fig. 1A raw data for Western blot using anti-I-CaD antibody

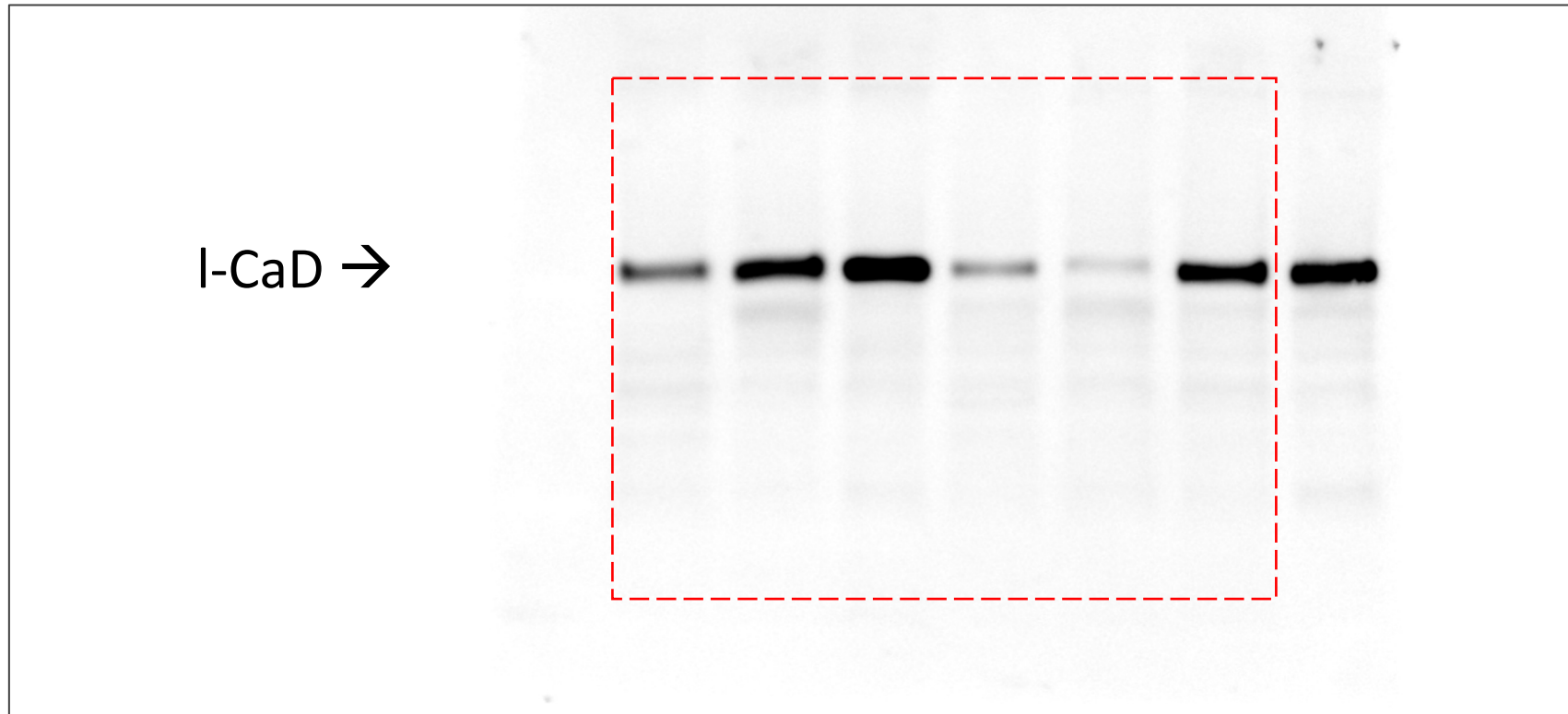


Fig. 1A raw data for Western blot using anti-actin antibody

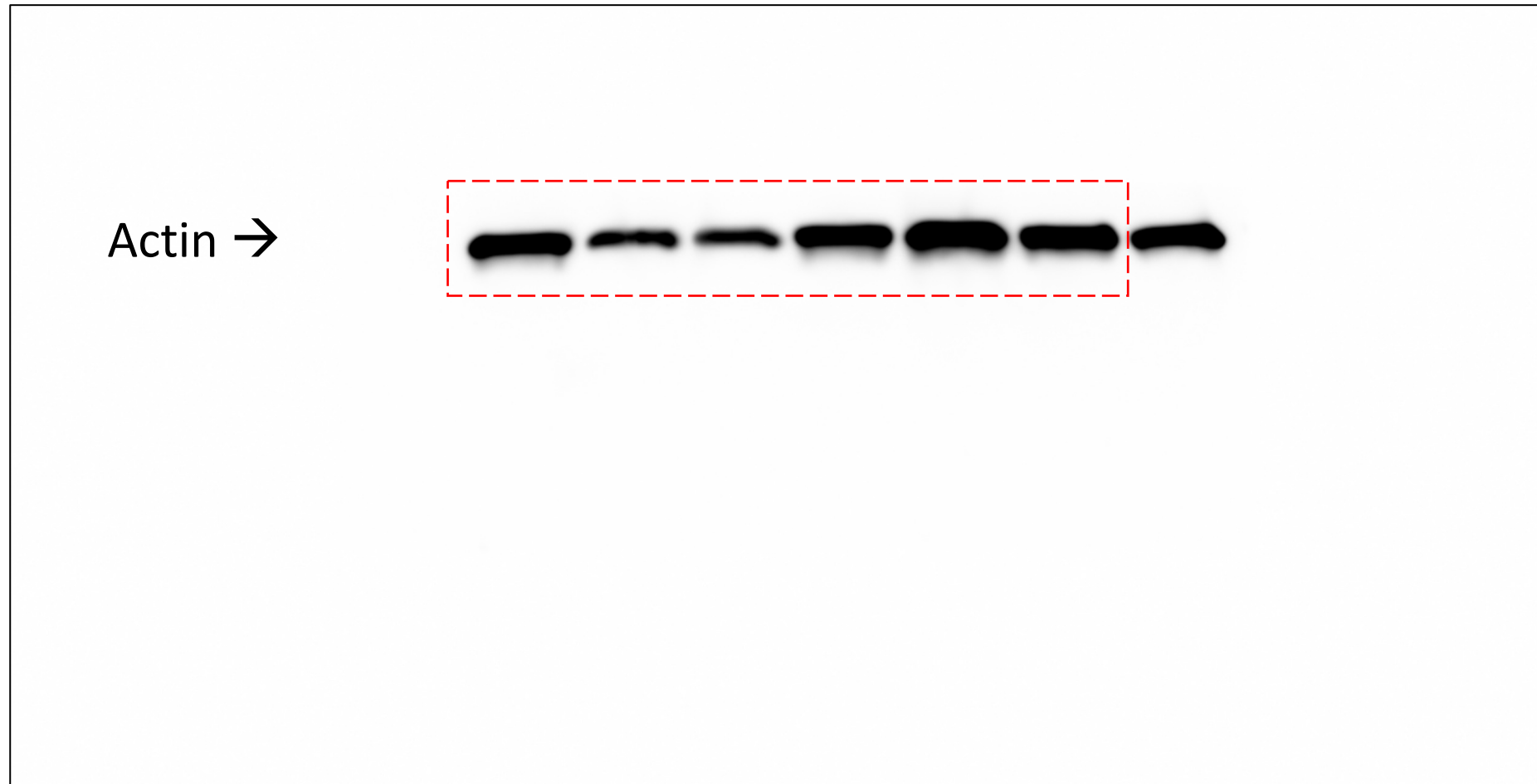


Fig. 1D raw data for Western blot using anti-I-CaD antibody (exp 1/3)

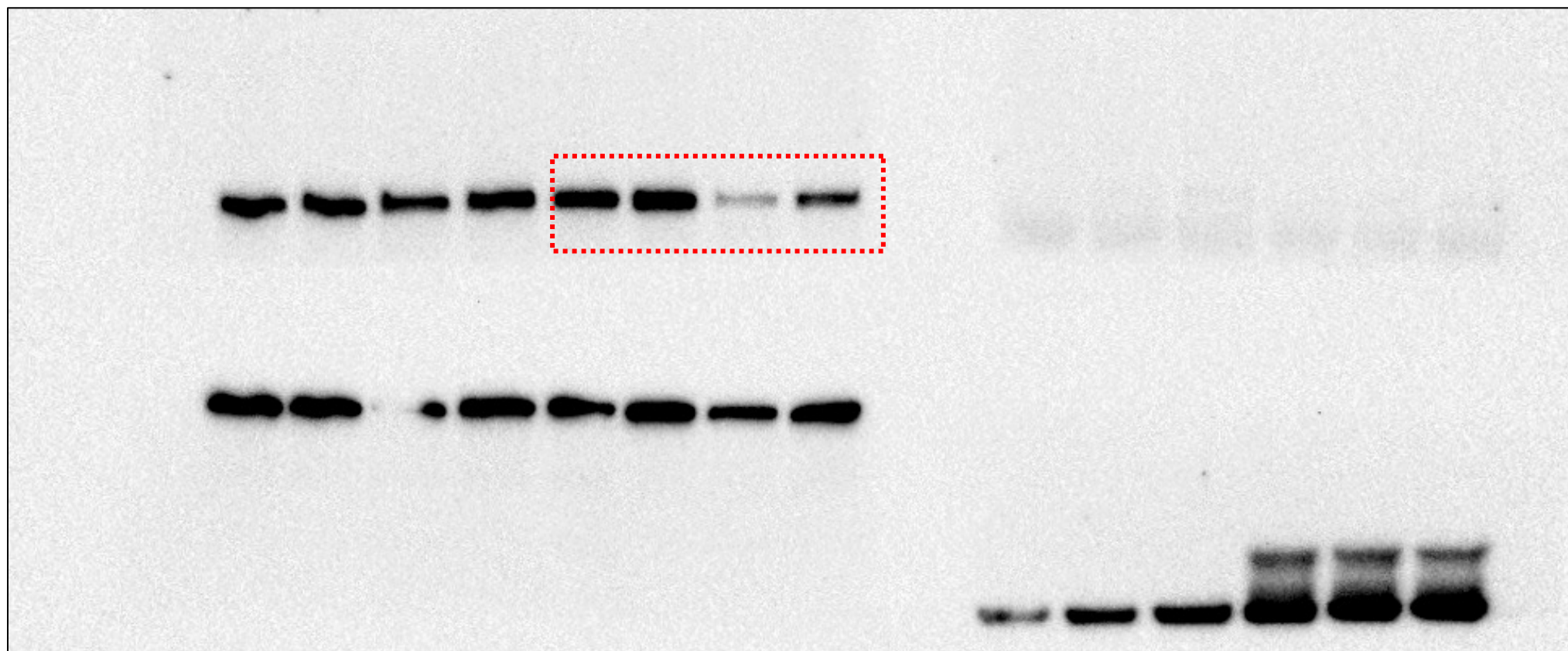


Fig. 1D raw data for Western blot using anti-actin antibody (exp 1/3)

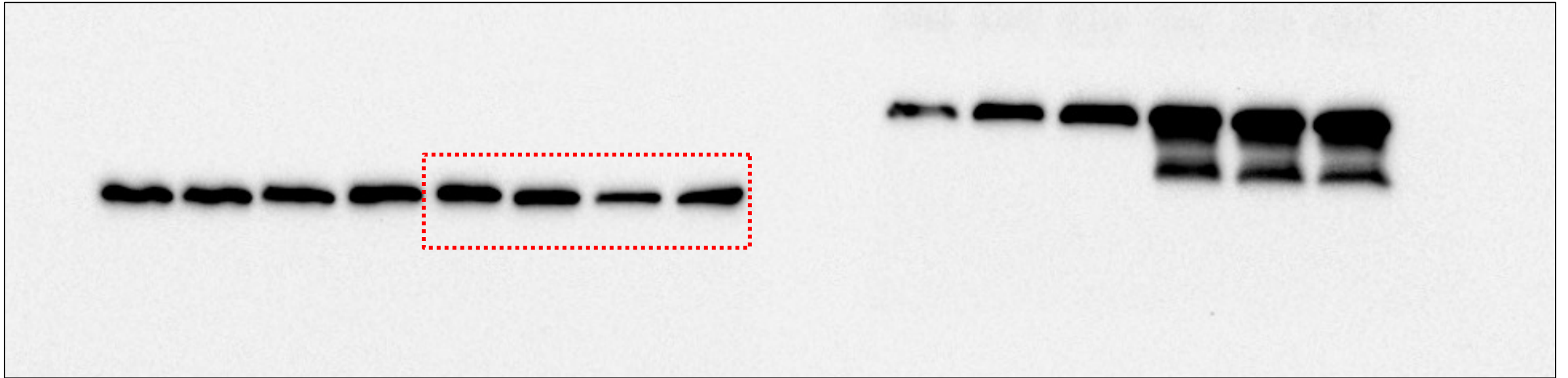


Fig. 1D raw data for Western blot using anti-I-CaD antibody (exp 2/3)

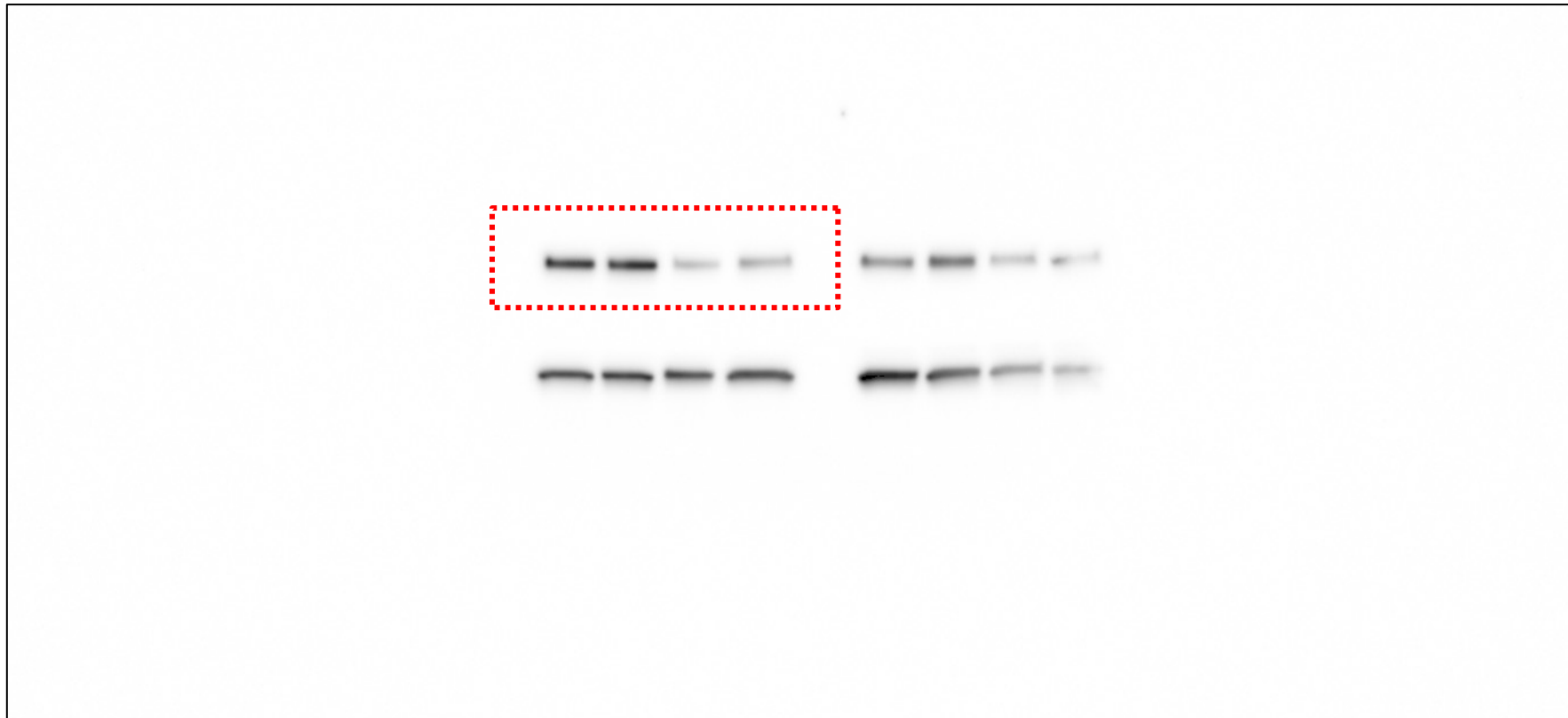


Fig. 1D raw data for Western blot using anti-actin antibody (exp 2/3)

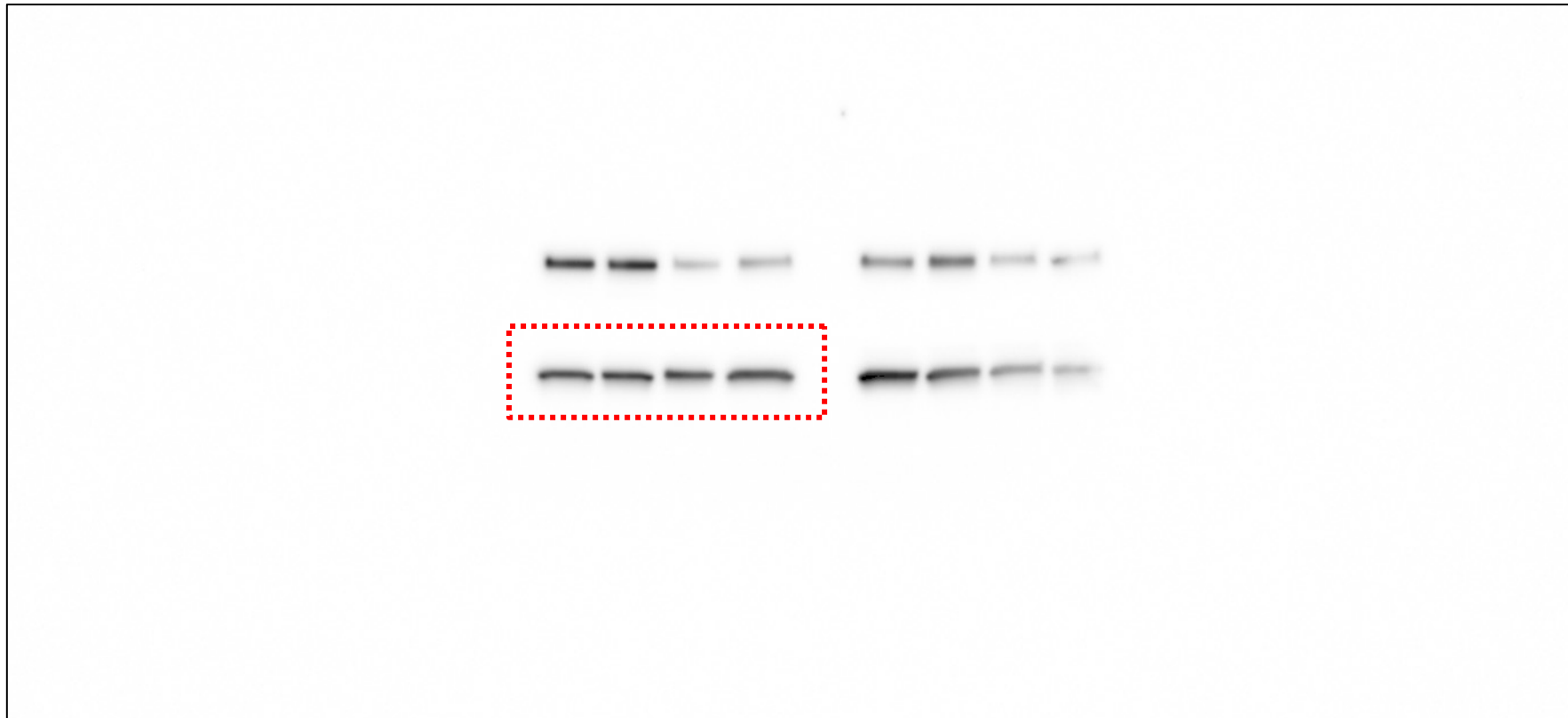


Fig. 1D raw data for Western blot using anti-I-CaD antibody (exp 3/3)

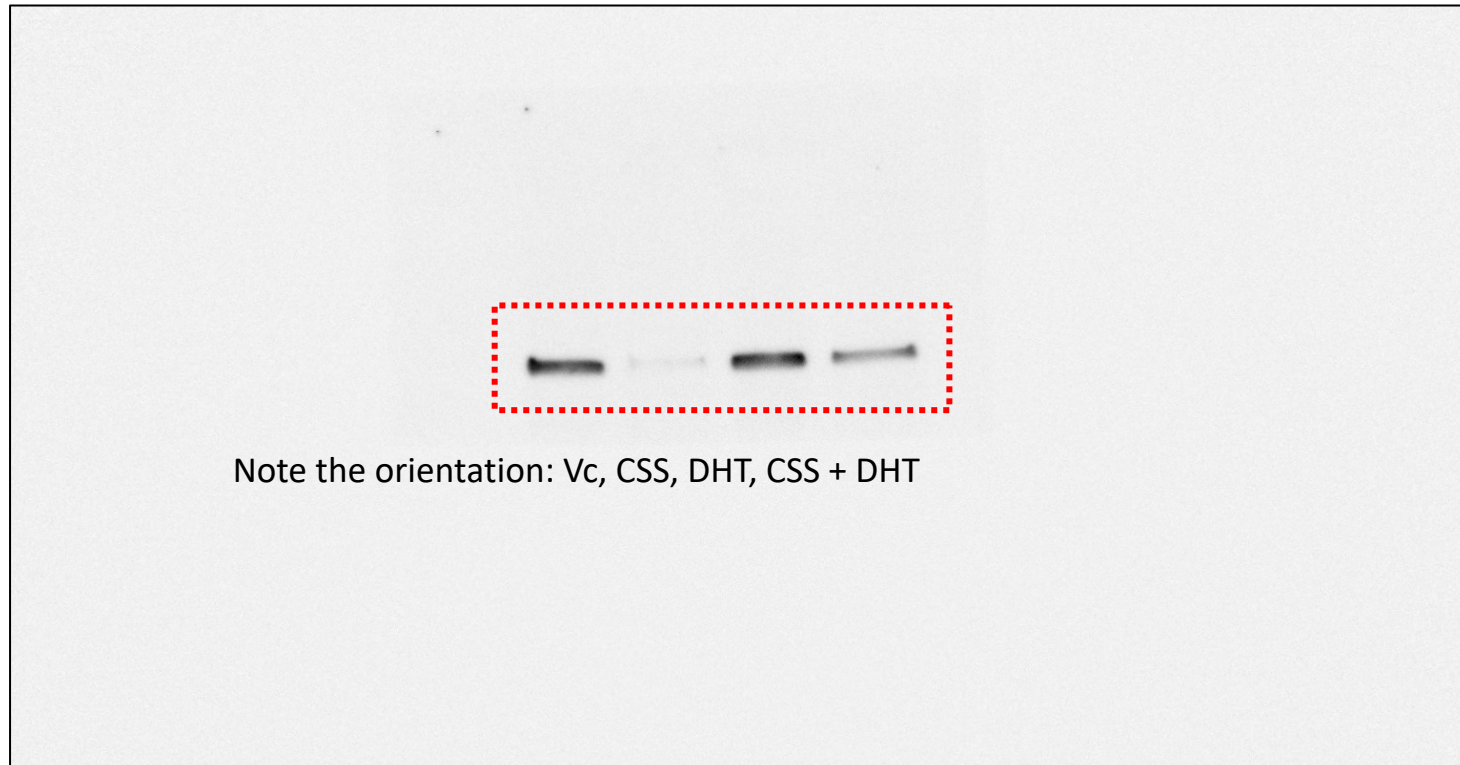


Fig. 1D raw data for Western blot using anti-actin antibody (exp 3/3)

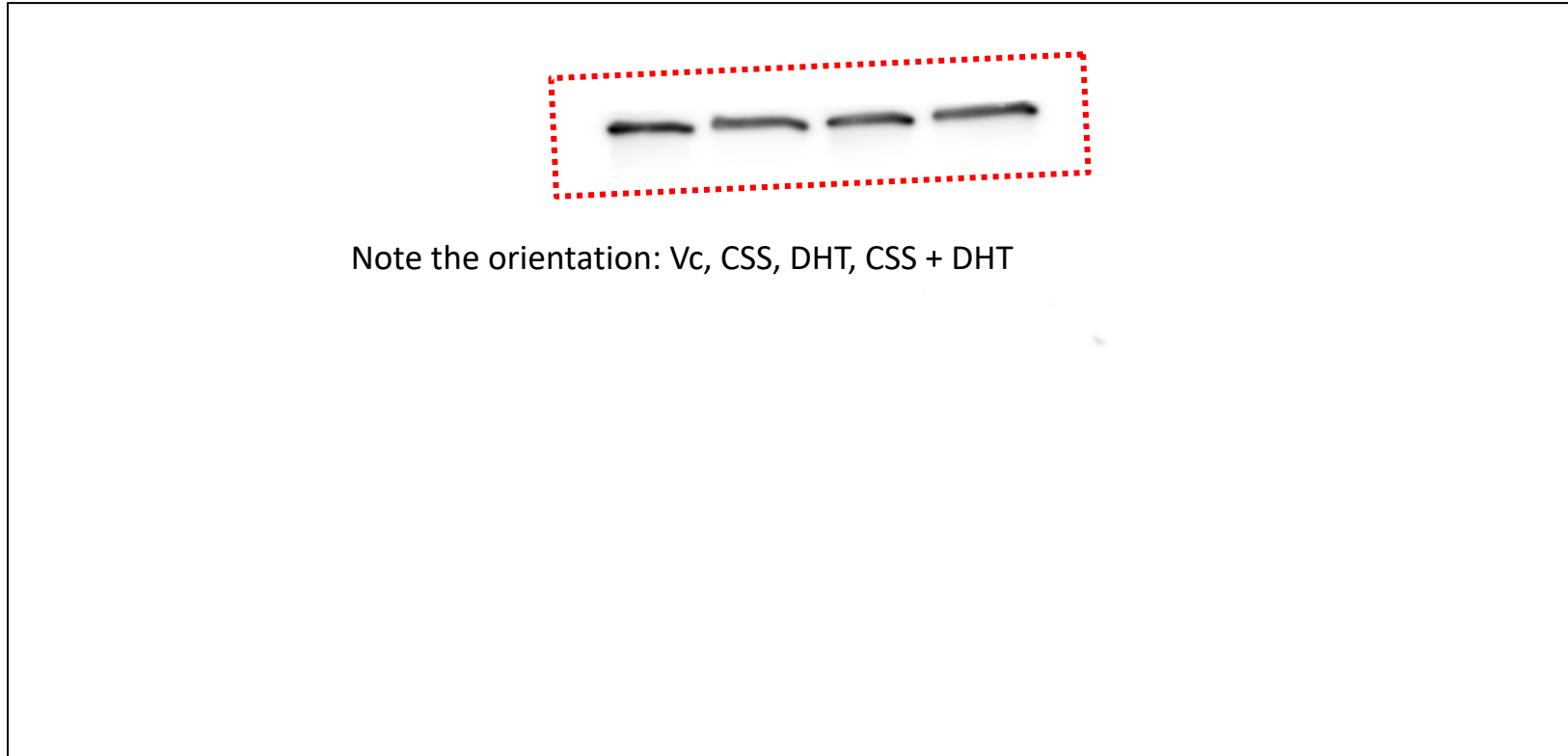


Fig. 2F raw data for Western blot using anti-I-CaD antibody

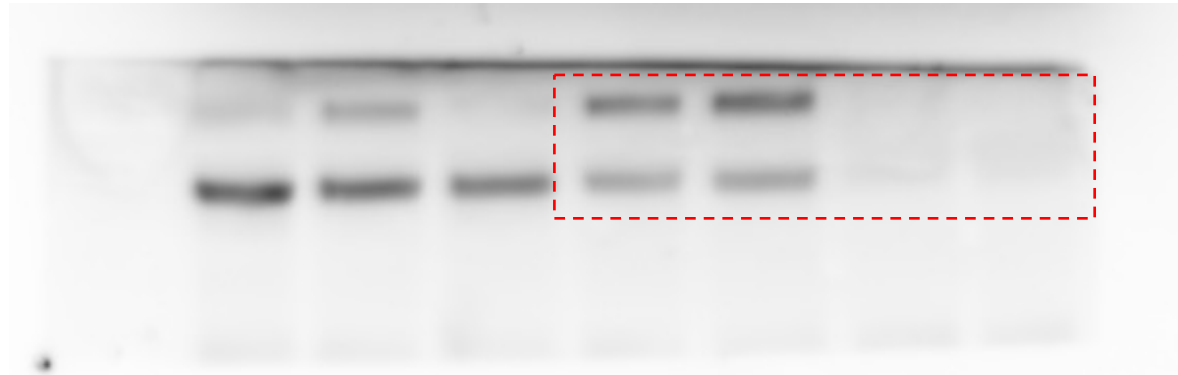


Fig. 2F raw data for Western blot using anti-vinculin antibody



Fig. 2J raw data for Western blot using anti-I-CaD antibody

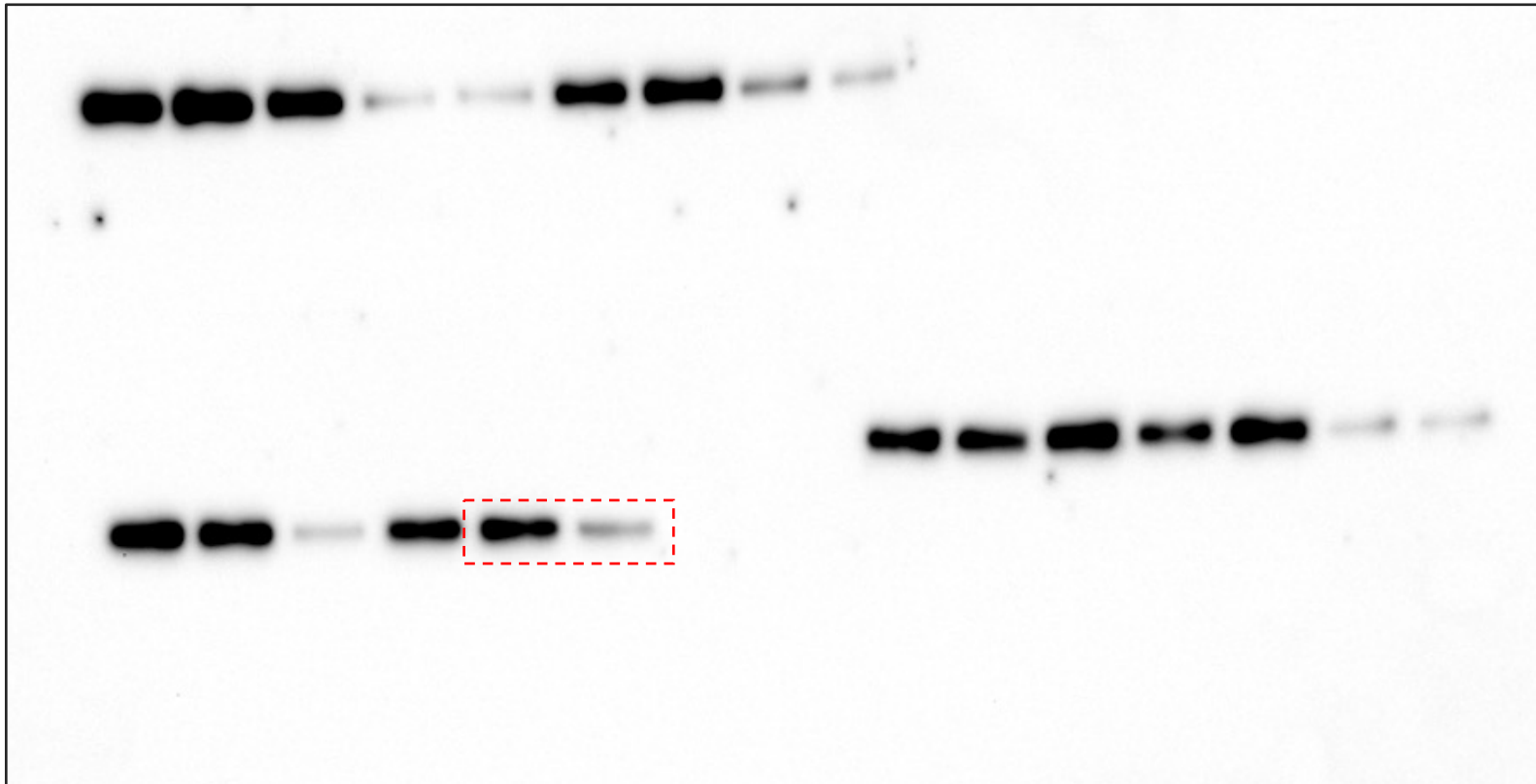


Fig. 2J raw data for Western blot using anti-vinculin antibody



Fig. 3B raw data for Western blot using anti-GR antibody

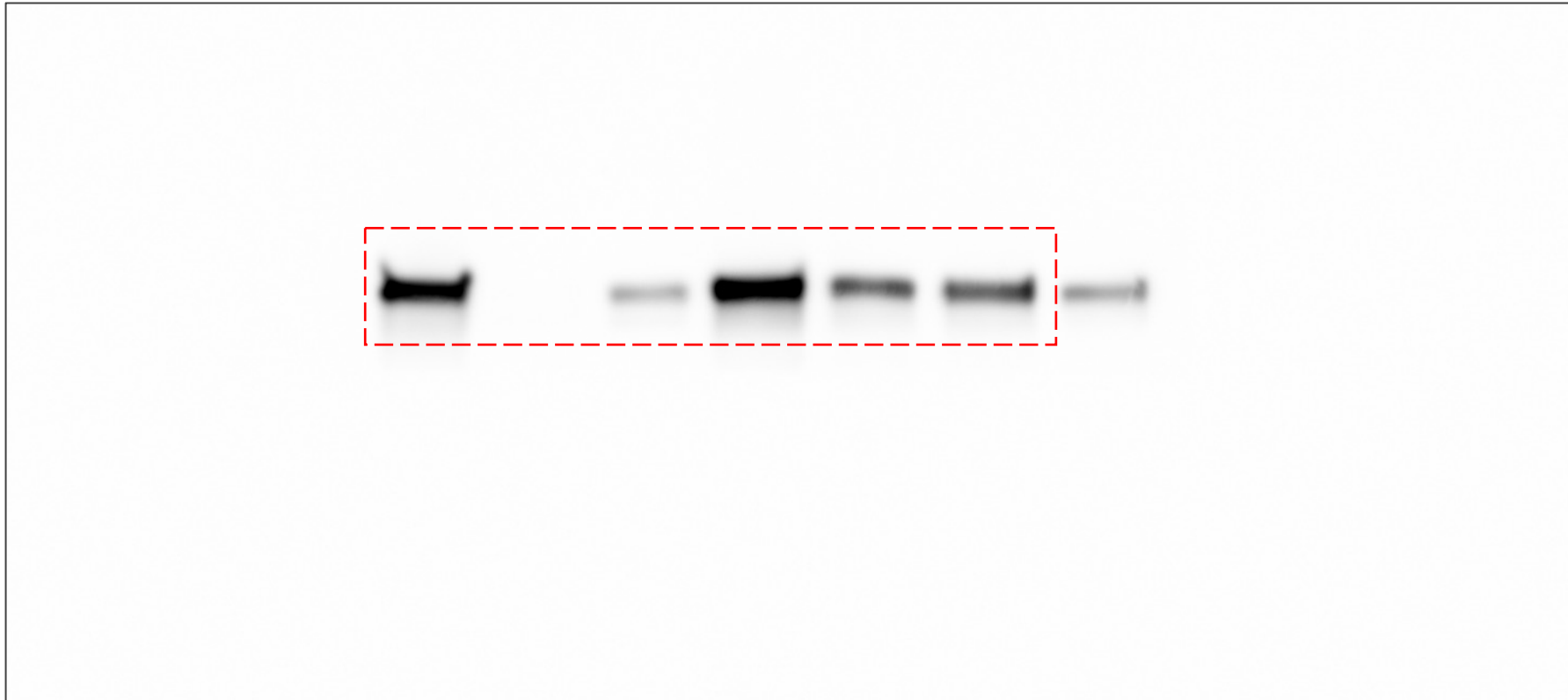


Fig. 3B raw data for Western blot using anti-actin antibody

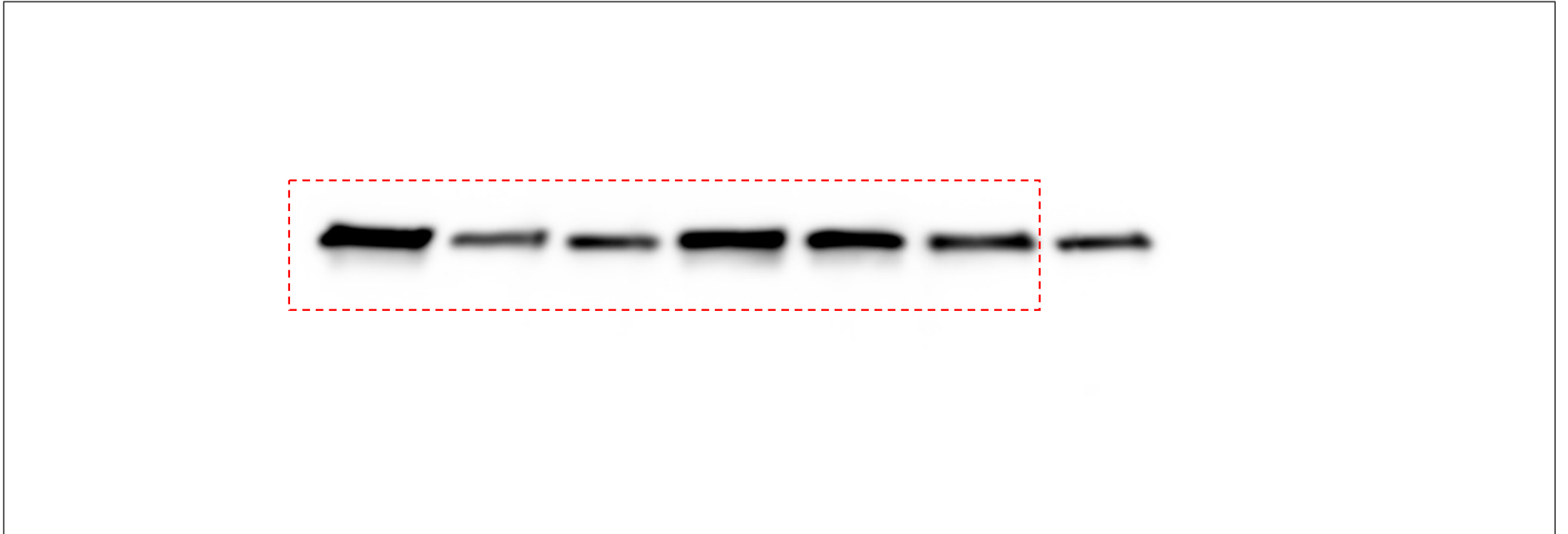


Fig. 3D raw data for Western blot using anti-I-CaD antibody (exp 1/3)

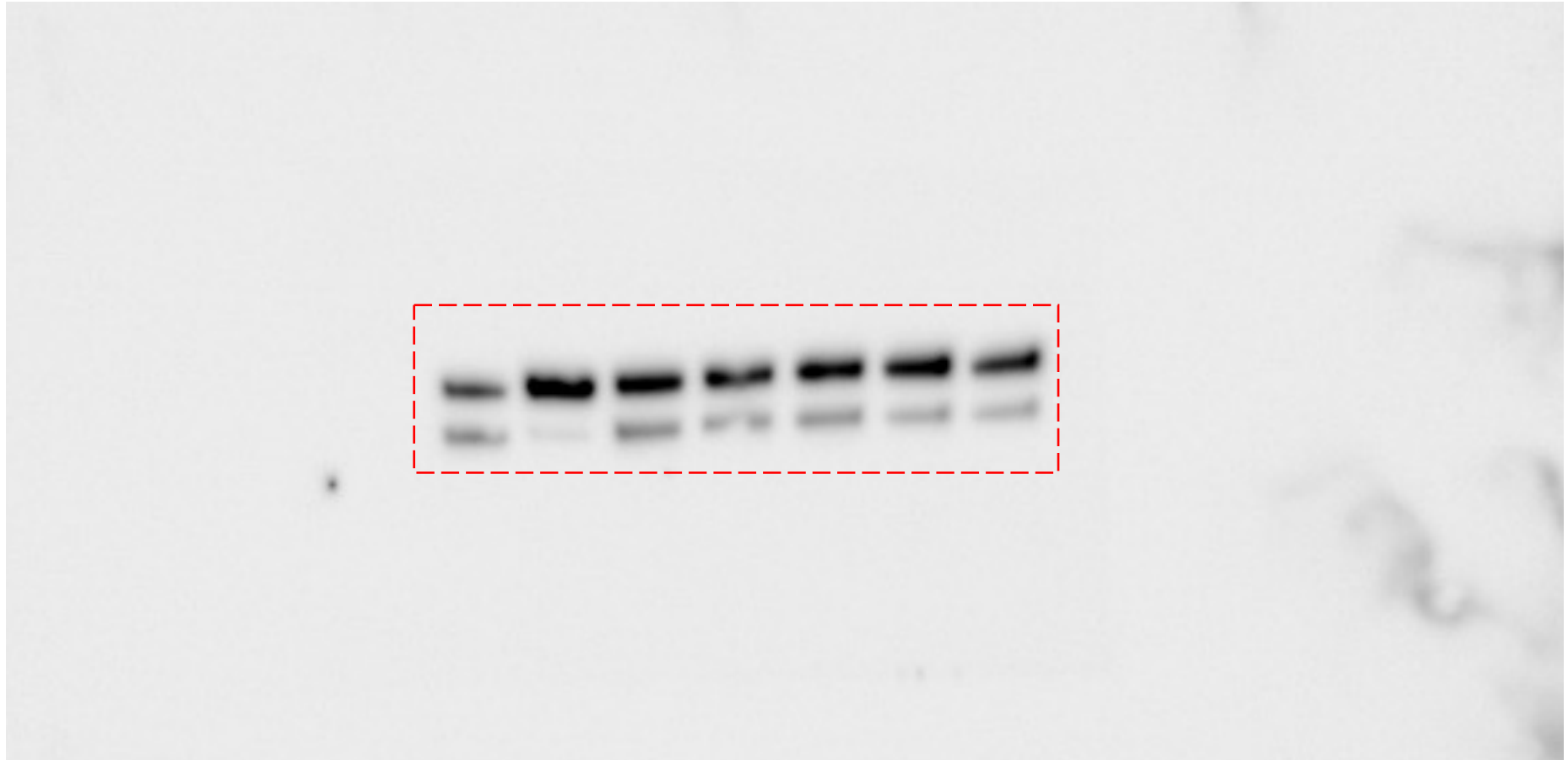


Fig. 3D raw data for Western blot using anti-vinculin antibody (exp 1/3)



Fig. 3D raw data for Western blot using anti-I-CaD antibody (exp 2/3)

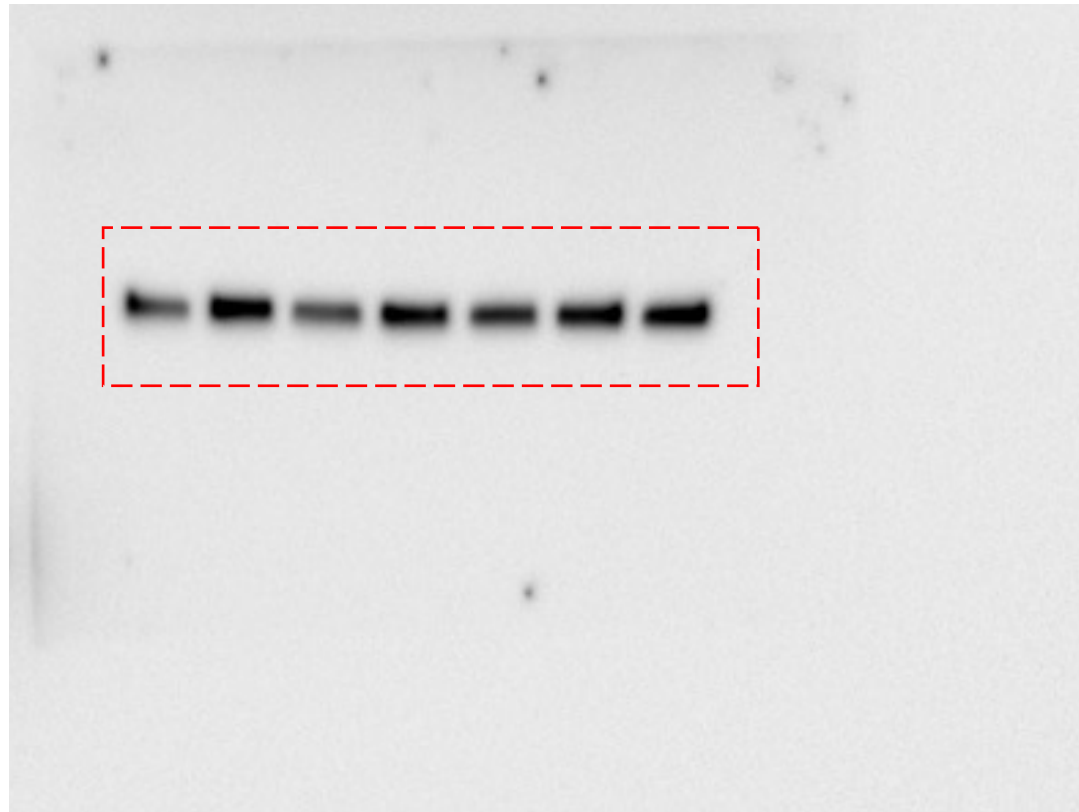


Fig. 3D raw data for Western blot using anti-actin antibody (exp 2/3)



Fig. 3D raw data for Western blot using anti-I-CaD antibody (exp 3/3)

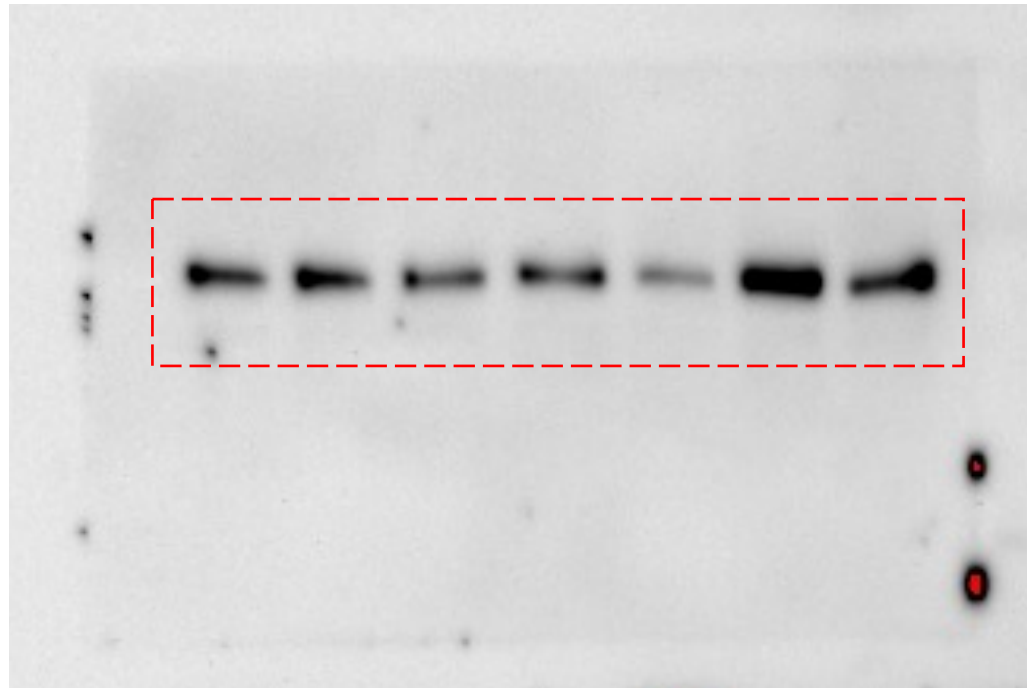


Fig. 3D raw data for Western blot using anti-actin antibody (exp 3/3)

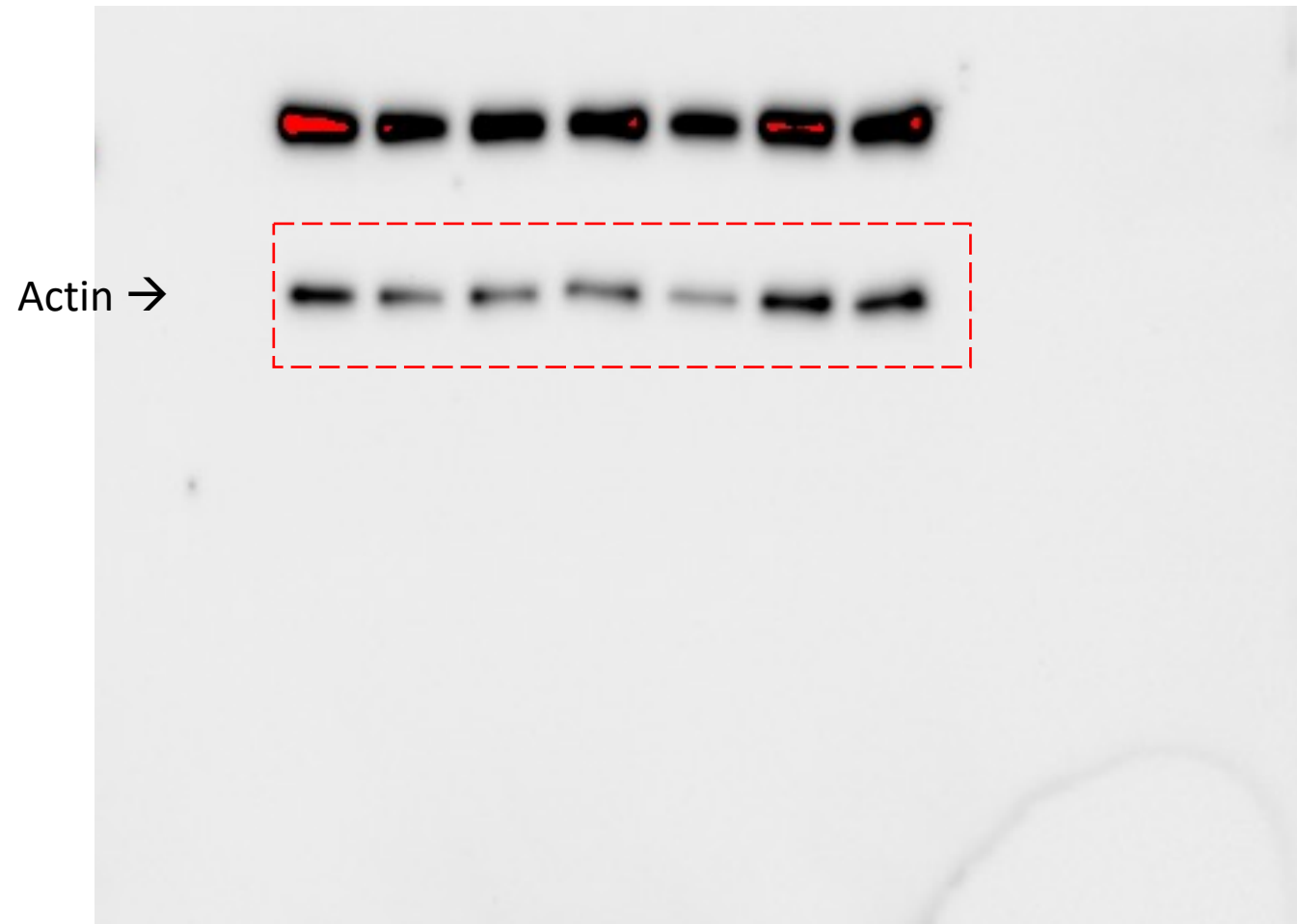


Fig. 3E raw data for Western blot using anti-I-CaD antibody (exp 1/3)



Fig. 3E raw data for Western blot using anti-actin antibody (exp 1/3)



Fig. 3E raw data for Western blot using anti-I-CaD antibody (exp 2/3)



Fig. 3E raw data for Western blot using anti-actin antibody (exp 2/3)



Fig. 3E raw data for Western blot using anti-I-CaD antibody (exp 3/3)

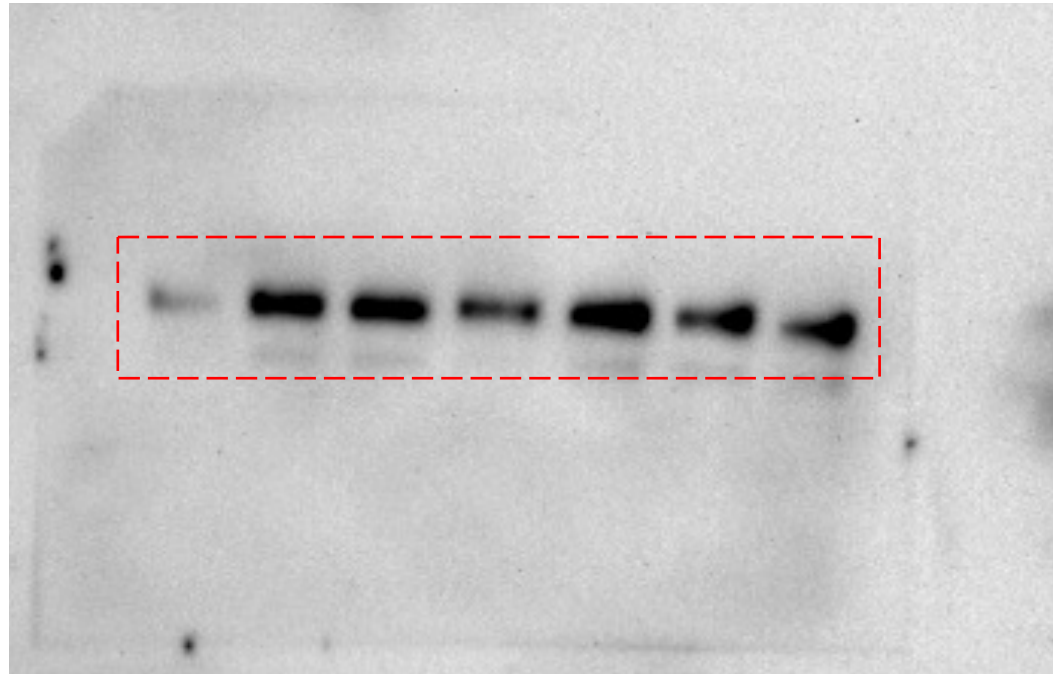


Fig. 3E raw data for Western blot using anti-actin antibody (exp 3/3)

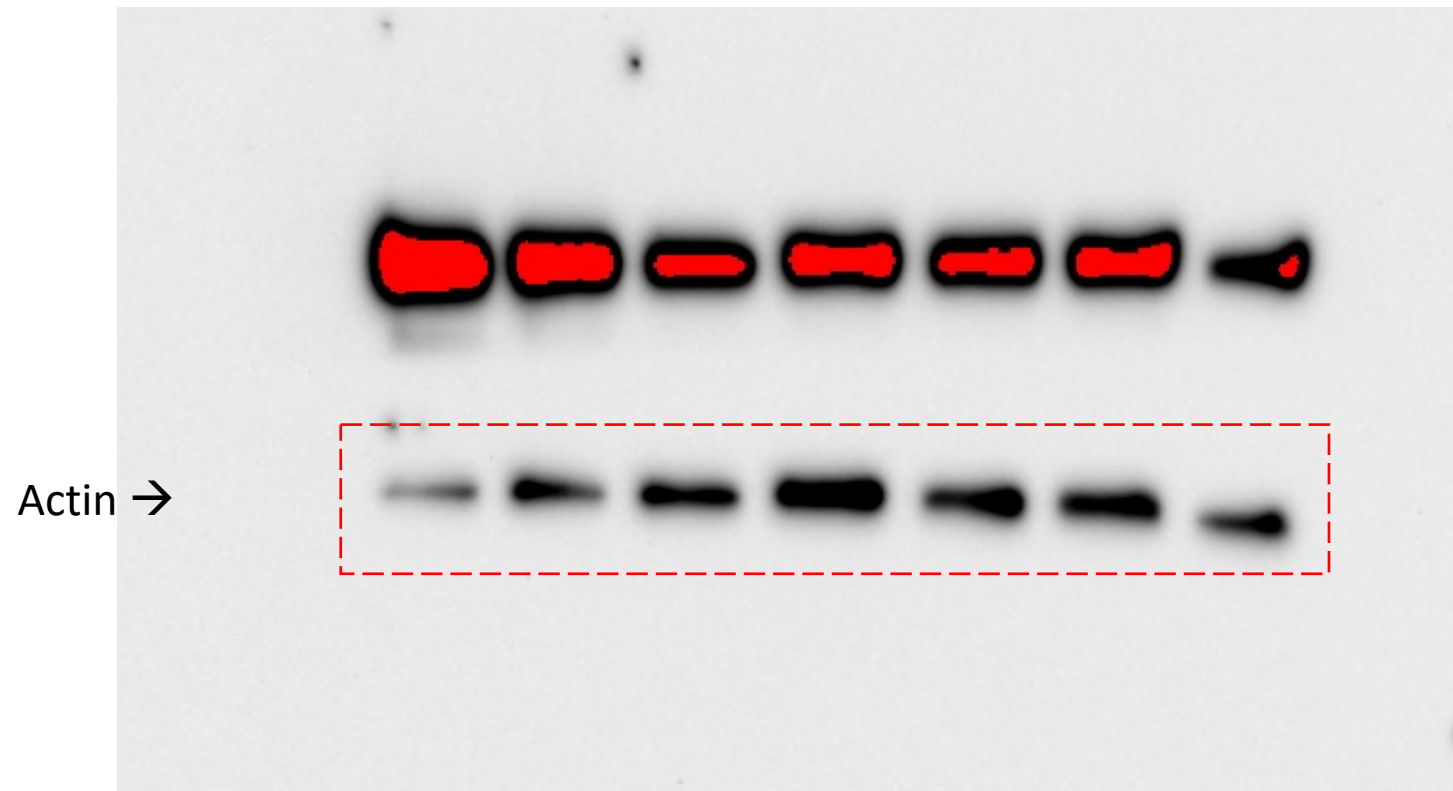
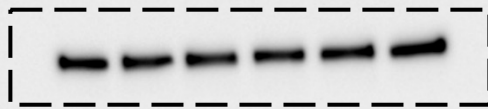


Fig. 3F raw data for Western blot using anti-I-CaD antibody (exp 1/3)

DU145 exp. 1; Caldesmon



Note the orientation: **0**, 0.05, **0.1**, 0.5, **1**, **10** μM



Fig. 3F raw data for Western blot using anti-actin antibody (exp 1/3)

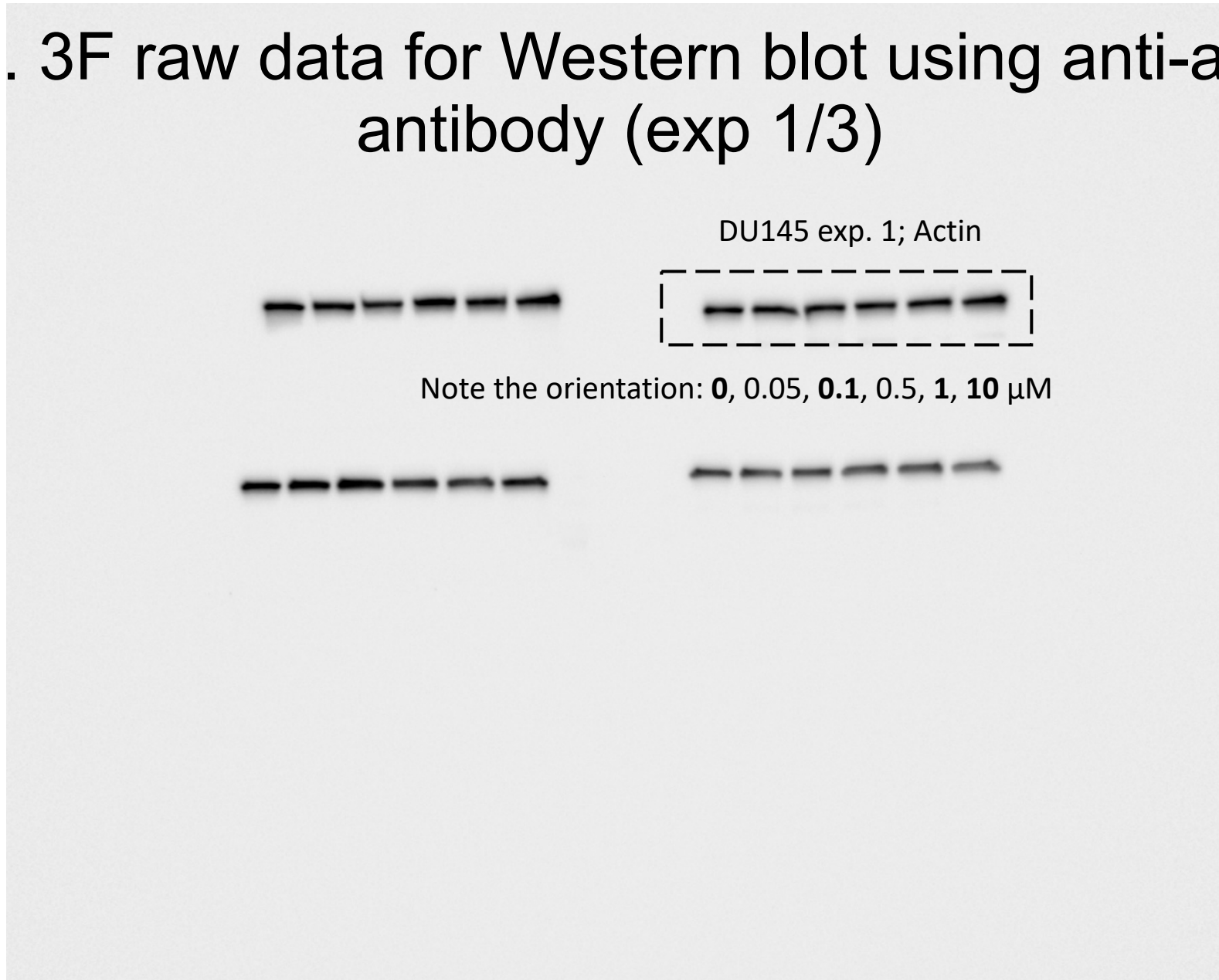
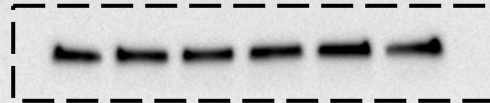


Fig. 3F raw data for Western blot using anti-I-CaD antibody (exp 2/3)

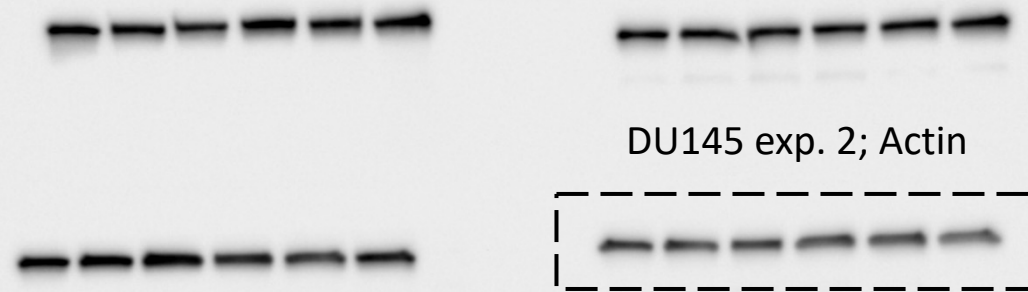


DU145 exp. 2; Caldesmon



Note the orientation: **0**, 0.05, **0.1**, 0.5, **1**, **10** μ M

Fig. 3F raw data for Western blot using anti-actin antibody (exp 2/3)



Note the orientation: **0**, 0.05, **0.1**, 0.5, **1**, **10** μM

Fig. 3F raw data for Western blot using anti-I-CaD antibody (exp 3/3)

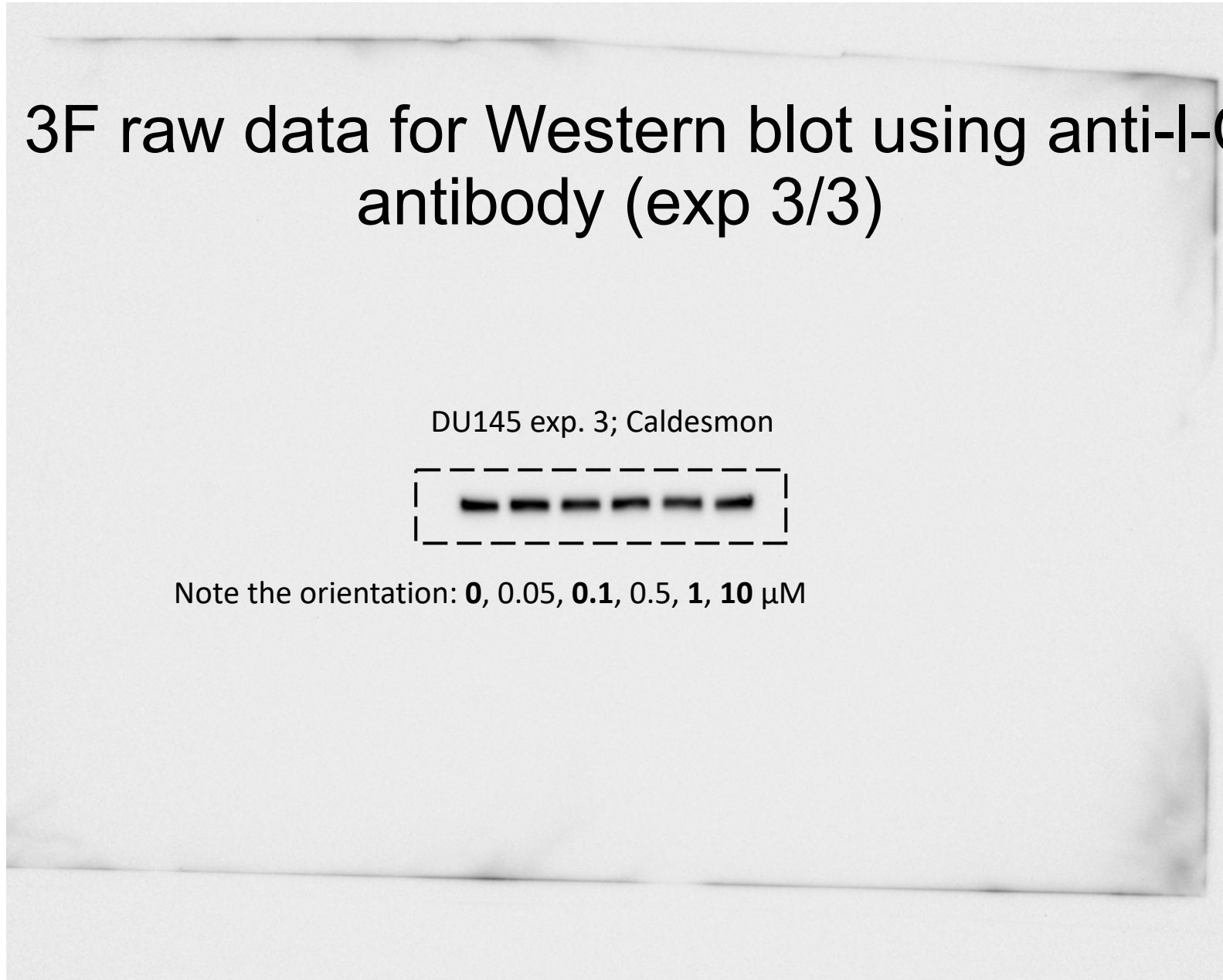
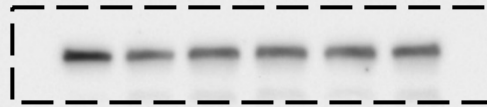


Fig. 3F raw data for Western blot using anti-actin antibody (exp 3/3)

DU145 exp. 3; Actin



Note the orientation: **0**, 0.05, **0.1**, 0.5, **1**, **10** μM

Fig. 5A raw data for Western blot using anti-I-CaD antibody (exps 1/3)

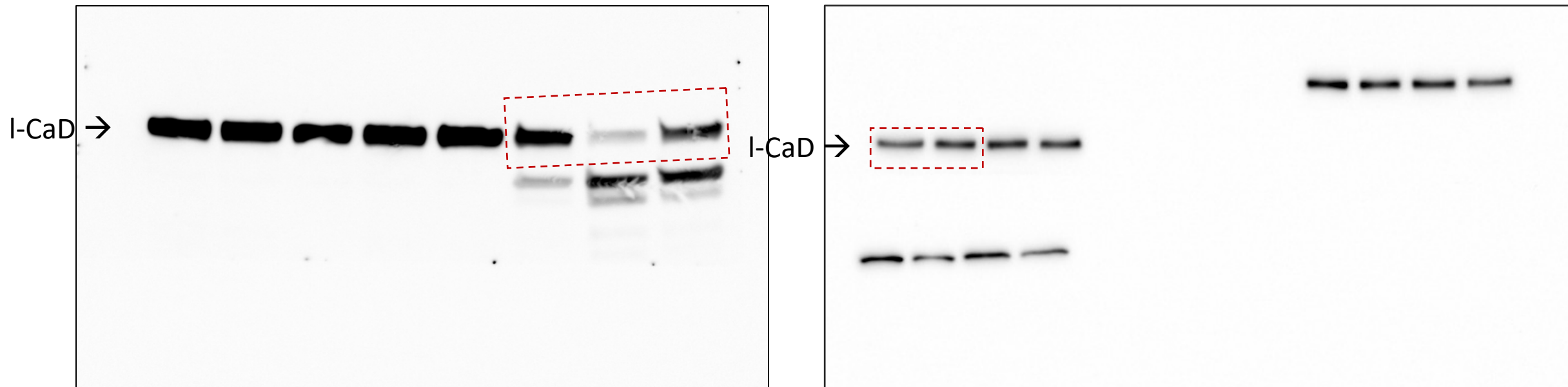


Fig. 5A raw data for Western blot using anti-actin antibody (exps 1/3)

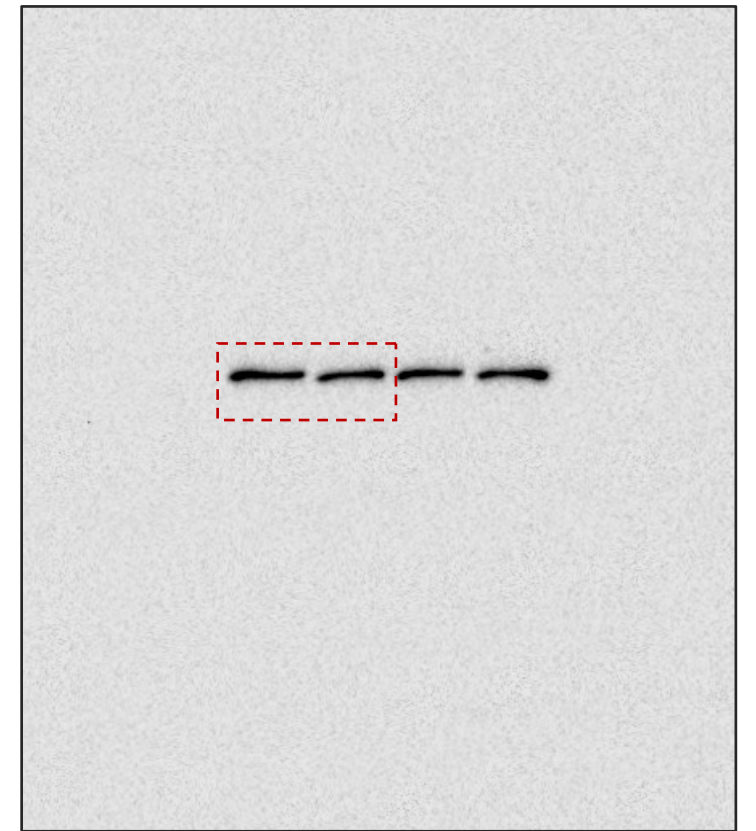
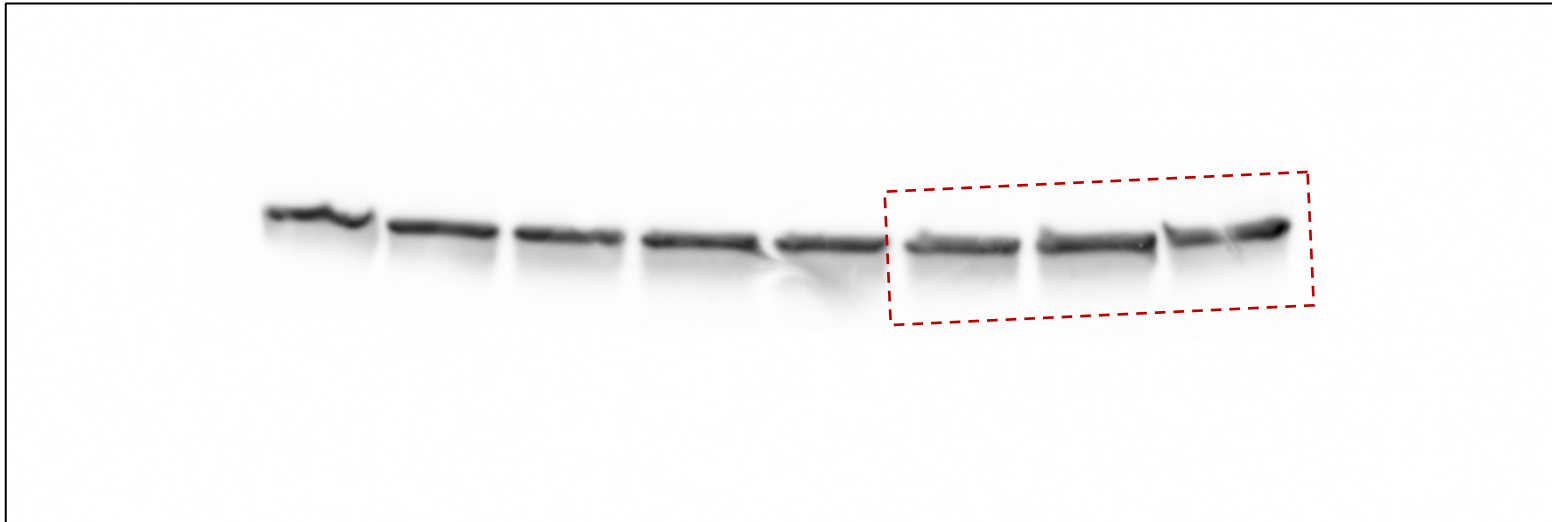


Fig. 5A raw data for Western blot using anti-I-CaD antibody (exps 2/3)

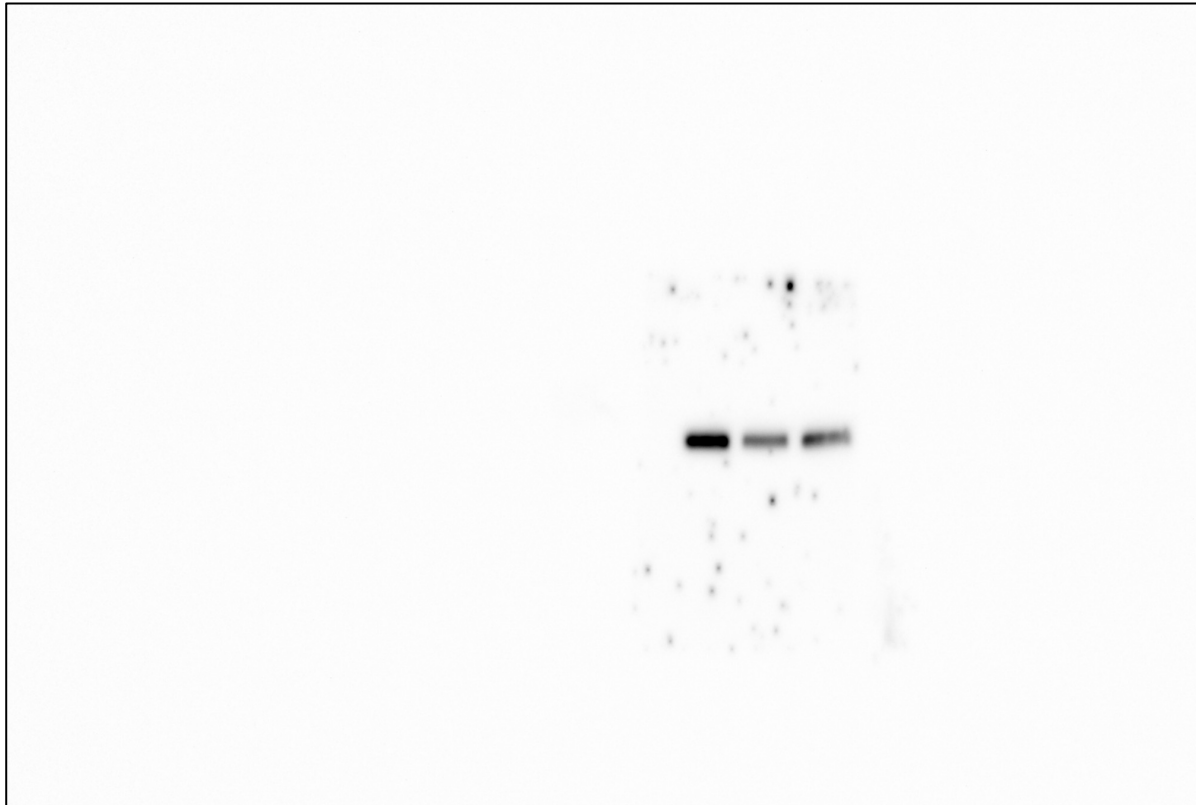


Fig. 5A raw data for Western blot using anti-actin antibody (exps 2/3)

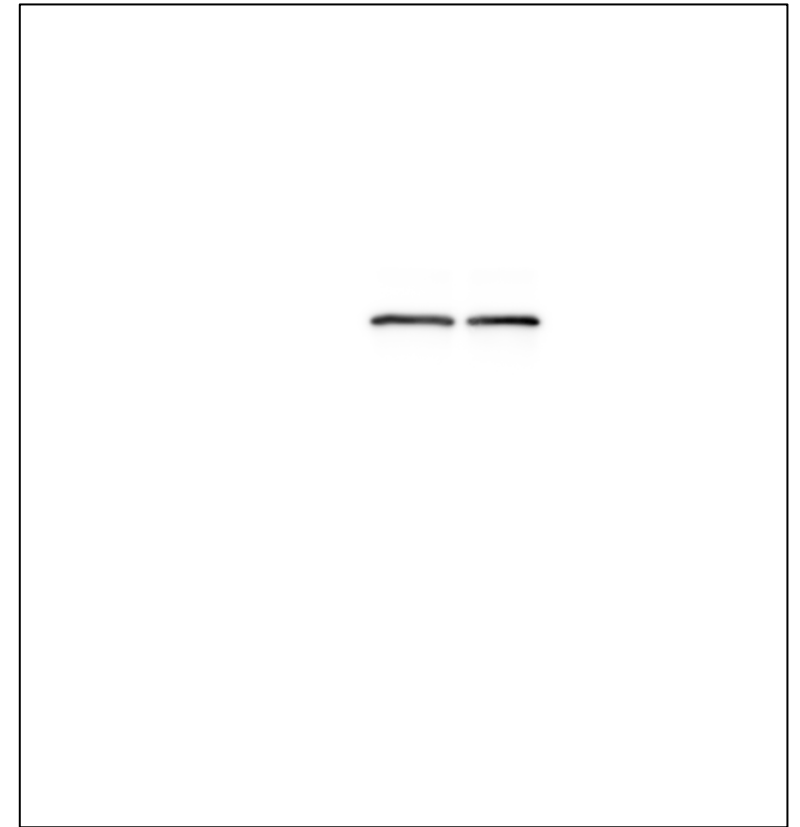


Fig. 5A raw data for Western blot using anti-I-CaD antibody (exps 3/3)



Fig. 5A raw data for Western blot using anti-actin antibody (exps 3/3)

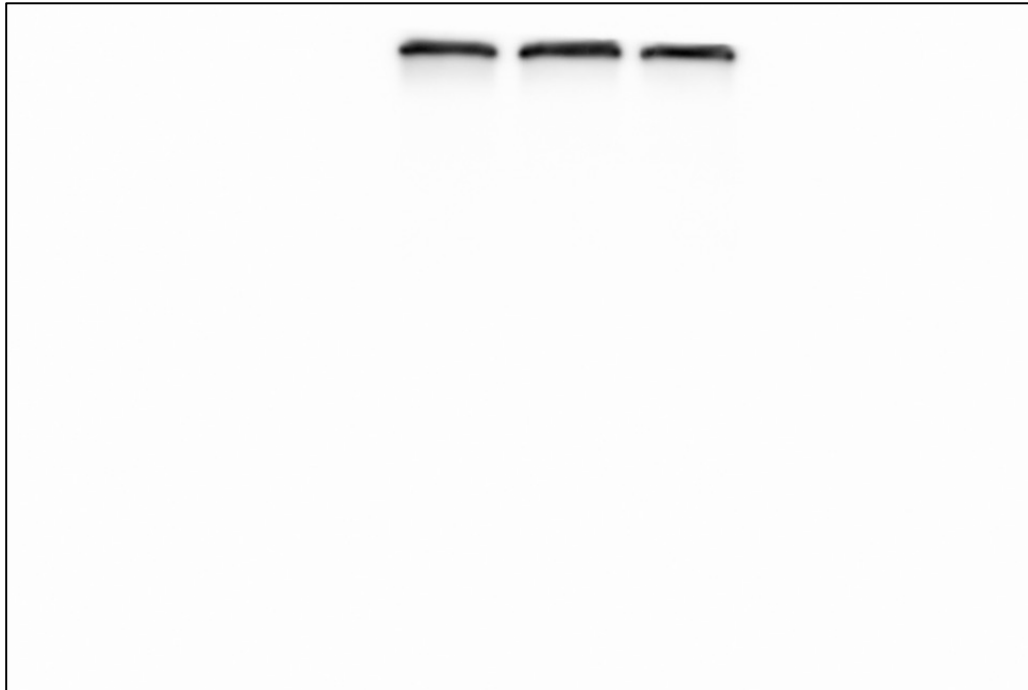


Fig. 5G raw data for Western blot using anti-GR antibody

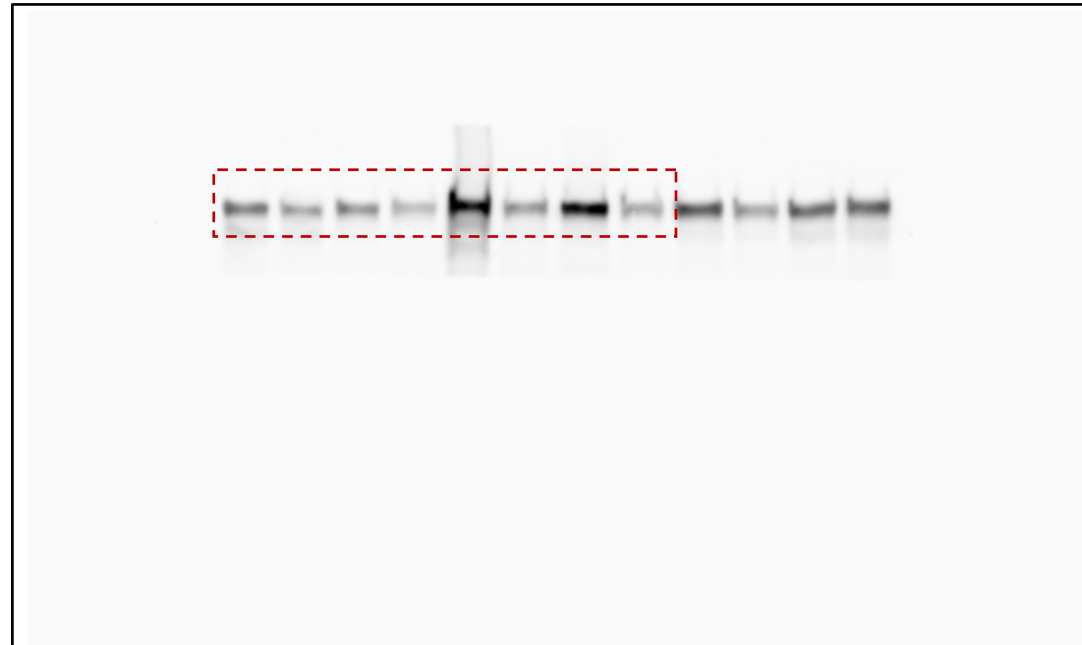


Fig. 5G raw data for Western blot using anti-I-CaD antibody

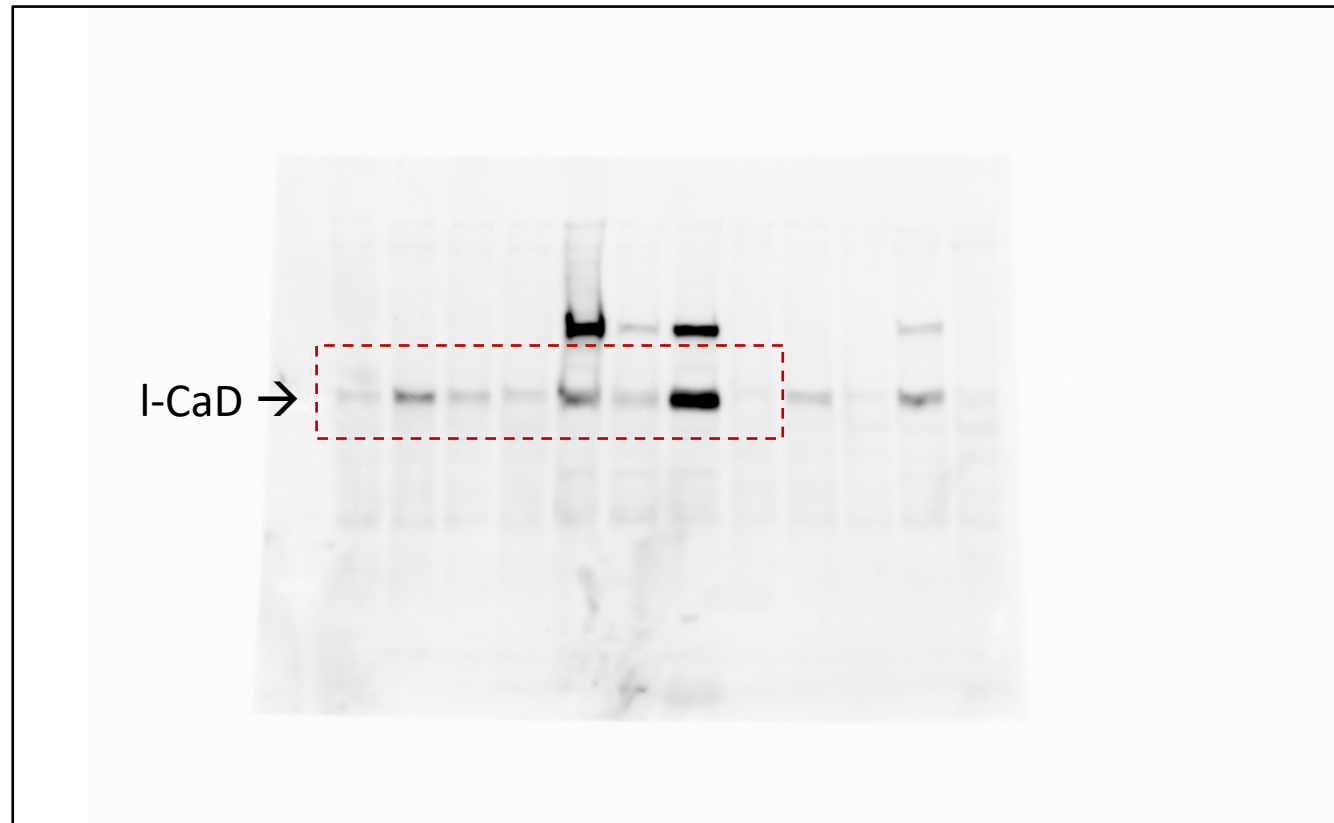


Fig. 5G raw data for Western blot using anti-actin antibody

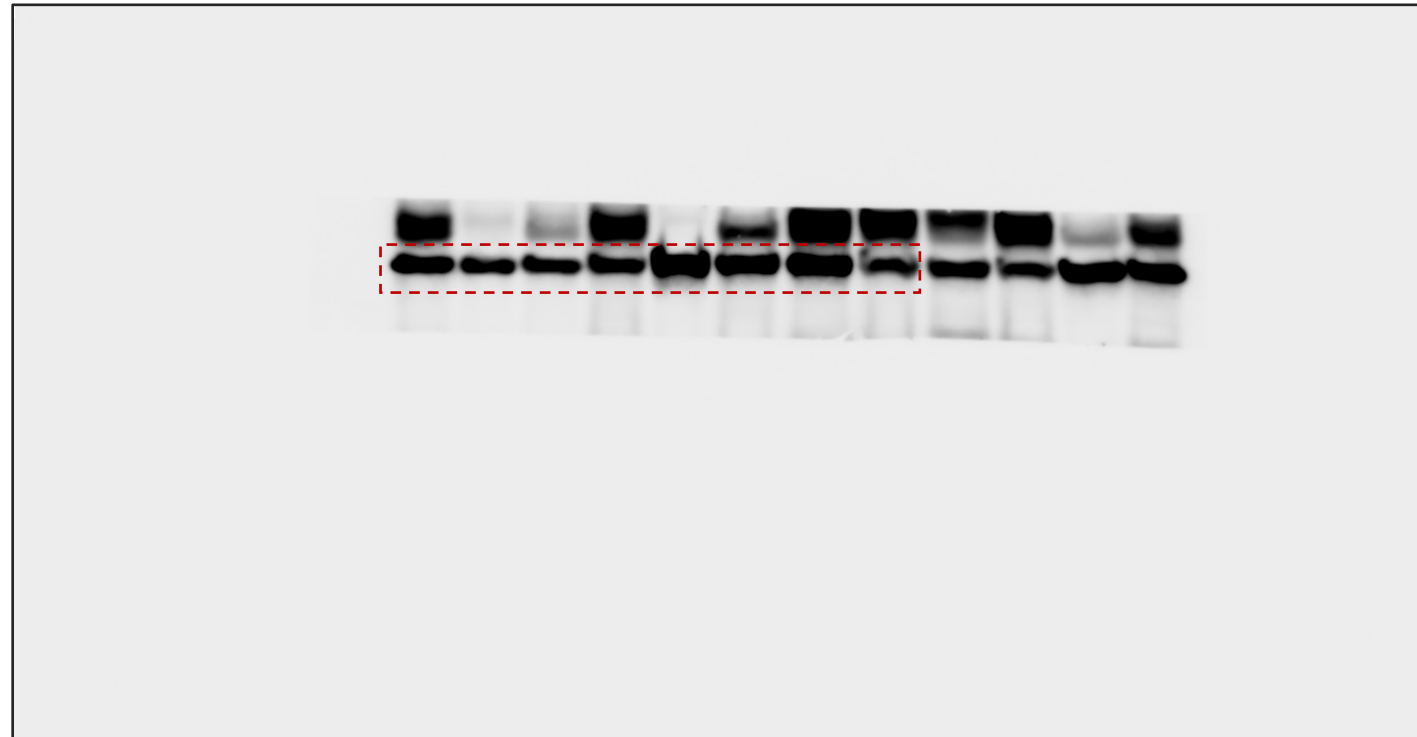


Fig. S4B raw data for Western blot using anti-I-CaD antibody

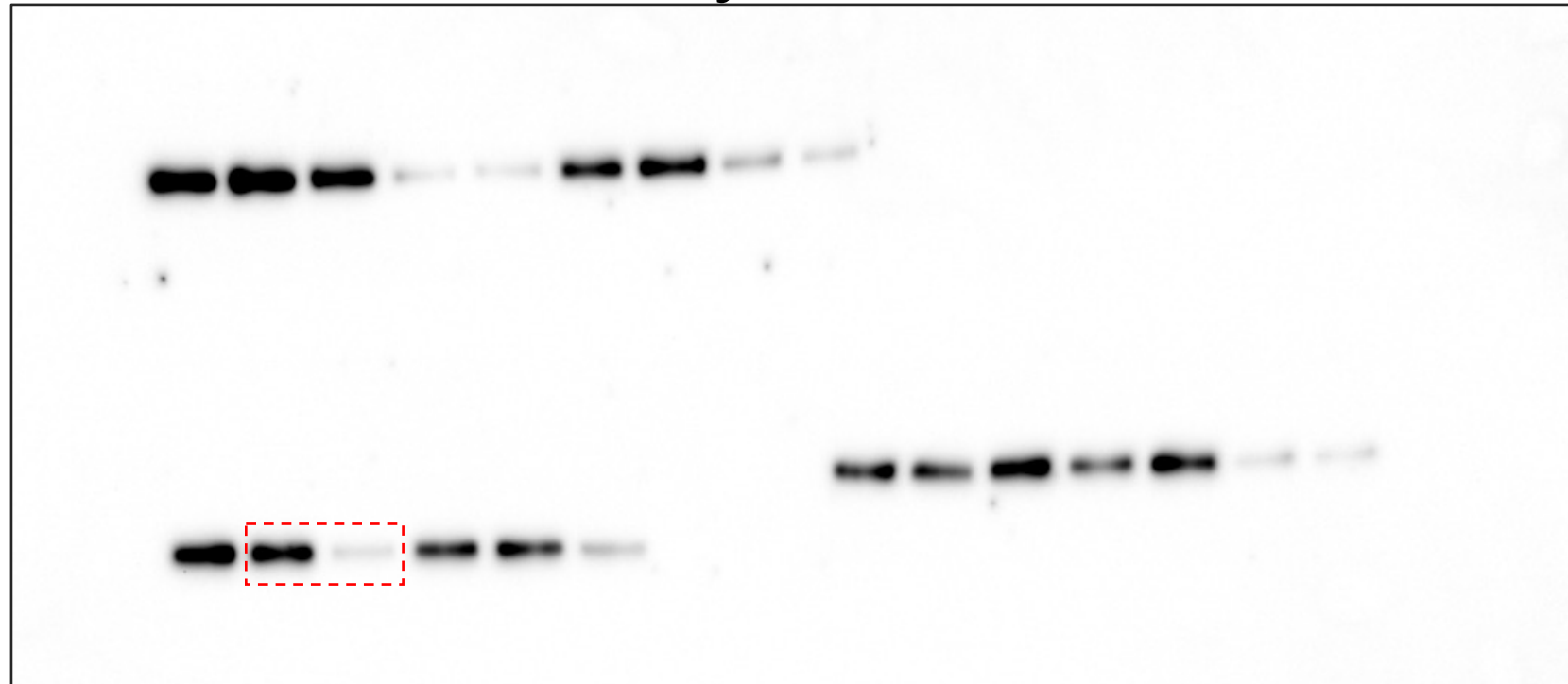


Fig. S4B raw data for Western blot using anti-vinculin antibody

