

Figure S1. The PPI network of ATP6V1F constructed using the STRING database.

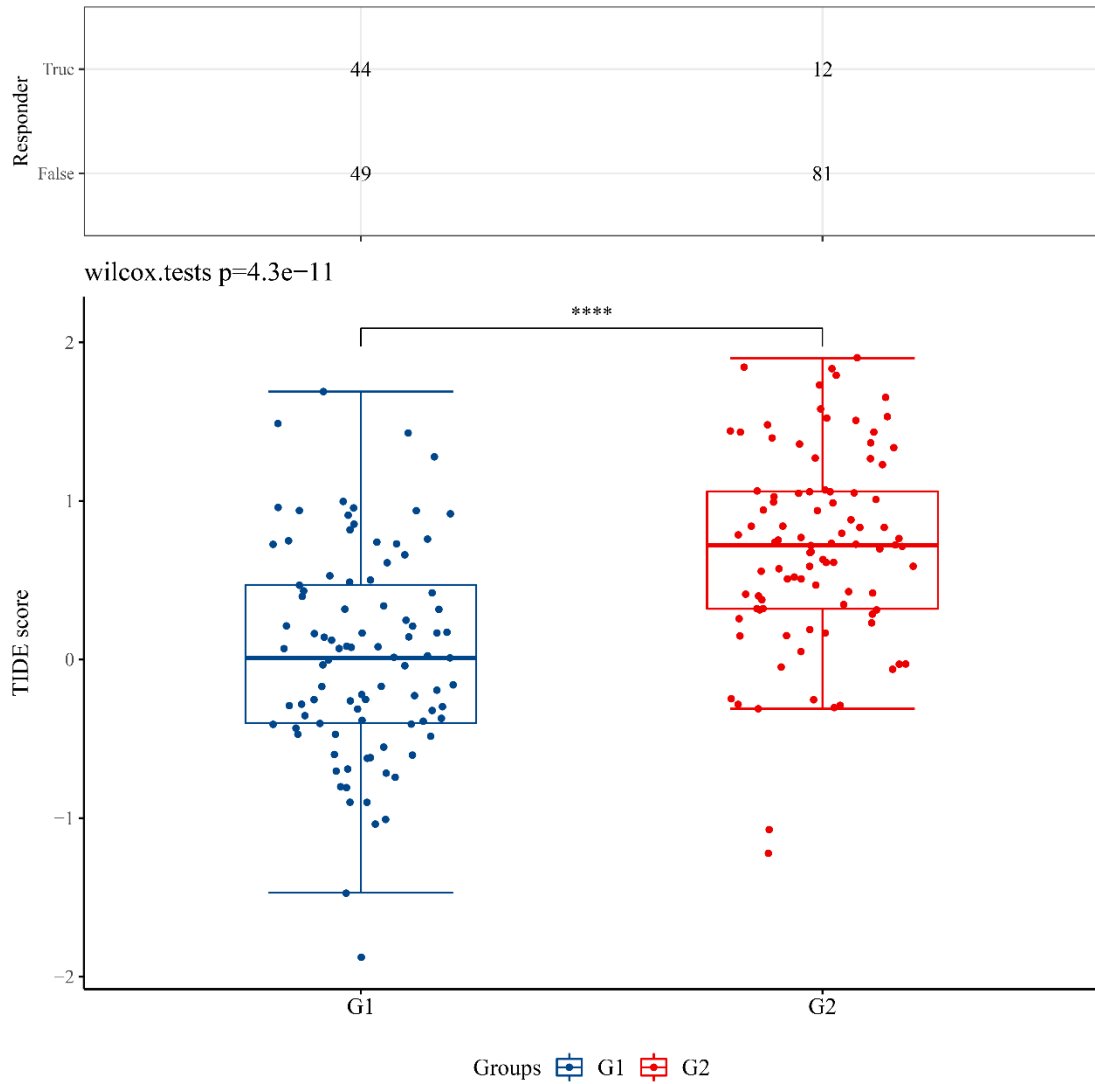


Figure S2. TIDE scores in ATP6V1F-low and ATP6V1F-high groups in HCC. Set the top ¼ as high expression group and the bottom ¼ as low expression group. ****P < 0.0001. G1: low expression group, G2: high expression group.

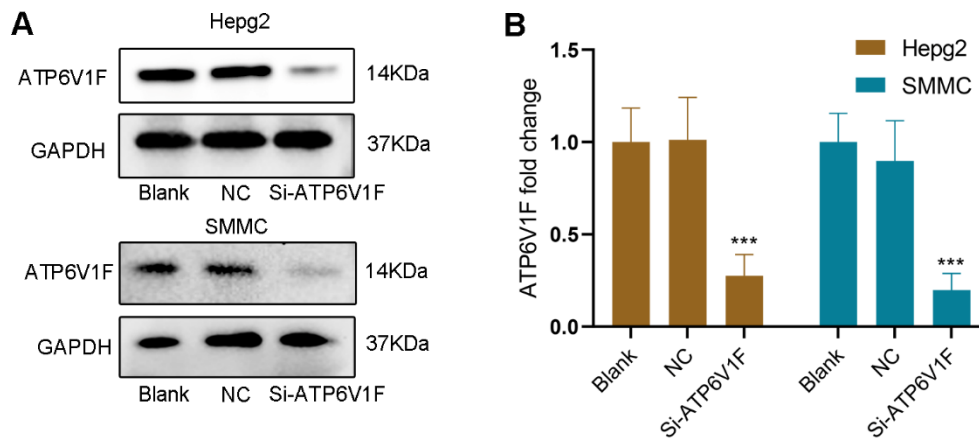
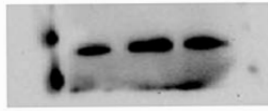
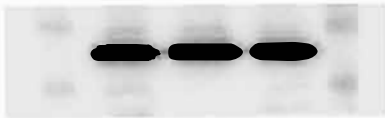
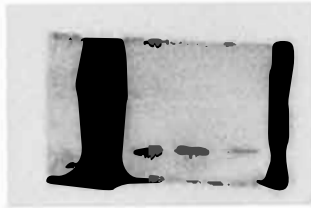


Figure S3. Western blot assays verified that ATP6V1F protein expression was successfully knocked down by si-ATP6V1F in Hepg2 and SMMC7721 cells (A). Statistical results of western blot assays (B). ***P < 0.001.



Original images of western blot assays