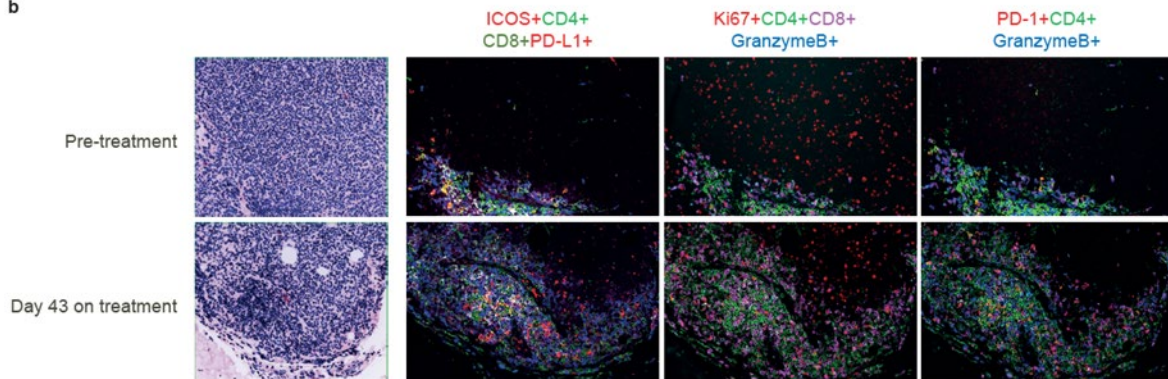


a

Monotherapy case study	
Disease/stage	<ul style="list-style-type: none">• Stage IIIc nodular melanoma• BRAF/c-KIT mutation negative
Prior treatment	<ul style="list-style-type: none">• Ipilimumab/nivolumab ~ 2 months• Nivolumab ~1 year
Study treatment	Feladilimab 1 mg/kg and 3 mg/kg for 48 weeks
Response	Partial response followed by stable disease

b



Supplementary Fig. 11. Clinical case study of feladilimab monotherapy. (a) Clinical history, treatment details, and response for a patient with melanoma who received feladilimab monotherapy and (b) corresponding tumor pharmacodynamic data. See **Supplementary Fig. 12a** for CT imaging of tumor lesions for this patient.