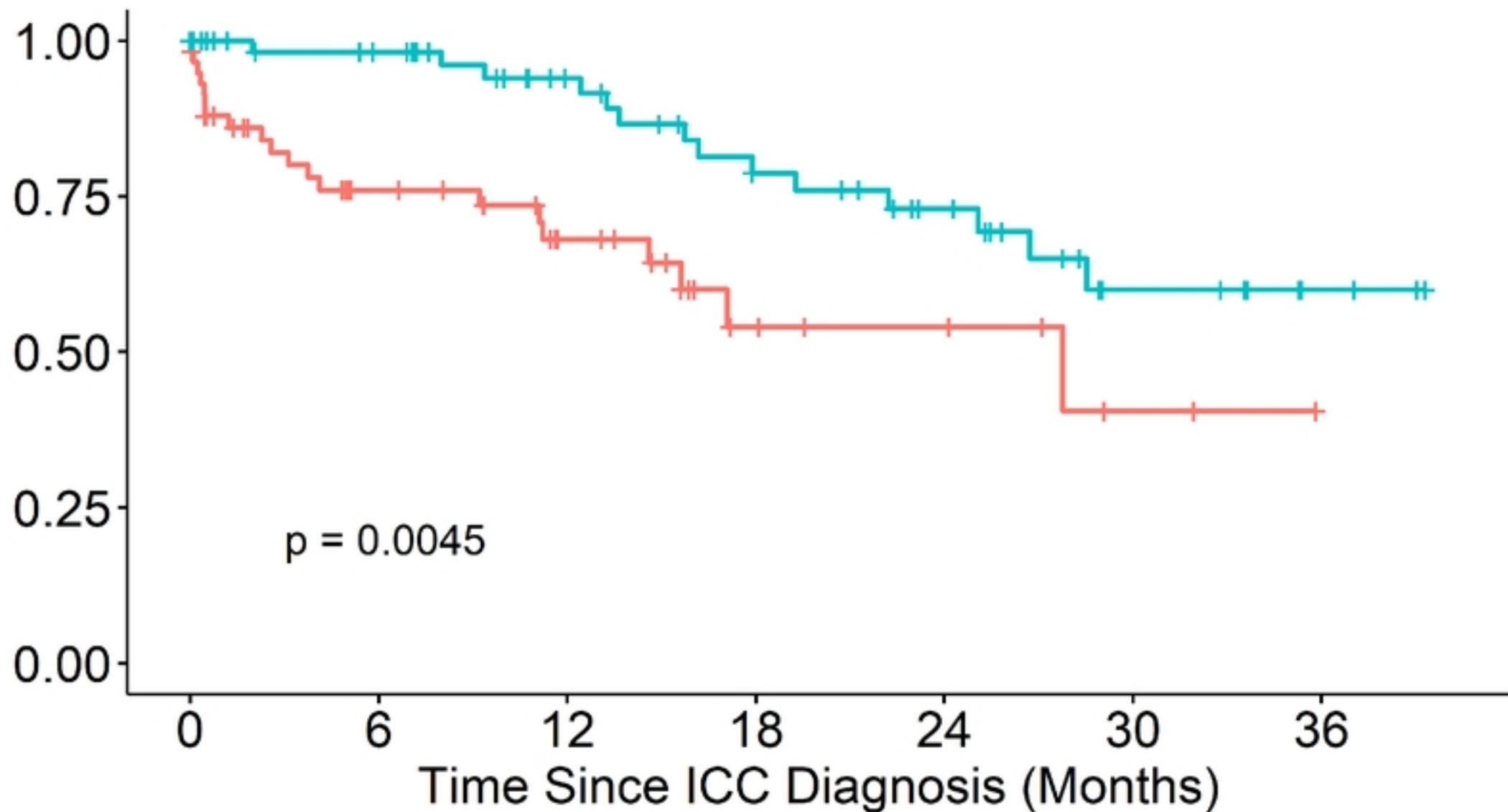


**Supplementary file:** Scanned histopathologic images of cervical cancer with tumor grading

Overall Survival

Advanced Not advanced



p = 0.0045

Number at risk (number of events)

	0	6	12	18	24	30	36
Advanced	79 (0)	33 (13)	21 (16)	8 (19)	6 (19)	2 (20)	0 (20)
Not advanced	68 (0)	52 (1)	39 (3)	29 (9)	21 (11)	9 (14)	3 (14)

Figure