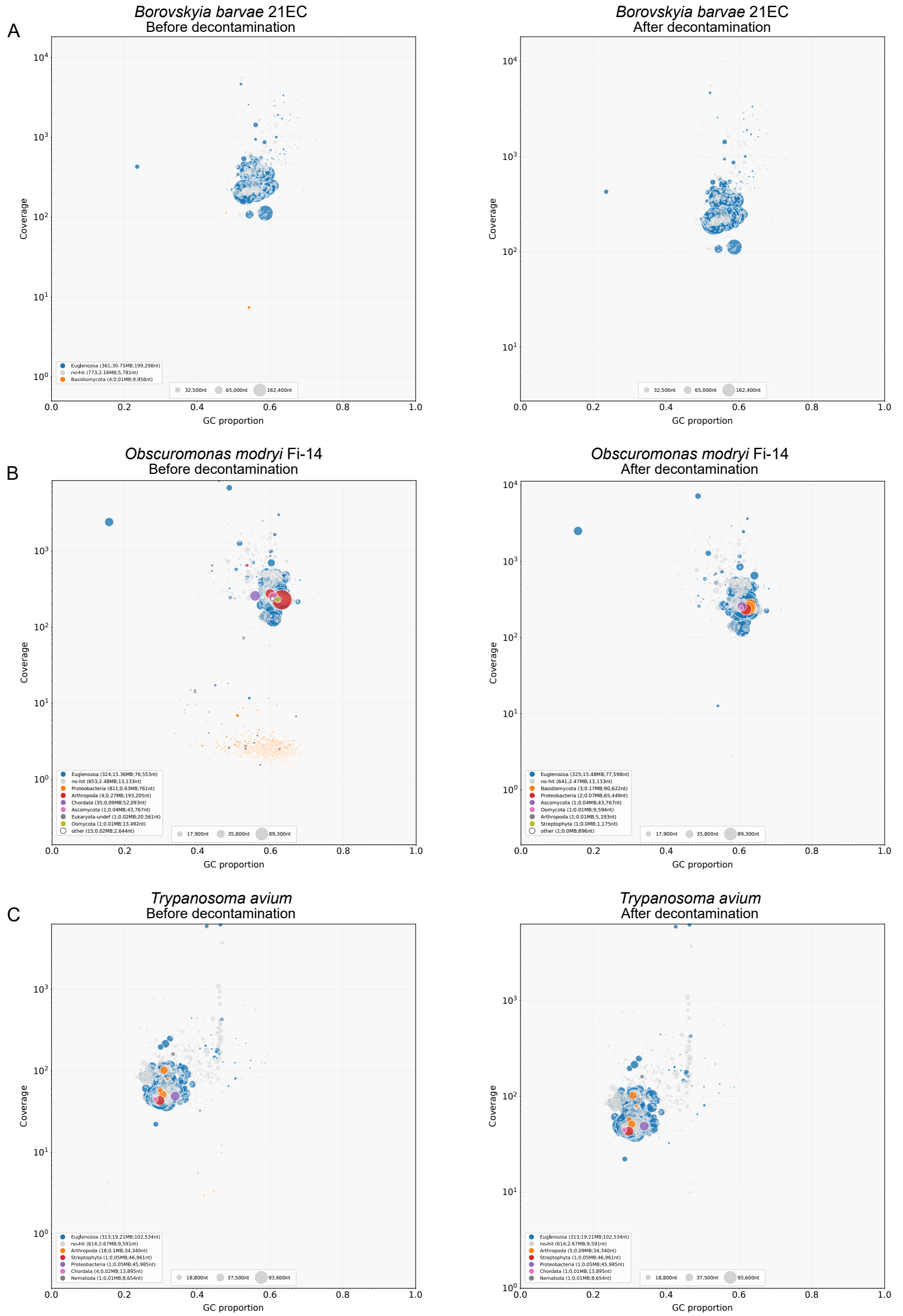
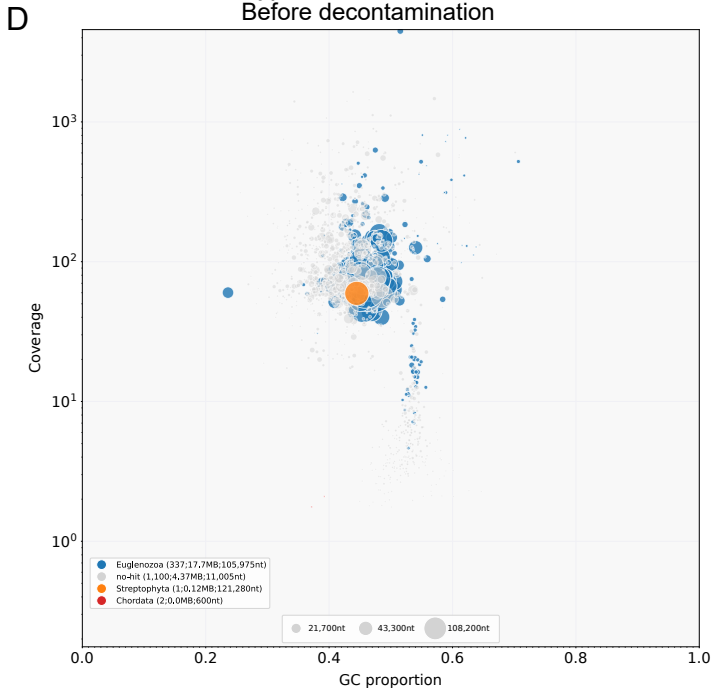


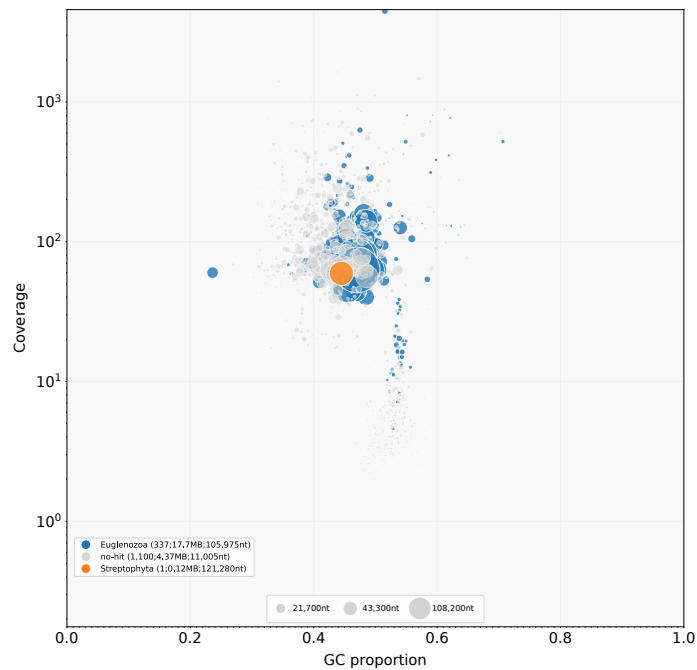
Additional file 2. Blobplots showing the state of genome assemblies before and after decontamination for the following species: *Borovskiyia barvae* (panel A), *Obscuromonas modryi* (B), *Trypanosoma avium* (C), *Trypanosoma boissoni* (D), *Trypanosoma mega* (E), *Trypanosoma platydictyli* (F), and *Trypanosoma scelopori* (G).



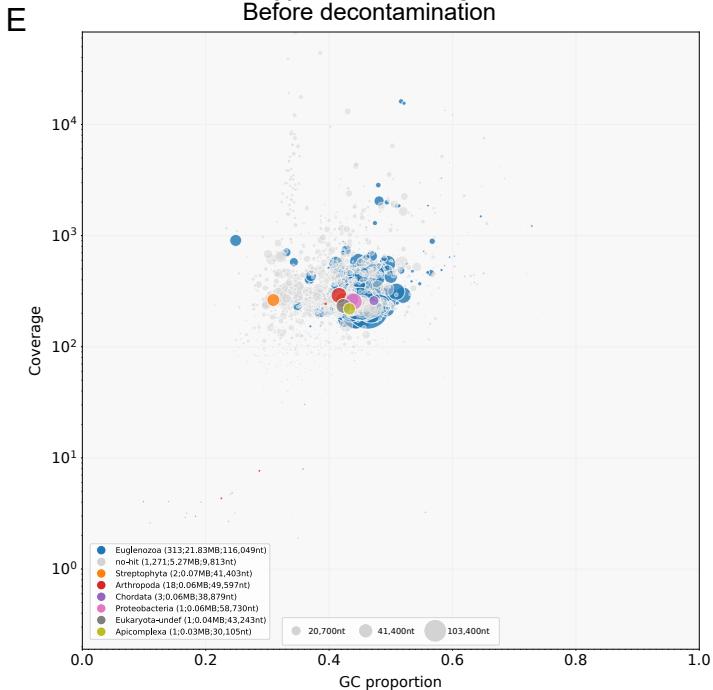
Trypanosoma boissoni
Before decontamination



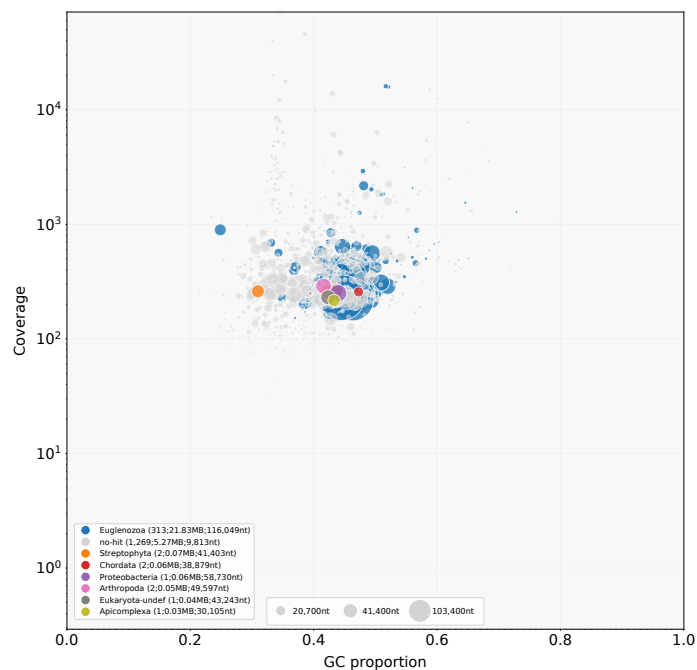
Trypanosoma boissoni
After decontamination



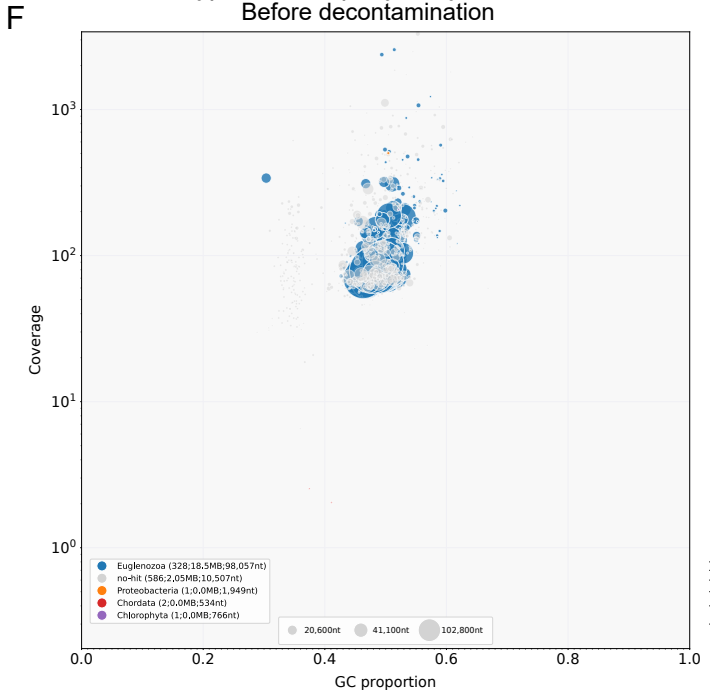
Trypanosoma mega
Before decontamination



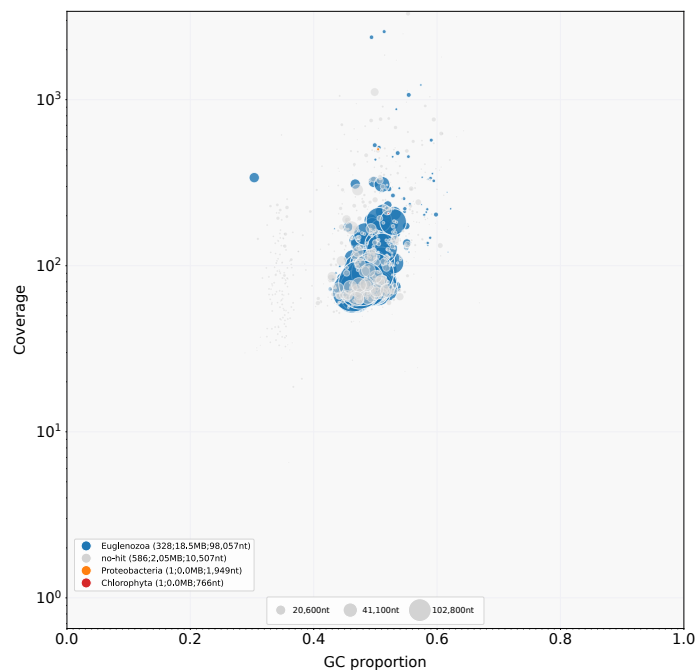
Trypanosoma mega
After decontamination

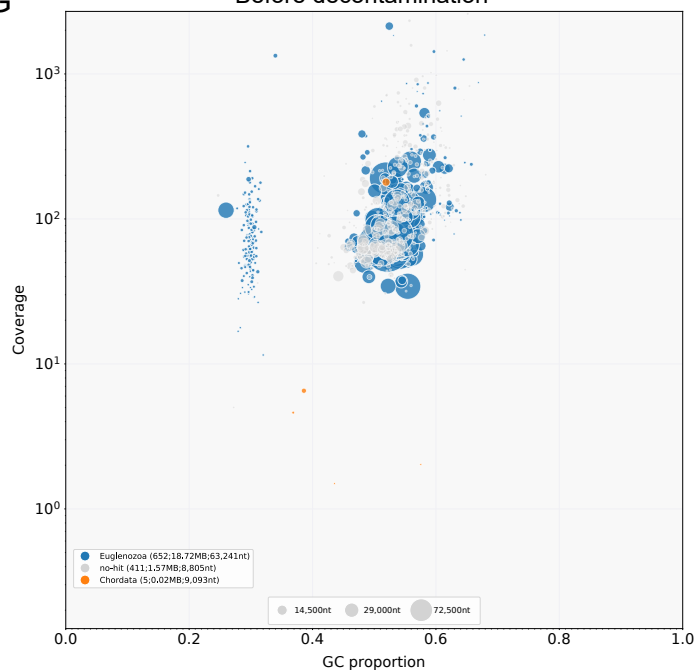


Trypanosoma platydictyli RI-340
Before decontamination



Trypanosoma platydictyli RI-340
After decontamination



G*Trypanosoma scelopori*
Before decontamination*Trypanosoma scelopori*
After decontamination