

Figure S1

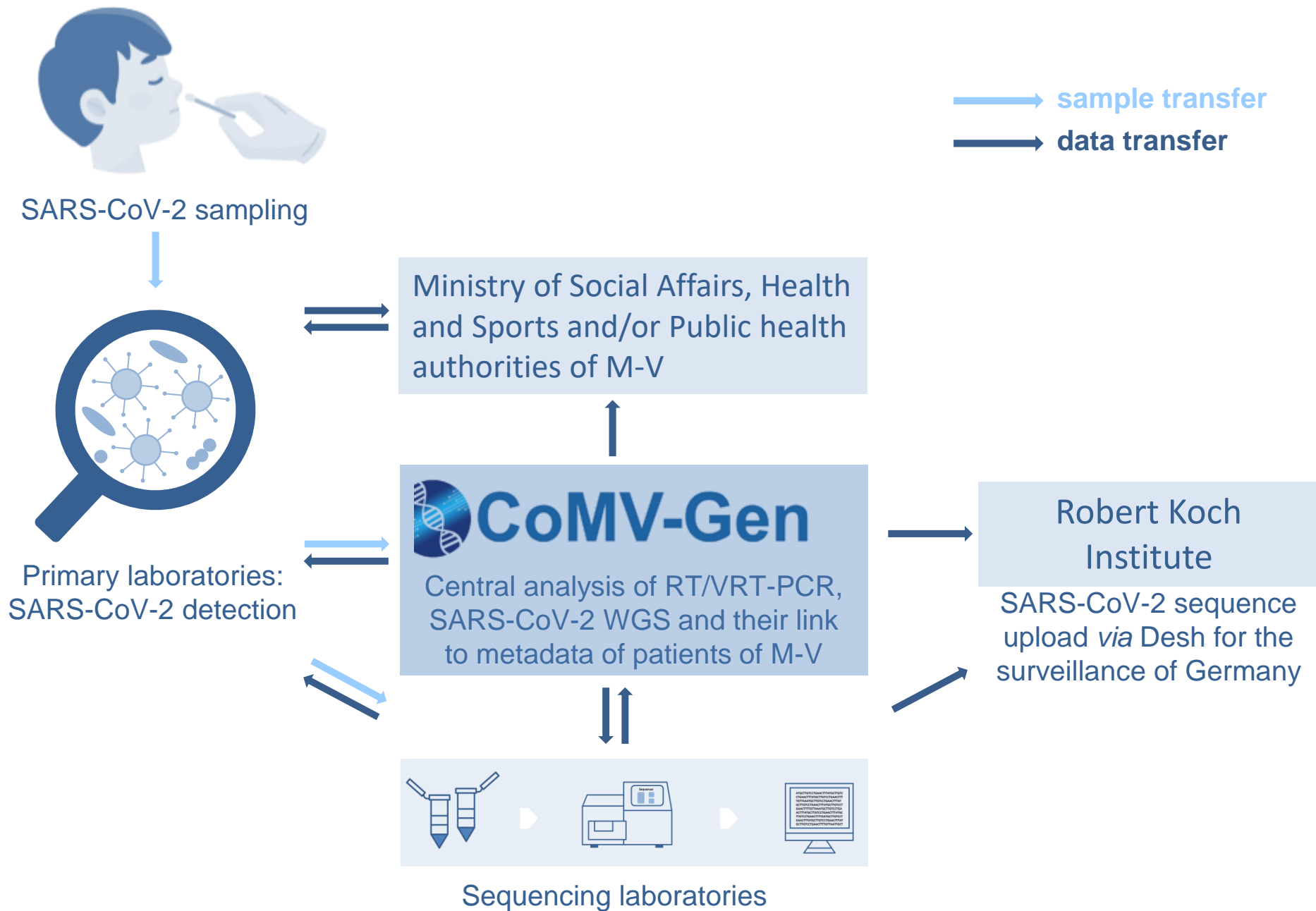


Figure S1. Schematic structure of the CoMV-Gen project. The CoMV-Gen project was founded in January 2021 at the University Medicine Greifswald connecting 13 collaborating laboratories and all local public health authorities of M-V. RNA samples were drawn throughout M-V and SARS-CoV-2 diagnostic was done by primary laboratories using RT/VRT-PCR. About 10% of all positive samples were sent to sequencing laboratories and the SARS-CoV-2 lineage was determined. All PCR data and sequencing results as well as metadata were transferred to the CoMV-Gen study group center, analysed bioinformatically and published as weekly reports in the public domain and made available to the health service and government of M-V. In addition, quality-checked SARS-CoV-2 sequences were uploaded to the RKI via Dersh and the health authorities of M-V were informed about the identified virus lineages.