

Supplementary Information

Persistent symptoms after COVID-19 are not associated
with differential SARS-CoV-2 antibody or T cell immunity

Daniel M. Altmann^{1*}, Catherine J Reynolds², George Joy^{3,4}, Ashley D. Otter⁵, Joseph M. Gibbons⁶, Corinna Pade⁶, Leo Swadling⁷, Mala K. Maini⁷, Tim Brooks⁵, Amanda Semper⁵, Áine McKnight⁶, Mahdad Noursadeghi⁷, Charlotte Manisty^{3,4}, Thomas A Treibel^{3,4}, James C Moon^{3,4}, COVIDsortium investigators[§], Rosemary J Boyton^{2,8*}

¹Department of Immunology and Inflammation, Imperial College London, London, UK

²Department of Infectious Disease, Imperial College London, London, UK

³St Bartholomew's Hospital, Barts Health NHS Trust, London, UK

⁴Institute of Cardiovascular Science, University College London, UK

⁵UK Health Security Agency, Porton Down, UK

⁶Blizard Institute, Barts and the London School of Medicine and Dentistry, Queen Mary University of London, London, UK

⁷Division of Infection and Immunity, University College London, London, UK

⁸Lung Division, Royal Brompton and Harefield Hospitals, Guy's and St Thomas' NHS Foundation Trust, London, UK

*Corresponding authors

Prof. Rosemary Boyton, PhD, FRCP, FHEA

Prof. Daniel Altmann, PhD

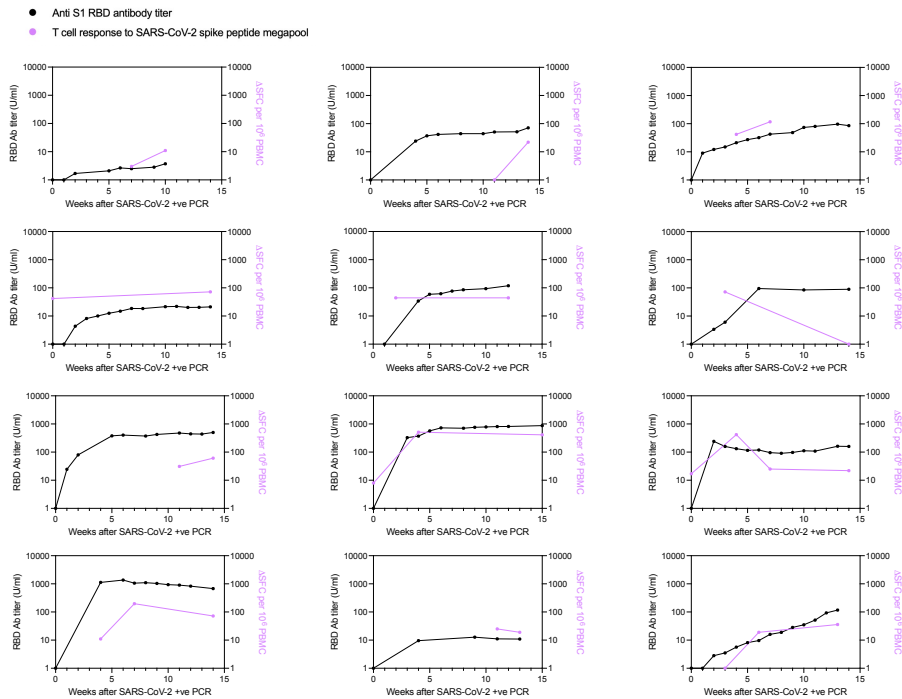
Faculty of Medicine, Hammersmith Hospital Campus

Imperial College London, Du Cane Road, London W12 0NN, UK.

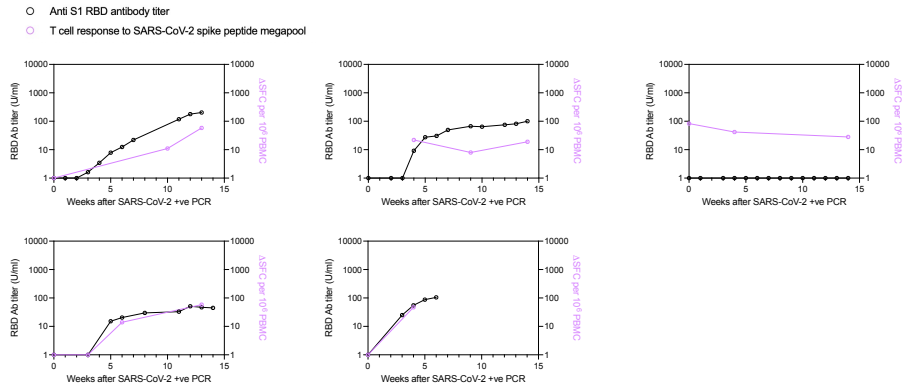
Email: r.boyton@imperial.ac.uk; d.altmann@imperial.ac.uk

Supplementary Figure 1. Longitudinal S1 RBD antibody titers (black circle) and T cell responses against spike megapool (purple circle). Longitudinal data is shown from the date of SARS-CoV2 PCR positive confirmed infection and over the following 15 week follow up for individual HCW. Source data are provided as a Source Data file. **(A)** HCW that had Recovered 12 months after infection (closed circle) and **(B)** HCW reporting Persistent symptoms at 12 months (open circle). Ab, antibody; HCW, health care worker; PBMC, peripheral blood mononuclear cells; RBD, receptor binding domain; SFC, spot forming cells; U, units.

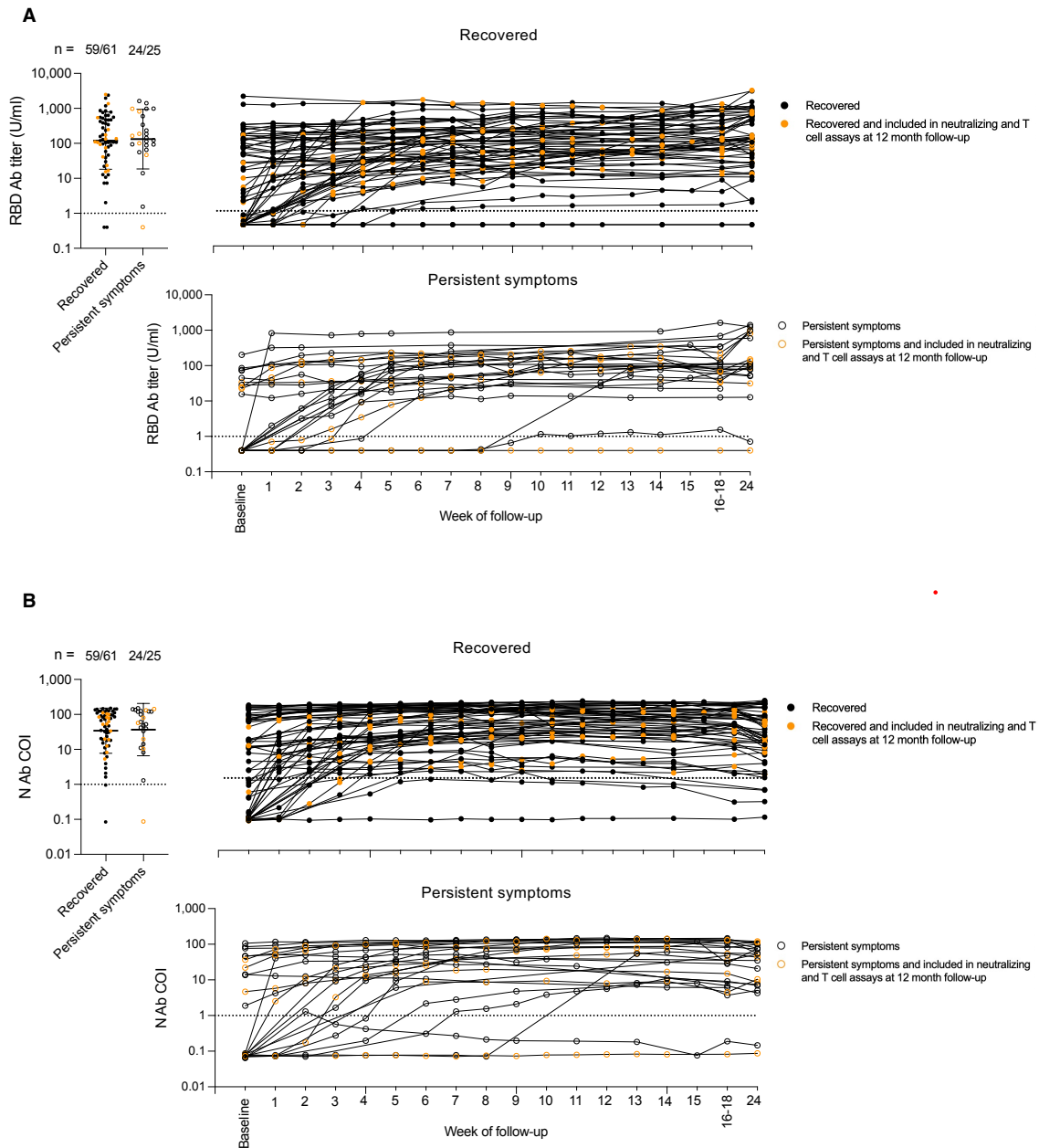
A



B

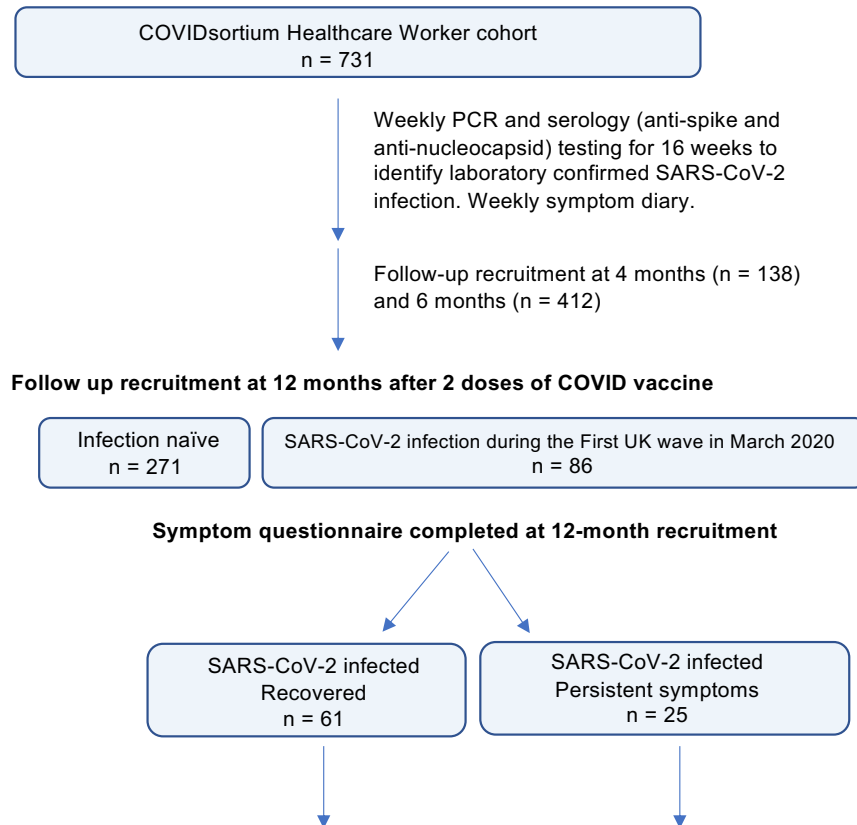


Supplementary Figure 2. Longitudinal (A) S1 RBD and (B) nucleocapsid antibody titers measured in the whole HCW cohort (n=86, 33% male: Recovered, closed circle, n = 61, 34% male; Persistent symptoms, open circle, n = 25, 28% male) are annotated to indicate HCW (Recovered, orange closed circle, n = 15, 57% male; Persistent symptoms, orange open circle, n = 7, 57% male) that were included in the neutralizing antibody and T cell assays at 12-month follow-up. Source data are provided as a Source Data file. Two-tailed Mann-Whitney U tests (Graphpad Prism version 8.0) were used to test for significant differences between recovered HCW and those reporting persistent symptoms. Error bars shown are geometric mean \pm 1 geometric SD. Ab, antibody; COI, cut-off index; HCW, health care worker; N, nucleocapsid; RBD, receptor binding domain; SD, standard deviation; U, units.



Supplementary Figure 3. CONSORT diagram for Persistent symptom and Recovered sub-study recruitment including assays performed at each timepoint

COVIDsortium cohort recruited HCW from St Bartholomew’s, Nightingale and Royal Free Hospital NHS Hospitals, London between 23rd March and 7th May 2020



Baseline to 4 months

Data analysis

	n =	n =
S1 RBD serology	61	25
Nucleocapsid serology	61	25
Pseudovirus neutralization	37	21
Protein and MEP pool T cell ELISpot	37	21
FEC peptide ELISpot	34	19
Peptide megapool T cell ELISpot	14	8

12 months

Data analysis

	n =	n =
S1 RBD serology	53	25
Nucleocapsid serology	61	25
Live virus neutralization	14	7
MEP pool T cell ELISpot	14	7

COVIDsortium Investigators:

Hakam Abbass³, Aderonke Abiodun^{3,4}, Mashael Alfarih³, Zoe Alldis³, Daniel M Altmann¹, Oliver E Amin⁷, Mervyn Andiapen³, Jessica Artico³, João B Augusto³, Georgina L Baca³, Sasha N L Bailey², Anish N Bhuvu³, Alex Boulter³, Ruth Bowles³, Rosemary J Boyton^{2,8}, Olivia V Bracken⁹, Ben O'Brien^{3,10}, Tim Brooks⁵, Natalie Bullock⁶, David K Butler², Gabriella Captur^{4,11}, Olivia Carr⁵, Benjamin M Chain⁷, Nicola Champion³, Carmen Chan³, Aneesh Chandran⁷, David Collier²⁰, Tom Coleman⁵, Jorge Couto de Sousa³, Xose Couto-Parada³, Eleanor Cross⁵, Teresa Cutino-Moguel³, Silvia D'Arcangelo⁵, Rhodri H Davies³, Brooke Douglas¹¹, Cecilia Di Genova¹⁴, Keenan Dieobi-Anene³, Mariana O Diniz⁷, Anaya Ellis⁵, Karen Feehan⁹, Malcolm Finlay³, Marianna Fontana¹¹, Nasim Forooghi³, Sasha Francis⁵, Celia Gaier⁹, Joseph M Gibbons⁶, David Gillespie³, Derek Gilroy¹⁵, Matt Hamblin³, Gabrielle Harker⁵, Georgia Hemingway⁵, Jacqueline Hewson⁵, Wendy Heywood^{16,17}, Lauren M Hickling¹⁸, Bethany Hicks⁵, Aroon D Hingorani⁷, Lee Howes⁴, Alun Hughes⁴, Gemma Hughes³, Rebecca Hughes^{3,4}, Ivie Itua³, Victor Jardim³, Wing-Yiu Jason Lee⁶, Melanie Petra Jensen³, Jessica Jones⁵, Meleri Jones⁶, George Joy^{3,4}, Vikas Kapil^{3,20}, Caoimhe Kelly⁵, Hibba Kurdi^{3,4}, Jonathan Lambourne³, Kai-Min Lin², Siyi Liu², Aaron Lloyd⁵, Sarah Louth¹¹, Mala K Maini⁷, Vineela Mandadapu³, Charlotte Manisty^{3,4}, Áine McKnight⁶, Katia Menacho³, Celina Mfuko³, Kevin Mills^{16,17}, Sebastian Millward⁵, Oliver Mitchelmore³, Christopher Moon⁵, James C Moon^{3,4}, Diana Muñoz Sandoval², Sam M Murray², Mahdad Noursadeghi⁷, Ashley Otter⁵, Corinna Pade⁶, Susana Palma³, Ruth Parker¹⁹, Kush Patel³, Mihaela Pawarova¹¹, Steffen E Petersen³, Brian Piniera³, Franziska P Pieper², Daniel Pope^{3,20}, Mary Prossora³, Lisa Rannigan¹¹, Alicja Rapala⁴, Catherine J Reynolds², Amy Richards³, Matthew Robathan²⁰, Joshua Rosenheim⁷, Cathy Rowe⁵, Matthew Royds⁵, Jane Sackville West²¹, Genine Sambile³, Nathalie M. Schmidt⁷, Hannah Selman⁵, Amanda Semper⁵, Andreas Seraphim³, Mihaela Simion¹¹, Angelique Smit¹¹, Michelle Sugimoto⁹, Leo Swadling⁷, Stephen Taylor⁵, Nigel Temperton¹⁴, Stephen Thomas⁵, George D Thornton^{3,4}, Thomas A Treibel^{3,4}, Art Tucker³, Ana M Valdes^{22,23}, Ann Varghese⁵, Jessry Veerapen³, Mohit Vijayakumar³, Sophie Welch³, Hannah White⁵, Theresa Wodehouse³, Lucinda Wynne³, and Dan Zahedi¹⁹

¹Department of Immunology and Inflammation, Imperial College London, London, UK

²Department of Infectious Disease, Imperial College London, London, UK

³St Bartholomew's Hospital, Barts Health NHS Trust, London, UK

⁴Institute of Cardiovascular Science, University College London, UK

⁵UK Health Security Agency, Porton Down, UK

⁶Blizard Institute, Barts and the London School of Medicine and Dentistry, Queen Mary University of London, London, UK

⁷Division of Infection and Immunity, University College London, London, UK

⁸Lung Division, Royal Brompton and Harefield Hospitals, Guy's and St Thomas' NHS Foundation Trust, London, UK

⁹Division of Medicine, University College London, London, UK

¹⁰German Heart Centre and Charité University, Berlin, Germany

¹¹Royal Free London NHS Foundation Trust, London, UK

¹⁴Viral Pseudotype Unit, Medway School of Pharmacy, Chatham Maritime, Kent, UK

¹⁵Centre for Clinical Pharmacology, University College London, London, UK

¹⁶Translational Mass Spectrometry Research Group, Genetics & Genomic Medicine, UCL Institute of Child Health, London, UK

¹⁷Great Ormond Street Biomedical Research Centre, UCL Institute of Child Health, London, UK

¹⁸East London NHS Foundation Trust Unit for Social and Community Psychiatry, Newham Centre for Mental Health, London, UK

¹⁹School of Clinical Medicine, University of Cambridge, Cambridge, UK

²⁰William Harvey Research Institute, Queen Mary University of London, London, UK

²¹James Wigg Practice, Kentish Town, London, UK

²²Academic Rheumatology, Clinical Sciences, Nottingham City Hospital, Nottingham, UK

²³NIHR Nottingham Biomedical Research Centre, Nottingham University Hospitals NHS Trust and University of Nottingham, Nottingham, UK

[Professor James C Moon is the UK COVIDsortium Investigators representative:

email: james.moon1@nhs.net]