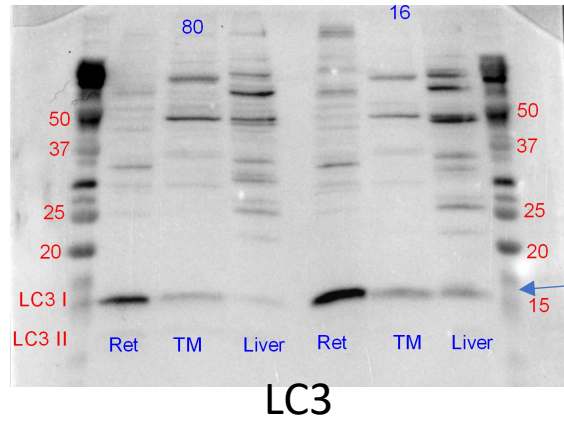
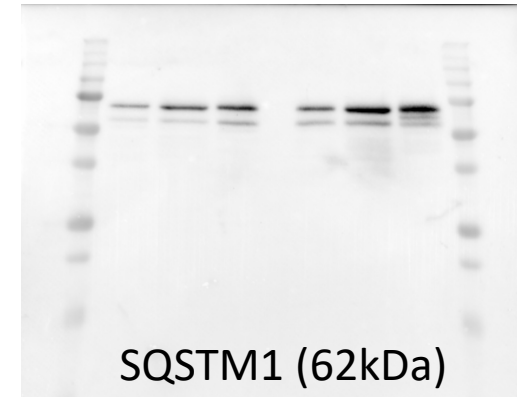
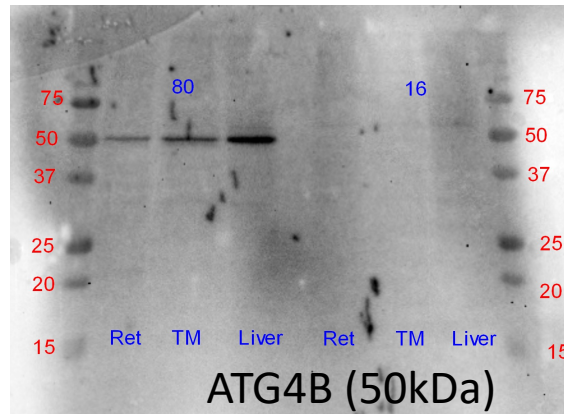
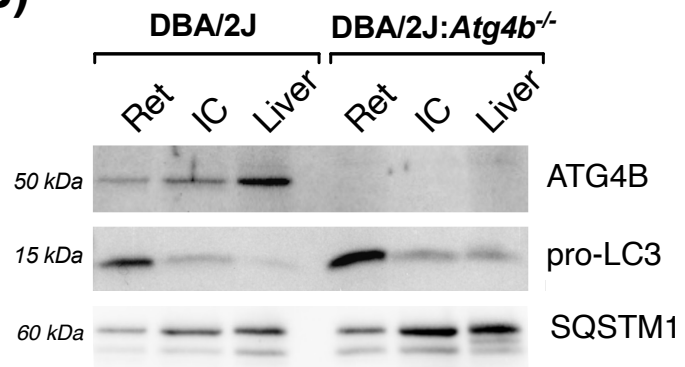


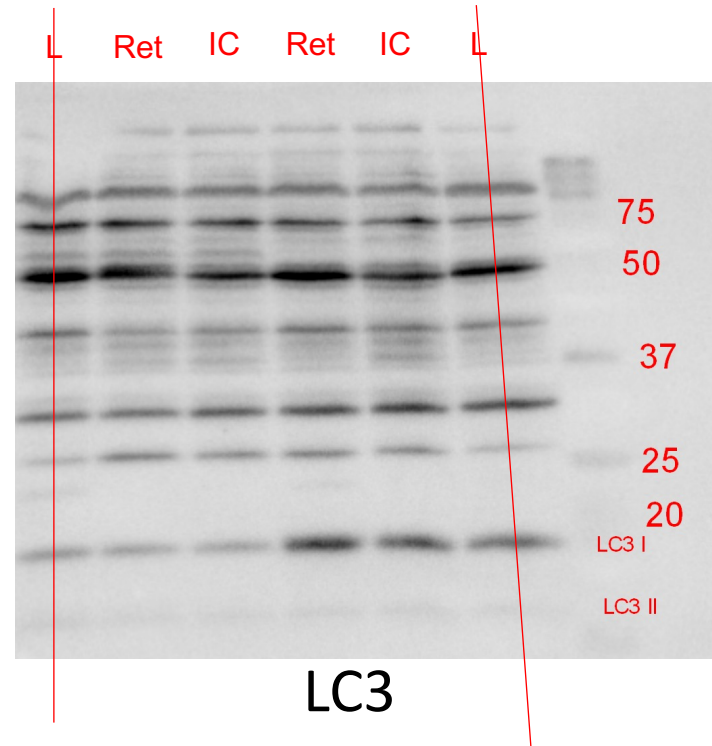
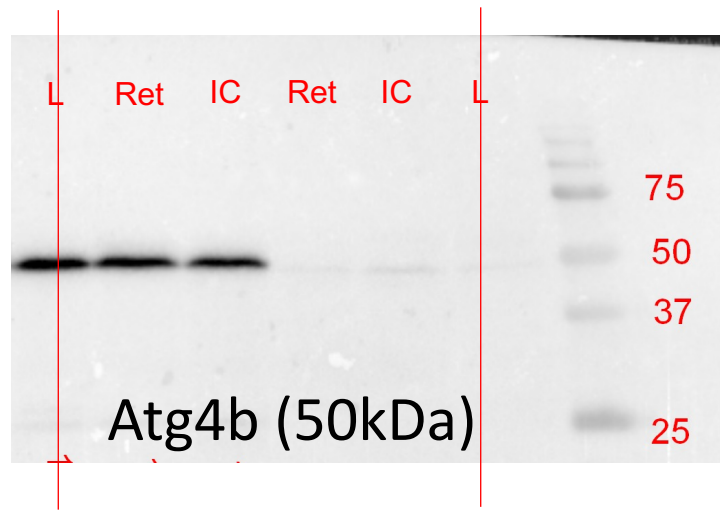
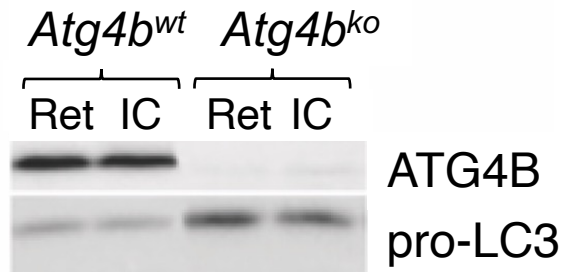
# Supplemental Figure 1

(B)



LC3  
(pro-LC3 and LC3-I run around 15-20kDa)

## Supplemental Figure 2



*non specific bands from Atg4a antibodies- not included in the manuscript*

**LC3**  
*(pro-LC3 and LC3-I run around 15-20kDa)*

# Supplemental Figure 3

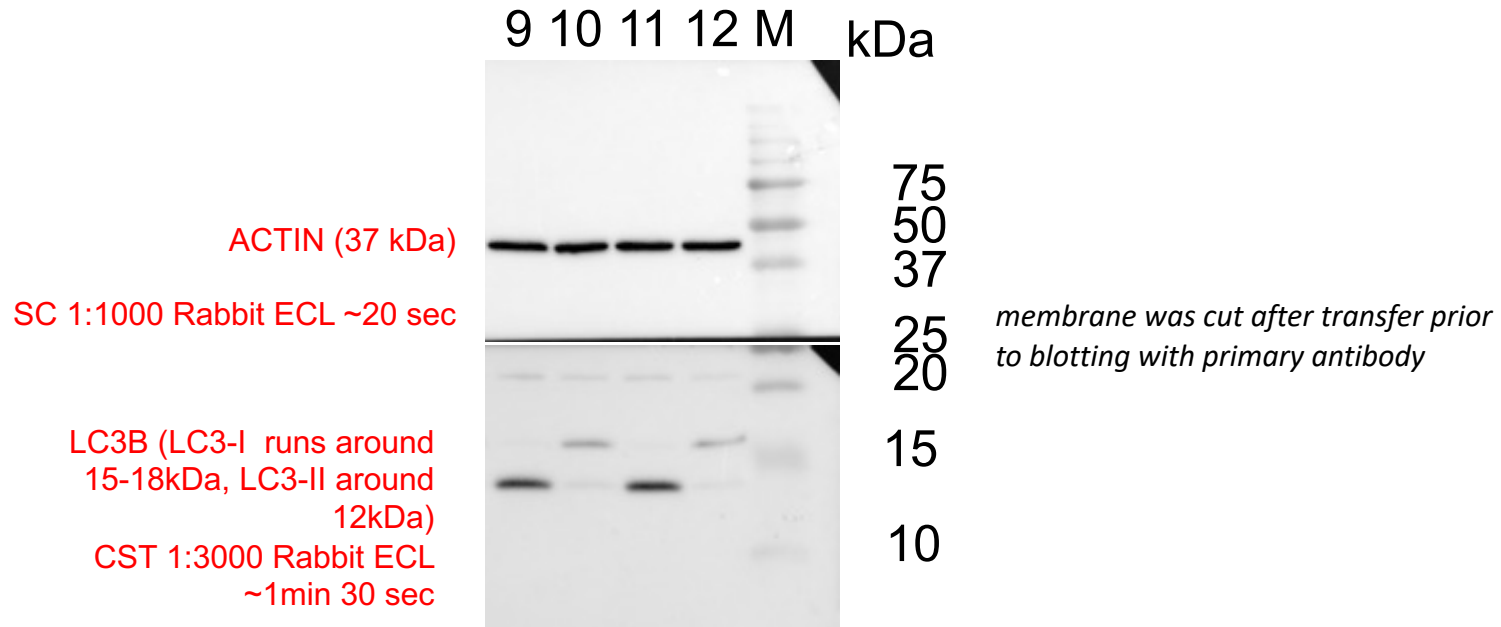
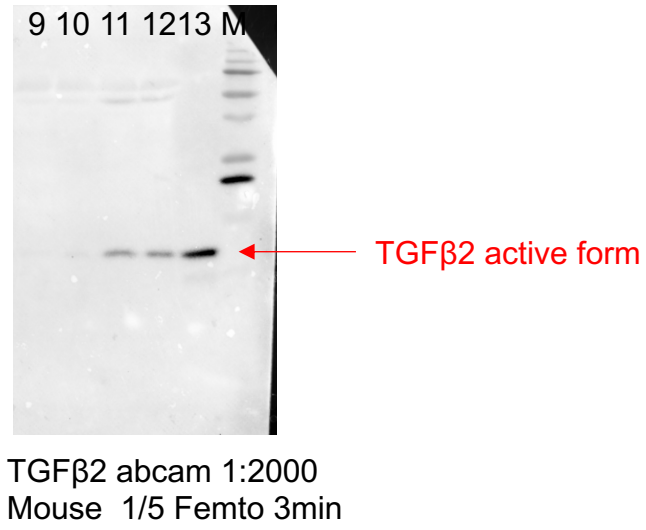
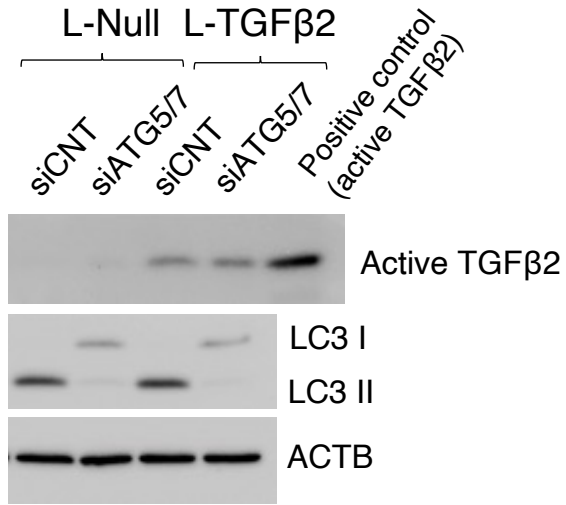
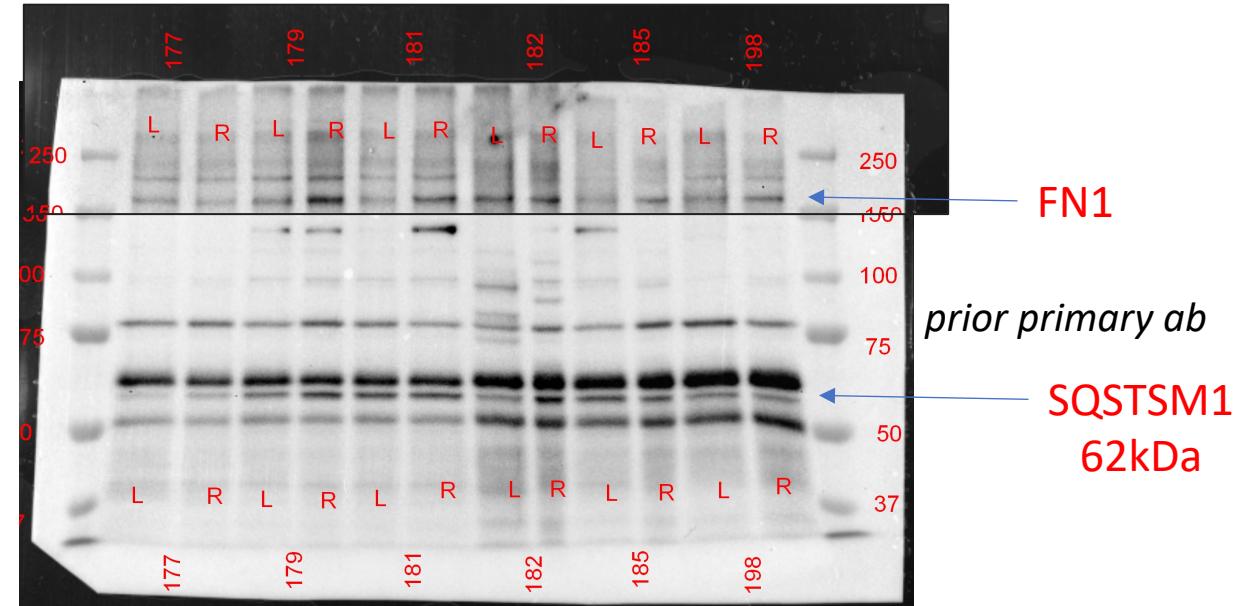
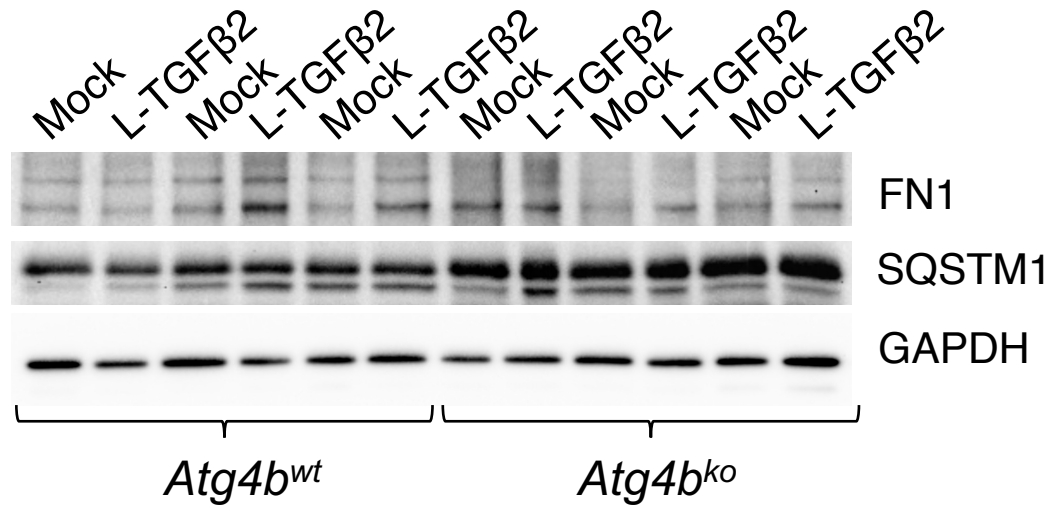
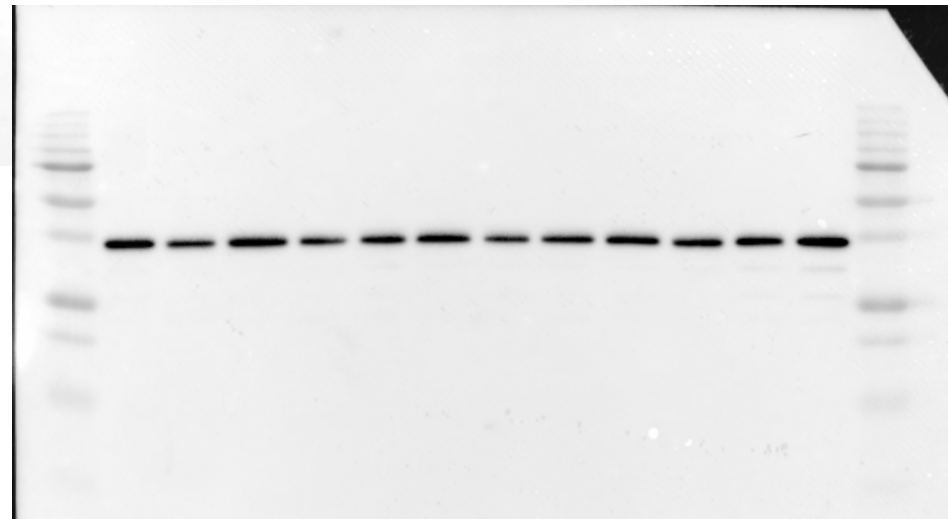
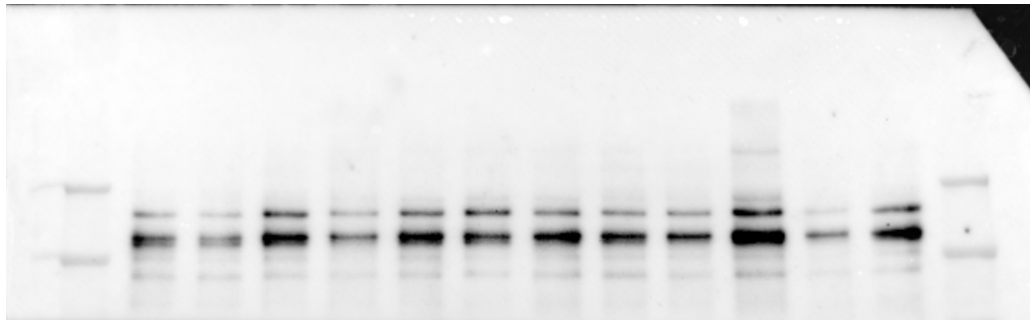


Figure 6



membrane was cut after transfer prior to blotting with primary antibody



GAPDH  
36kDa

Figure 6

