

## *Supplementary Material*

### **Different responses of the rhizosphere microbiomes to *Verticillium dahliae* infection in two cotton cultivars**

**First Author\*:** Zhanjiang Tie<sup>1</sup>, Peng Wang<sup>2</sup>, **Co-Author:** XueKun Zhang<sup>1\*</sup>, Hui Xi<sup>1\*</sup>

**\* Correspondence:**

Xuekun Zhang

Zhangxk2459@163.com

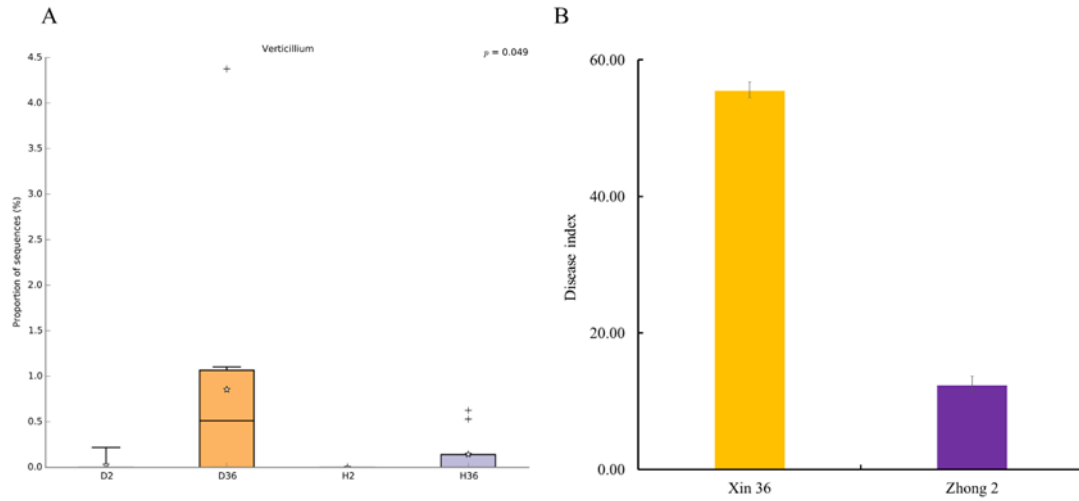
Hui Xi

xihui101101@126.comSupplementary Data

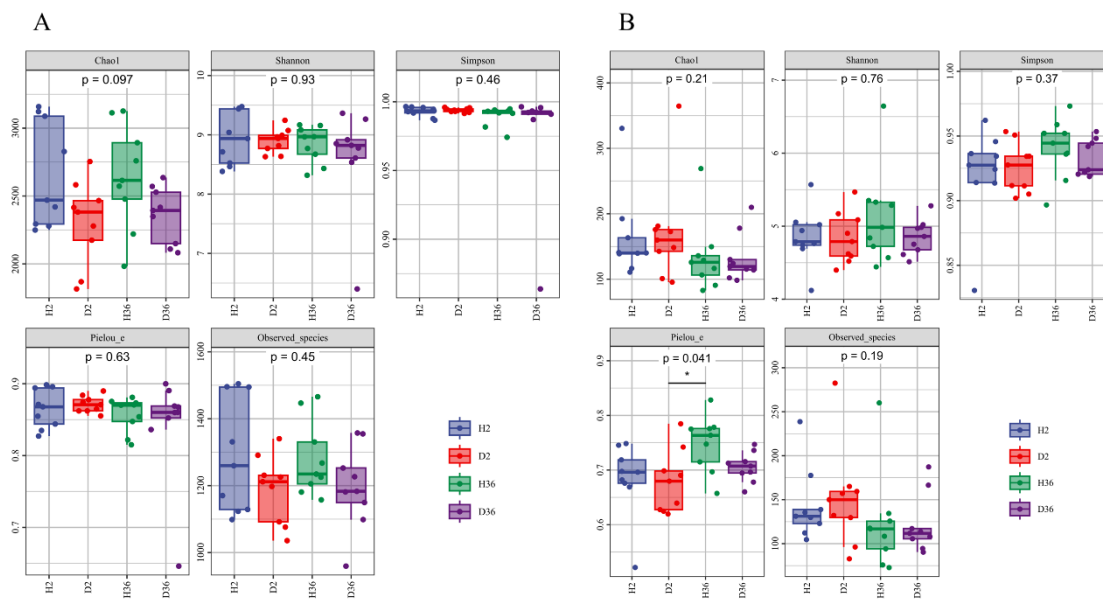
#### **Supplementary Figures**



**Supplementary Figure 1.** Symptoms of Zhong 2 and Xin 36 plants infected by *V. dahliae* in the nursery of cotton Verticillium wilt identification.



**Supplementary Figure 2.** Different responses of two cotton varieties to *V. dahliae* infection. A. The relative abundance of *Verticillium* in healthy and diseased rhizospheres of two cultivars. B. Investigation results of two cultivars in the nursery of cotton Verticillium wilt identification.



**Supplementary Figure 3.** Alpha diversity of healthy and diseased rhizosphere microbiome in two cotton cultivars.