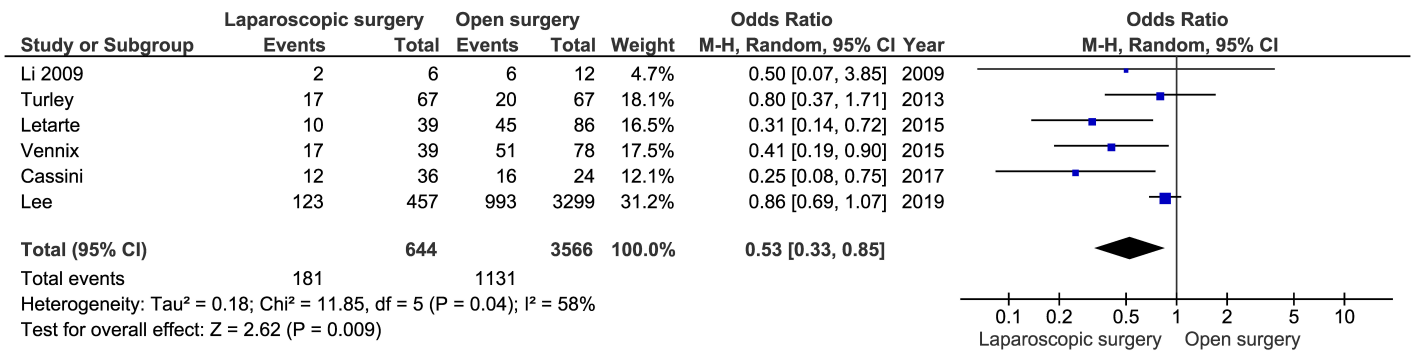


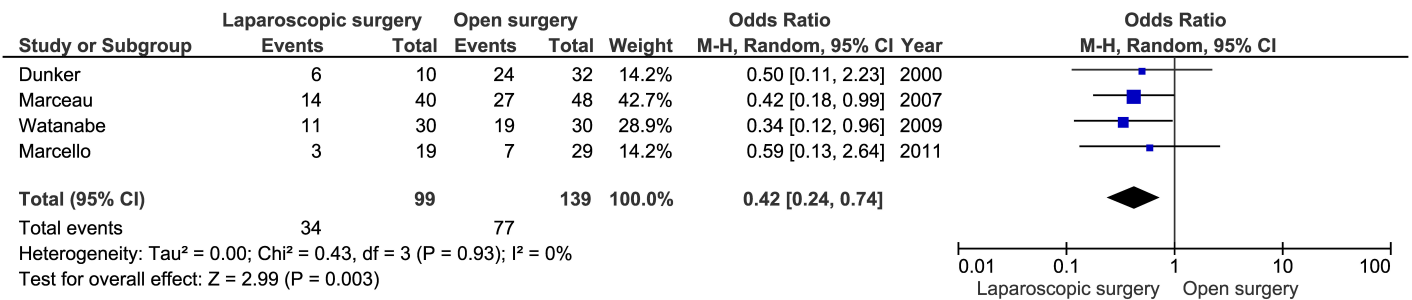
Supplementary figure 1 A-C: Forest plots for overall morbidity after emergency colorectal surgery, laparoscopic vs. open approach for complicated diverticulitis, IBD and colorectal cancer.

Forest plot 1A: overall morbidity complicated diverticulitis.



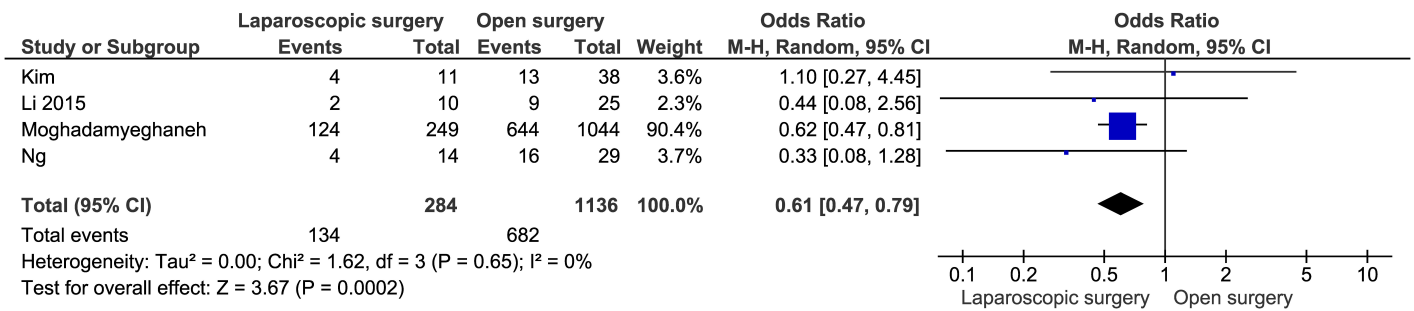
Suppl. Fig. 1A) Overall morbidity after laparoscopic vs open emergency surgery for complicated diverticulitis.

Forest plot 1B: overall morbidity IBD.



Suppl. Fig. 1B) Overall morbidity after laparoscopic vs open emergency surgery for Inflammatory bowel disease.

Forest plot 1C: overall morbidity colorectal cancer.



Suppl. Fig. 1C) Overall morbidity after laparoscopic vs open emergency surgery for colorectal cancer.