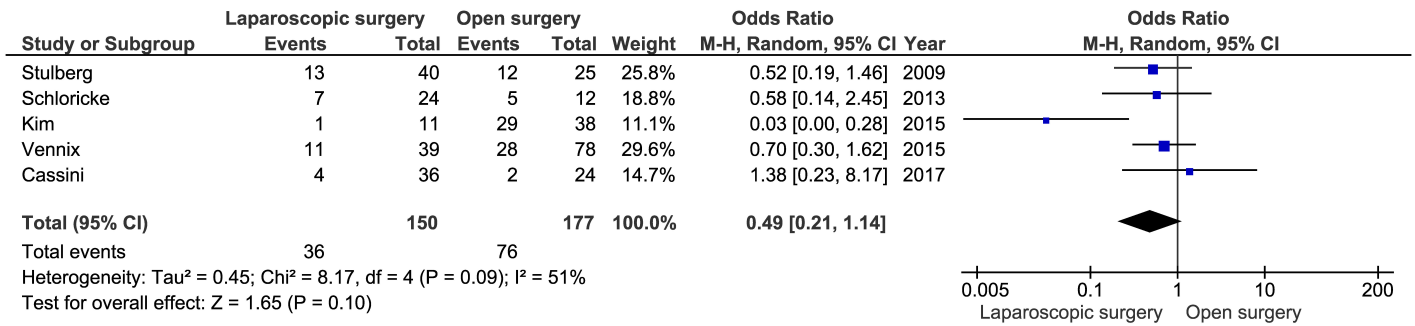


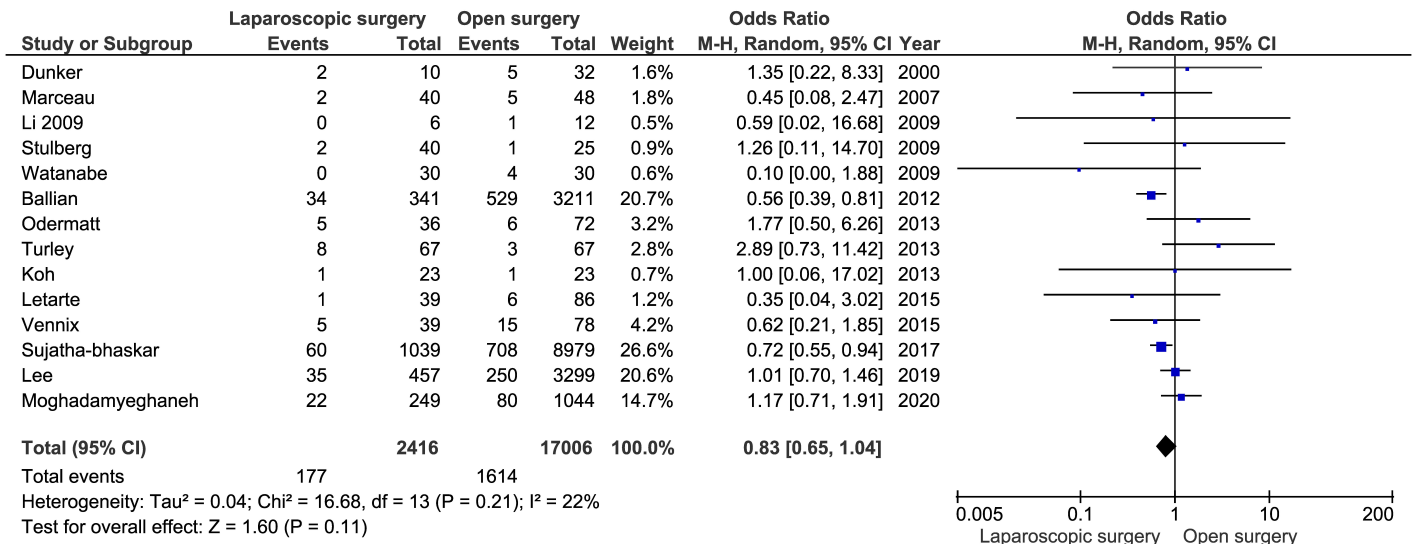
**Supplementary figure 2A-E: Forest plots for the secondary outcomes after emergency colorectal surgery, laparoscopic vs. open approach.**

**Forest plot 2A: ICU admissions.**



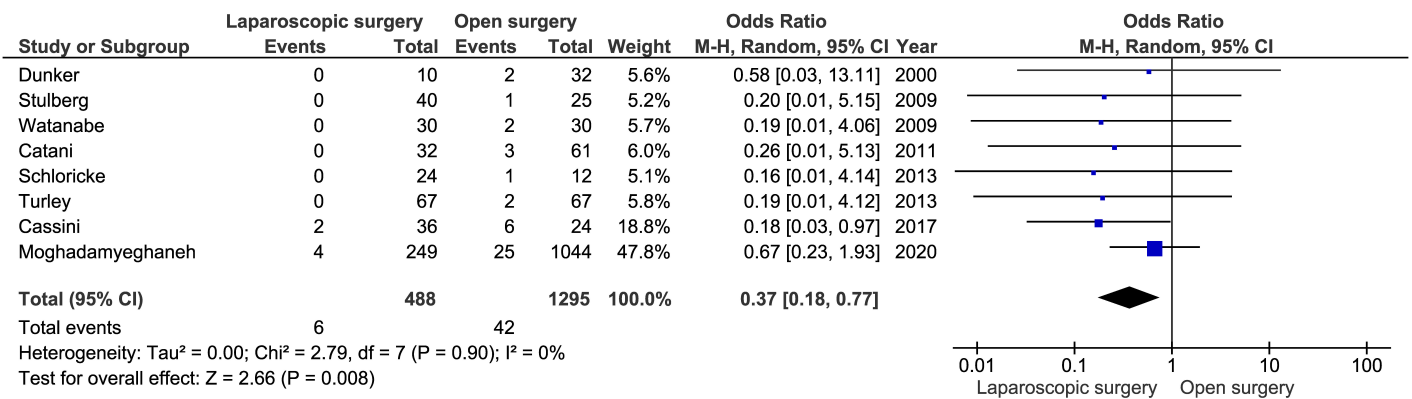
Suppl. Fig. 2A: ICU admission after laparoscopic vs. open emergency colorectal surgery.

**Forest plot 2B: Reinterventions.**



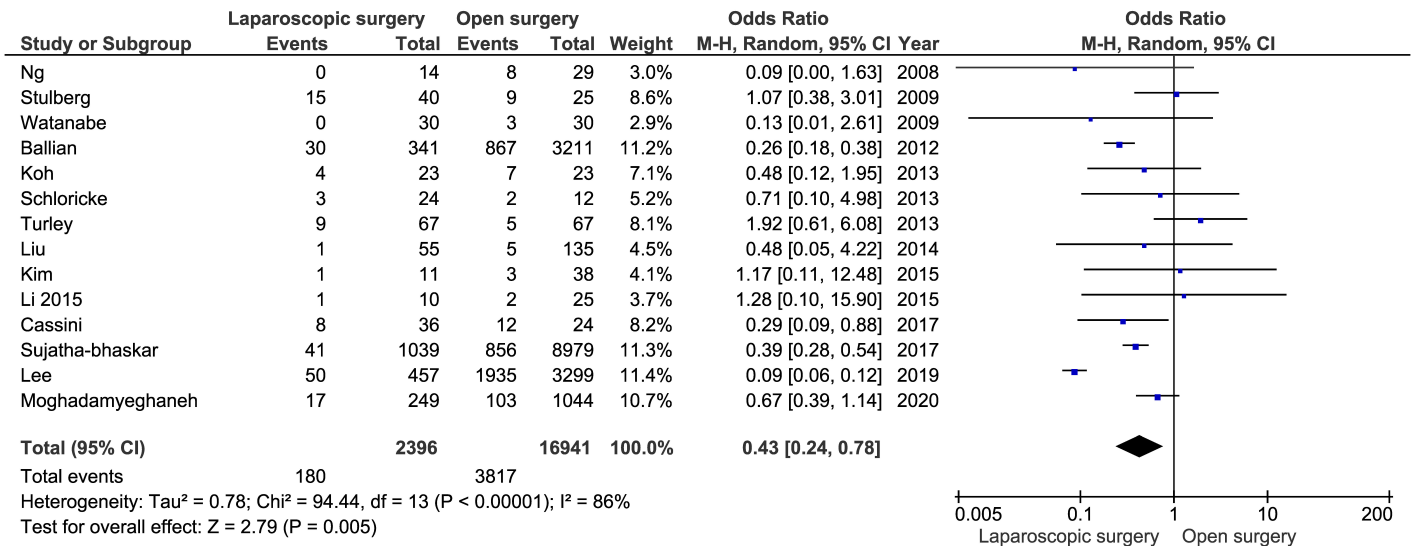
Suppl. Fig. 2B: Reintervention after laparoscopic vs. open emergency colorectal surgery. Vallance et al. was not included in the meta-analyses, due to discrepancy of numbers in the text and tables for reinterventions.

Forest plot 2C: Wound dehiscence.



Suppl. Fig. 2C: Wound dehiscence after laparoscopic vs. open emergency colorectal surgery.

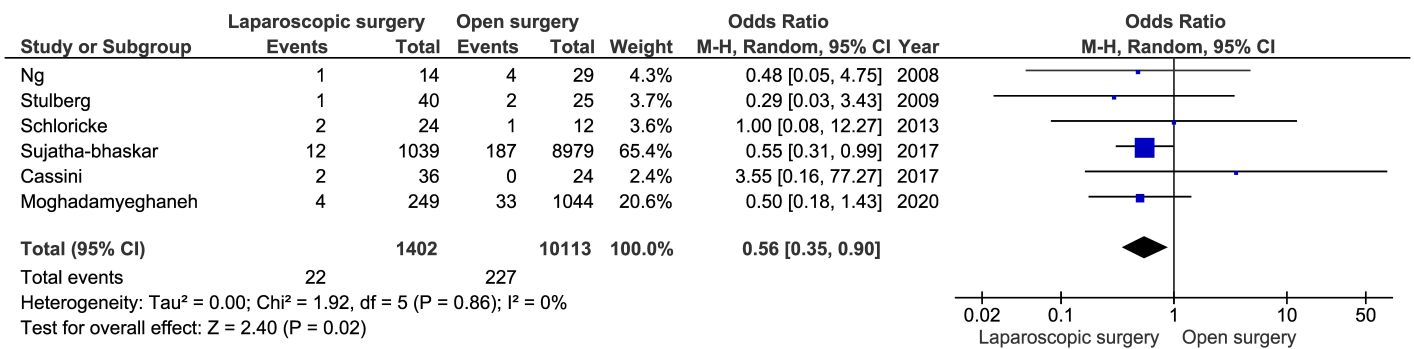
**Forest plot 2D: Pulmonary complications.**



Suppl. Fig. 2D: Pulmonary complications after laparoscopic vs. open emergency colorectal surgery.



**Forest plot 2E: Cardiac complications.**



Suppl. Fig. 2E: Cardiac complications after laparoscopic vs open emergency colorectal surgery.